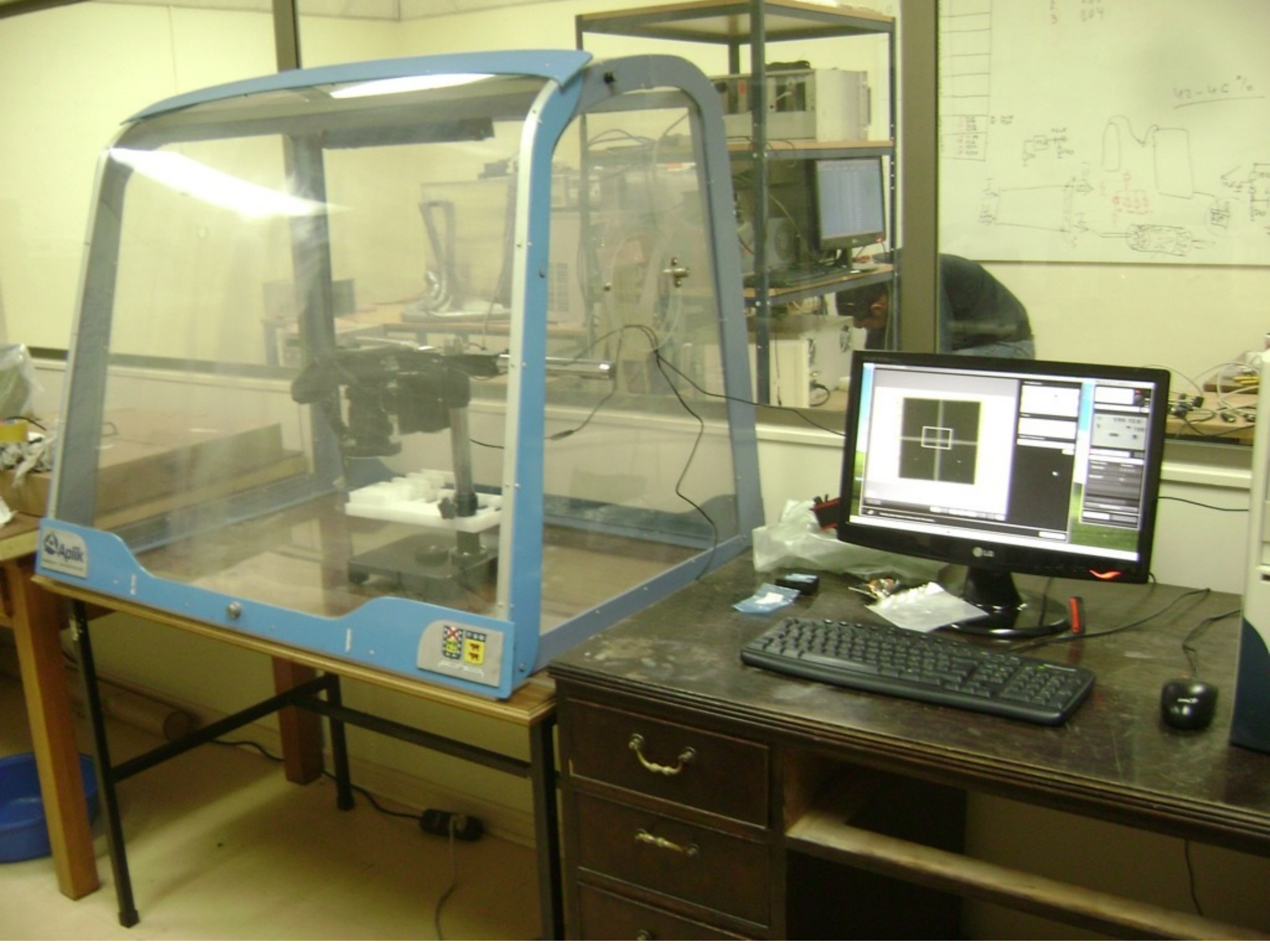
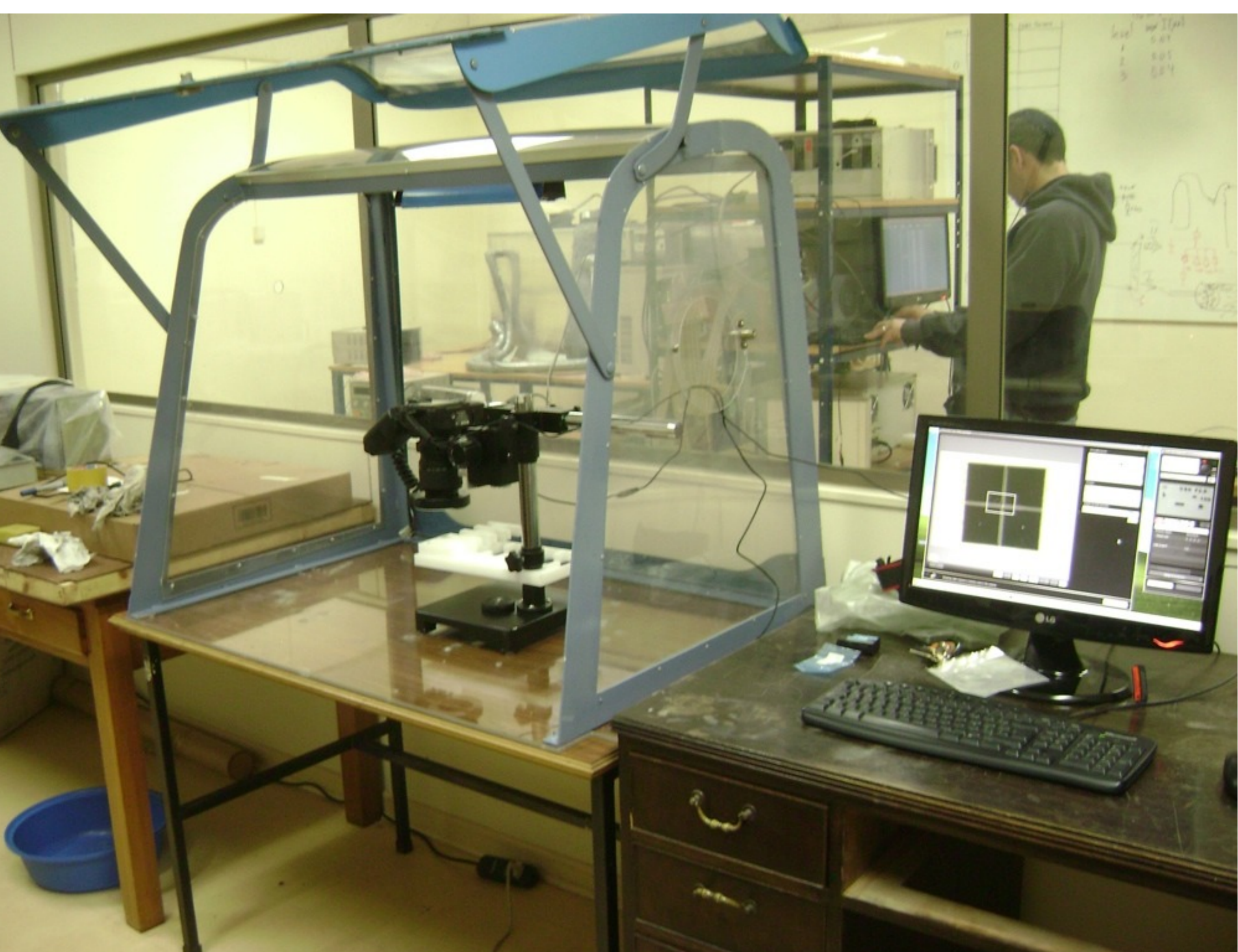


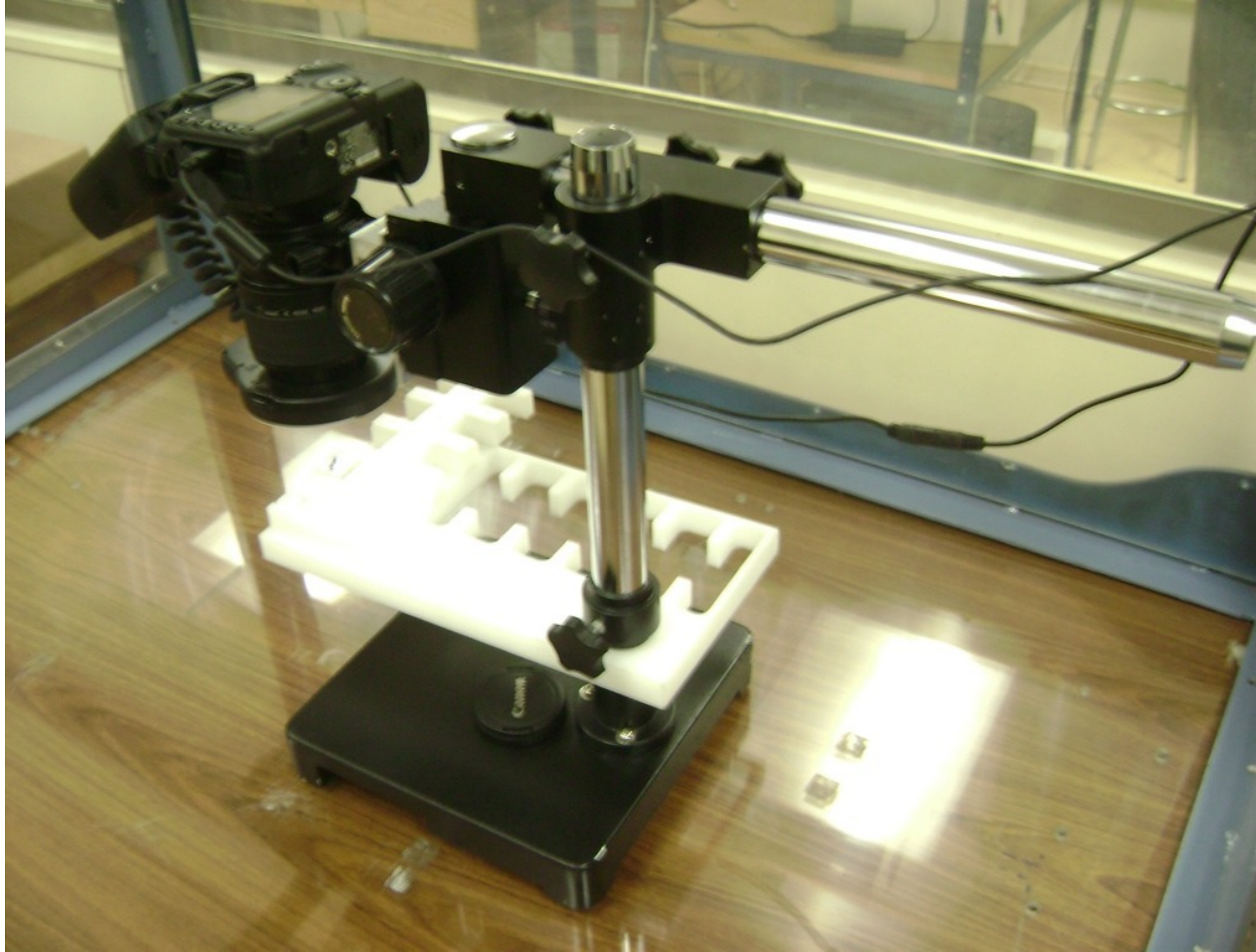
USM Update

W. Brooks

Microscope inspection station - new camera setup









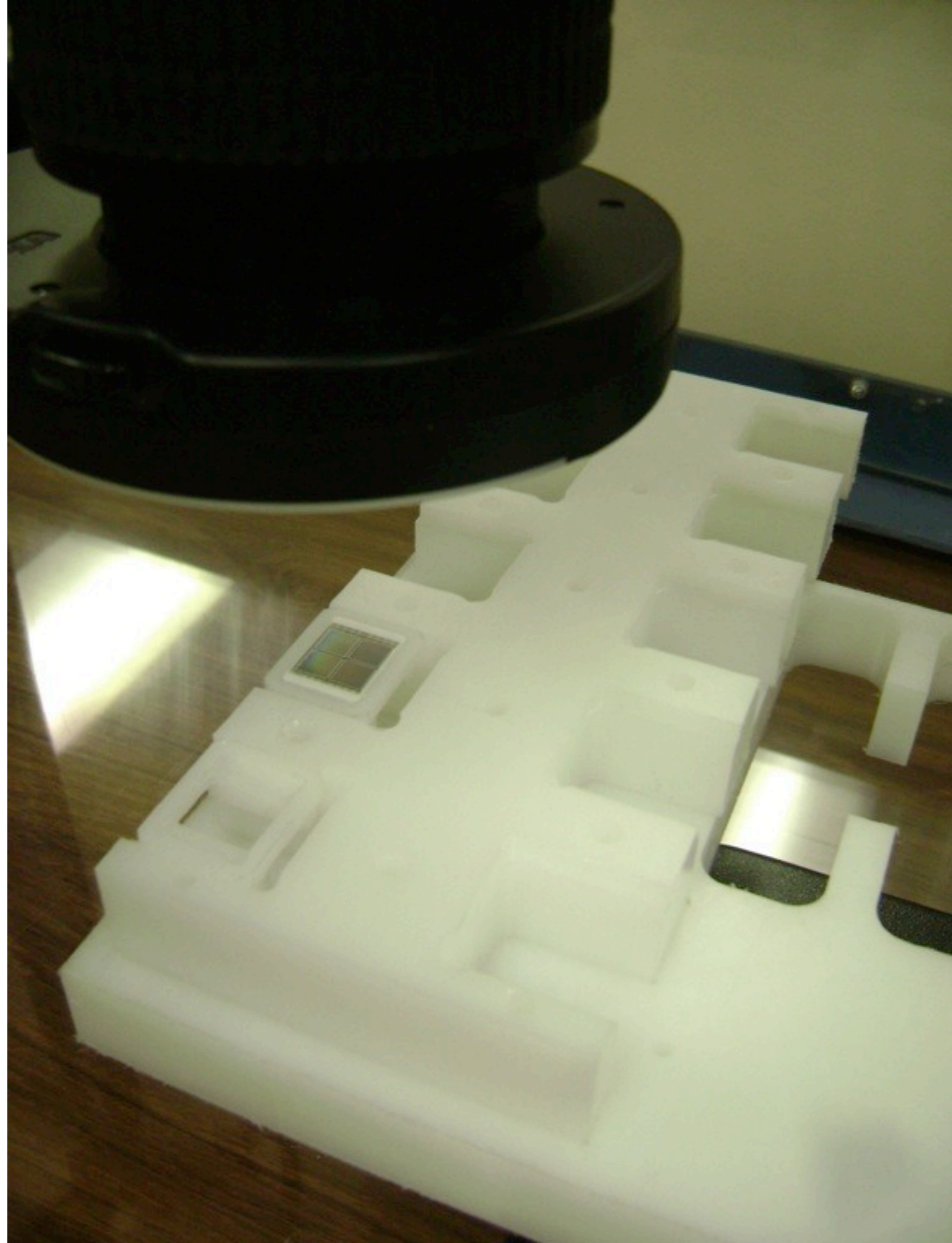
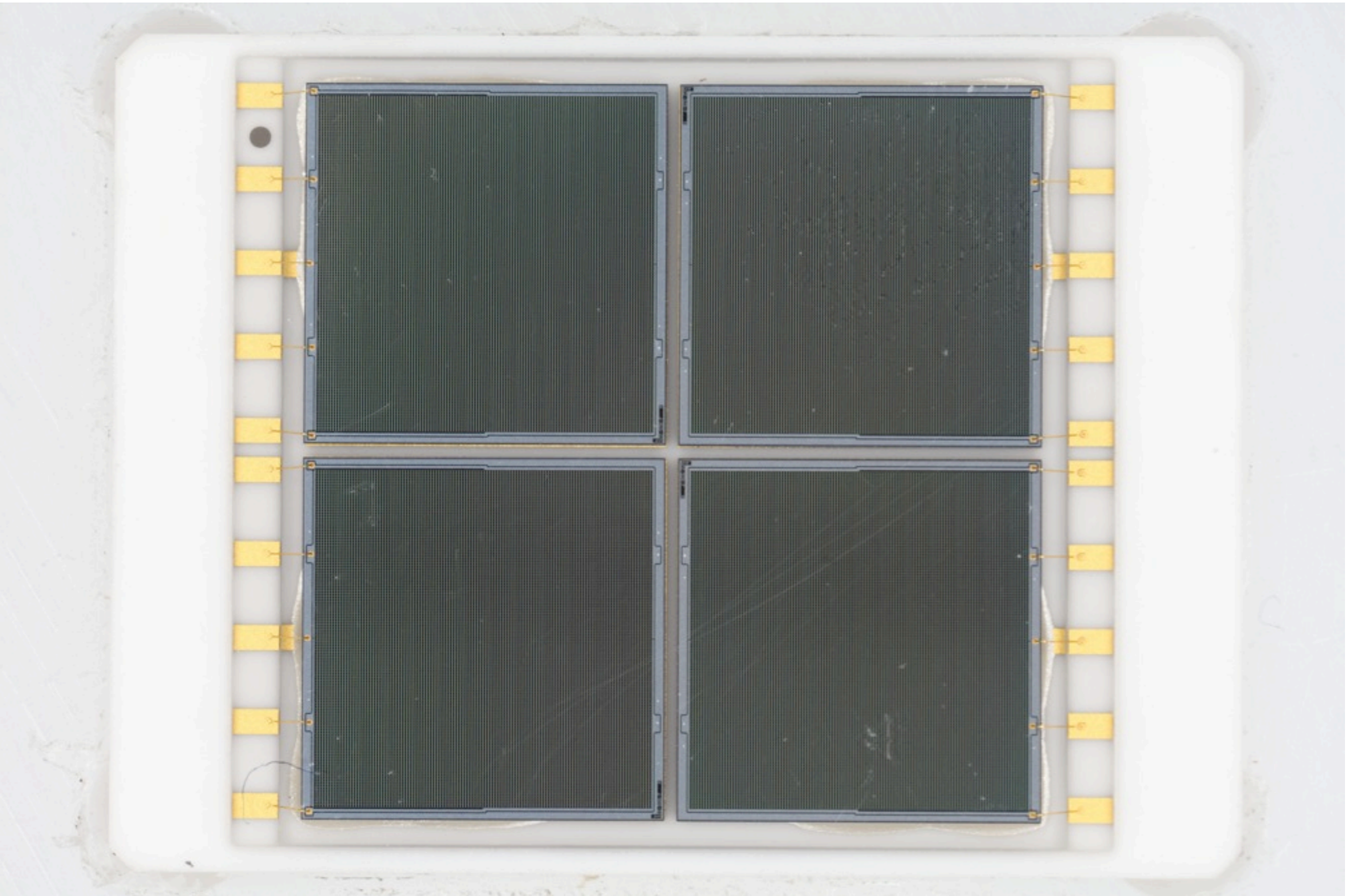
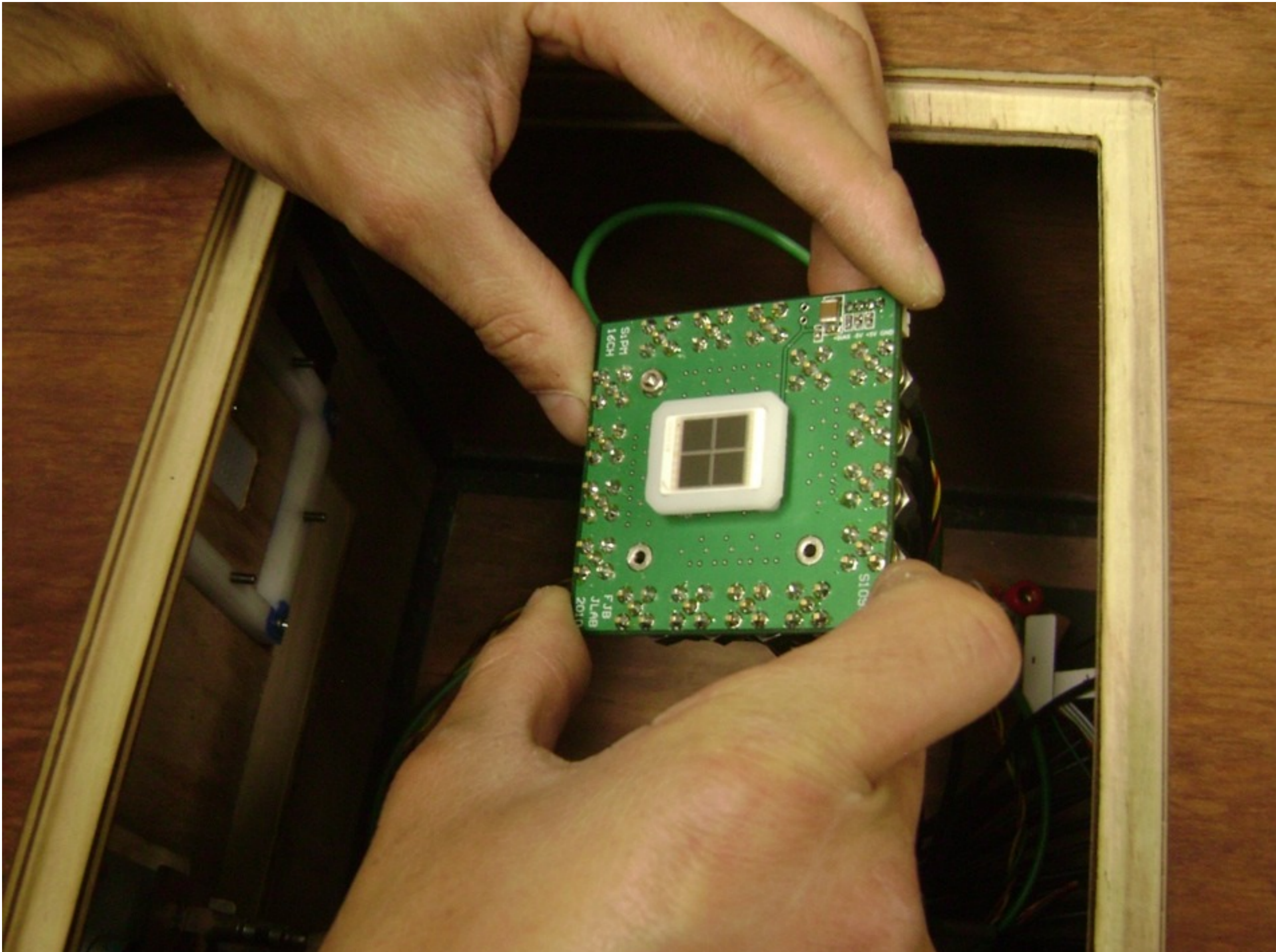
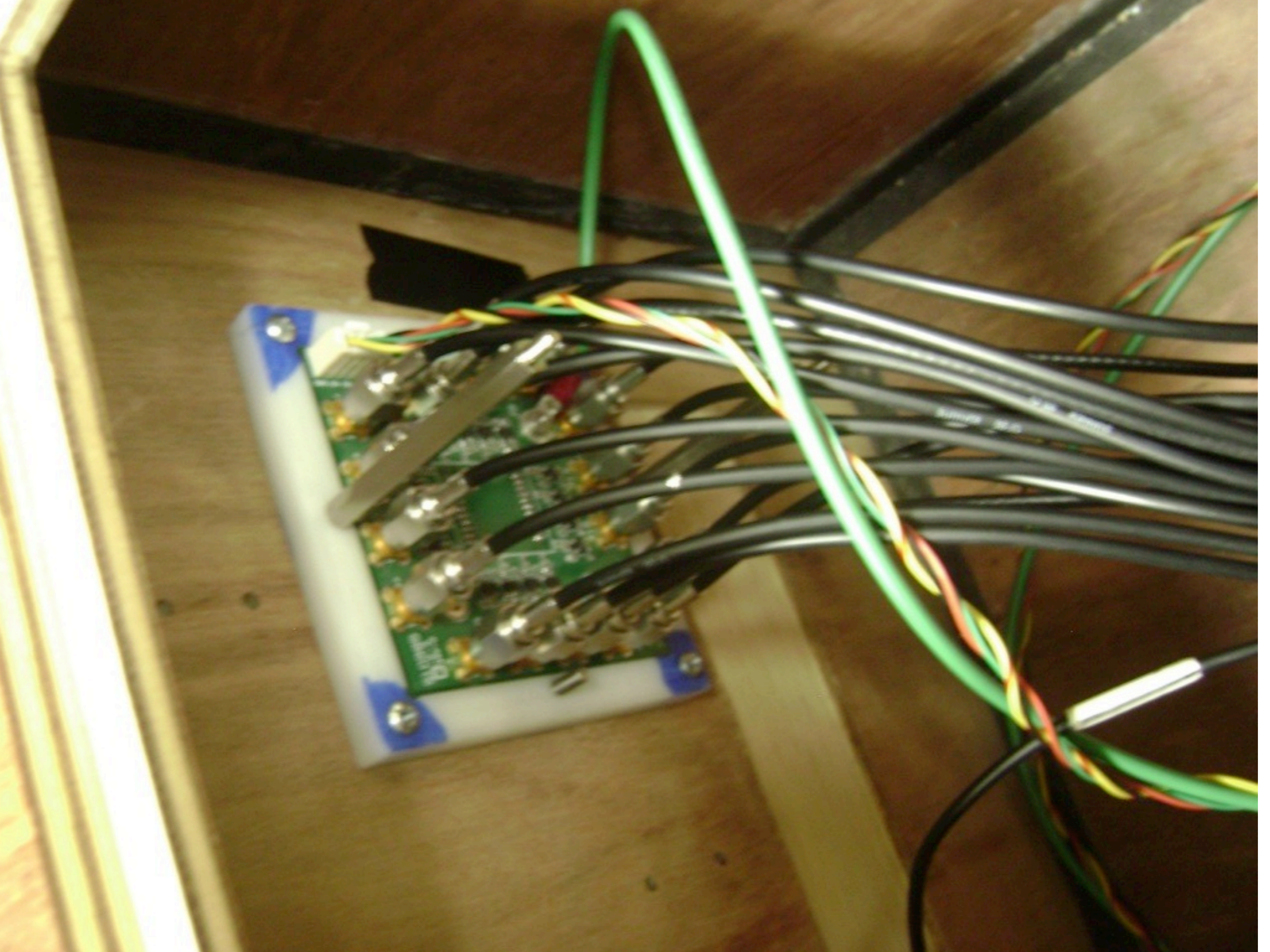


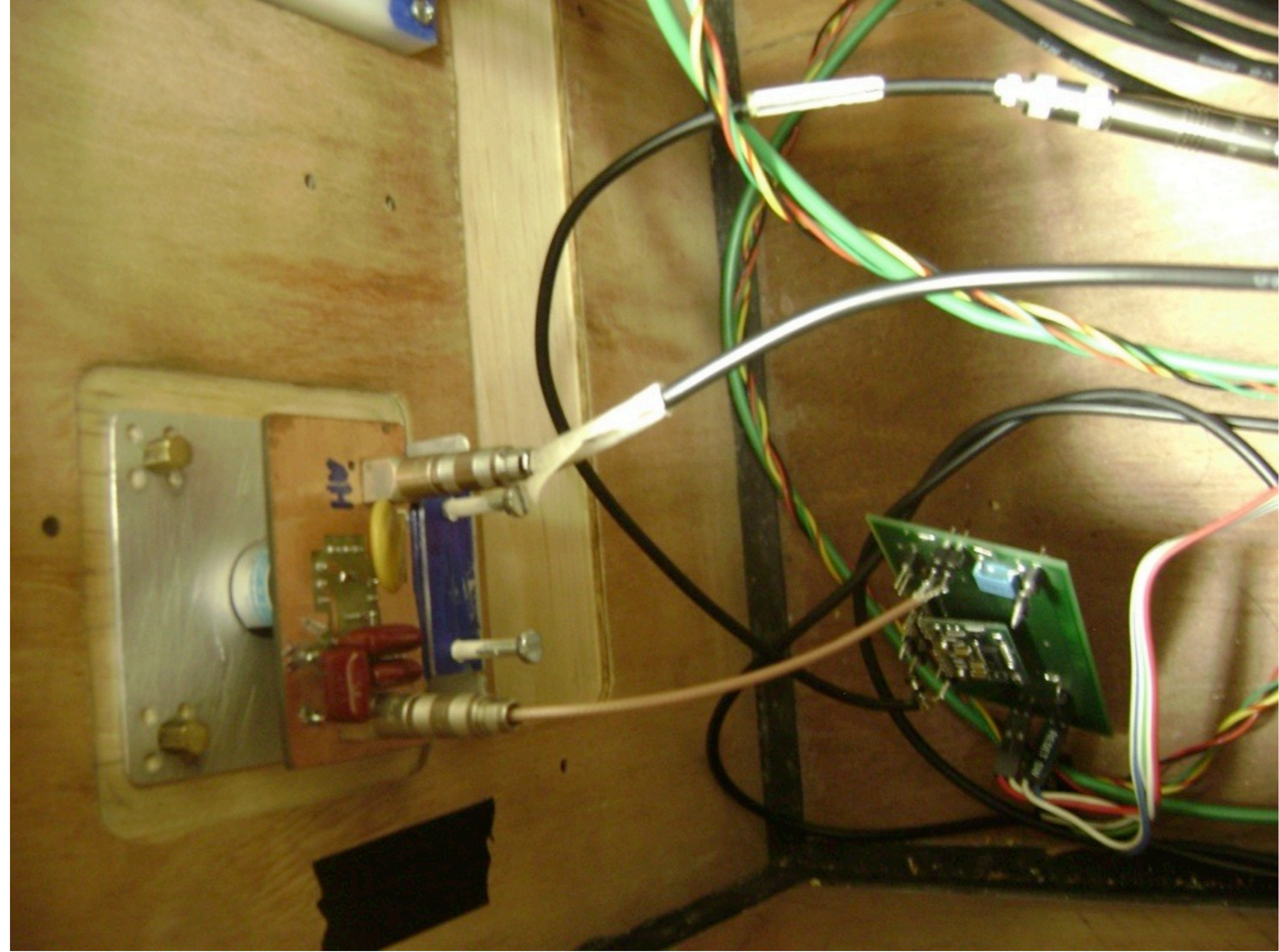
Photo of MPPC using new camera setup

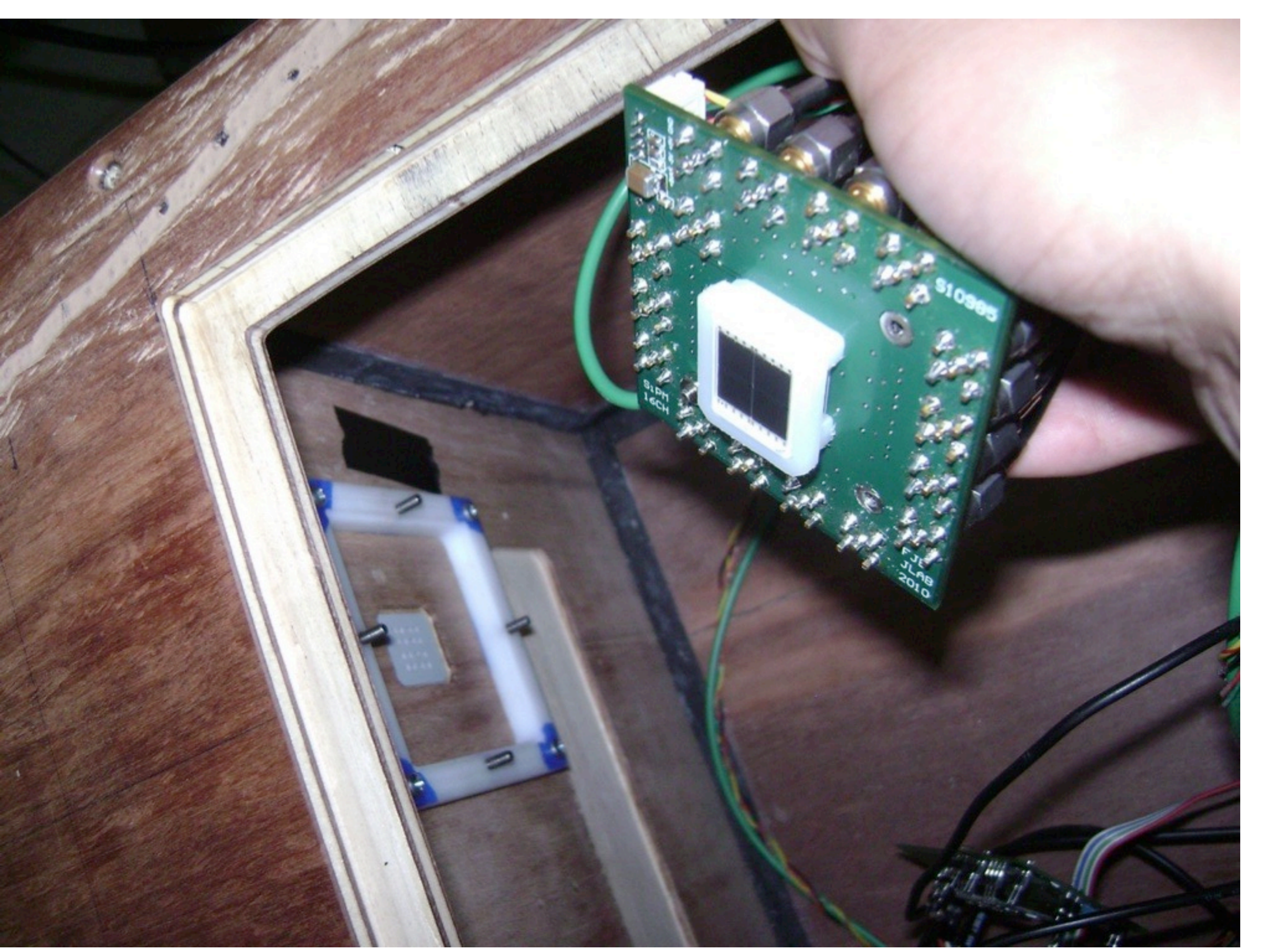


PDE station setup - mechanical









S10985

S1PH
16CH

FJE
JLAB
2010

PDE station setup - light uniformity measurements

Measurements related to PDE station

- Use each cell in MPPC as individual PIN diode
- Illuminate cell with output fiber of USM light mixer
- Interpret cell-to-cell current, normalized to independent PIN diode, as the uniformity of output of USM light mixer

Measurements related to PDE station

ch	I _{pin diode Pedestal} [uA]	I _{MPPC Pedestal} [nA]	I _{pin diode} [uA]	I _{MPPC} [nA]	ratio of MPPC cell current to PIN diode current						
1-1	2	1.09	97.5	76.88	0.78851282						
1-2	2	1.12	97.6	77.01	0.78903689	MPPC matrix					
1-3	2	1.15	97.7	77.15	0.78966223						
1-4	2	1.14	97.55	77.1	0.79036392		2-4	2-1	1-4	1-1	
2-1	2	1.14	97.55	80.28	0.82296258		2-3	2-2	1-3	1-2	
2-2	2	1.12	97.5	80.25	0.82307692		4-4	4-1	3-4	3-1	
2-3	2	1.1	97.49	80.22	0.82285363		4-3	4-2	3-3	3-2	
2-4	2	1.1	97.39	80.2	0.82349317						
3-1	2	1.23	97.38	88.1	0.90470322						
3-2	1	1.17	97.4	86.9	0.89219713						
3-3	1	1.13	97.45	86.9	0.89173935						
3-4	1	1.11	97.35	86.8	0.89162815						
4-1	1	0.93	97.74	73.8	0.75506446						
4-2	1	0.92	97.6	73.84	0.75655738						
4-3	1	0.91	97.55	73.82	0.75674013						
4-4	1	0.9	97.5	73.82	0.75712821						
3-2	1	0.97	97.5	87		measure after all of the rest					

