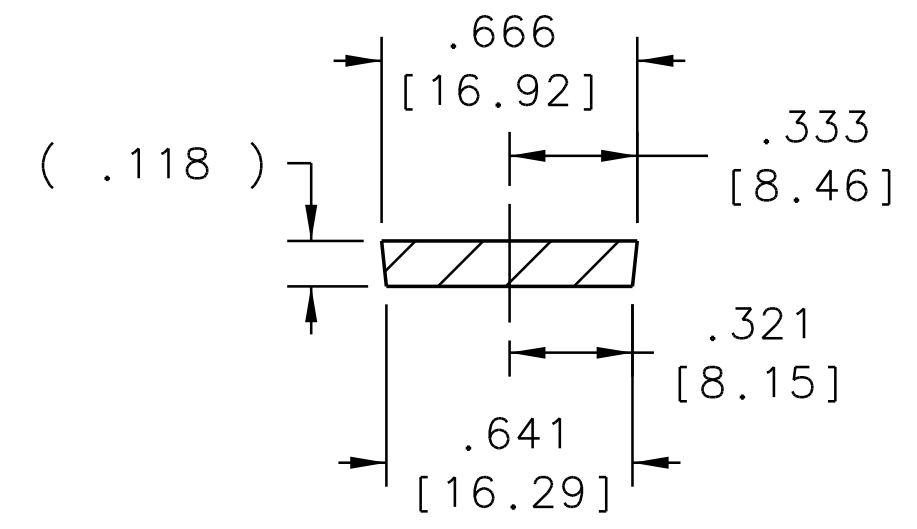
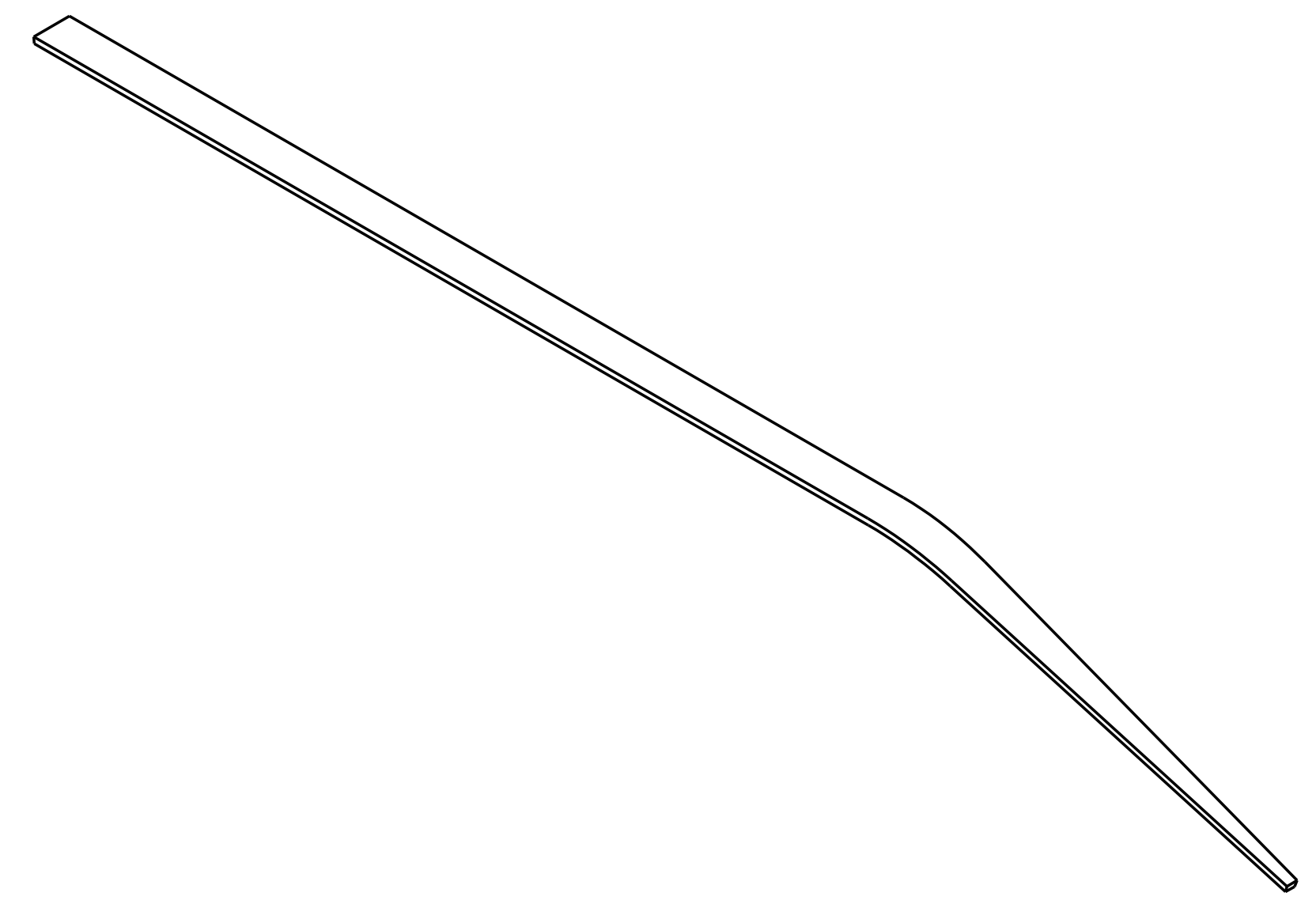
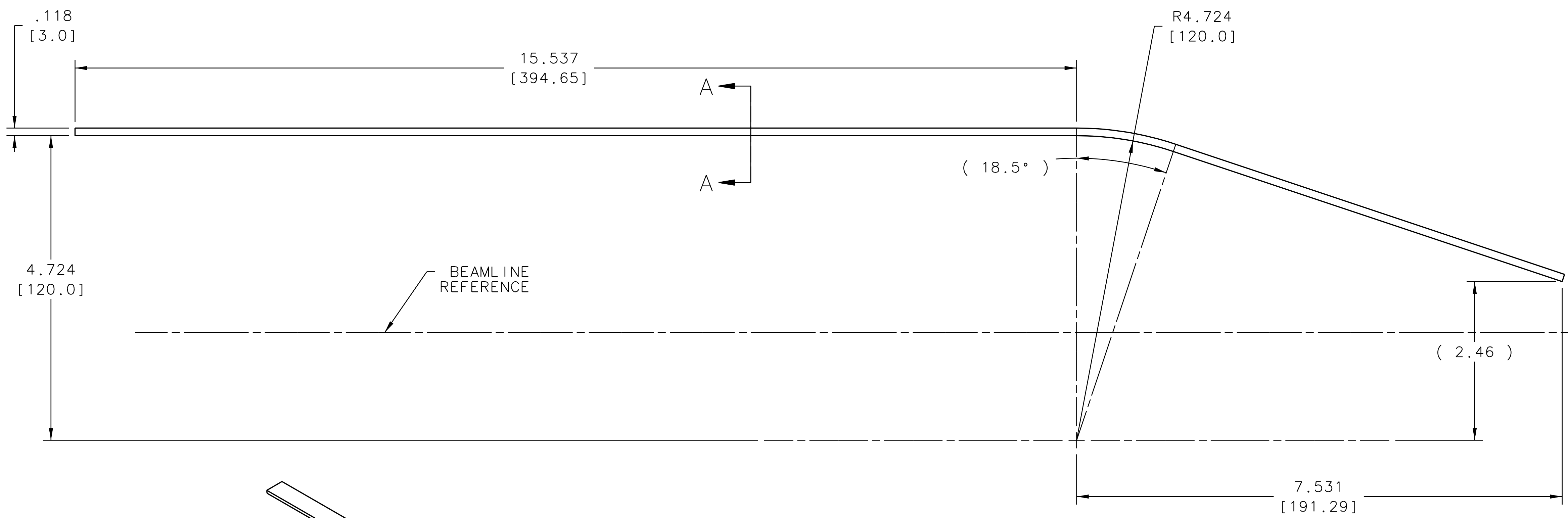
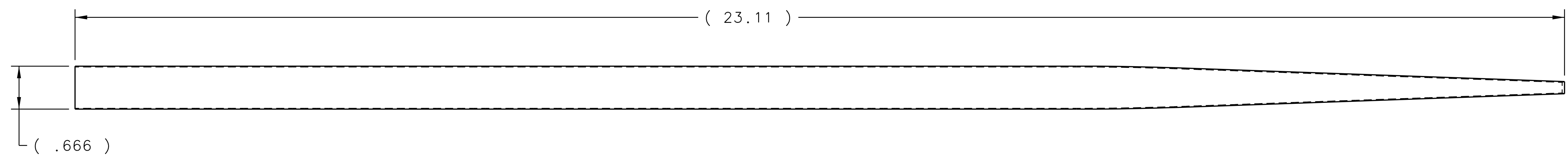


REVISION HISTORY				
ZONE	REV	DESCRIPTION	DATE	APPROVED



SECTION A-A
SCALE: 2/1

NOTES:

- SUGGESTED SOURCE OF JLAB APPROVED ALTERNATE:
ELGEN TECHNOLOGY
(888) 800-8771
www.eljentechnolgy.com

DOCUMENT CONTROL STAMP	DIM & TOL PER ASME Y14.5 UNLESS OTHERWISE SPECIFIED DIMENSIONS ARE IN INCHES TOLERANCES ARE: FRACTIONS DECIMAL ANGLES ± N/A .X ± .1 ± .50° .XX ± .01 .XXX ± .005	TRACKING NO. N/A	United States Department of Energy	Jefferson Lab Thomas Jefferson National Accelerator Facility	Newport News Virginia
MATERIAL ELJEN EJ-212 CAST & HEAT PRESSED	THIRD ANGLE PROJECTION	APPROVALS DRAWN C.L. HUTTON CHECKED D. RATH	DATE 020CT12	HALL D GLUE-X DETECTOR START COUNTER SCINTILLATOR PADDLE	
FINISH MACHINED SURFACES DEBURR & BREAK ALL SHARP EDGES	125 UNLESS OTHERWISE NOTED	APPROVED T. WHITLATCH	APPROVED D. RATH	SIZE DWG. NO. D D00000-01-01-2000	REV. -
DO NOT SCALE DRAWING				SCALE 1:1	USED ON ASSY NO. D00000-01-01-1000 SHEET 1 OF 1