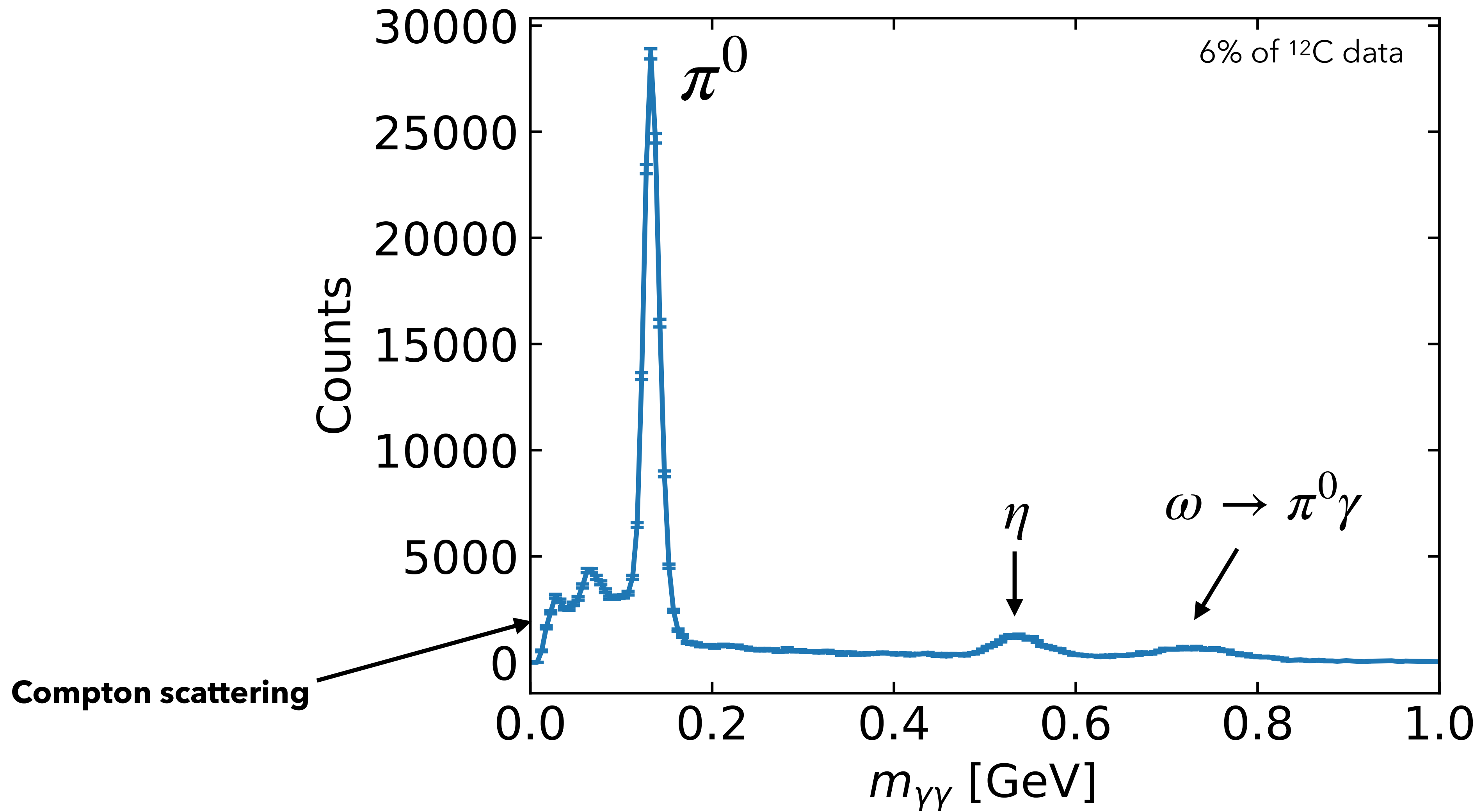
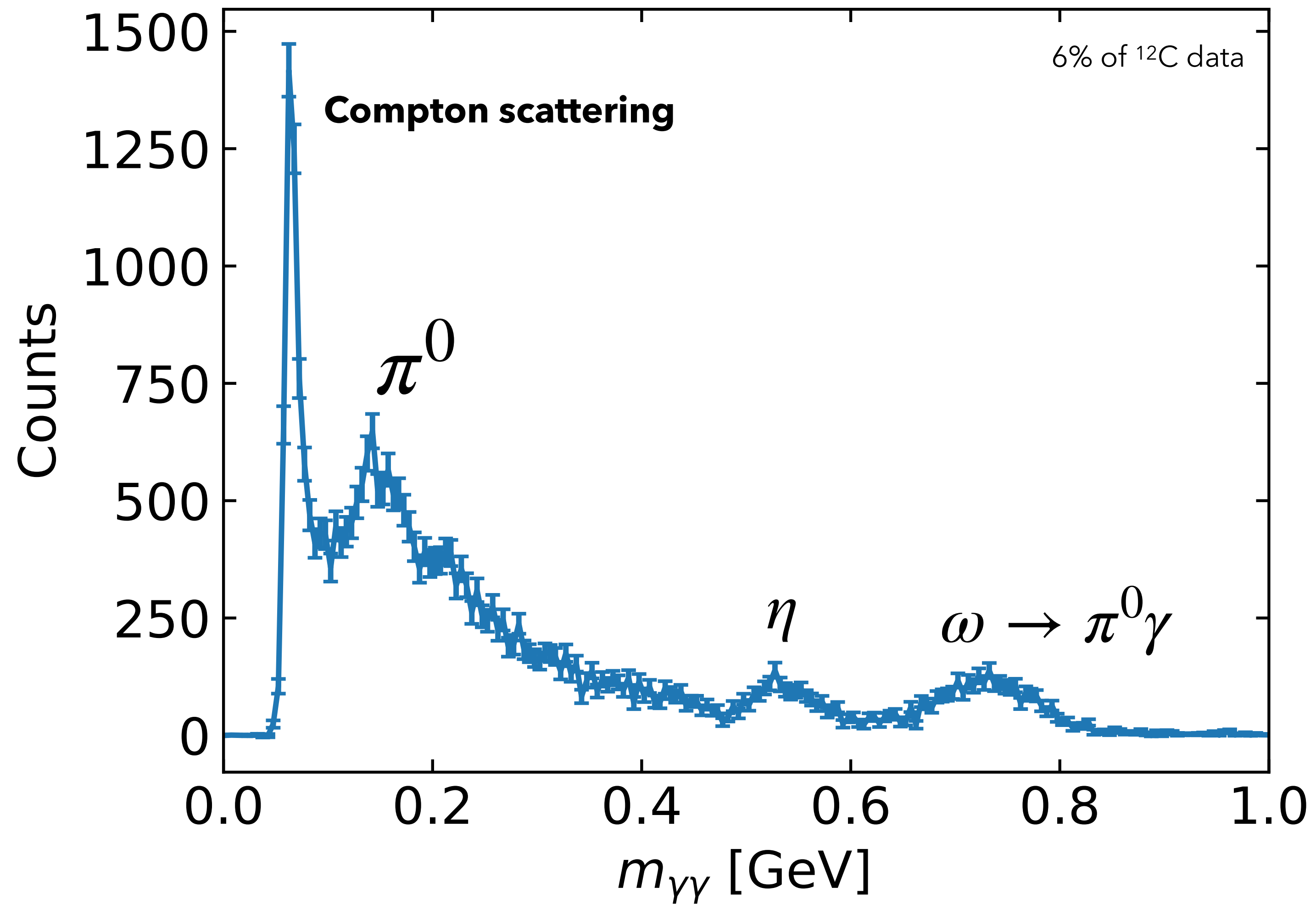


# Full diphoton mass spectrum

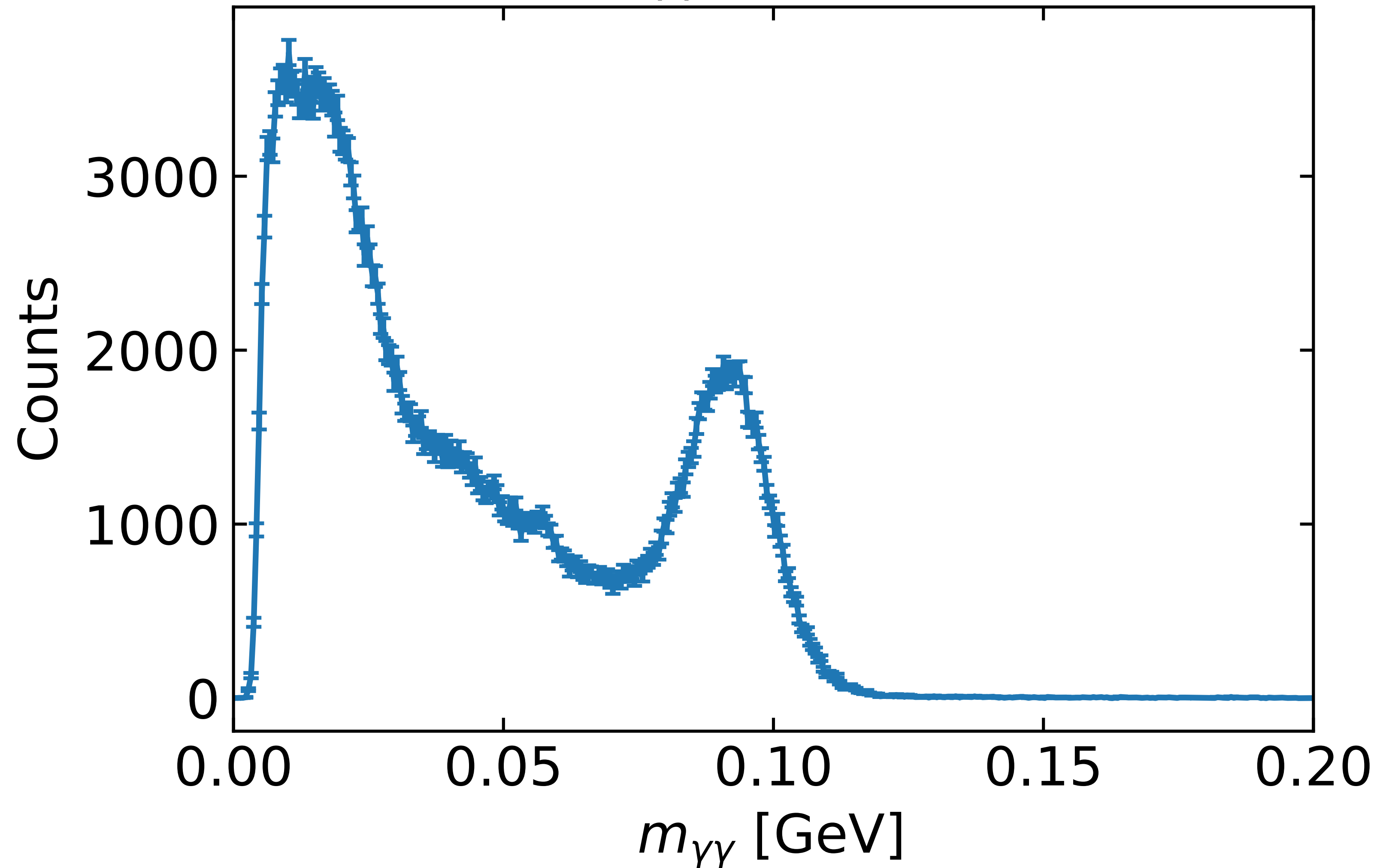


# Mass spectrum with $\theta_{\gamma\gamma} < 0.5^\circ$



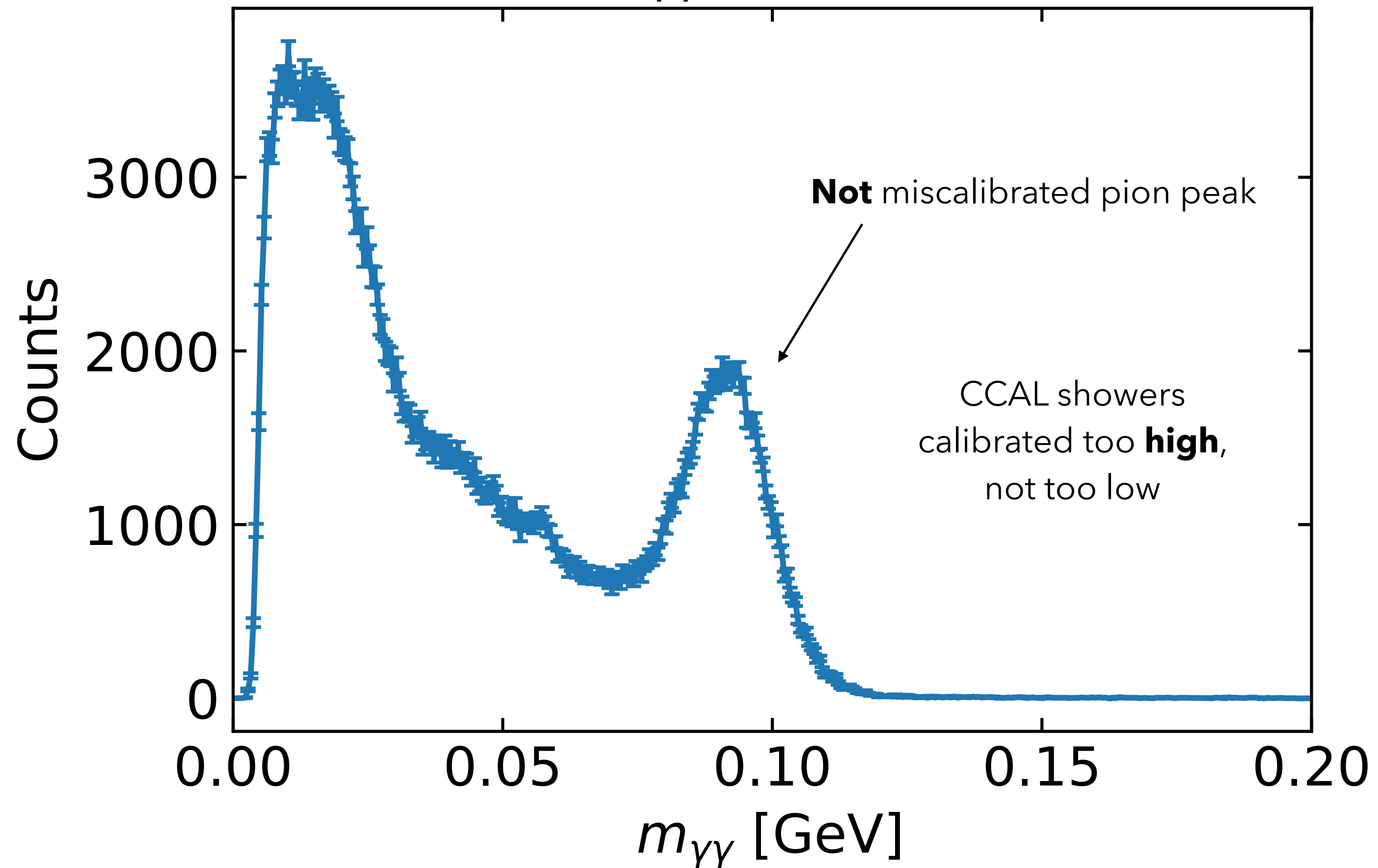
# All Carbon CCAL Data

$$\theta_{\gamma\gamma} < 0.5^\circ$$

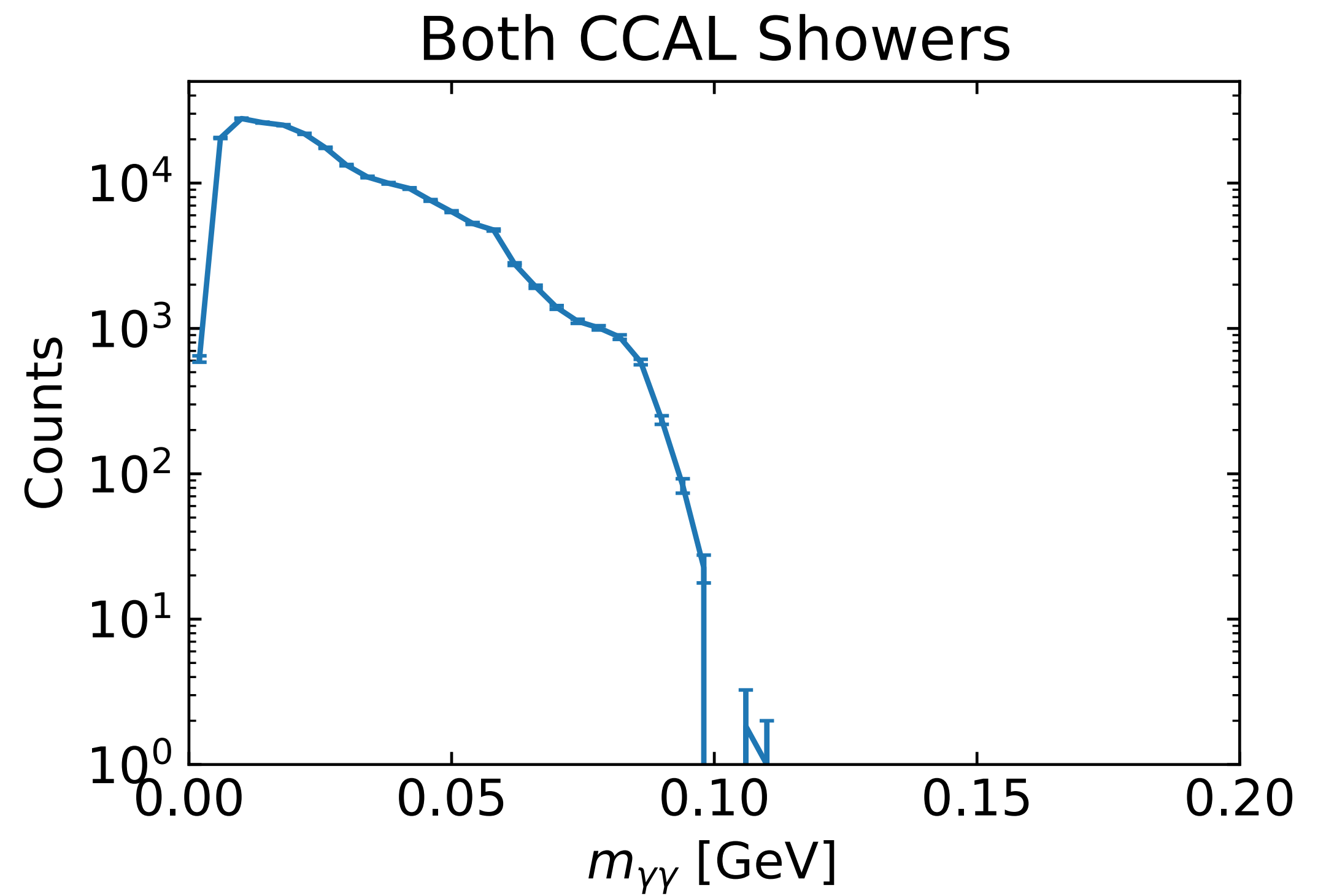
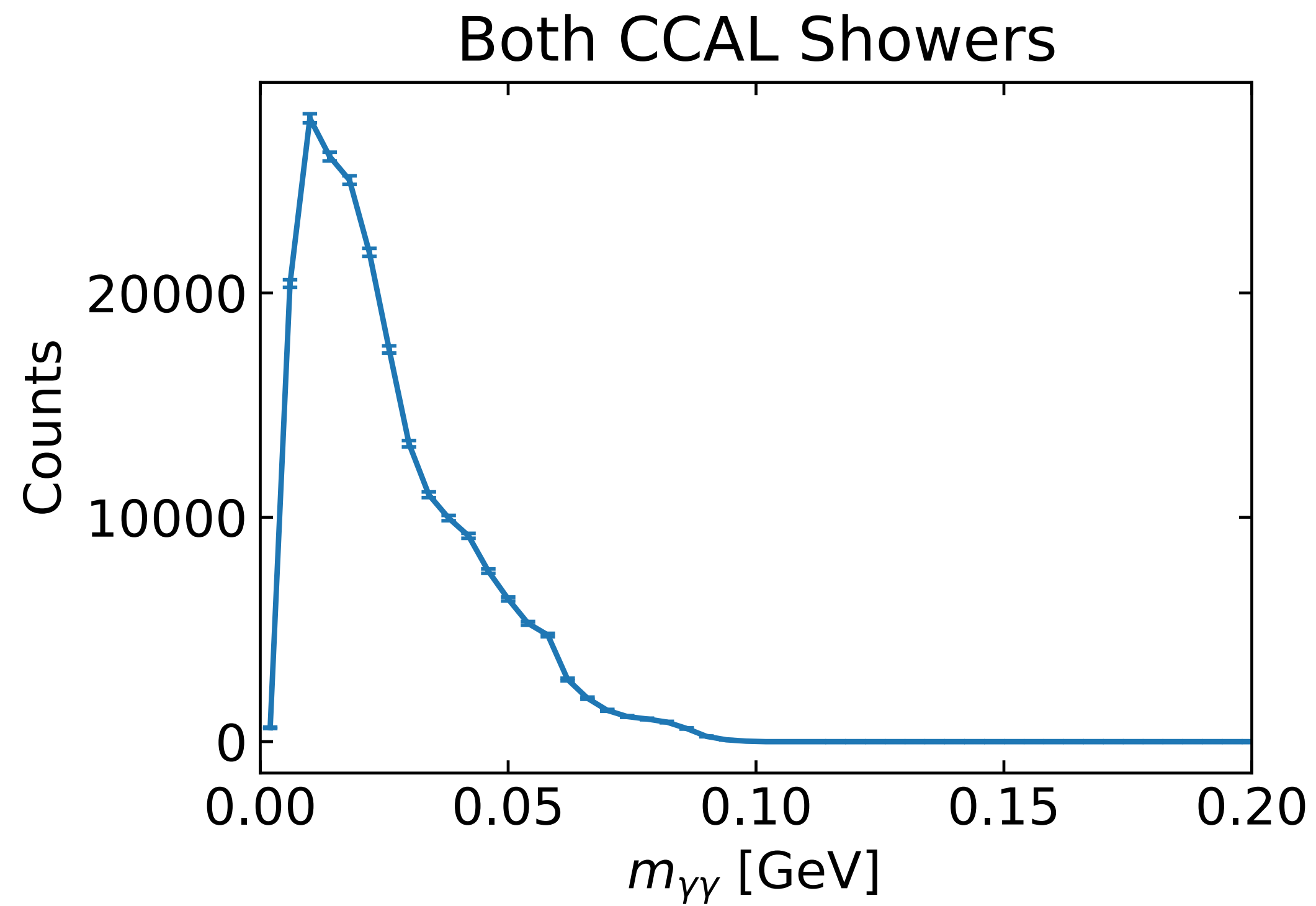


# All Carbon CCAL Data

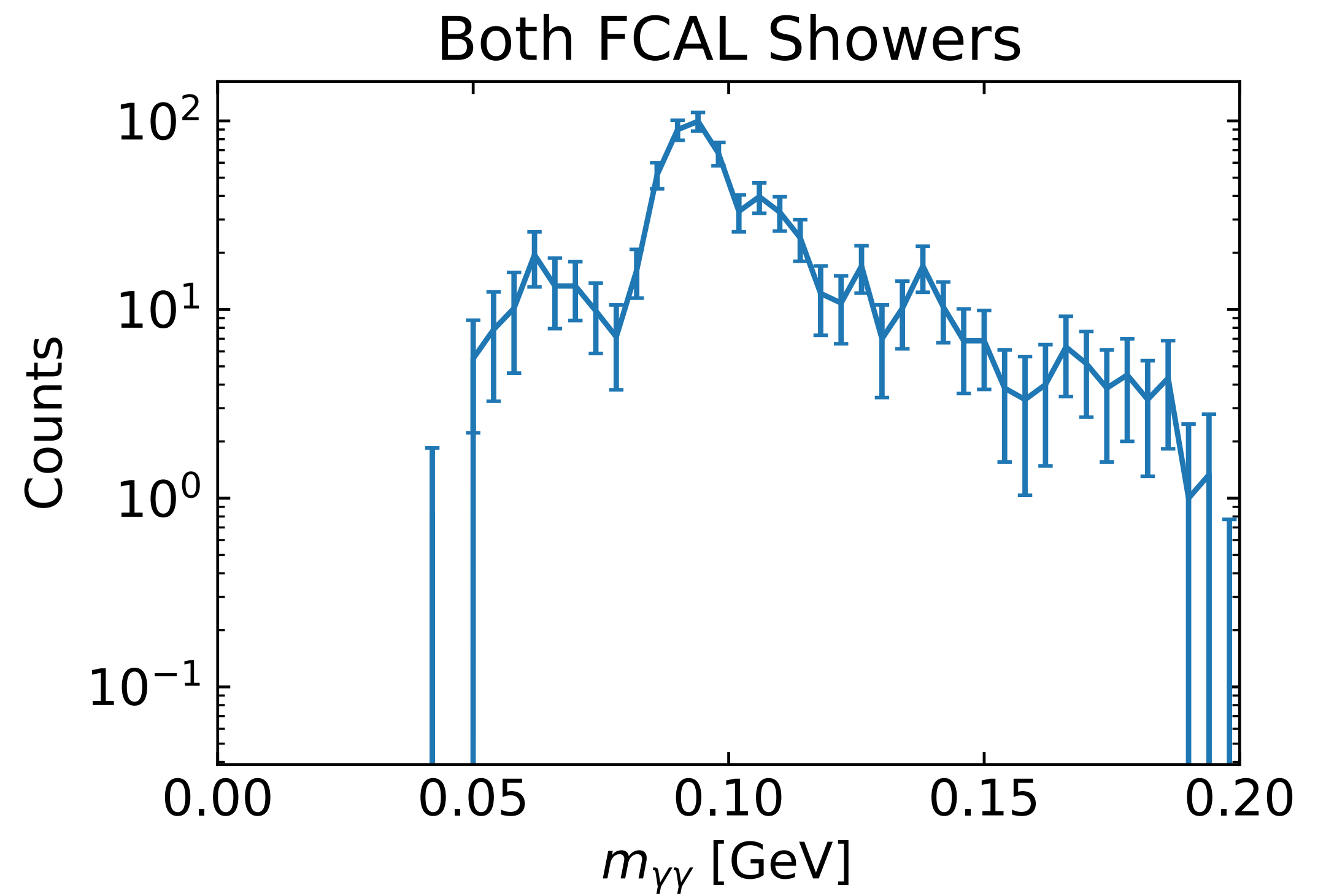
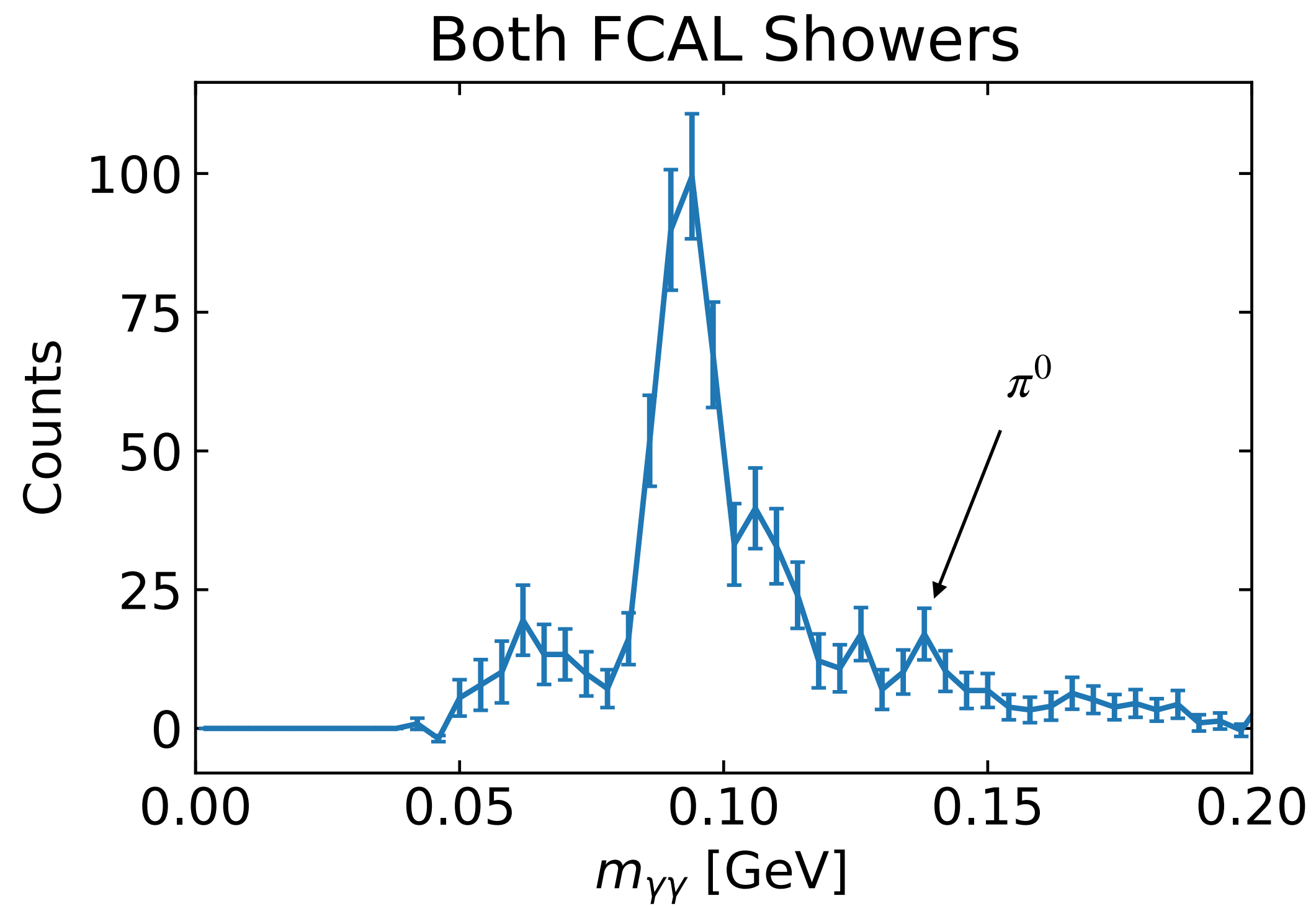
$$\theta_{\gamma\gamma} < 0.5^\circ$$



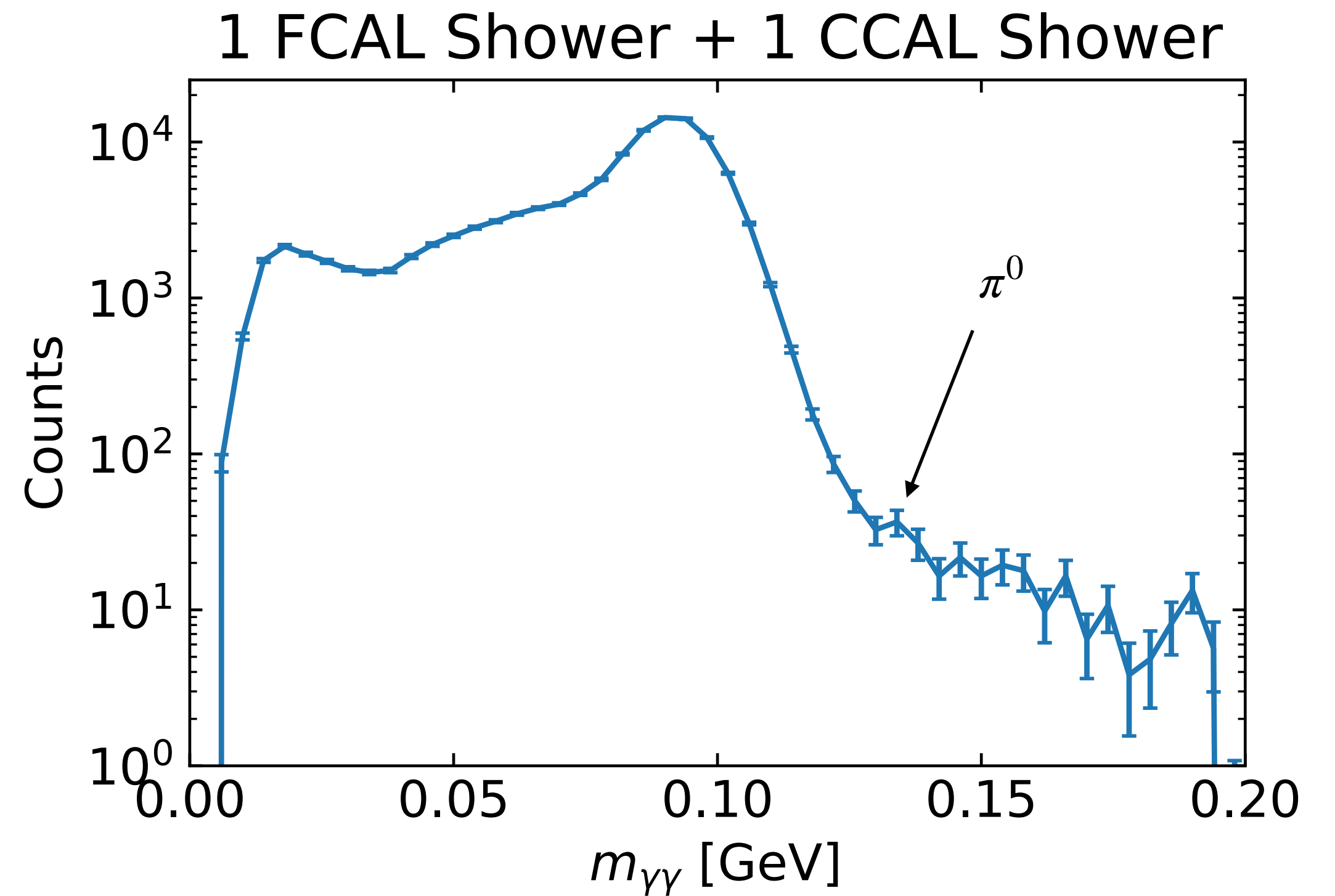
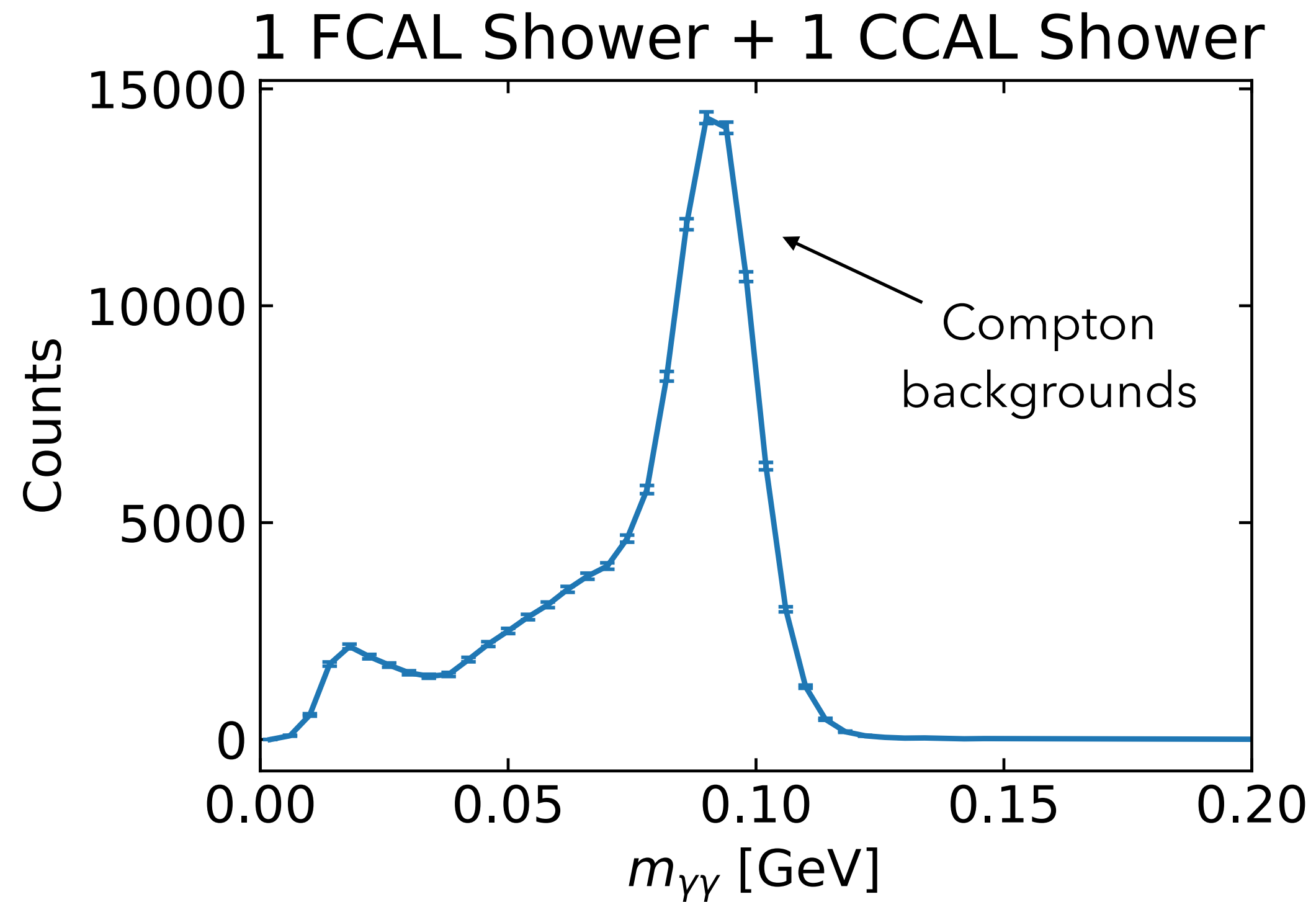
# CCAL Only



# FCAL Only



# 1 CCAL 1 FCAL Shower



Pi0 decays should be falling into FCAL for most events

