

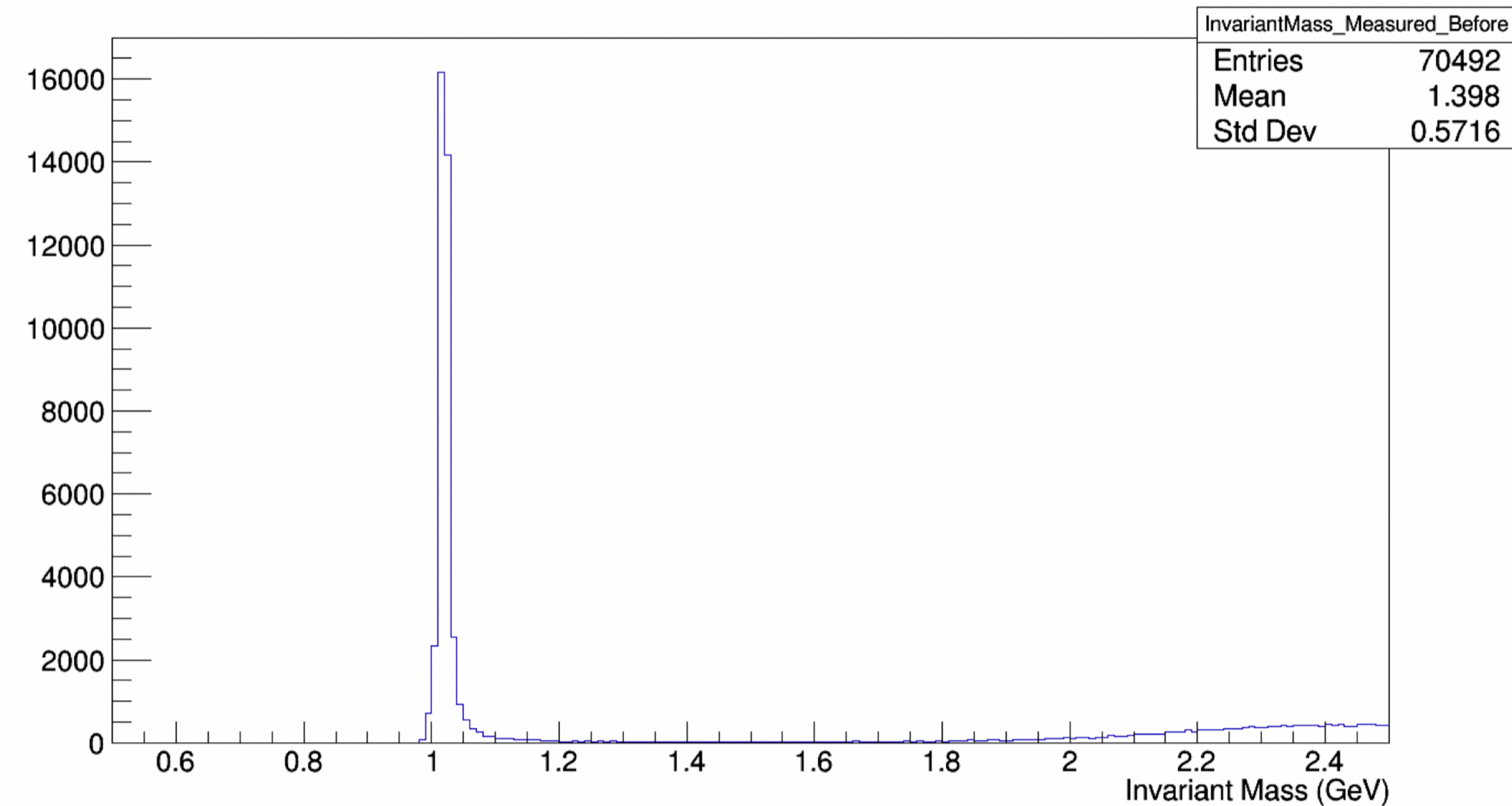
Simulation setup

- Generator: GCF of deuteron, courtesy of Jackson Pybus from Hen lab
- Tagged flux spectrum of Run 90220, courtesy of Sasha
- Sample of 100k events
- Run through GEANT4 version of GlueX model
- Reconstructed using the same code as real data
- $|t| > 1 \text{ GeV}$, $|u| > 1 \text{ GeV}$, can be adjusted later
- Random background not included, can be adjusted later

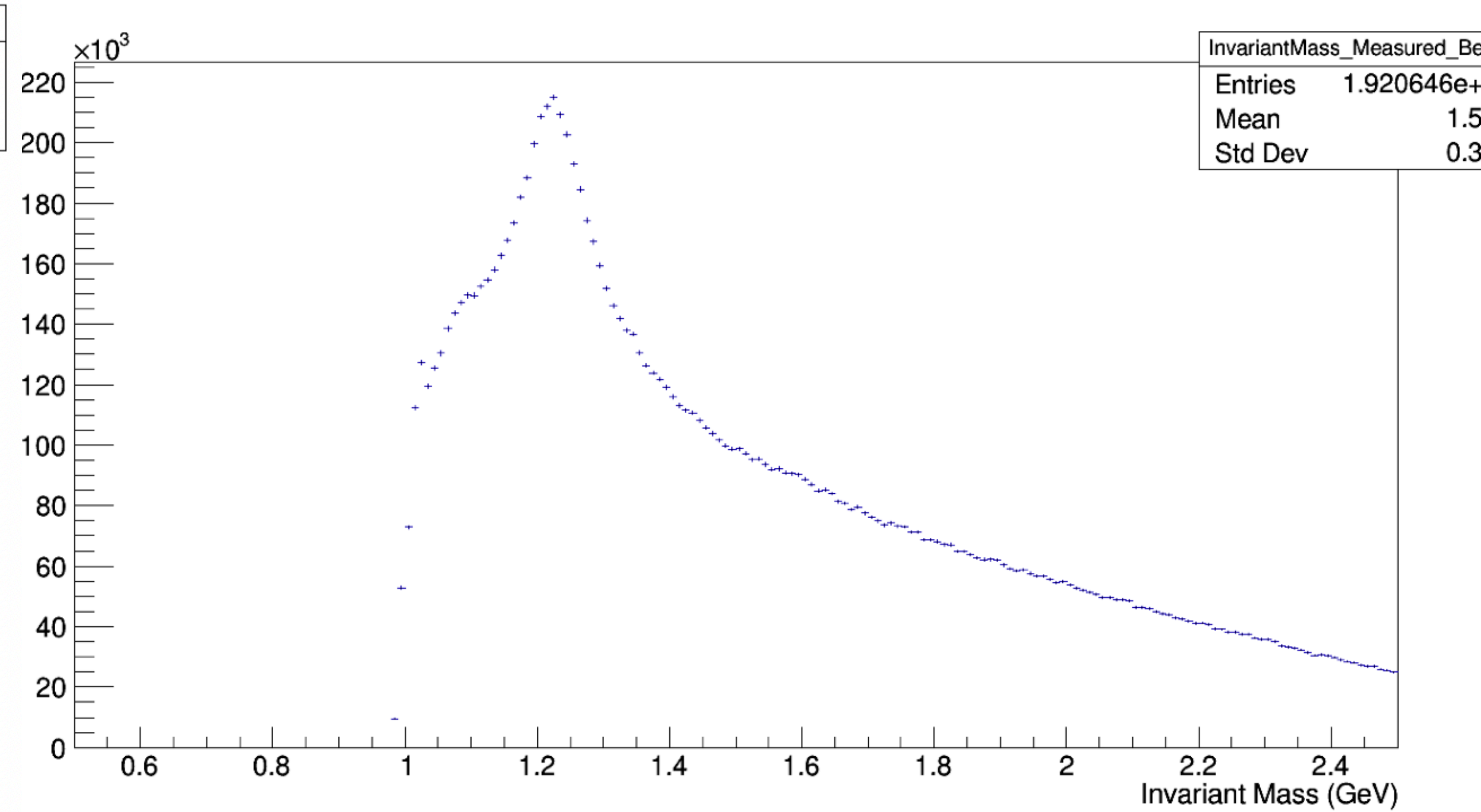
Simulation vs data

- Invariant mass of K^+K^- pair, using measured values

Simulation before all cuts



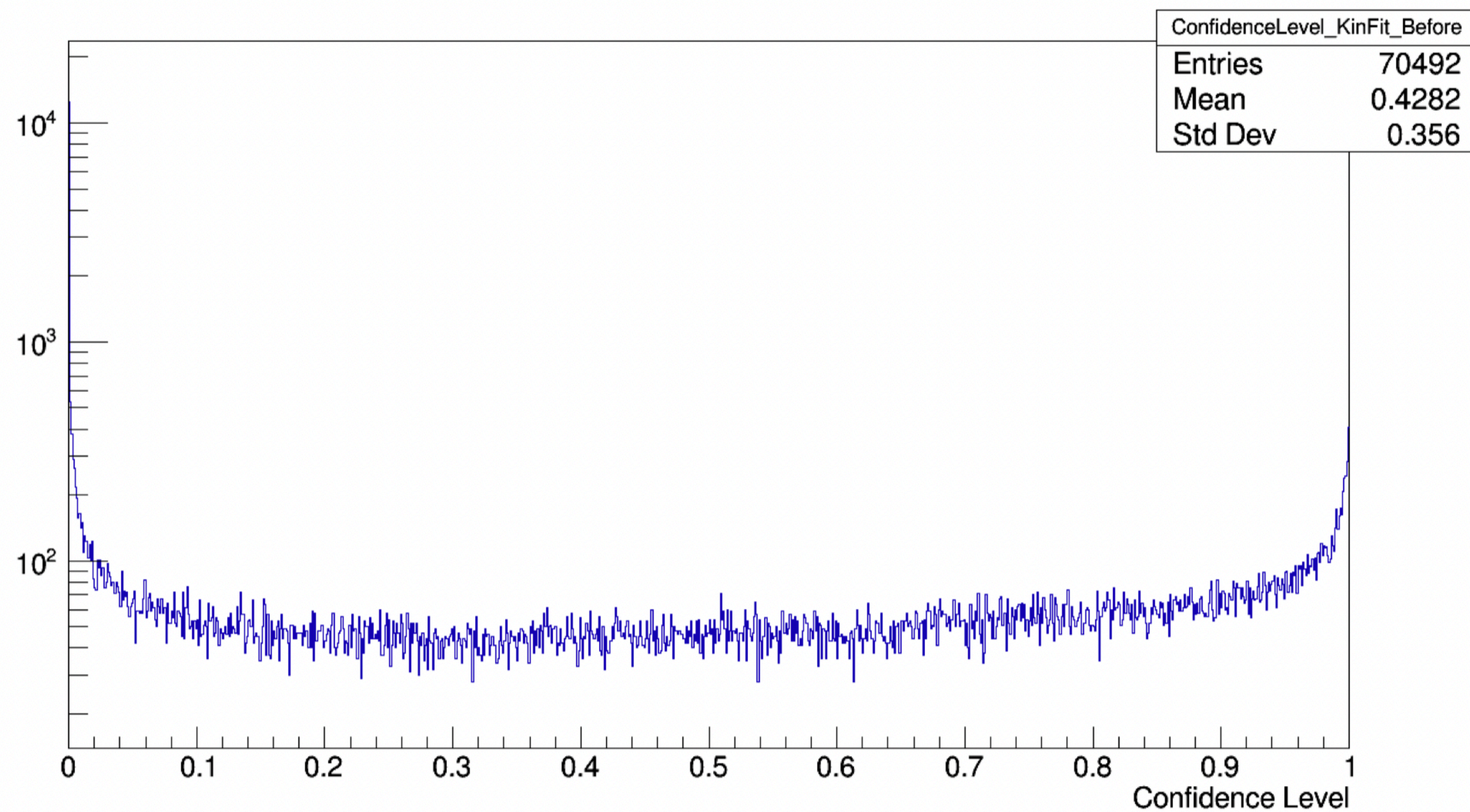
Data before all cuts



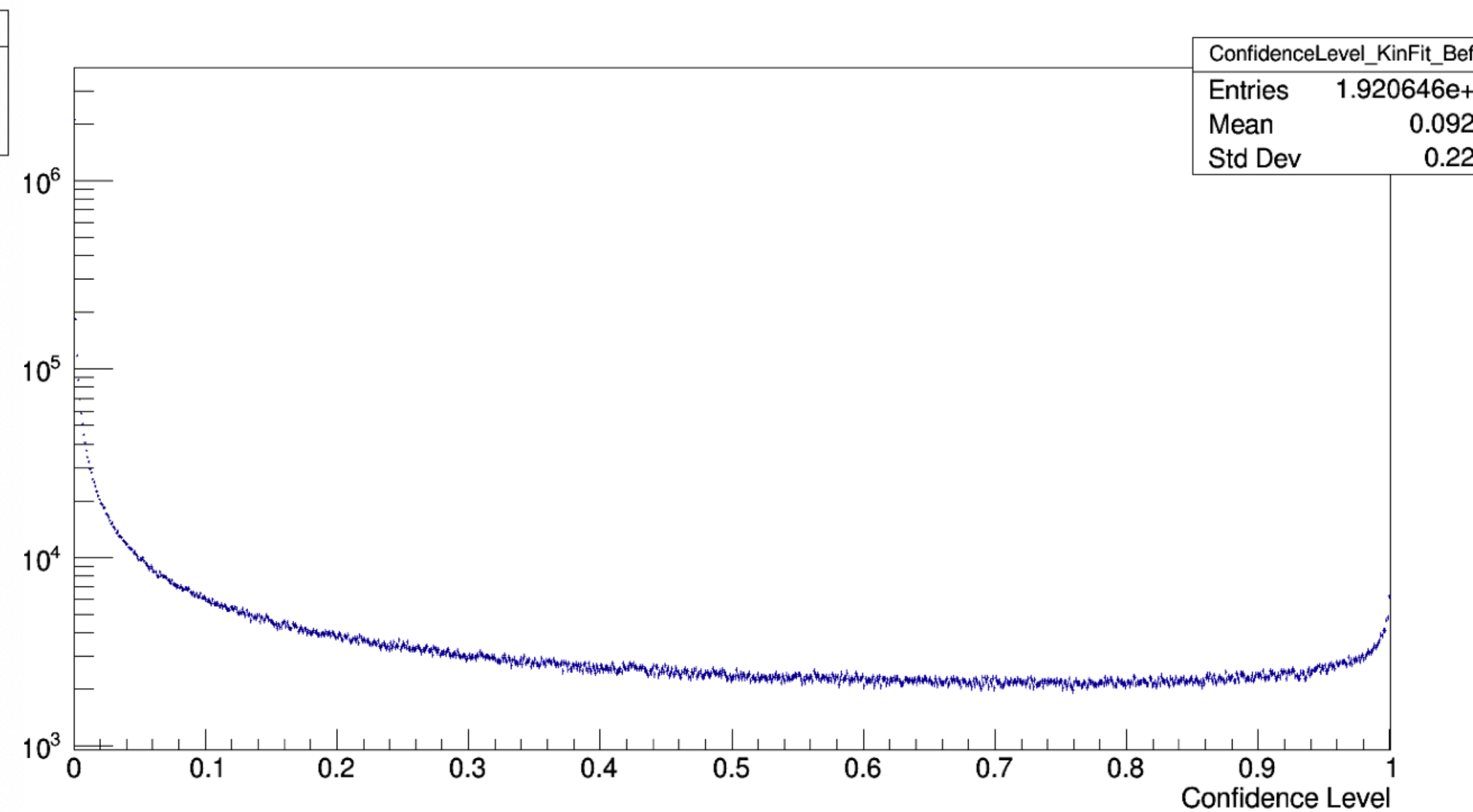
Simulation vs data

- Confidence level

Simulation before all cuts



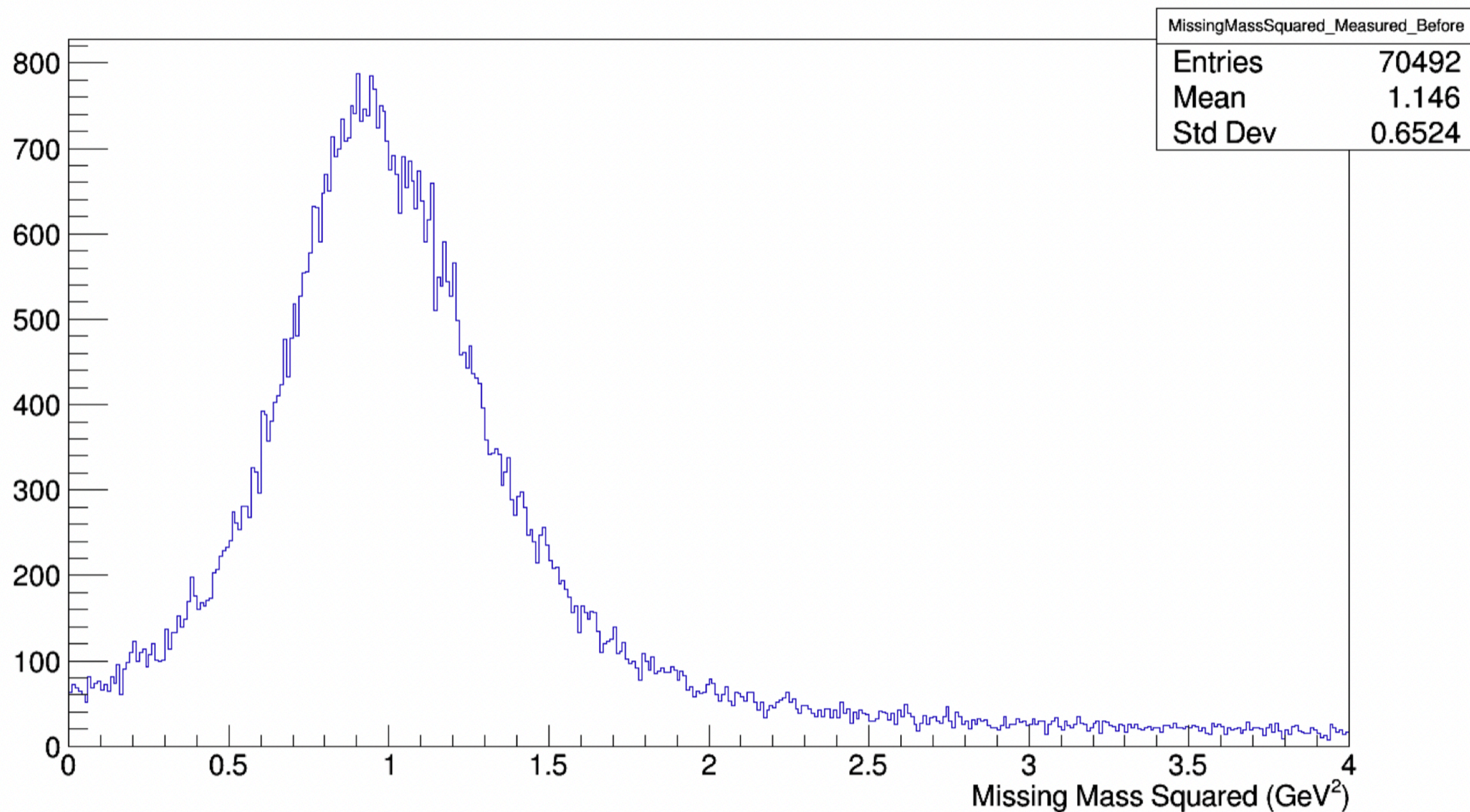
Data before all cuts



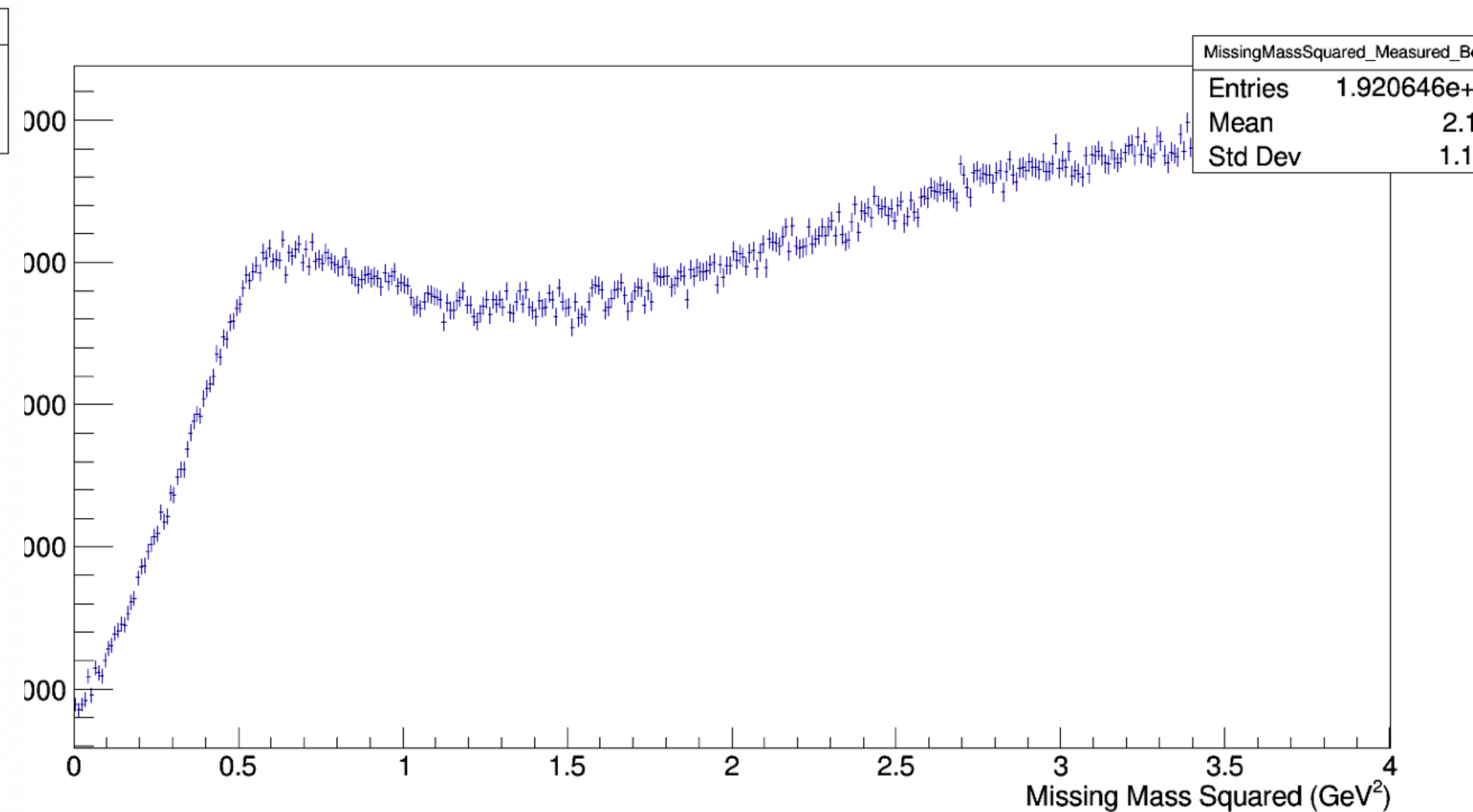
Simulation vs data

- Missing mass squared $(p_\gamma + p_d - p_\phi - p_p)^2$, using measured values
- For data, peak is shifted from neutron mass. FSI? Resolution issue?

Simulation before all cuts



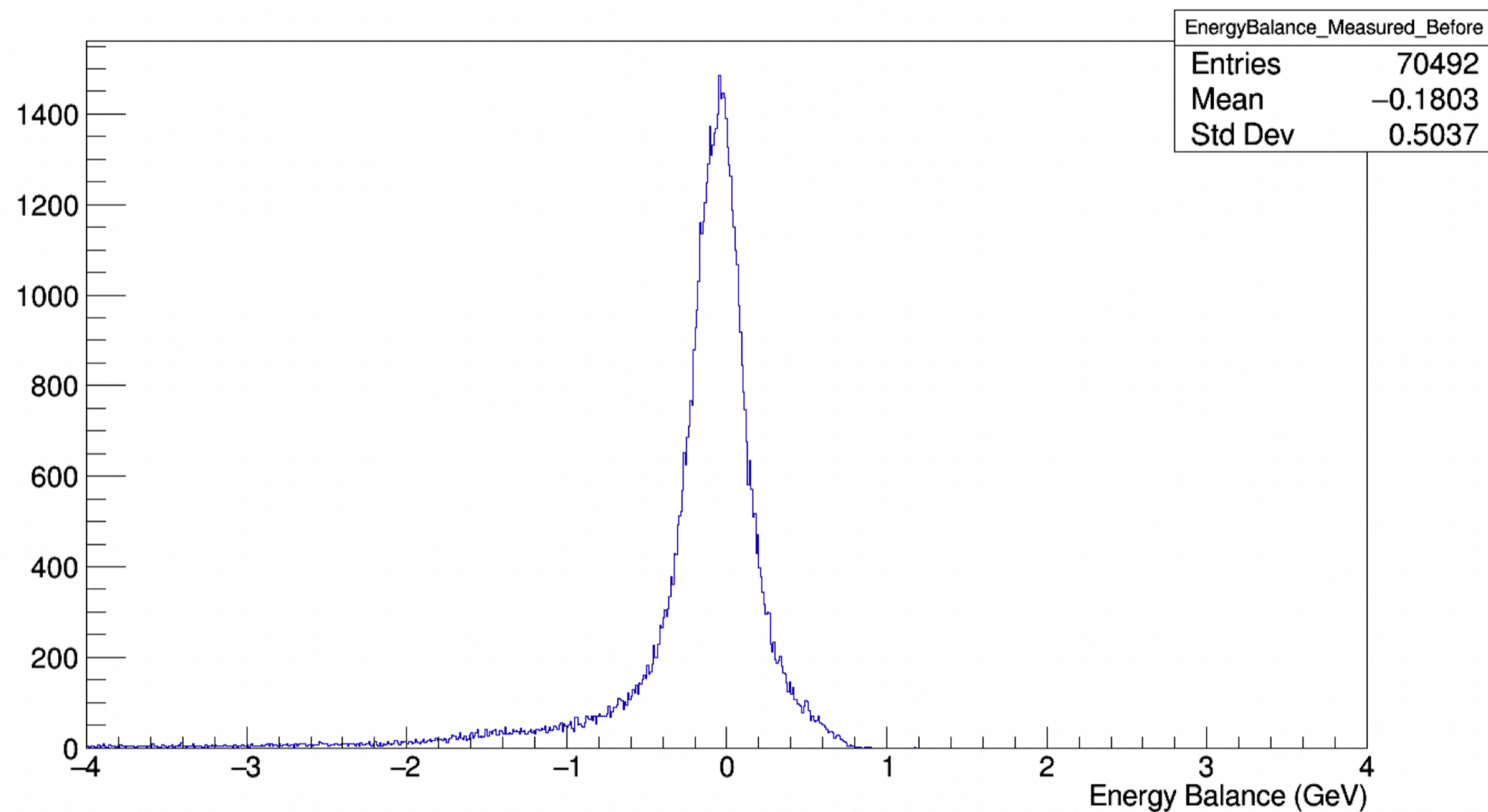
Data before all cuts



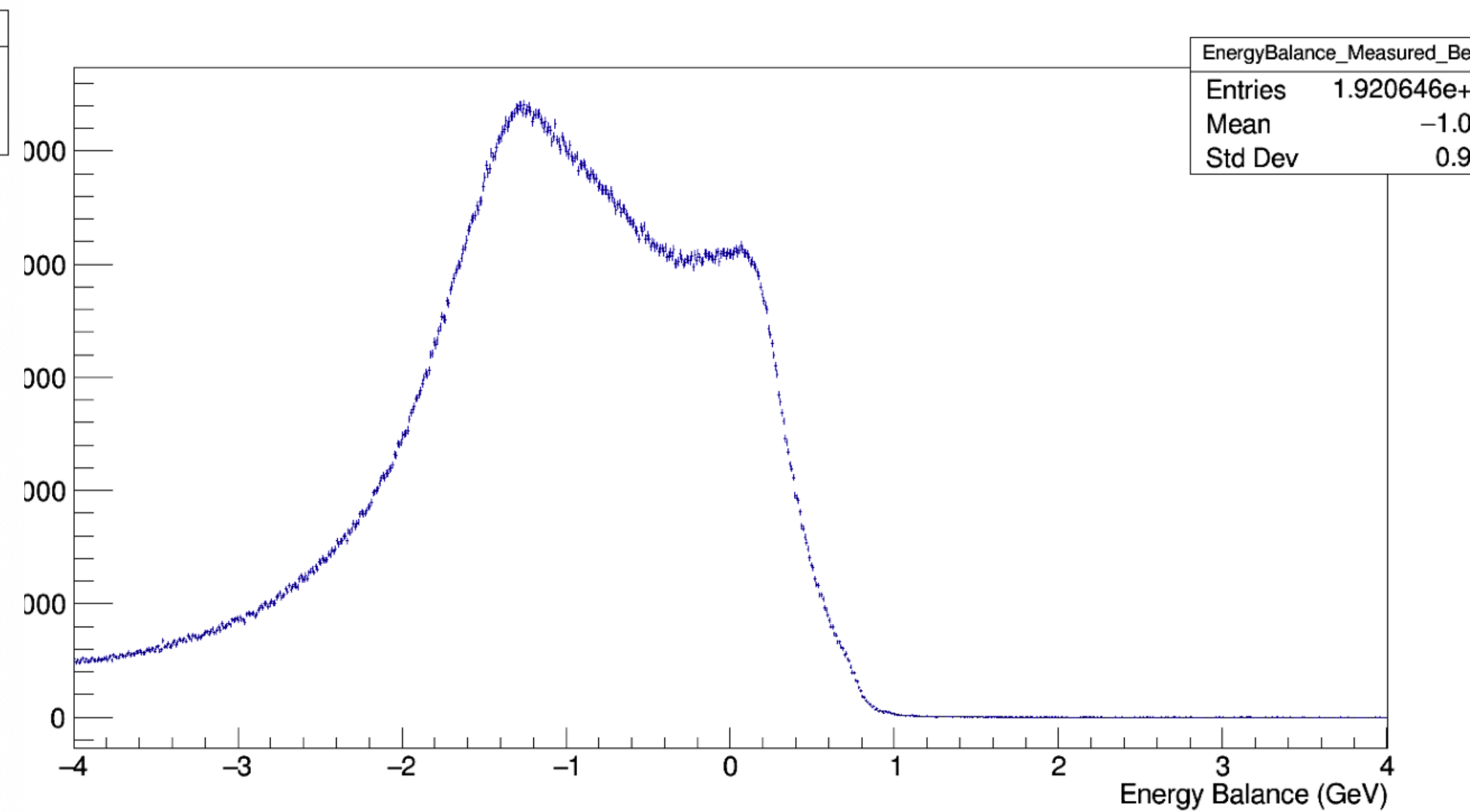
Simulation vs data

- Energy balance $|E_\phi + E_p - E_\gamma - m_p|$, using measured values

Simulation before all cuts



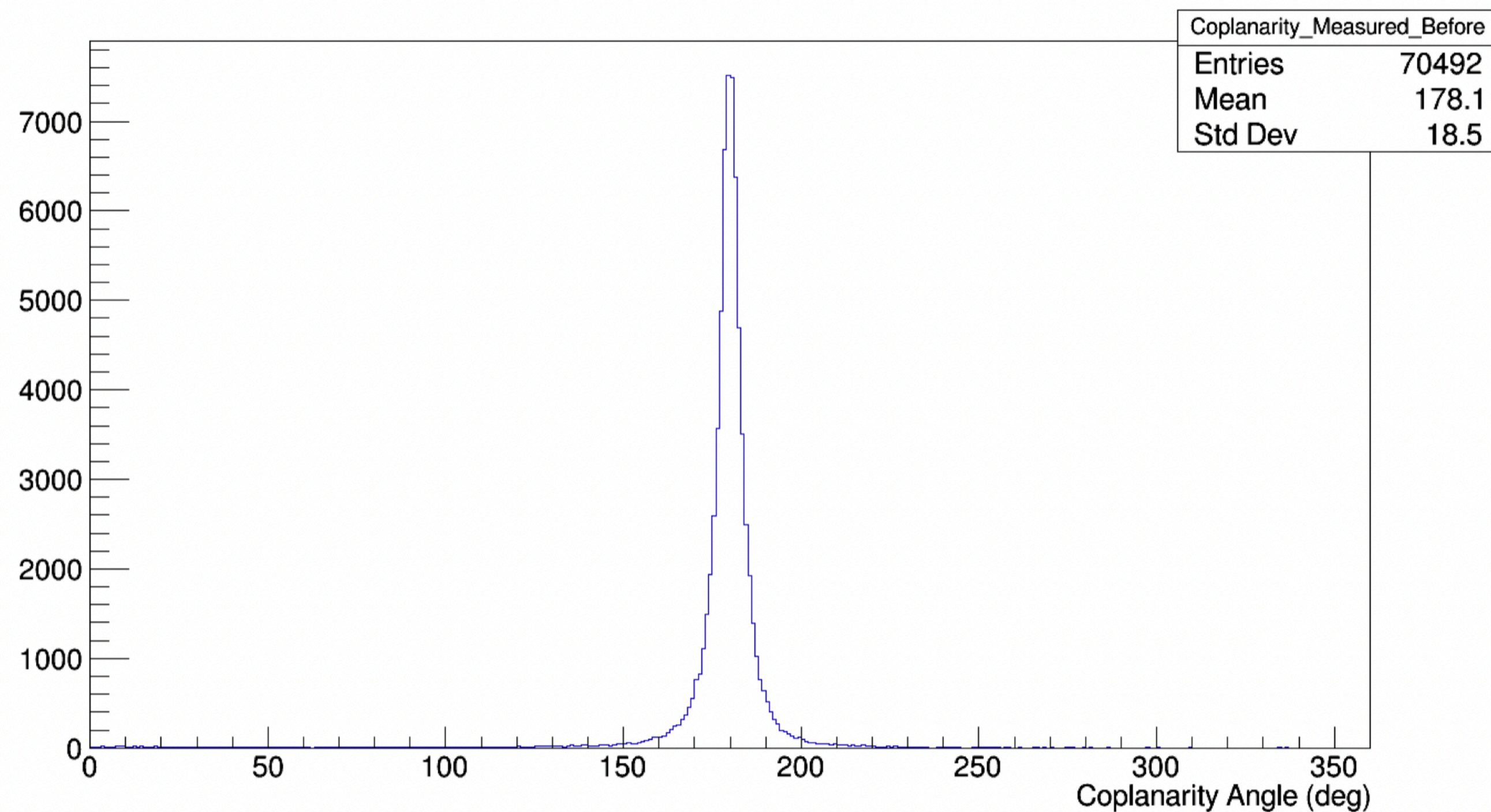
Data before all cuts



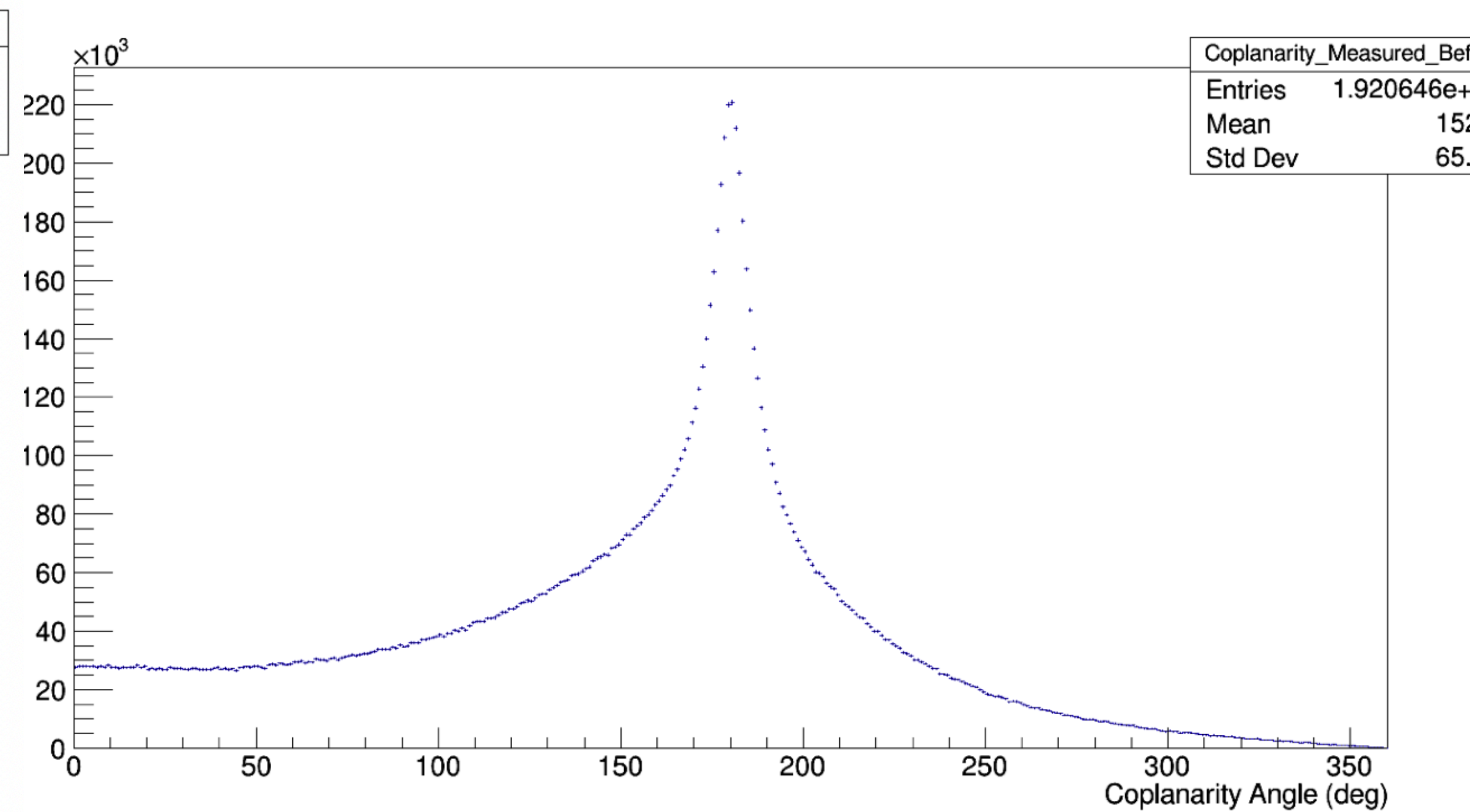
Simulation vs data

- Coplanarity angle $|\phi_\phi - \phi_p|$, using measured values

Simulation before all cuts

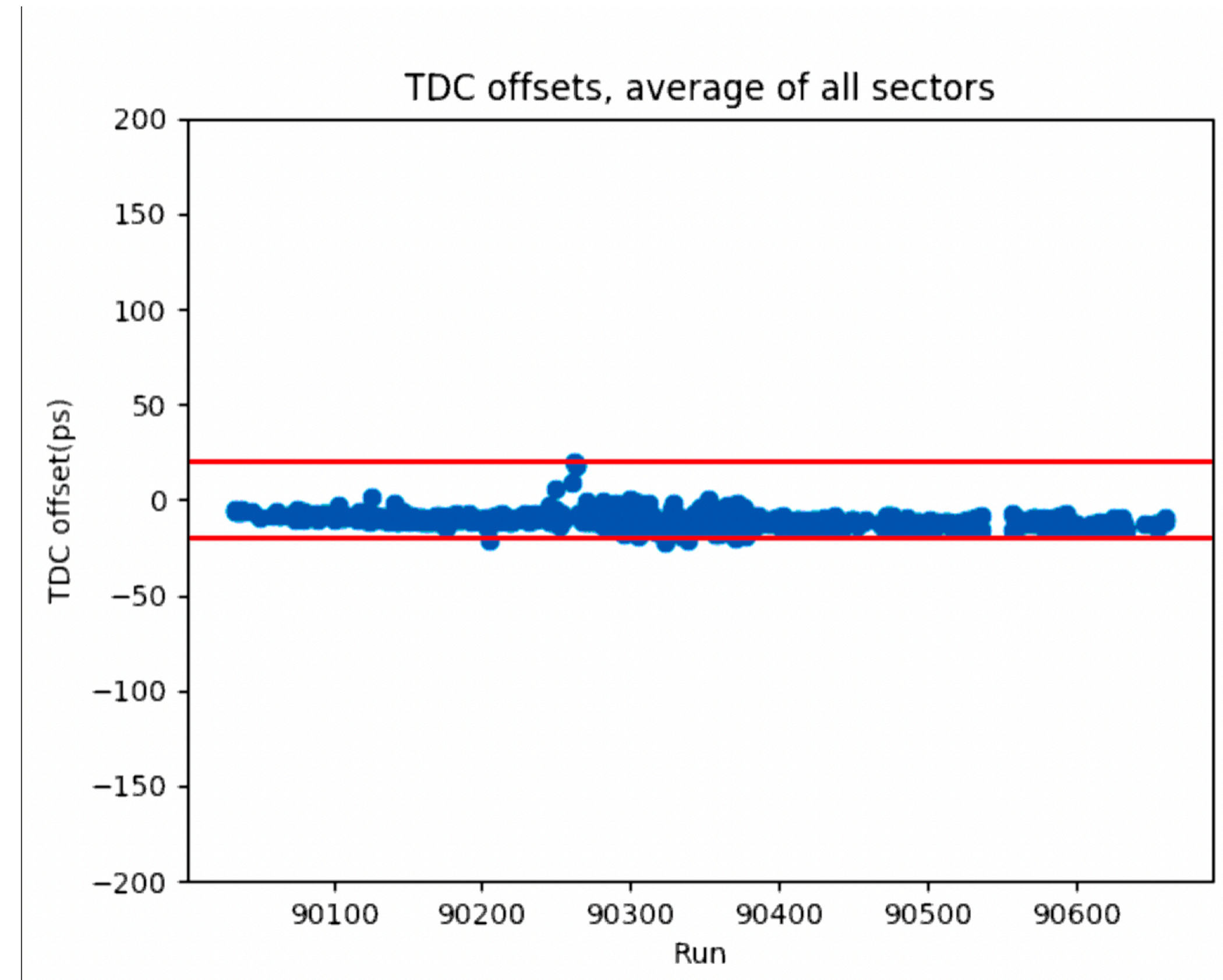
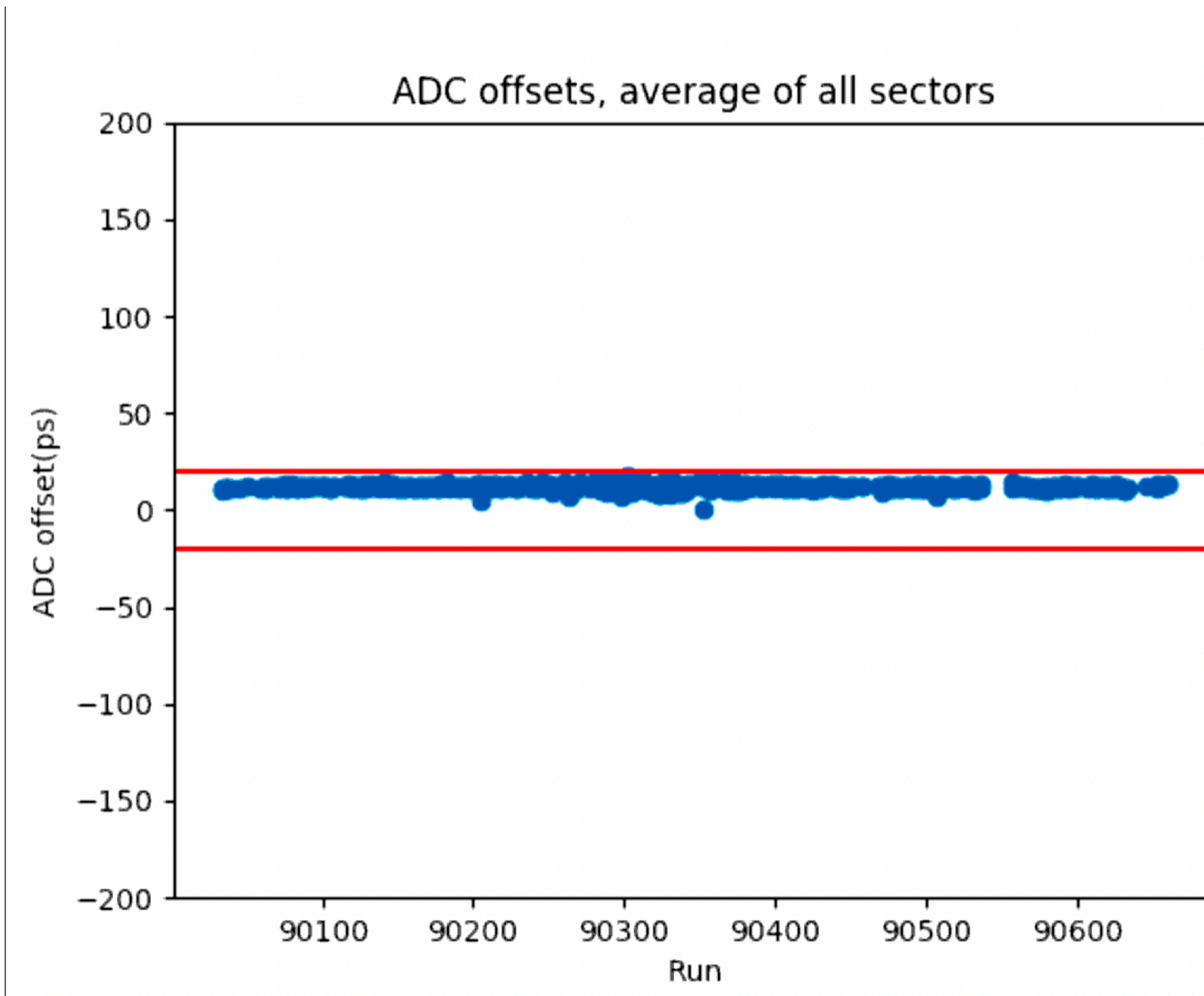


Data before all cuts



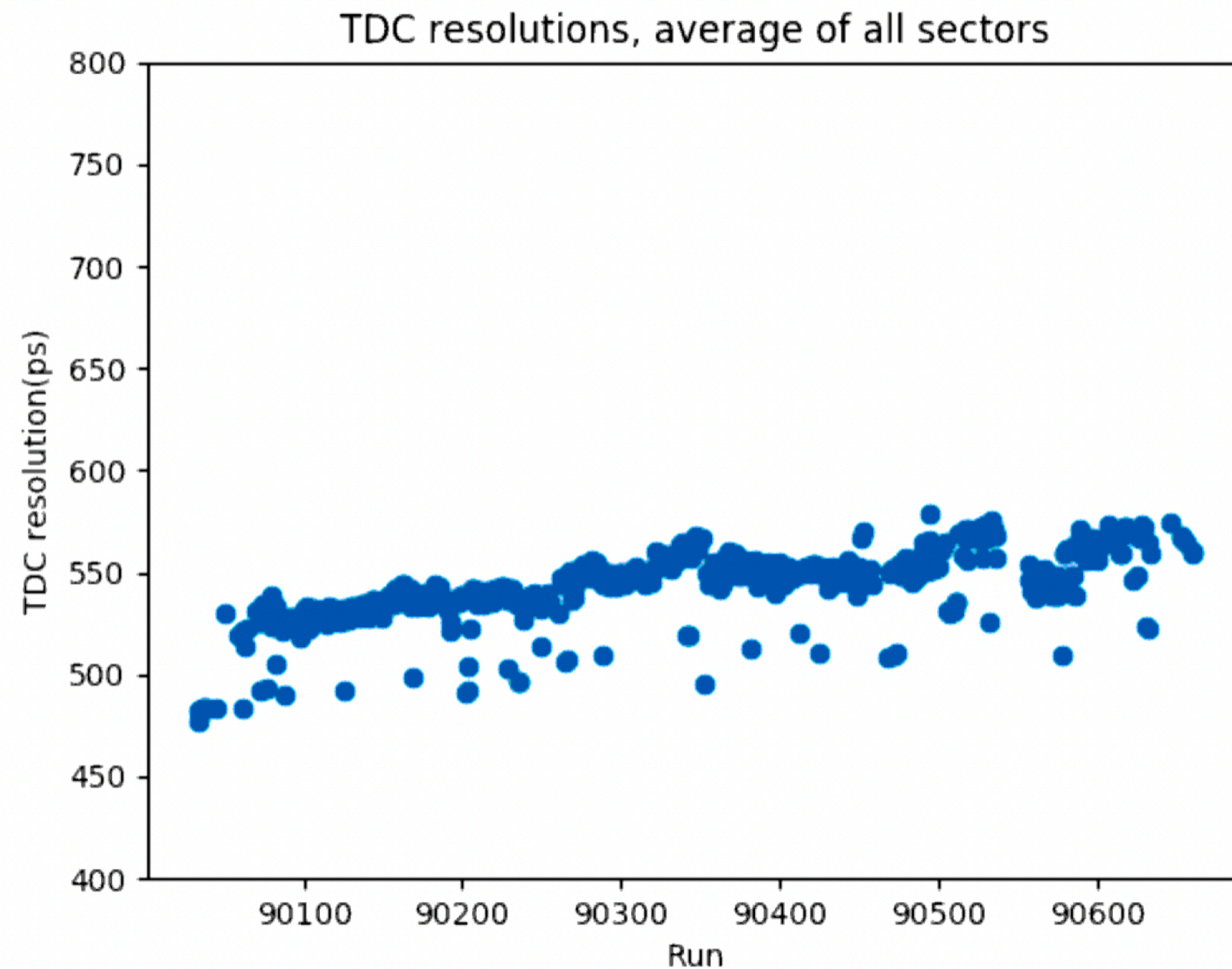
TAGM calibrations

- Monitoring version 5
- Average offset < 20 ps for all runs (channel 100 excluded)



TAGM calibrations

- Monitoring version 5
- TDC resolutions and remaining problems



```
90102: max TDC offset is 225.00 ps, greater than 100 ps  
90288: max TDC offset is 102.00 ps, greater than 100 ps
```


ST calibrations

- Monitoring version 5
- Average offset < 150 ps for all runs except 90615 and 90616

