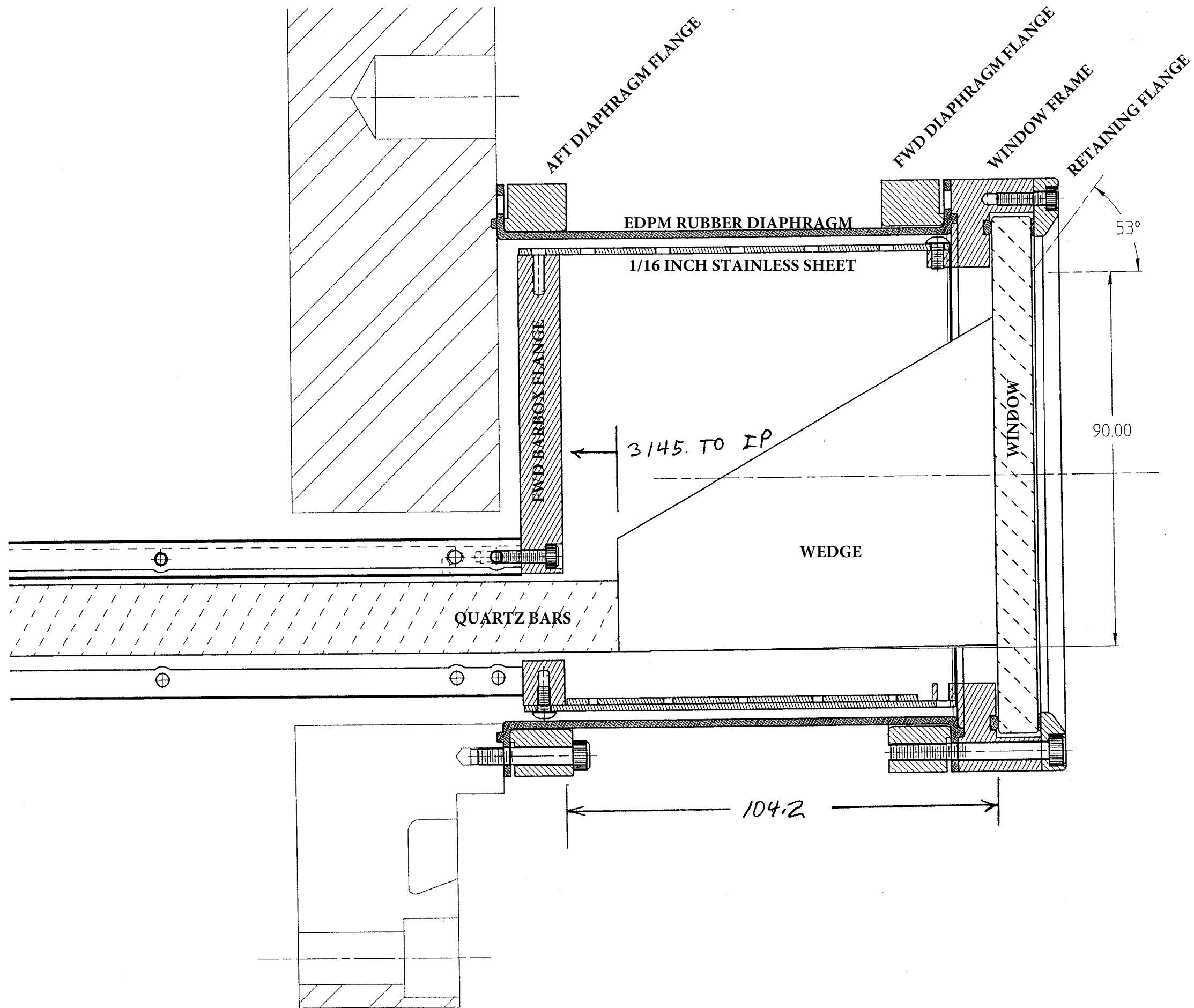
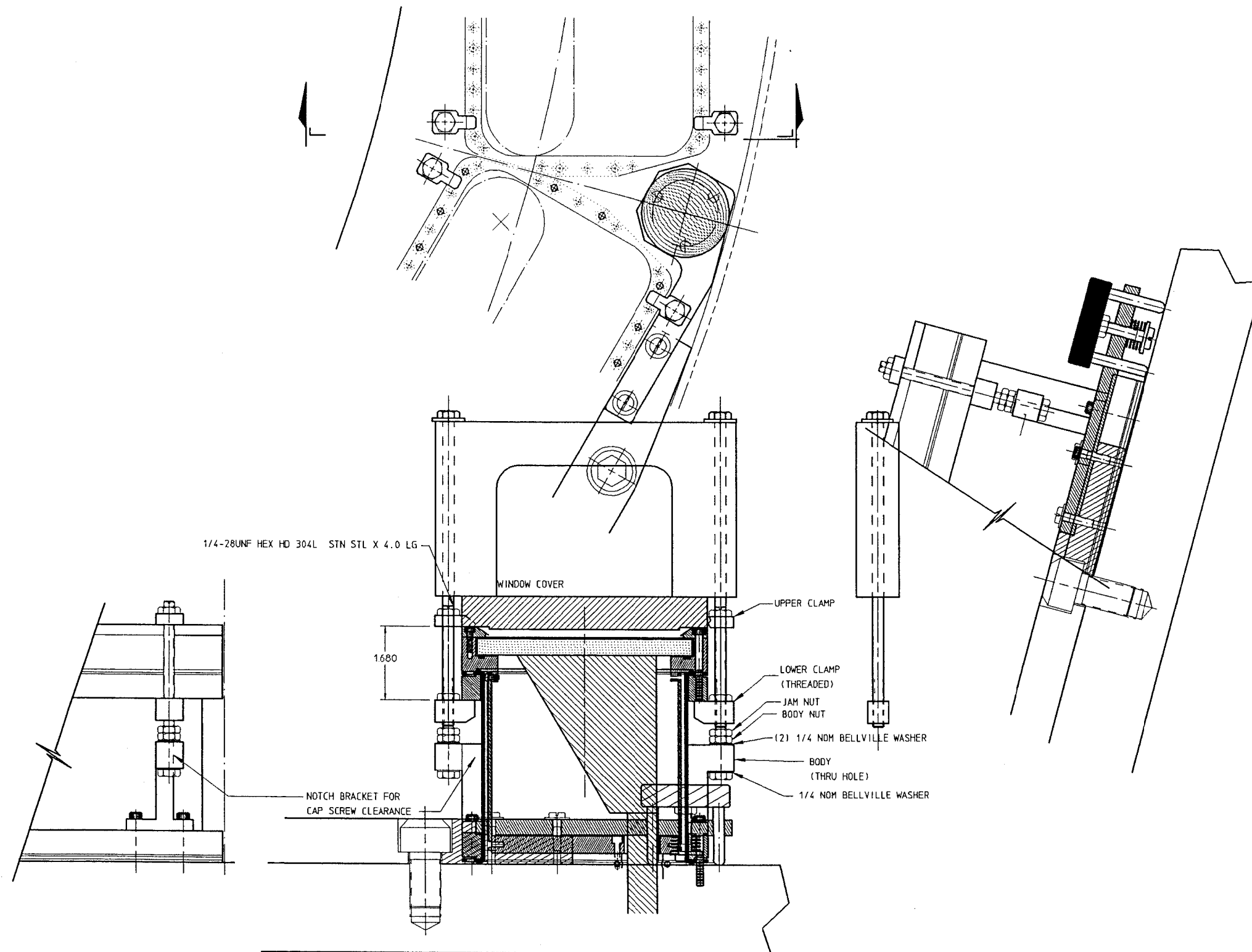


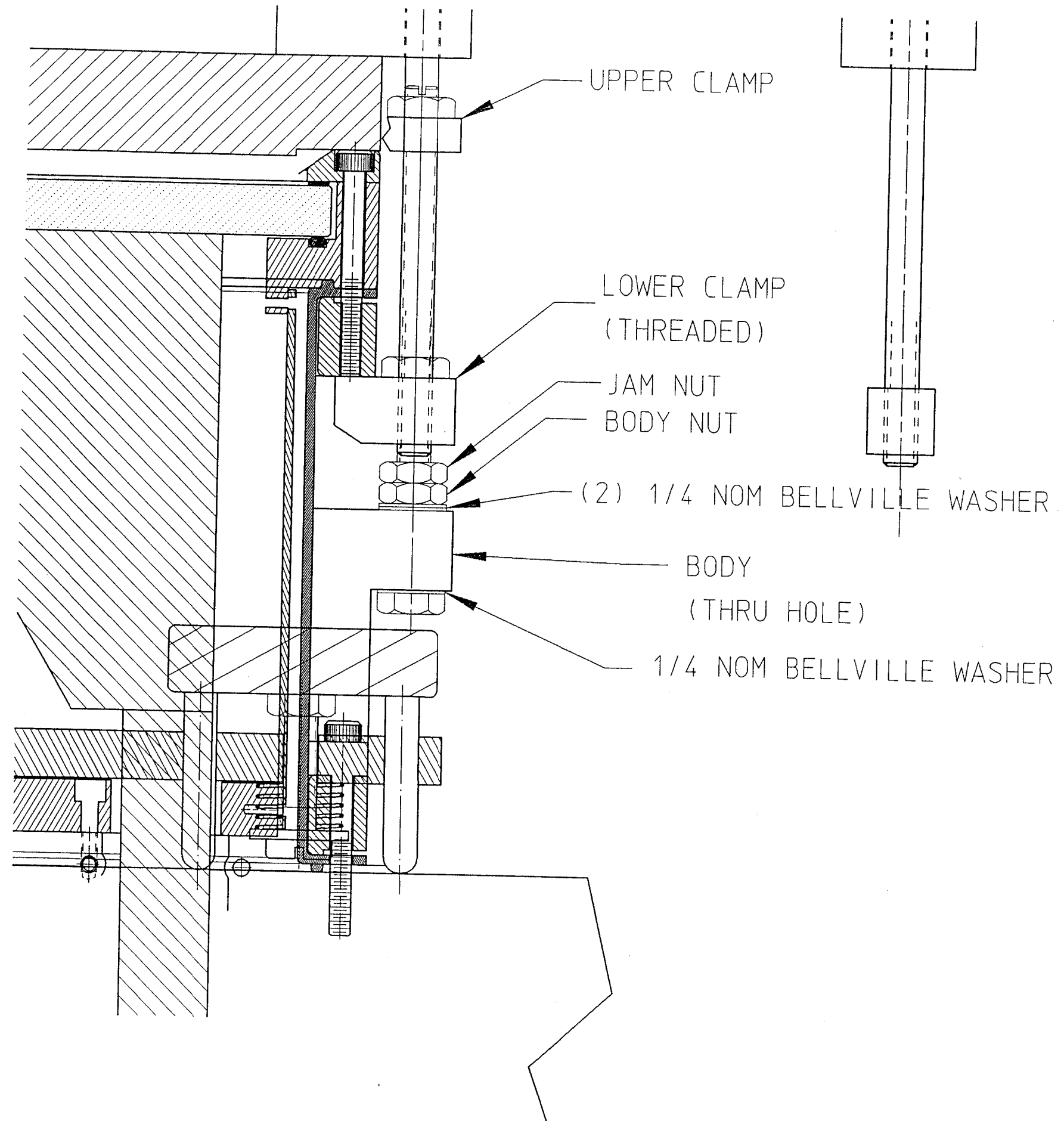
SCHEMATIC OF DIRC BARBOX ASSEMBLY

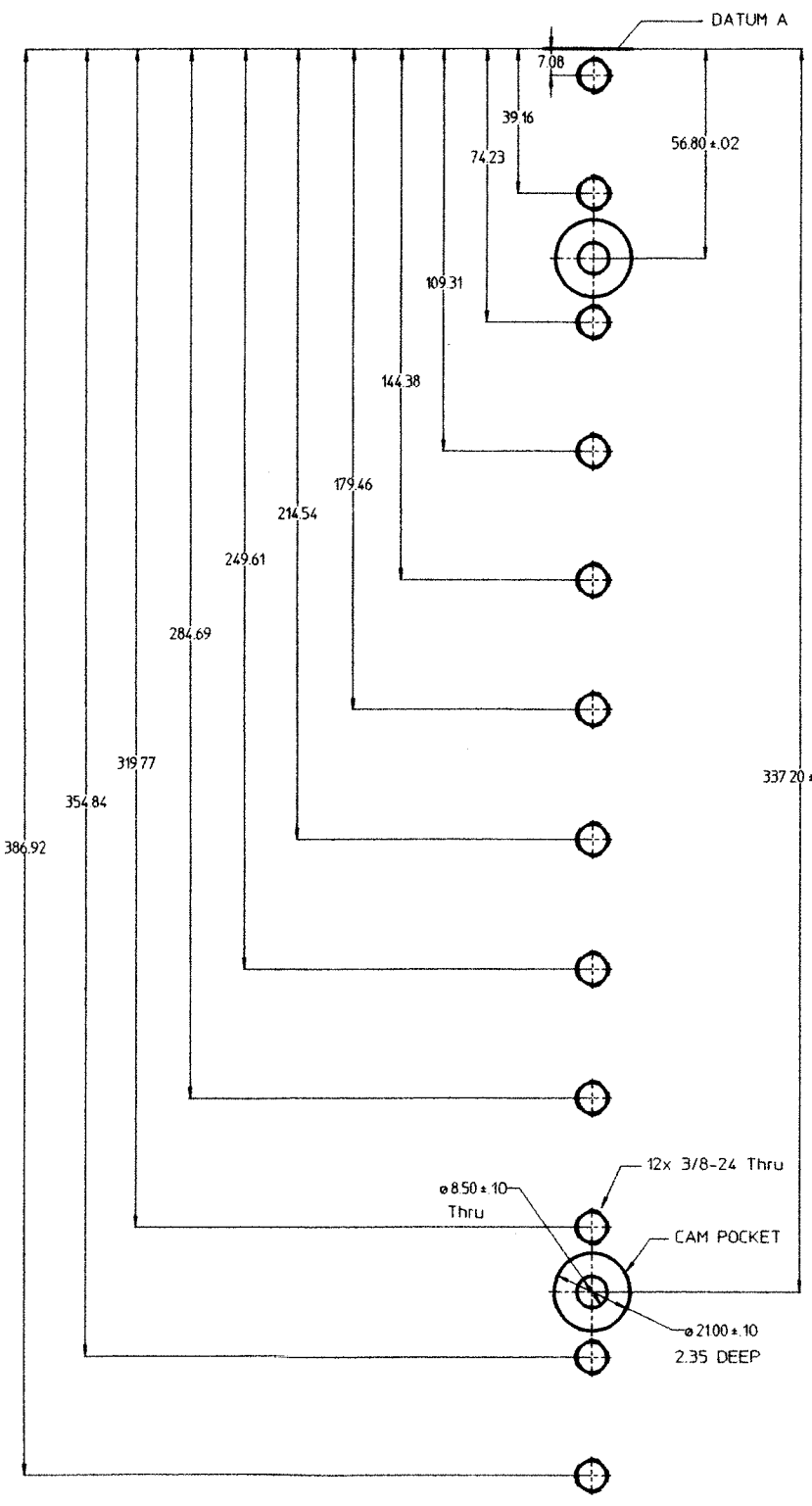




**DIRC BAR BOX
WINDOW SEISMIC RESTRAINT
(LAZER MIRROR INTERFACE)**

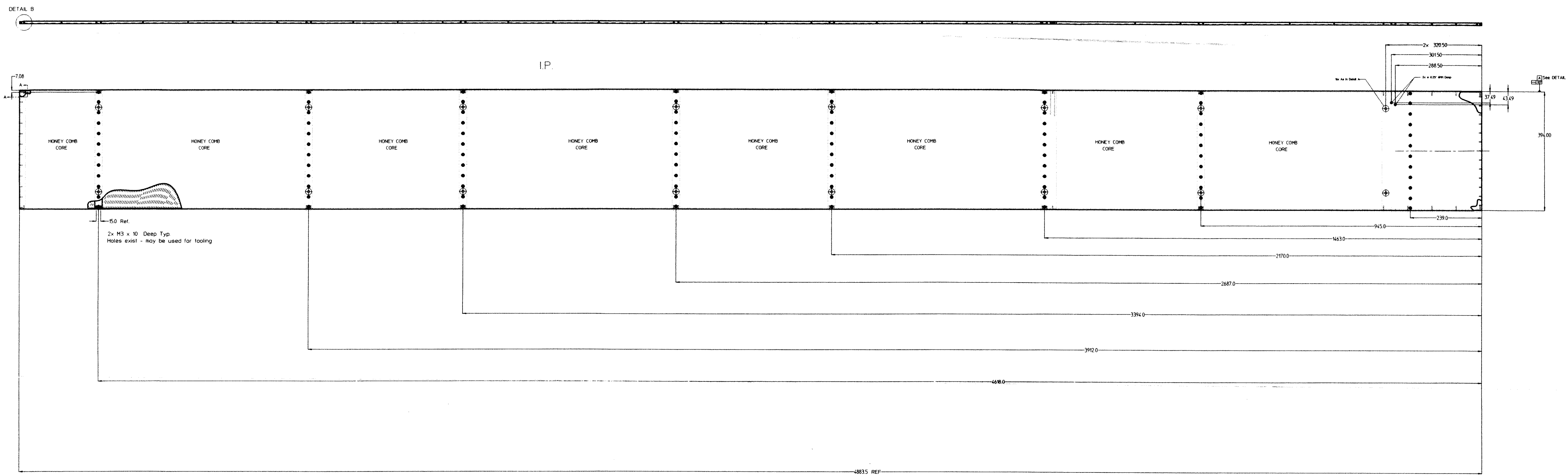
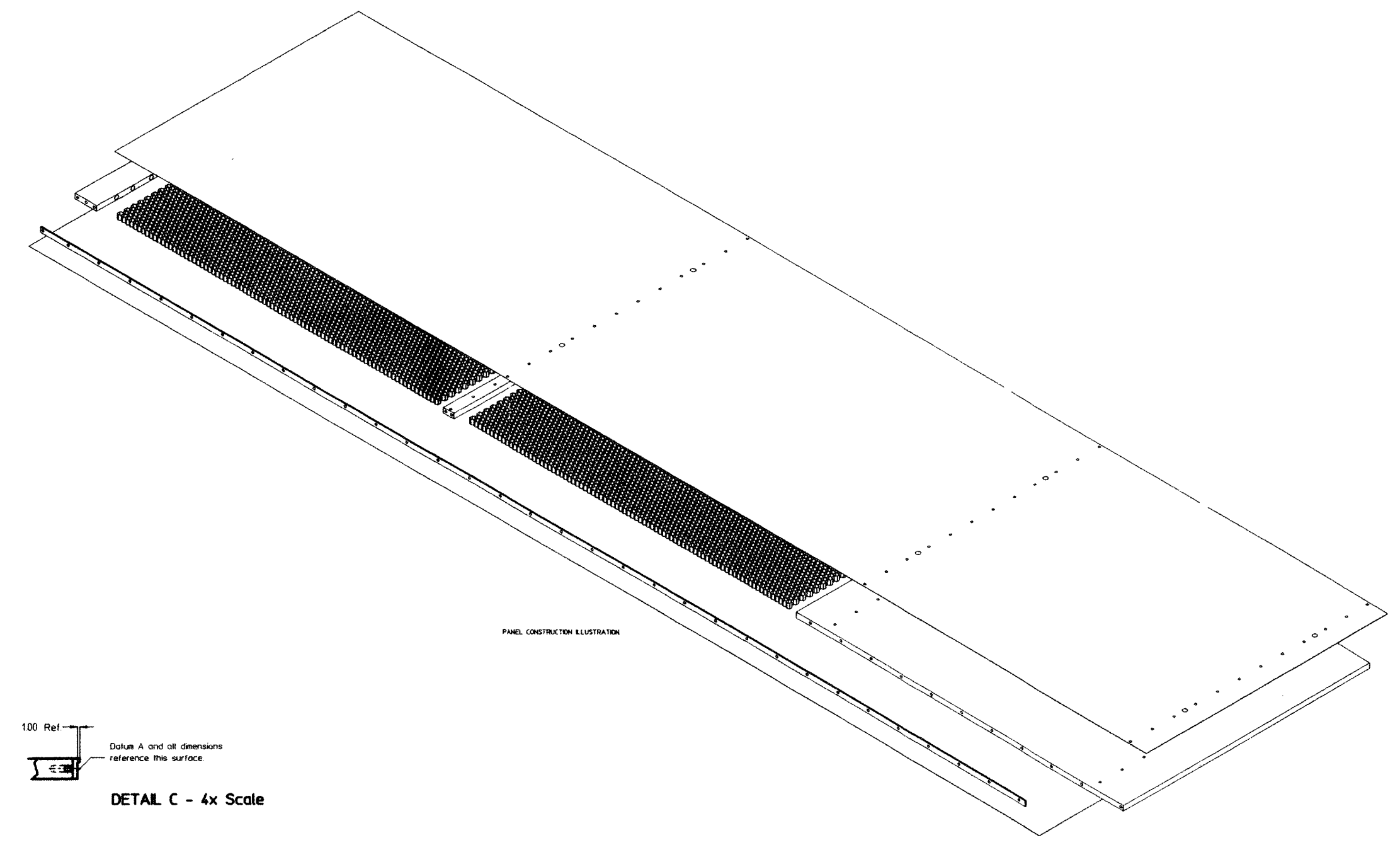
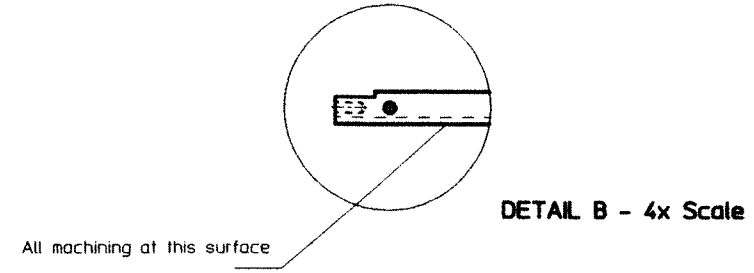
R. CAYLOR 1/19/98
REVISED 2/11/98 C.A. MATUK





DETAIL A - 4x Scale
8 Places (1 Without Pockets)

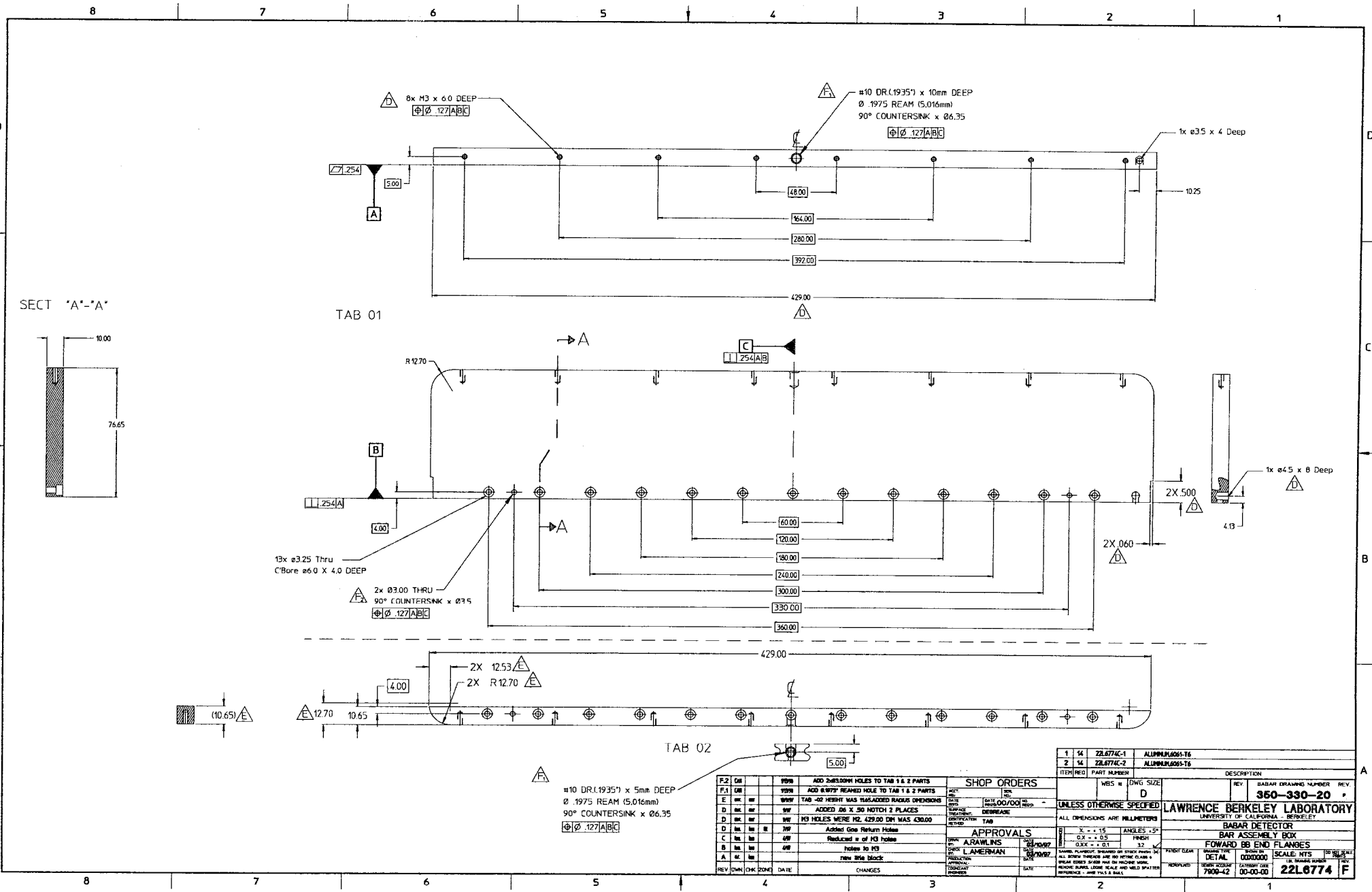
- NOTES:
1. Panel consists of aluminum honeycomb core with aluminum inserts as shown. Cover skins are 0.010" thick aluminum sheets.
 2. Material must be kept clean & free from oils.
 3. A .025 to 0.40mm cleanup cut required on each end. LBNL personnel will specify amount for each panel.
 4. EDGE may be used as datum.
 5. Water may be used as coolant.



150 REF
SEE NOTE 3

221.9306D

ITEM NO.		REV	DATE	DESCRIPTION	WBS #	DWG SIZE	SCALE	BARBAR DRAWING NUMBER	REV.
1		15	22.9306	PANEL PROVIDED		E			
2		15	22.9306	PANEL PROVIDED		E			
3		15	22.9306	PANEL PROVIDED		E			
4		15	22.9306	PANEL PROVIDED		E			
5		15	22.9306	PANEL PROVIDED		E			
6		15	22.9306	PANEL PROVIDED		E			
7		15	22.9306	PANEL PROVIDED		E			
8		15	22.9306	PANEL PROVIDED		E			
9		15	22.9306	PANEL PROVIDED		E			
10		15	22.9306	PANEL PROVIDED		E			
11		15	22.9306	PANEL PROVIDED		E			
12		15	22.9306	PANEL PROVIDED		E			
13		15	22.9306	PANEL PROVIDED		E			
14		15	22.9306	PANEL PROVIDED		E			
15		15	22.9306	PANEL PROVIDED		E			
16		15	22.9306	PANEL PROVIDED		E			
17		15	22.9306	PANEL PROVIDED		E			
18		15	22.9306	PANEL PROVIDED		E			
19		15	22.9306	PANEL PROVIDED		E			
20		15	22.9306	PANEL PROVIDED		E			
21		15	22.9306	PANEL PROVIDED		E			
22		15	22.9306	PANEL PROVIDED		E			
23		15	22.9306	PANEL PROVIDED		E			
24		15	22.9306	PANEL PROVIDED		E			
25		15	22.9306	PANEL PROVIDED		E			
26		15	22.9306	PANEL PROVIDED		E			
27		15	22.9306	PANEL PROVIDED		E			
28		15	22.9306	PANEL PROVIDED		E			
29		15	22.9306	PANEL PROVIDED		E			
30		15	22.9306	PANEL PROVIDED		E			
31		15	22.9306	PANEL PROVIDED		E			
32		15	22.9306	PANEL PROVIDED		E			
33		15	22.9306	PANEL PROVIDED		E			
34		15	22.9306	PANEL PROVIDED		E			
35		15	22.9306	PANEL PROVIDED		E			
36		15	22.9306	PANEL PROVIDED		E			
37		15	22.9306	PANEL PROVIDED		E			
38		15	22.9306	PANEL PROVIDED		E			
39		15	22.9306	PANEL PROVIDED		E			
40		15	22.9306	PANEL PROVIDED		E			
41		15	22.9306	PANEL PROVIDED		E			
42		15	22.9306	PANEL PROVIDED		E			
43		15	22.9306	PANEL PROVIDED		E			
44		15	22.9306	PANEL PROVIDED		E			
45		15	22.9306	PANEL PROVIDED		E			
46		15	22.9306	PANEL PROVIDED		E			
47		15	22.9306	PANEL PROVIDED		E			
48		15	22.9306	PANEL PROVIDED		E			
49		15	22.9306	PANEL PROVIDED		E			
50		15	22.9306	PANEL PROVIDED		E			
51		15	22.9306	PANEL PROVIDED		E			
52		15	22.9306	PANEL PROVIDED		E			
53		15	22.9306	PANEL PROVIDED		E			
54		15	22.9306	PANEL PROVIDED		E			
55		15	22.9306	PANEL PROVIDED		E			
56		15	22.9306	PANEL PROVIDED		E			
57		15	22.9306	PANEL PROVIDED		E			
58		15	22.9306	PANEL PROVIDED		E			
59		15	22.9306	PANEL PROVIDED		E			
60		15	22.9306	PANEL PROVIDED		E			
61		15	22.9306	PANEL PROVIDED		E			
62		15	22.9306	PANEL PROVIDED		E			
63		15	22.9306	PANEL PROVIDED		E			
64		15	22.9306	PANEL PROVIDED		E			
65		15	22.9306	PANEL PROVIDED		E			
66		15	22.9306	PANEL PROVIDED		E			
67		15	22.9306	PANEL PROVIDED		E			
68		15	22.9306	PANEL PROVIDED		E			
69		15	22.9306	PANEL PROVIDED		E			
70		15	22.9306	PANEL PROVIDED		E			
71		15	22.9306	PANEL PROVIDED		E			
72		15	22.9306	PANEL PROVIDED		E			
73		15	22.9306	PANEL PROVIDED		E			
74		15	22.9306	PANEL PROVIDED		E			
75		15	22.9306	PANEL PROVIDED		E			
76		15	22.9306	PANEL PROVIDED		E			
77		15	22.9306	PANEL PROVIDED		E			
78		15	22.9306	PANEL PROVIDED		E			
79		15	22.9306	PANEL PROVIDED		E			
80		15	22.9306	PANEL PROVIDED		E			
81		15	22.9306	PANEL PROVIDED		E			
82		15	22.9306	PANEL PROVIDED		E			
83		15	22.9306	PANEL PROVIDED		E			
84		15	22.9306	PANEL PROVIDED		E			
85		15	22.9306	PANEL PROVIDED		E			
86		15	22.9306	PANEL PROVIDED		E			
87		15	22.9306	PANEL PROVIDED		E			
88		15	22.9306	PANEL PROVIDED		E			
89		15	22.9306	PANEL PROVIDED		E			
90		15	22.9306	PANEL PROVIDED		E			
91		15	22.9306	PANEL PROVIDED		E			
92		15	22.9306	PANEL PROVIDED		E			
93		15	22.9306	PANEL PROVIDED		E			
94		15	22.9306	PANEL PROVIDED		E			
95		15	22.9306	PANEL PROVIDED		E			
96		15	22.9306	PANEL PROVIDED		E			
97		15	22.9306	PANEL PROVIDED		E			
98		15	22.9306	PANEL PROVIDED		E			
99		15	22.9306	PANEL PROVIDED		E			
100		15	22.9306	PANEL PROVIDED		E			



SECT "A"-A"

TAB 01

TAB 02

REV	DATE	BY	CHK	DATE	CHANGES
F.2	08				ADD 2x 12.53 HOLES TO TAB 1 & 2 PARTS
F.1	08				ADD 2x 12.53 HOLES TO TAB 1 & 2 PARTS
E	08				TAB 02 HEIGHT WAS MISASSED RADIUS DIMENSIONS
D	08				ADDED .06 X .50 NOTCH 2 PLACES
D	08				M3 HOLES WERE H2. 429.00 DR1 WAS 430.00
D	08				Added One Return Hole
C	08				Reduced # of M3 holes
B	08				Added 1x M3
A	08				NEW B56 Block

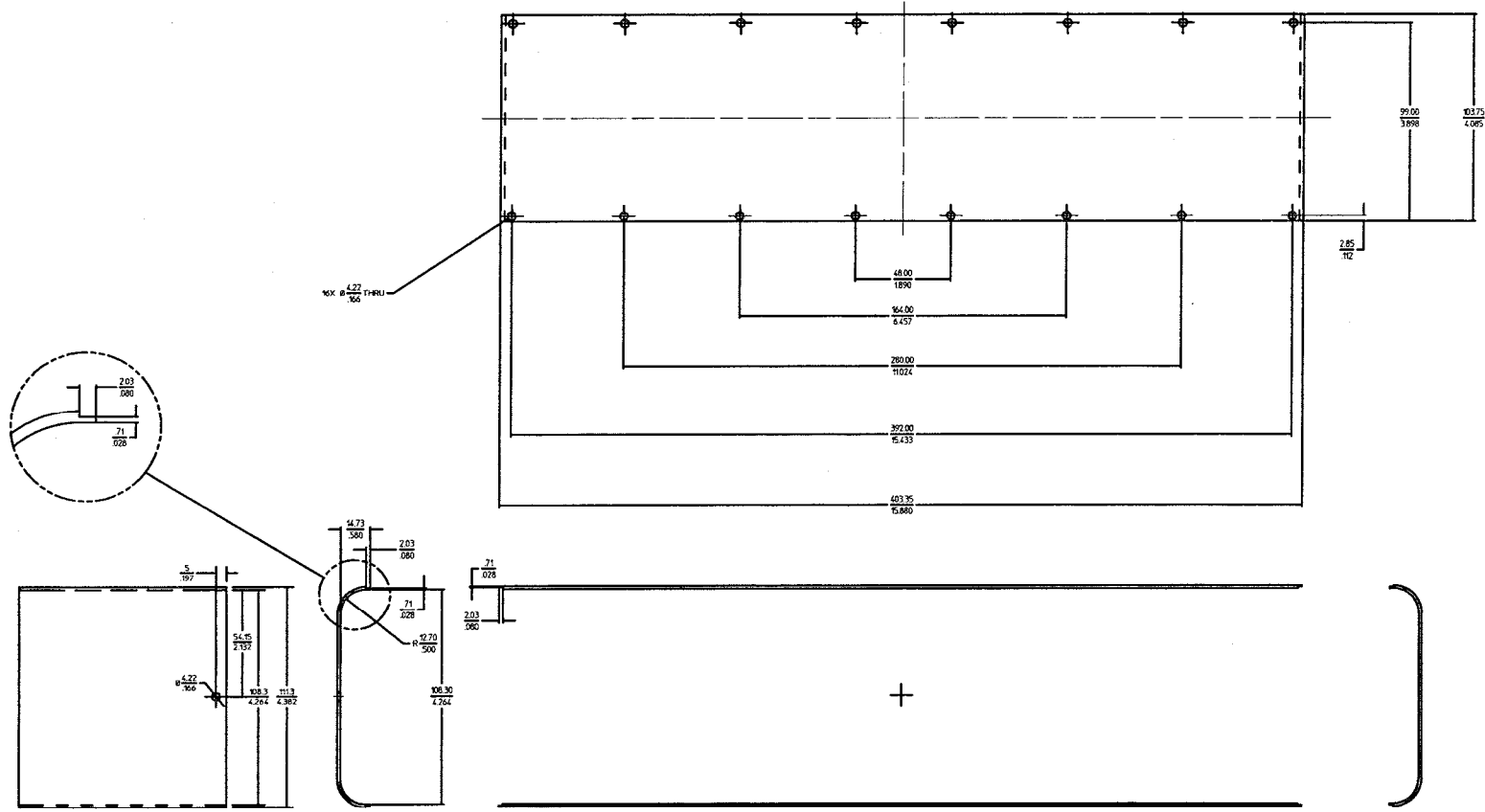
SHOP ORDERS	
DATE	08/00/00
BY	DESREANE
DESCRIPTION	TAB

APPROVALS	
BY	08/00/07
BY	08/00/07
BY	08/00/07
BY	08/00/07

ITEM	REV	PART NUMBER	DESCRIPTION
1	14	ZL6774C-1	ALUMINUM 6061-T6
2	14	ZL6774C-2	ALUMINUM 6061-T6

REV	DESCRIPTION	DATE
1	BARBAR DRAWING NUMBER	350-330-20
2	UNLESS OTHERWISE SPECIFIED	
3	LAWRENCE BERKELEY LABORATORY	
4	UNIVERSITY OF CALIFORNIA	
5	BERKELEY	
6	BARBAR DETECTOR	
7	BAR ASSEMBLY BOX	
8	FORWARD BB END FLANGES	
9	SCALE: NTS	00-00-00
10	DRAWING NUMBER	2216774
11	DATE	00-00-00

ITEM	REQ	PART NUMBER	DESCRIPTION
1	20	22L8764C-1	1/16" SSSL Sheet



REV.	DATE	BY	CHKD.	DESCRIPTION
A	80			4-88 Add .100" Thru hole Side Door

UNLESS OTHERWISE SPECIFIED		SHOP ORDERS	
ALL DIMENSIONS ARE	IN UNITS	ALL DIMENSIONS ARE	IN UNITS
IN UNITS	IN UNITS	IN UNITS	IN UNITS

LAWRENCE BERKELEY LABORATORY		UNIVERSITY OF CALIFORNIA - BERKELEY	
PEP II DETECTOR PD		DRC BARBOX PRODUCTION	
MEDGE COVER I		SCALE: NTS	
FORM NO.	DATE	REV.	DATE
000000	00-00-00	22L9584	A

4-14-88 SD