

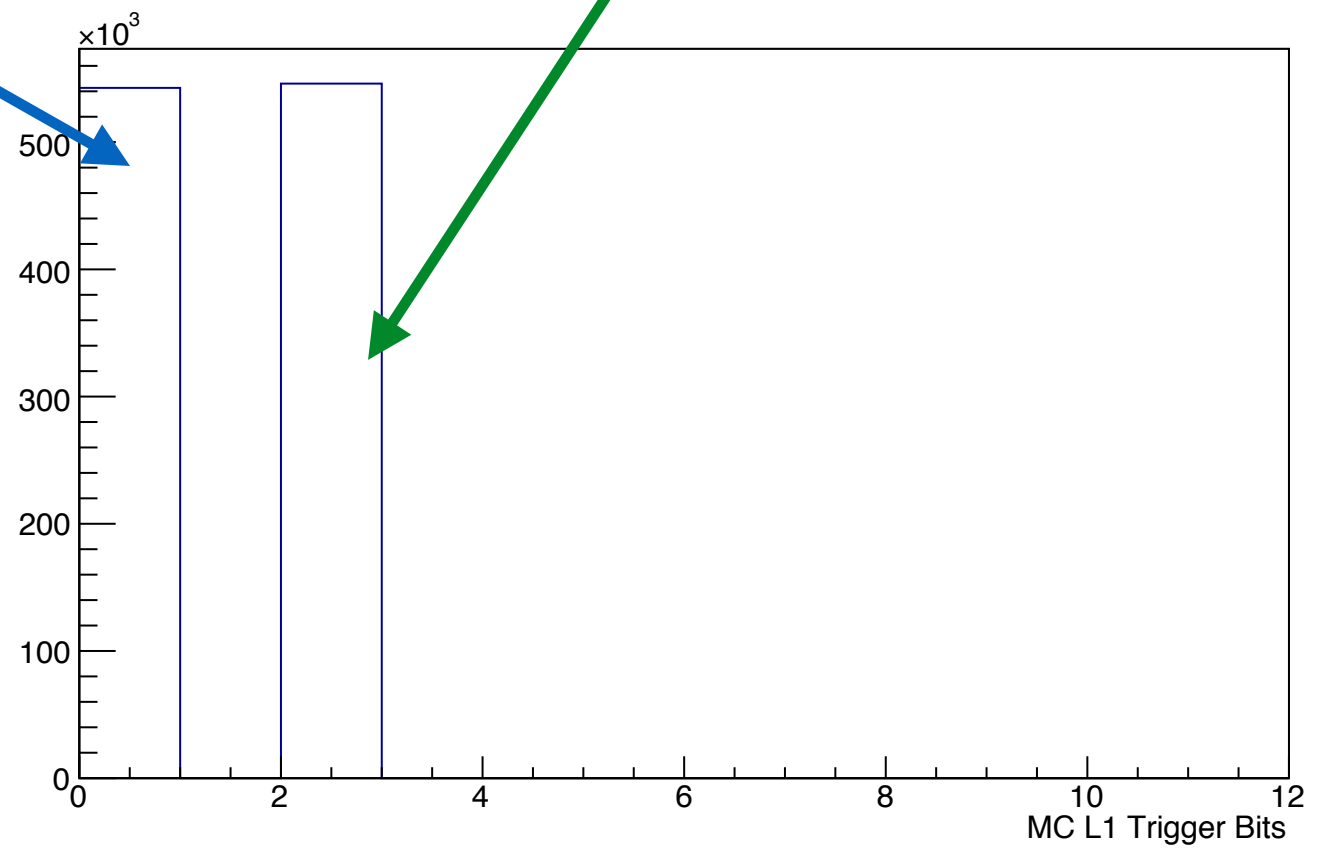
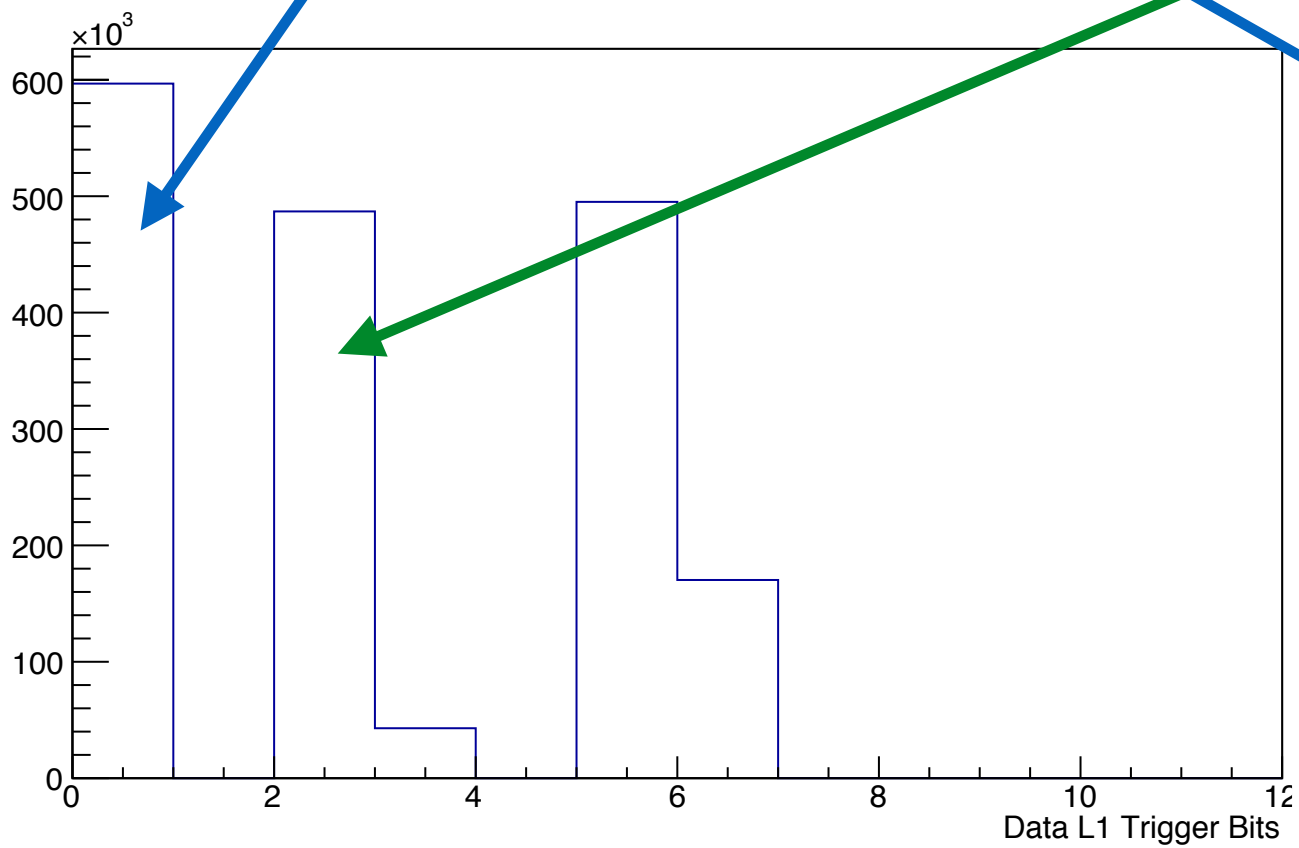
Trigger Simulation Studies

- Checking the “version 0” of the trigger simulation
 - “Physics” FCAL/BCAL and BCAL-only triggers implemented. Check how they perform in data.
 - Current status all checked in to mcsmear dev branch
 - N.B. several improvements in pipeline
- Runs studied:
 - 2016 — 11553
 - 2017 lo-rate — 30590
 - 2017 hi-rate — 31001

2016 Data — Run 11553

“Physics” Trigger

BCAL-only Trigger



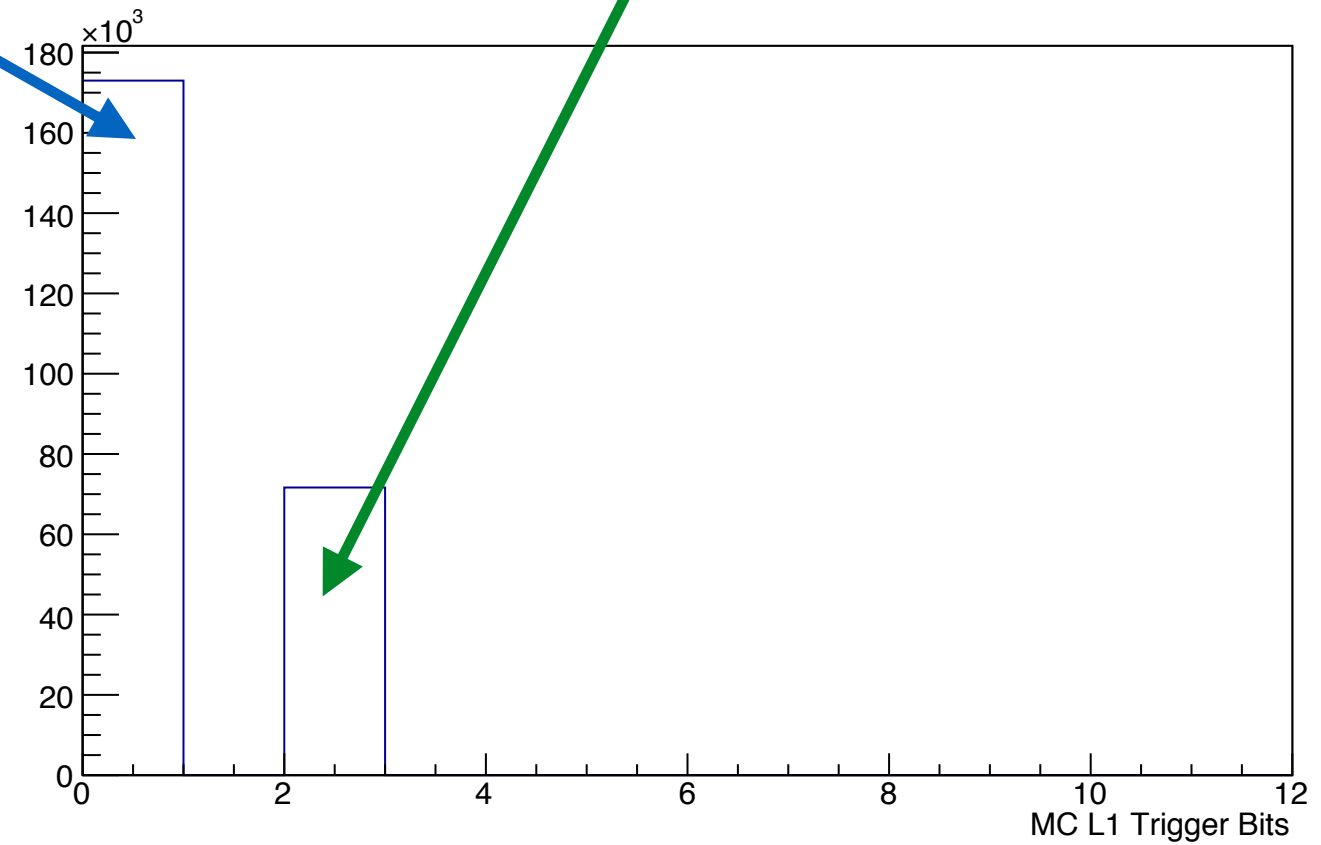
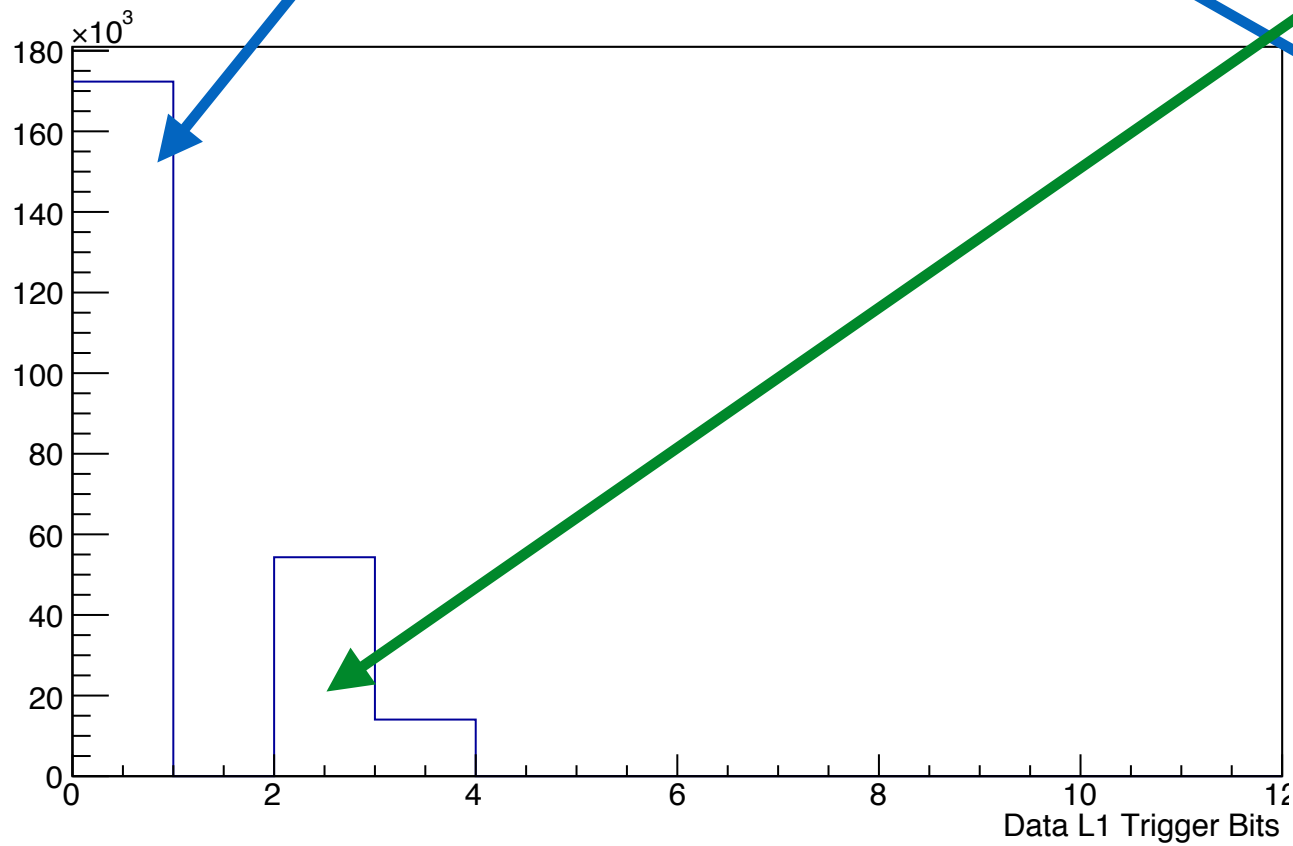
Triggers in Data

Emulated Triggers

2017 Data — Run 30590

“Physics” Trigger

BCAL-only Trigger



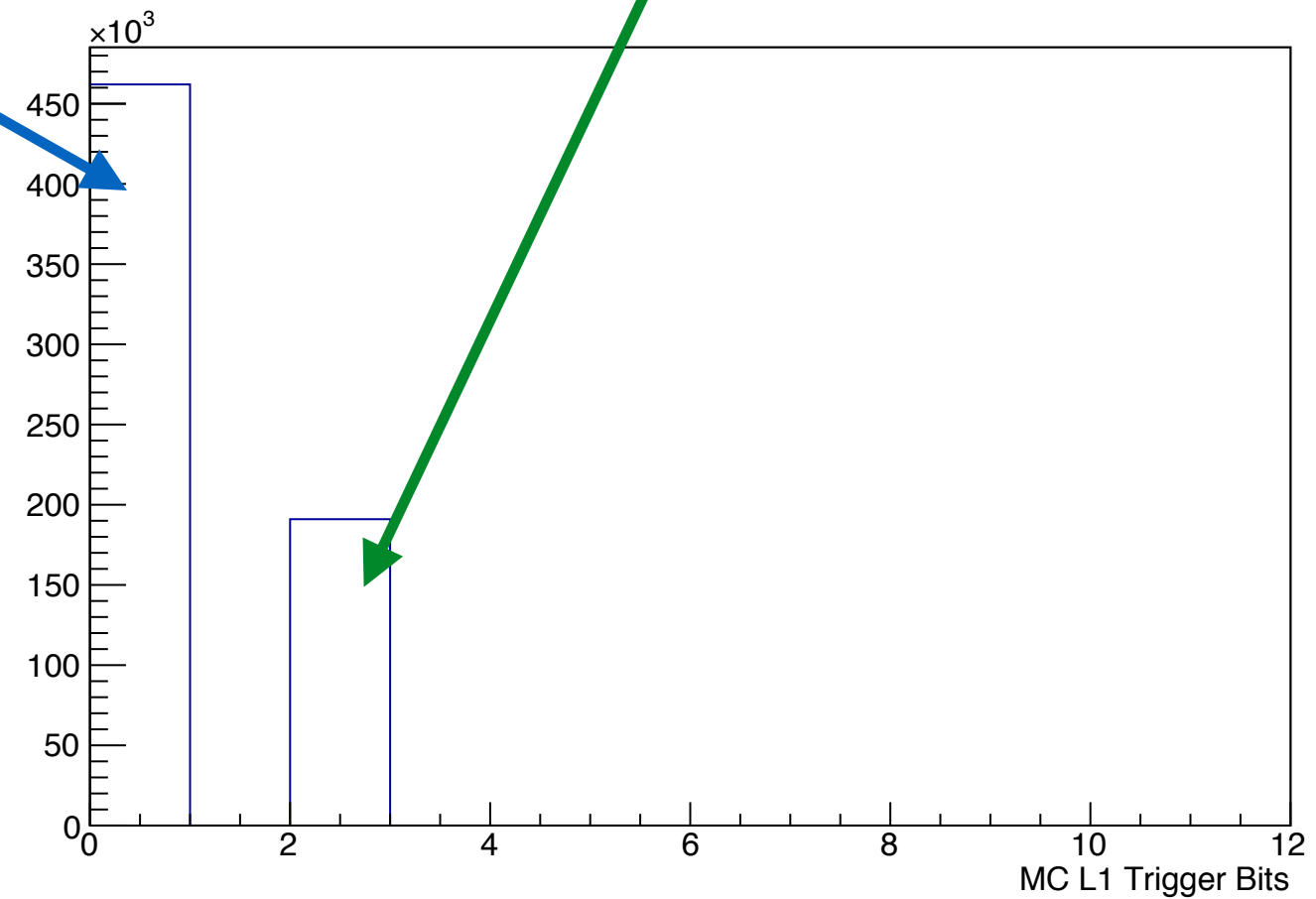
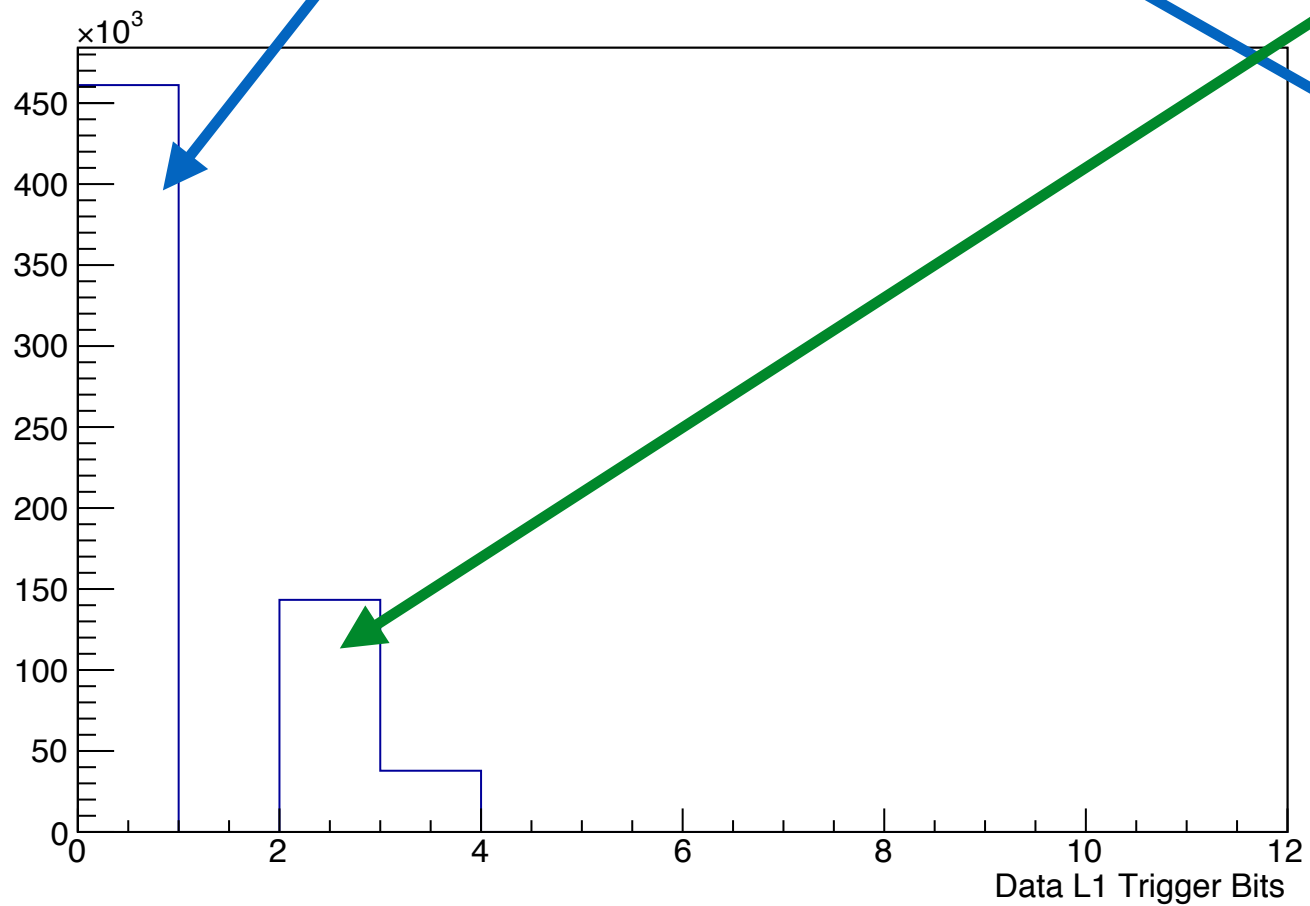
Triggers in Data

Emulated Triggers

2017 Data — Run 31001

“Physics” Trigger

BCAL-only Trigger

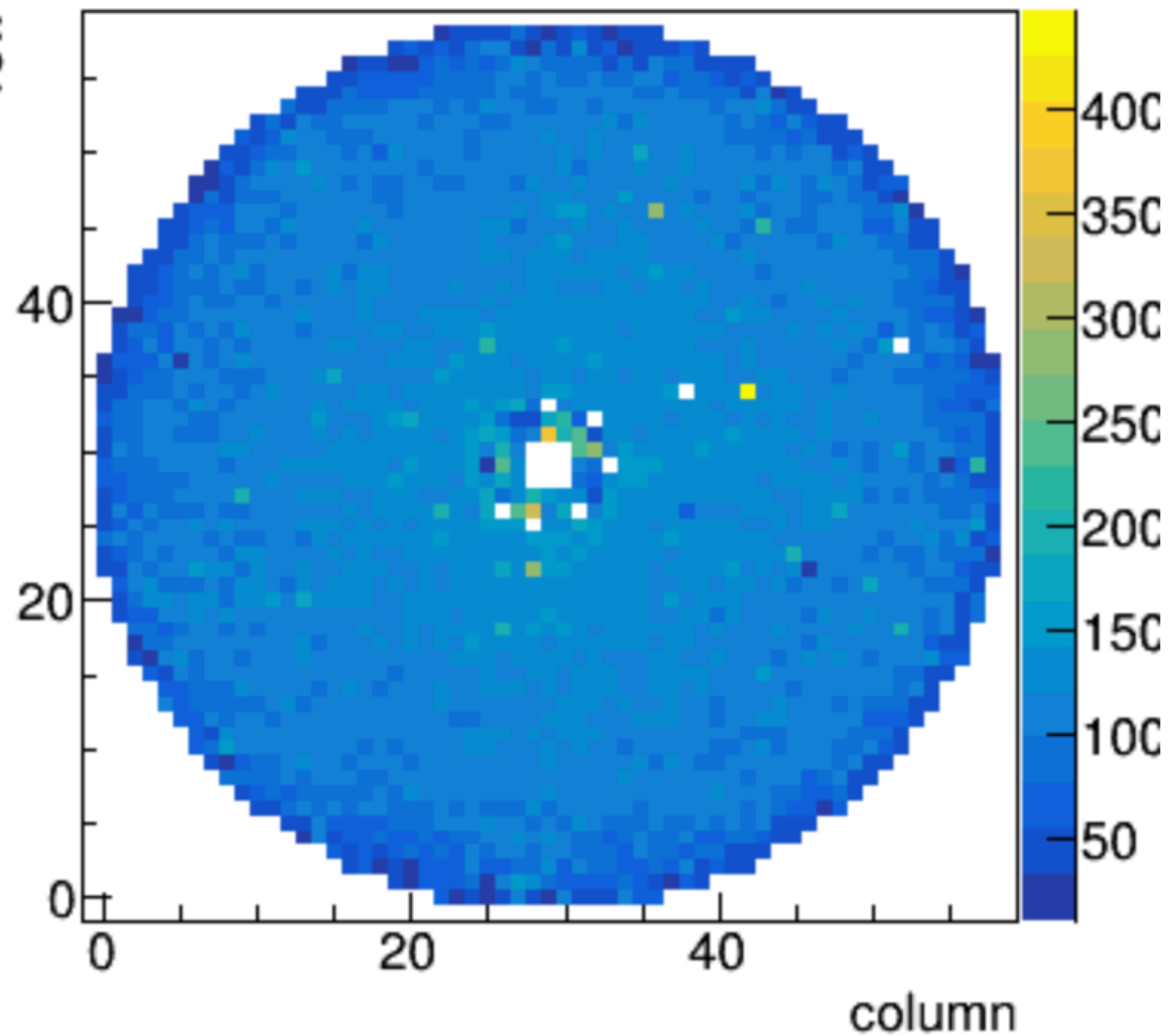


Triggers in Data

Emulated Triggers

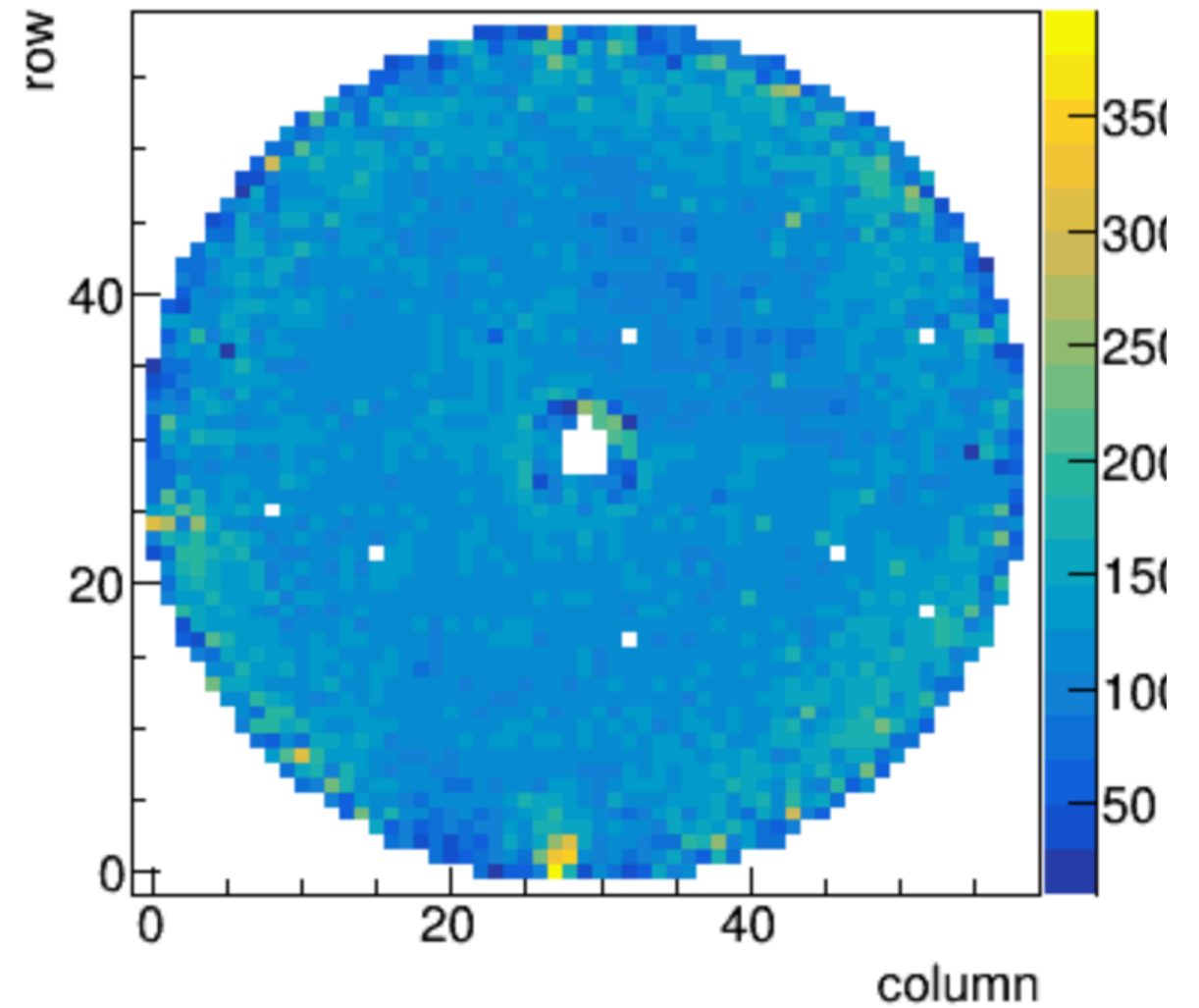
FCAL Average Hit Energy

FCAL Hit Average Energy [MeV]



2017 Lo-Rate (run 30590)

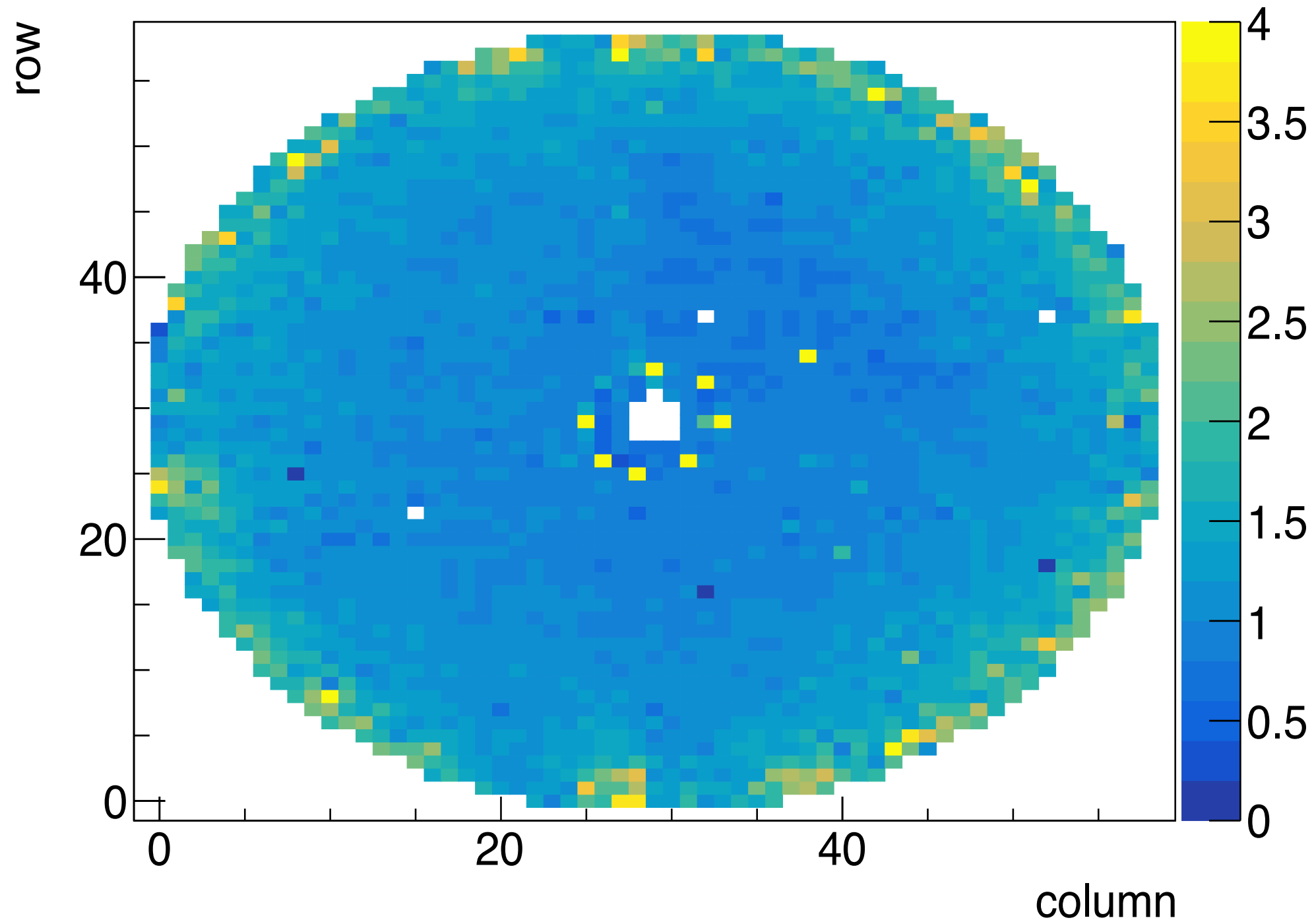
FCAL Hit Average Energy [MeV]



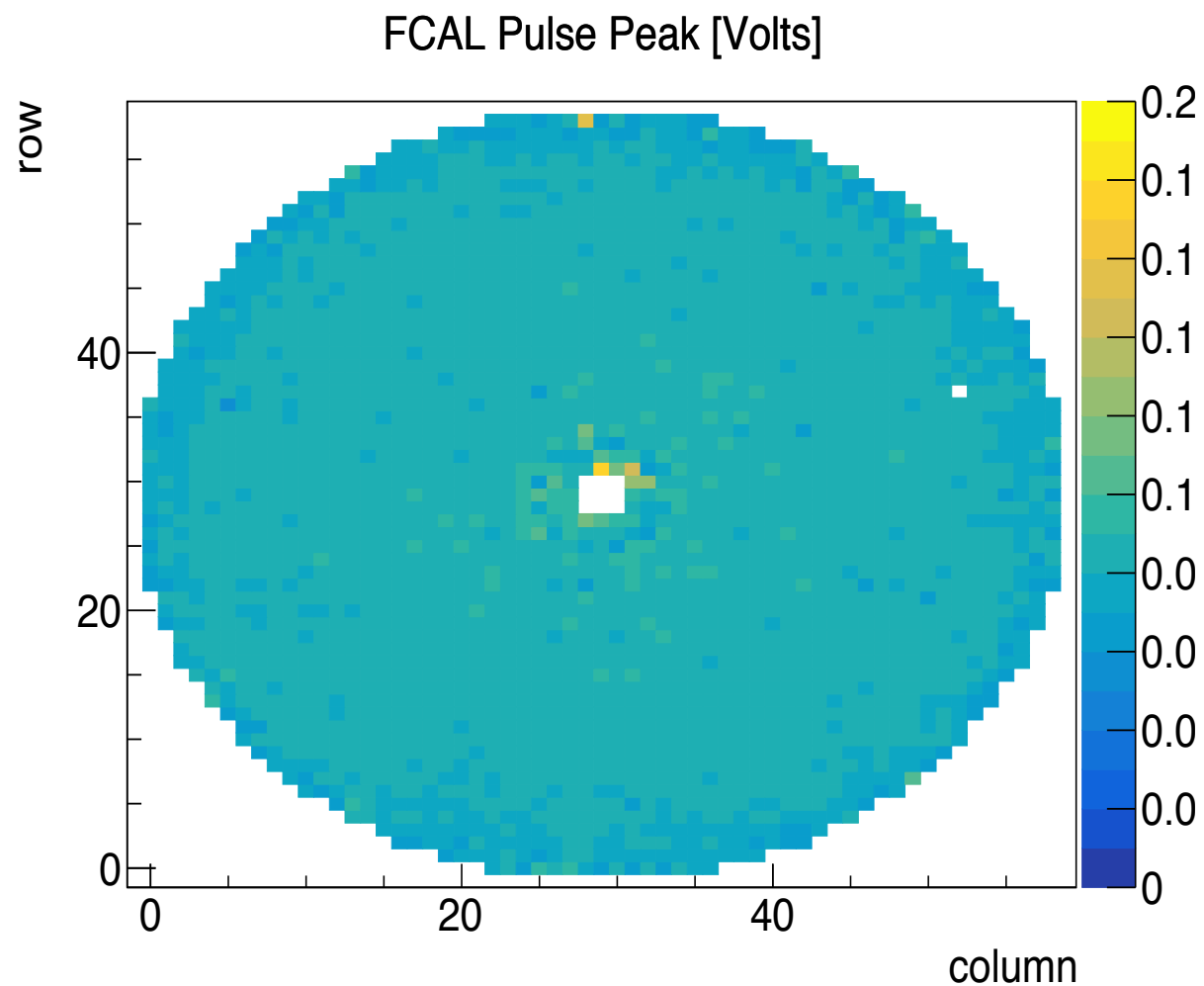
2017 Hi-rate (run 31001)

FCAL — Hit Energy Ratio (Hi/Lo)

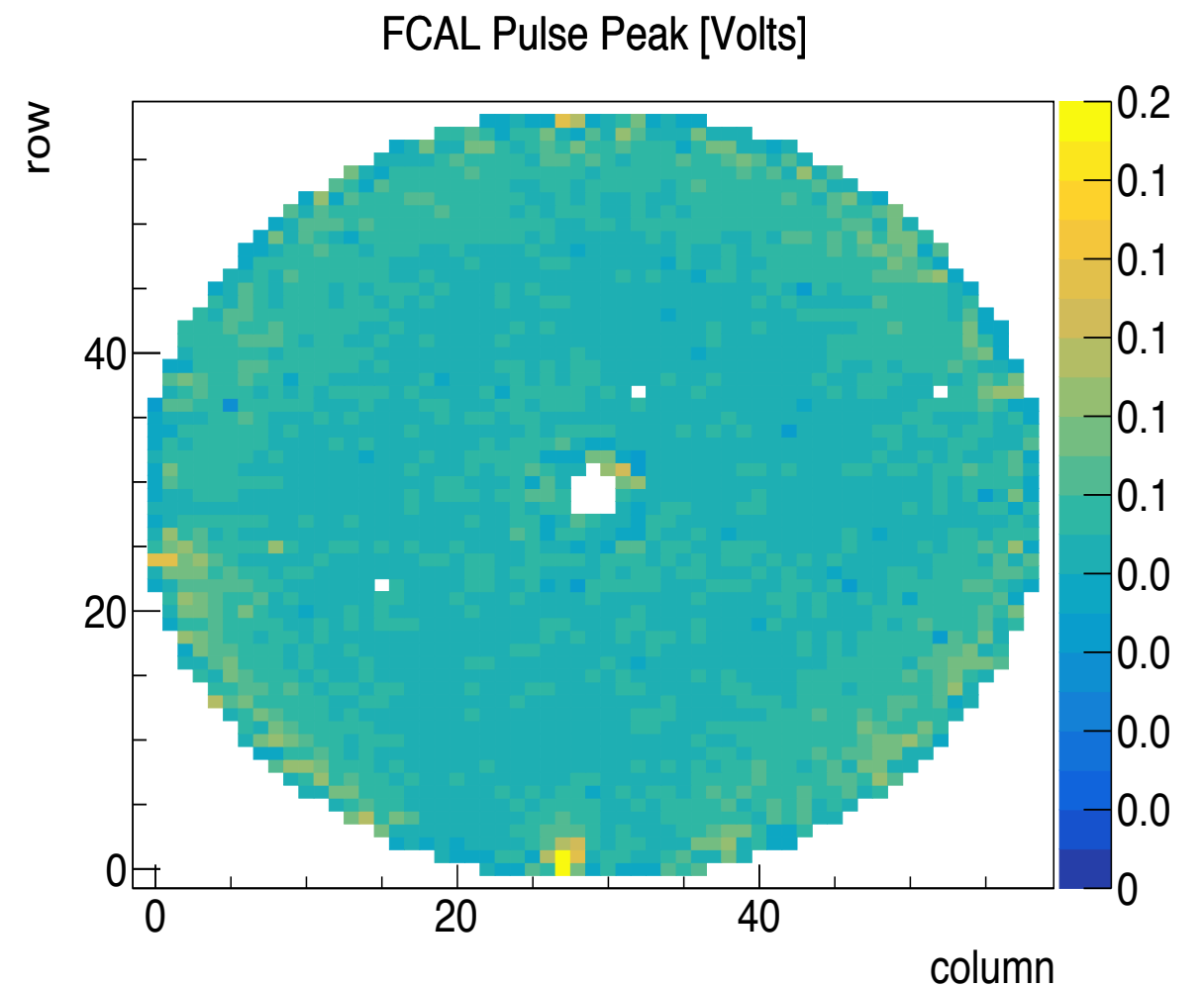
FCAL Hit Average Energy [MeV]



FCAL Average Pulse Peak

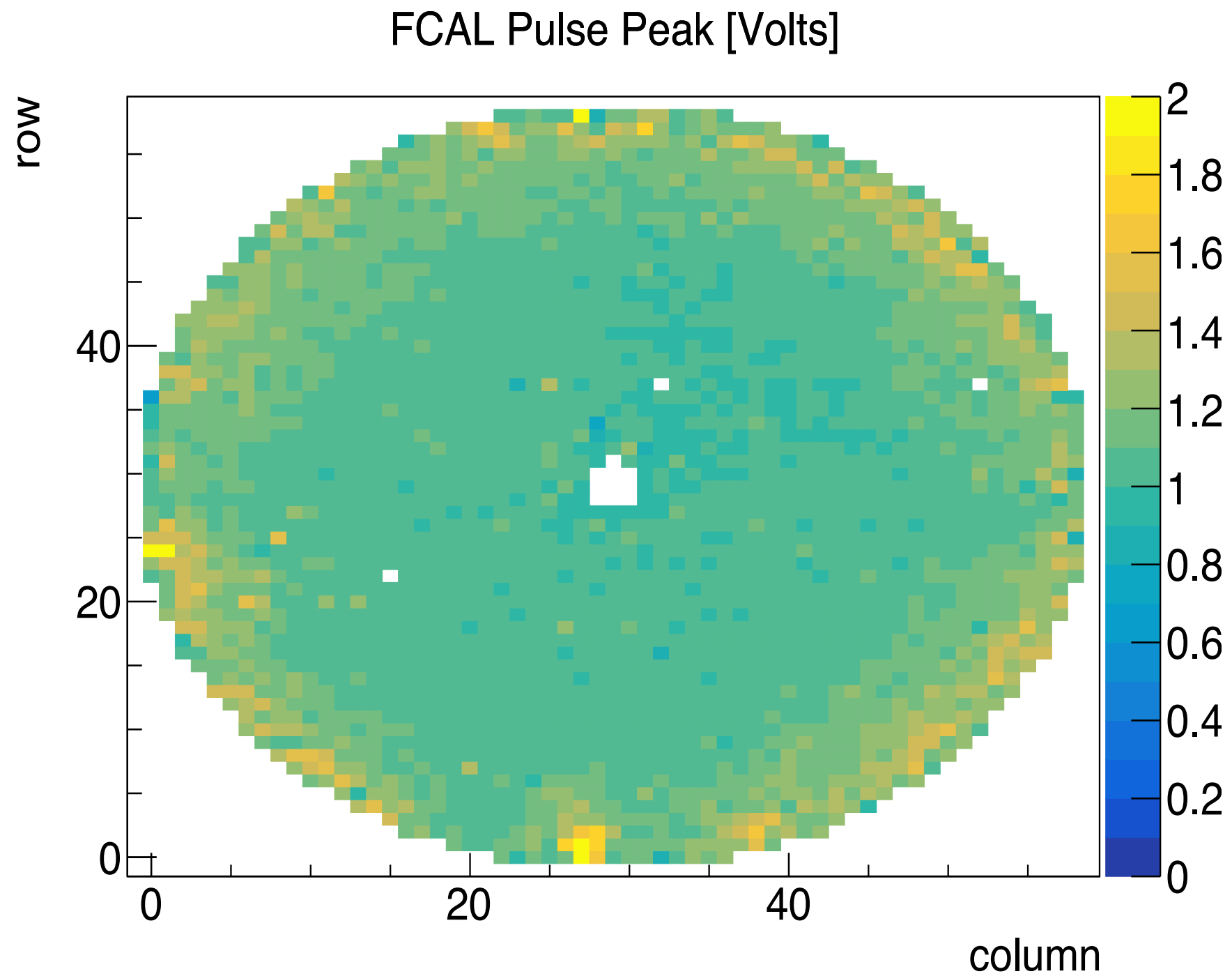


2017 Lo-Rate (run 30590)



2017 Hi-rate (run 31001)

FCAL — Pulse Peak Ratio (Hi/Lo)



FCAL — Hit Energy Ratio / Pulse Peak Ratio

