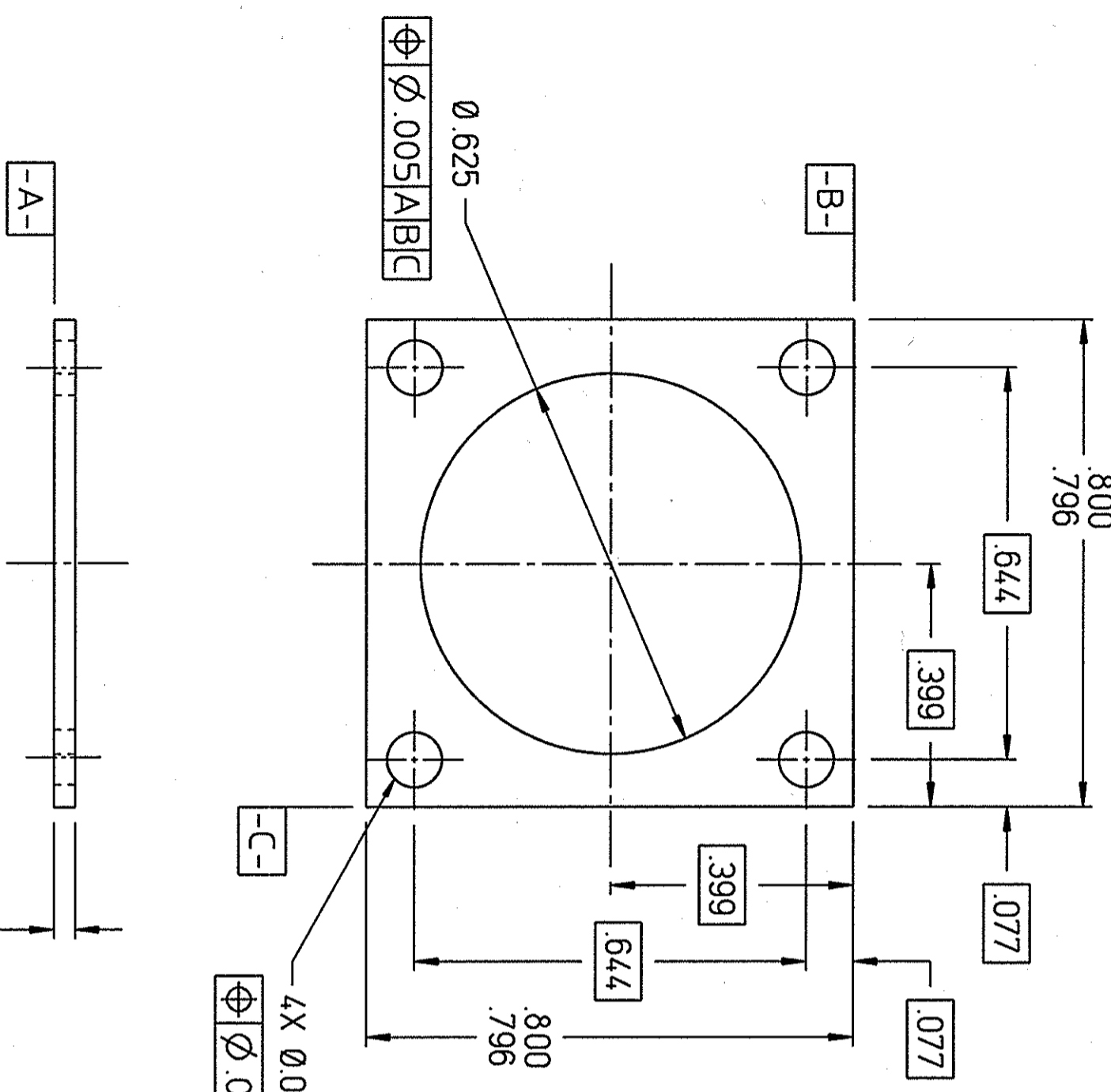


REVISIONS				
ZONE	REV.	DESCRIPTION	DATE	APPROVED
ALL	A	CHGD DIMS .800/.796 (WAS .803/.800) .399 (WAS .402).077 (WAS .079) MRZ 2/26/02	3/12/02	D. KASHY
ALL	B	REMOVED PROTOTYPE-1 FROM TITLE MRZ 7/26/02	8/5/02	DKF



4X Ø.0094 THRU
Ø.005 A|B|C



DIM & TOL. PER ASME Y14.5 UNLESS OTHERWISE SPECIFIED DIMENSIONS ARE IN INCHES TOLERANCES ARE: FRACTIONS DECIMAL ANGLES ± N/A XX ± N/A ± N/A XXX ± .005		CADD ID. NO. /WBS/6/zorecky/66000 /3400/6813003504_revB		Thomas Jefferson National Accelerator Facility UNITED STATES DEPARTMENT OF ENERGY PRIMEX HYCAL	
MATERIAL GLASS EPOXY LAMINATED SHEET NEMA GRADE G10		APPROVALS DRAWN M. ZARECKY CHECKED D. KASHY		DATE 11/12/01 11/26/01	
FINISH N/A UNLESS OTHERWISE NOTED		APPROVED D. KASHY APPROVED D. KASHY		SIZE/DWG. NO. B 66813-B-03504	
DEBURR & BREAK ALL SHARP EDGES		APPROVED D. KASHY		SCALE 4X USED ON ASSY NO. 66813-D-03500 SHEET 1 OF 1	
DO NOT SCALE DRAWING					

LEAD/TUNGSTATE CRYSTAL COUNTER
PMT CAPTURE PLATE