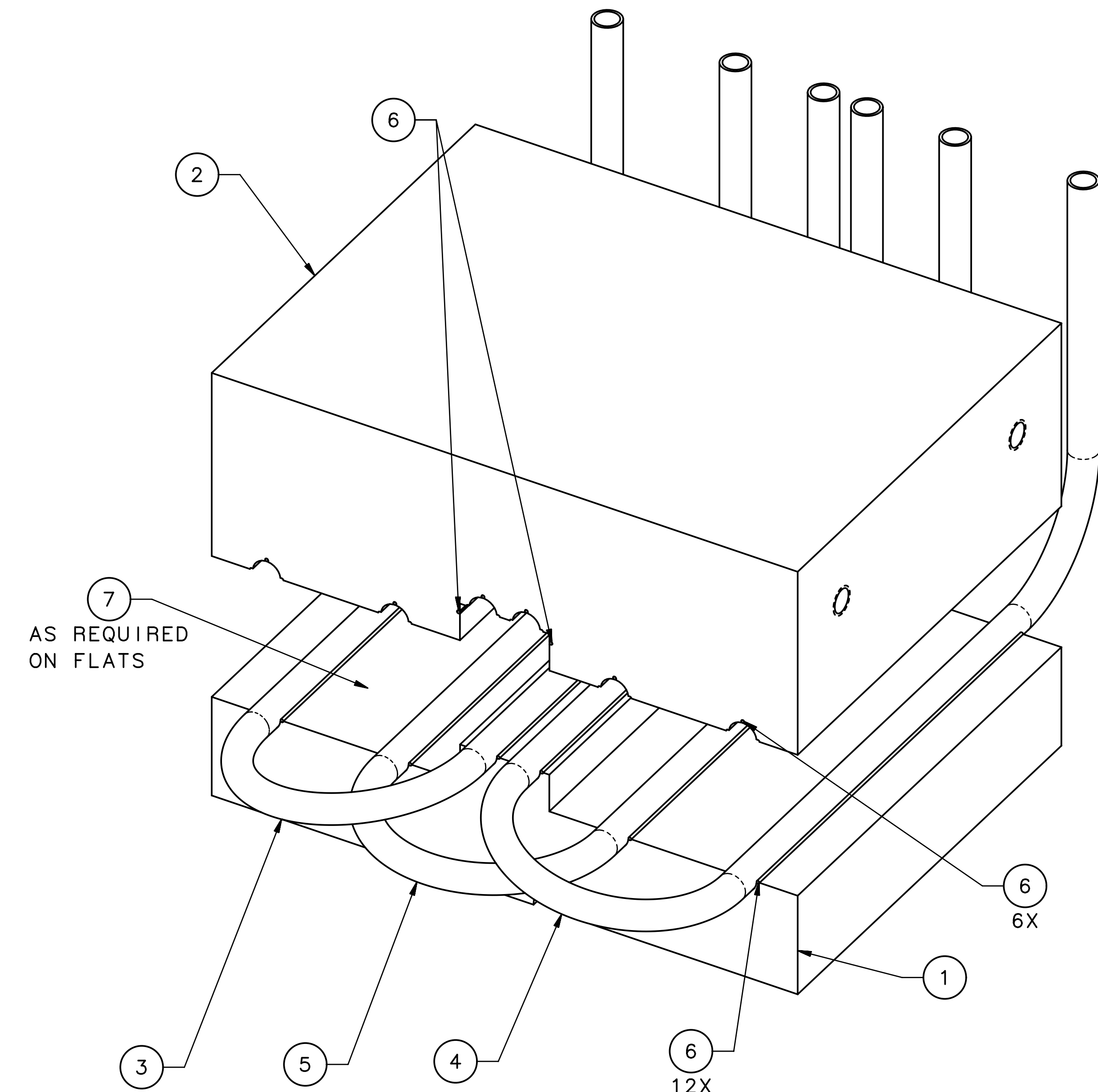
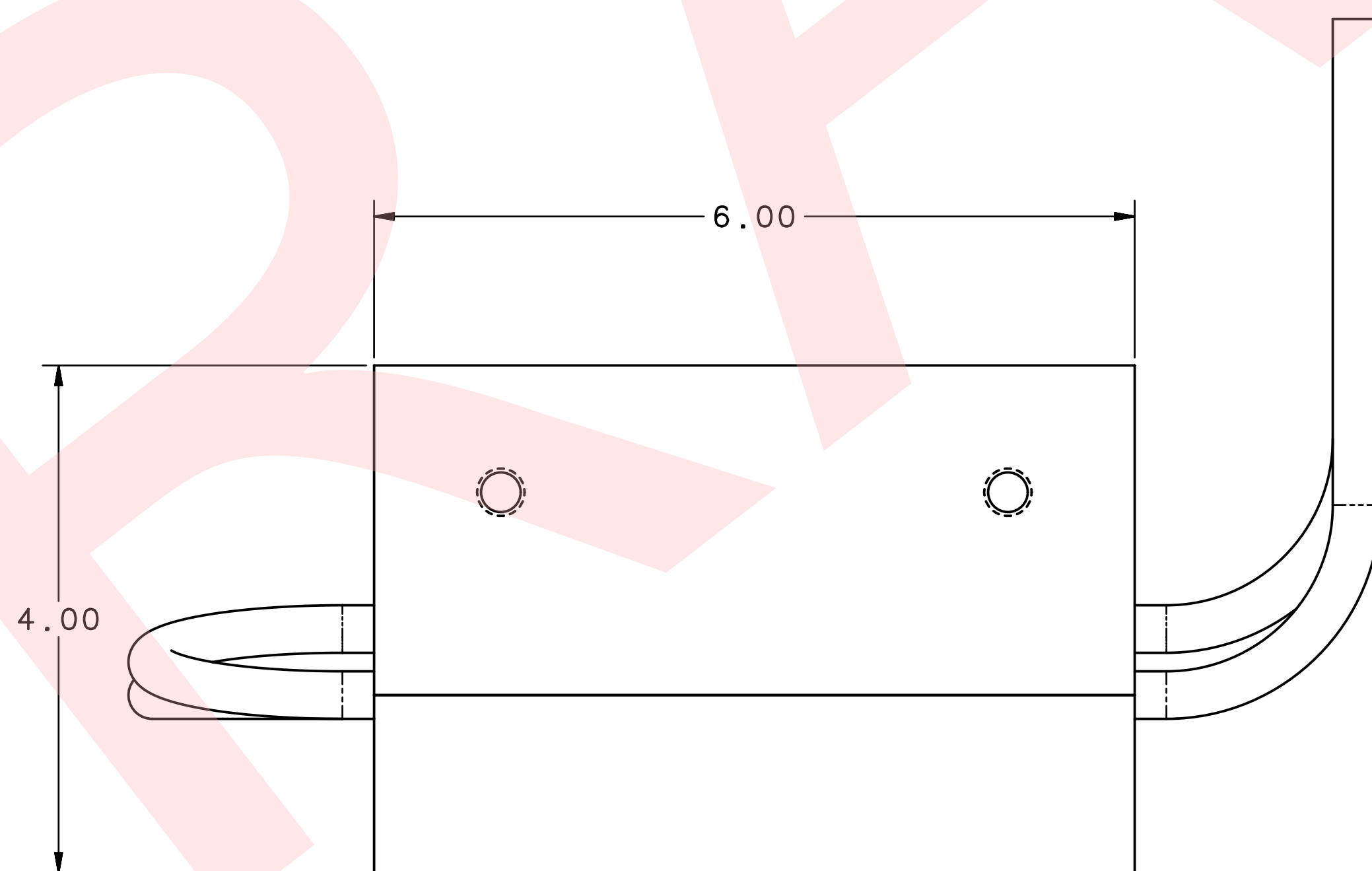
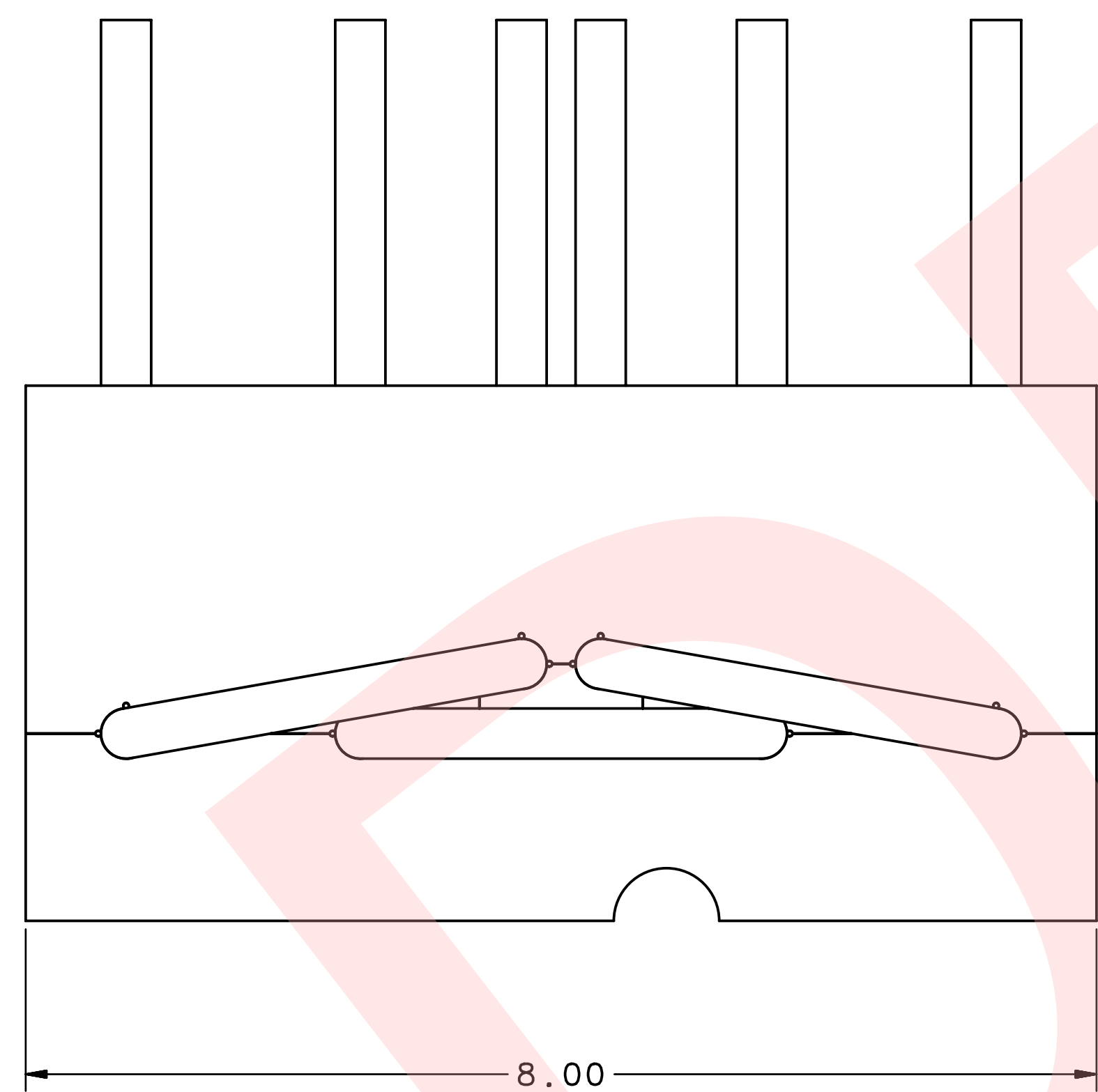
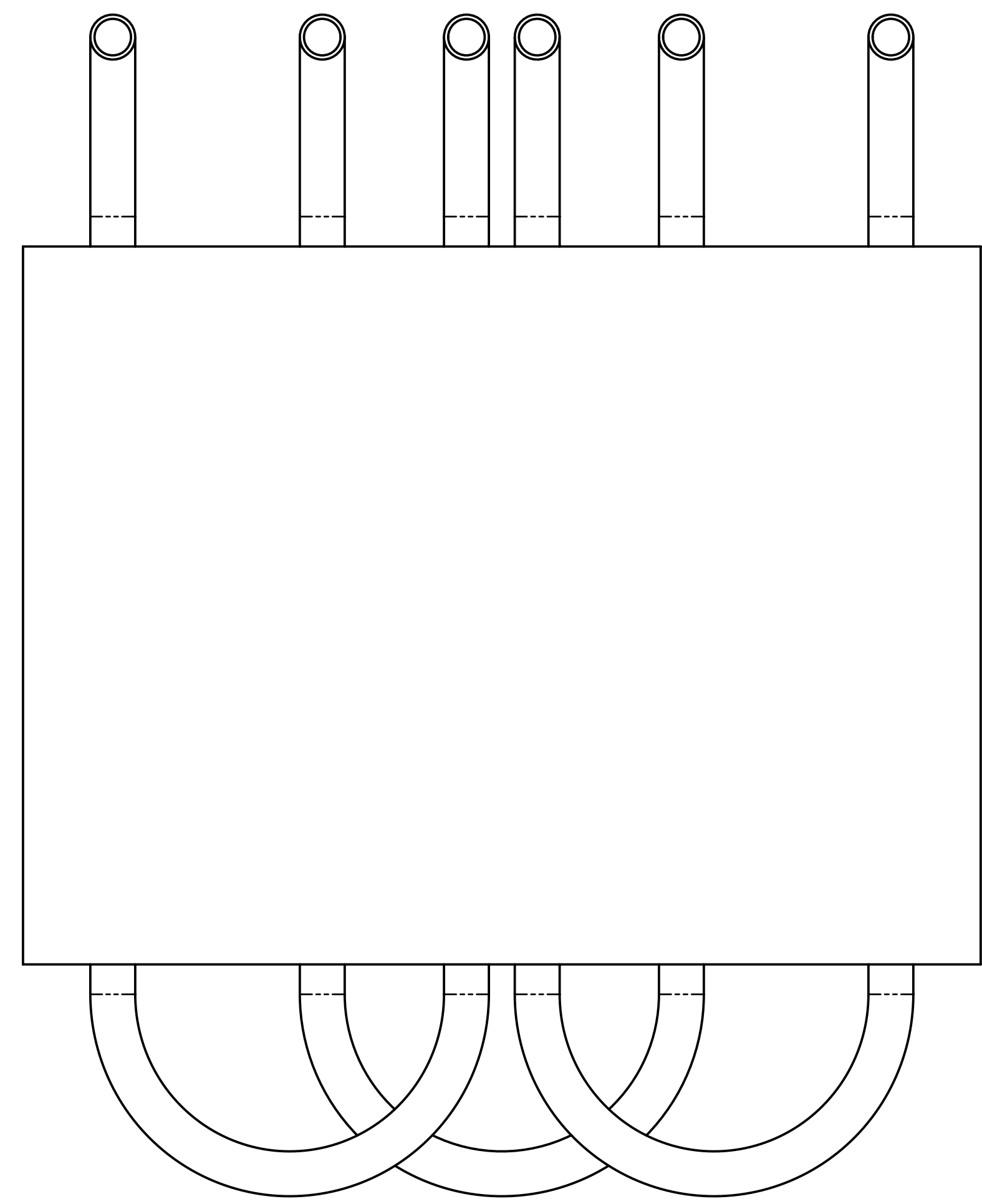


REVISION HISTORY		
ZONE	REV	DESCRIPTION



QTY	ITEM	PART OR	NOMENCLATURE	MATERIAL	NOTES
REQD	NO.	IDENTIFYING NO.	OR DESCRIPTION	SPECIFICATION	
AR	7	-	BRAZING FOIL, .002 THK	CuSiI	-
20	6	-	BRAZING WIRE, .041 DIA.	CuSiI	-
1	5	D00001-13-18-2005	TRIAL TUBING 3	COPPER OFHC	-
1	4	D00001-13-18-2004	TRIAL TUBING 2	COPPER OFHC	-
1	3	D00001-13-18-2003	TRIAL TUBING 1	COPPER OFHC	-
1	2	D00001-13-18-2002	BRAZING TRIAL, ABSORBER, CAP	COPPER OFHC	-
1	1	D00001-13-18-2001	BRAZING TRIAL, ABSORBER	COPPER OFHC	-

EACH SHEET OF MULTI-SHEET DRAWINGS SHALL ALWAYS HAVE THE SAME REVISION LEVEL.  
 DIM & TOL PER ASME Y14.5 2009. UNLESS OTHERWISE SPECIFIED DIMENSIONS ARE IN INCHES.  
 TOLERANCES ARE:  
 FRACTIONS: X ± .01 ANGLES: ± .50°  
 DECIMAL: XX ± .01  
 DECIMAL: XXX ± .005  
 FINISH: MACHINED SURFACES UNLESS NOTED DEBURR & BREAK ALL SHARP EDGES  
 THIRD ANGLE PROJECTION  
 DO NOT SCALE DRAWING  
 DRAWN: K. HARDING DATE: 24 APR 24  
 SCALE: 1:1  
 SHEET: 1 OF 1

United States Department of Energy  
**Jefferson Lab**  
 Thomas Jefferson National Accelerator Facility  
 Newport News, Virginia  
 HALL D - GLUEX KLONG  
 COMPACT PHOTON SOURCE  
 BRAZE TRIAL ASSEMBLY, ABSORBER  
 SIZE: DWG. NO. D00001-13-18-1001  
 REV. -