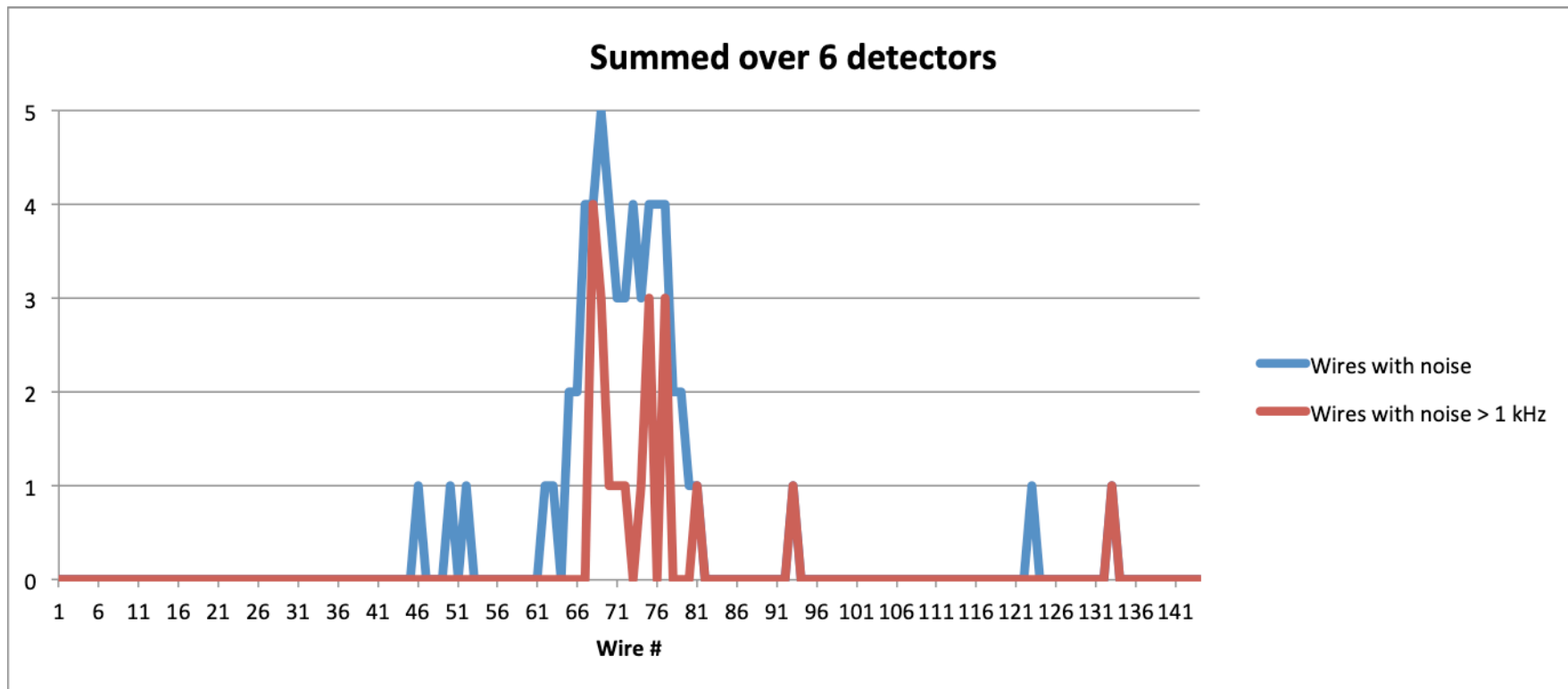


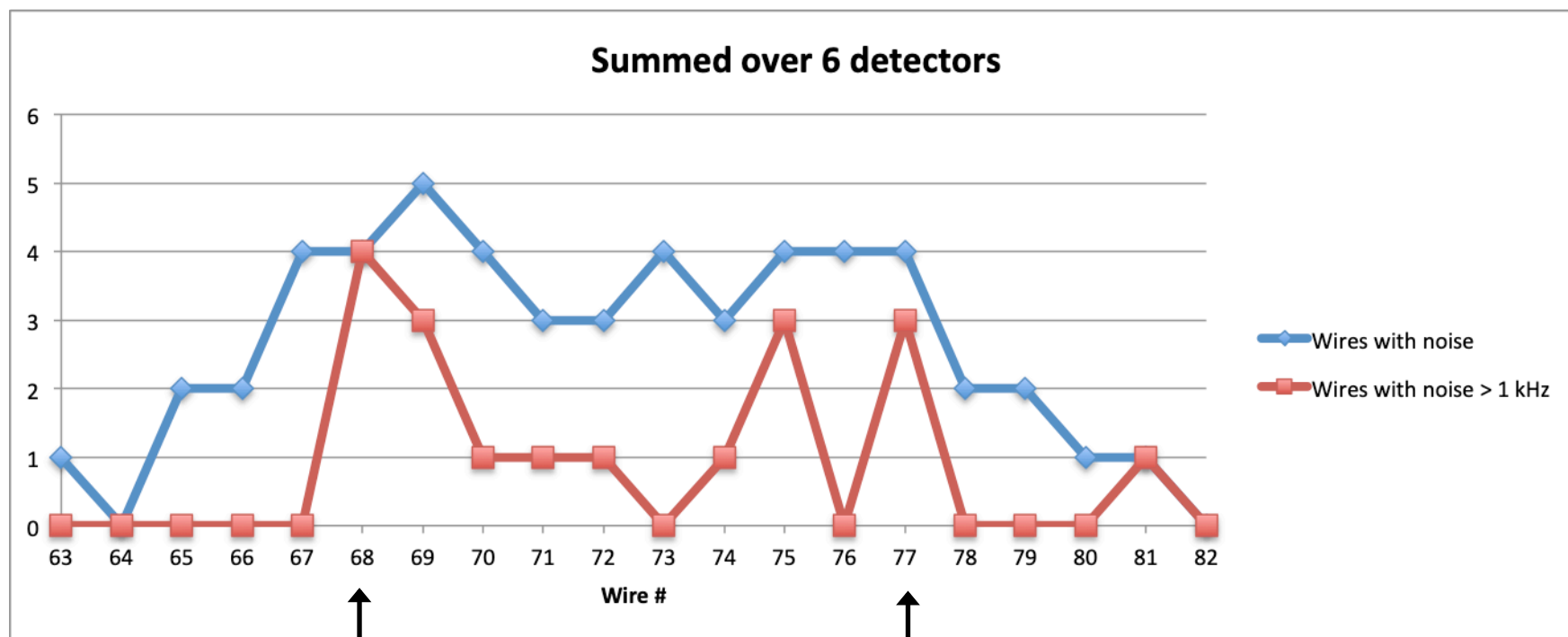
MWPCs for CPP Update

- Assembled and tested 7 detectors
- Tested chambers with 90:10 mixture by volume of Argon:CO₂ at +1800 V, corresponding to an approximate gain of 10⁵

Wires with avalanche discharge



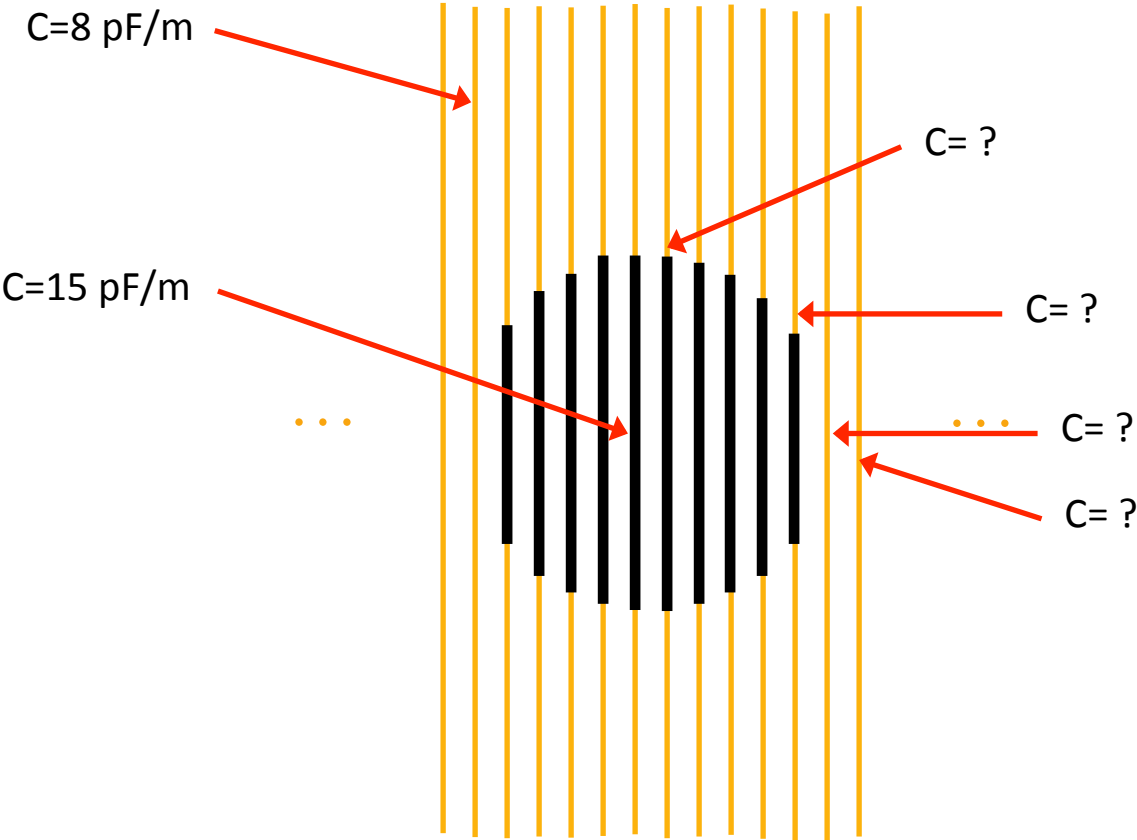
Wires with avalanche discharge



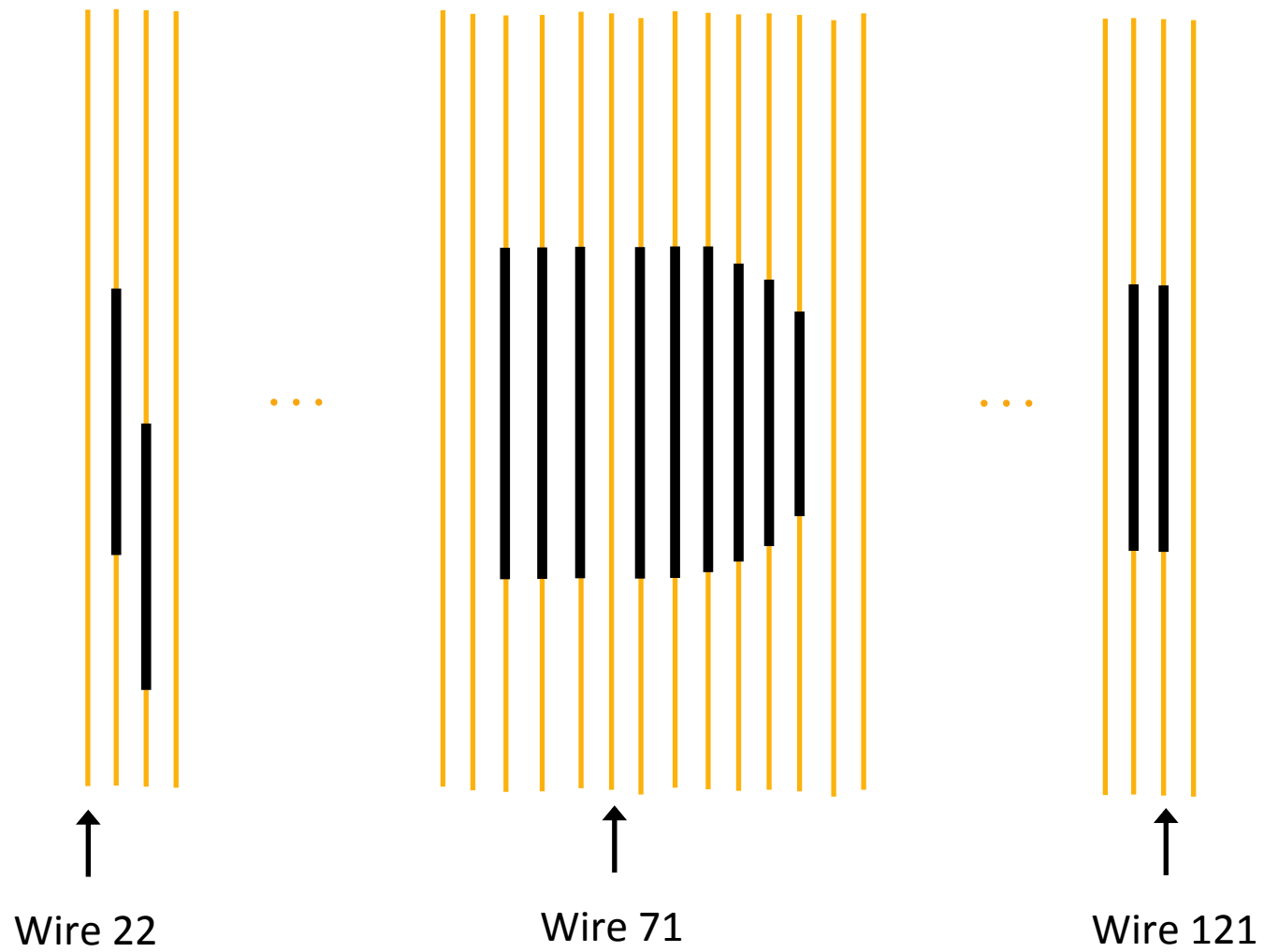
First carbon tube

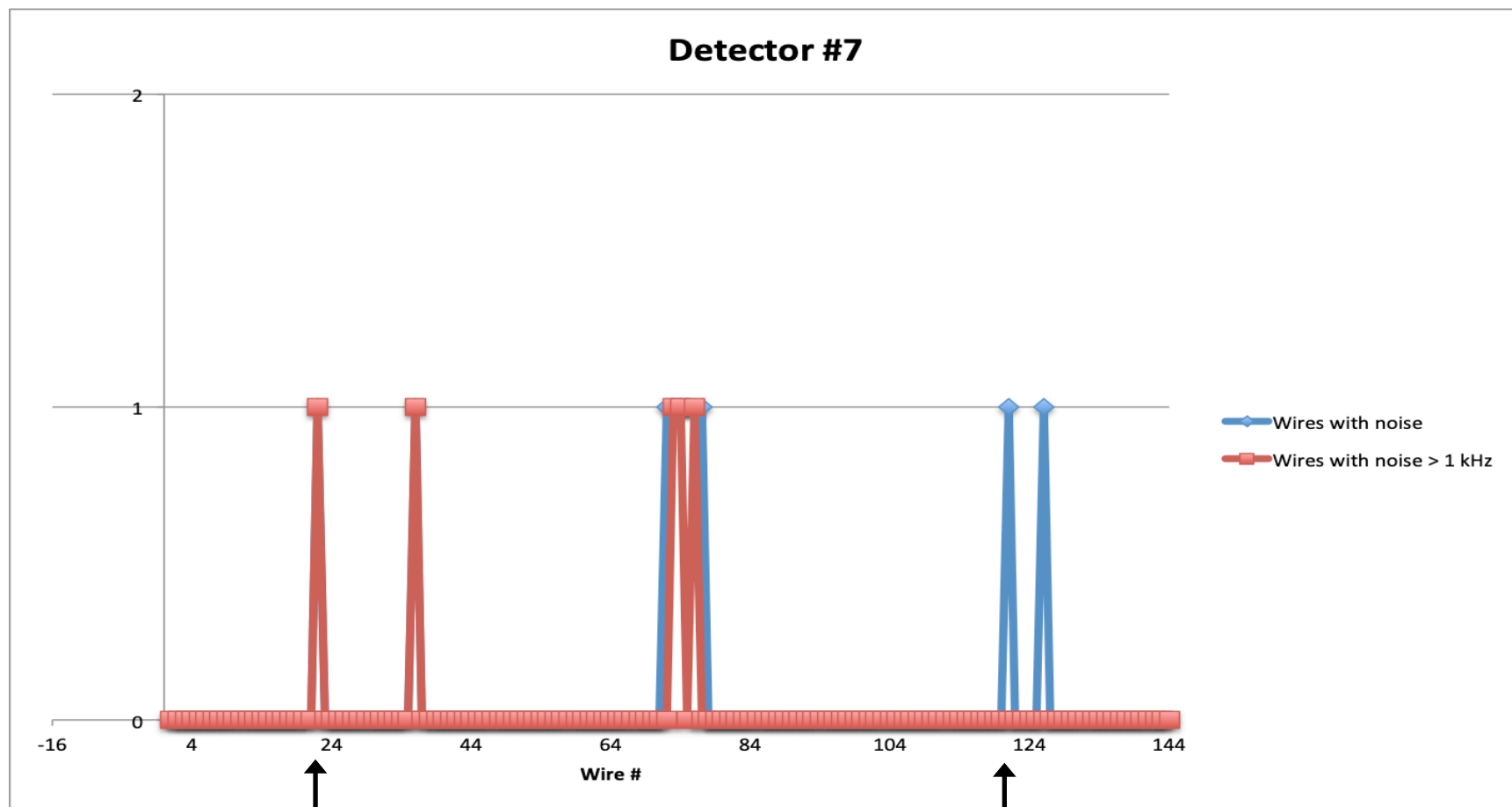
Last carbon tube

Carbon tube layout in detectors 1 to 6 (field wires not shown)



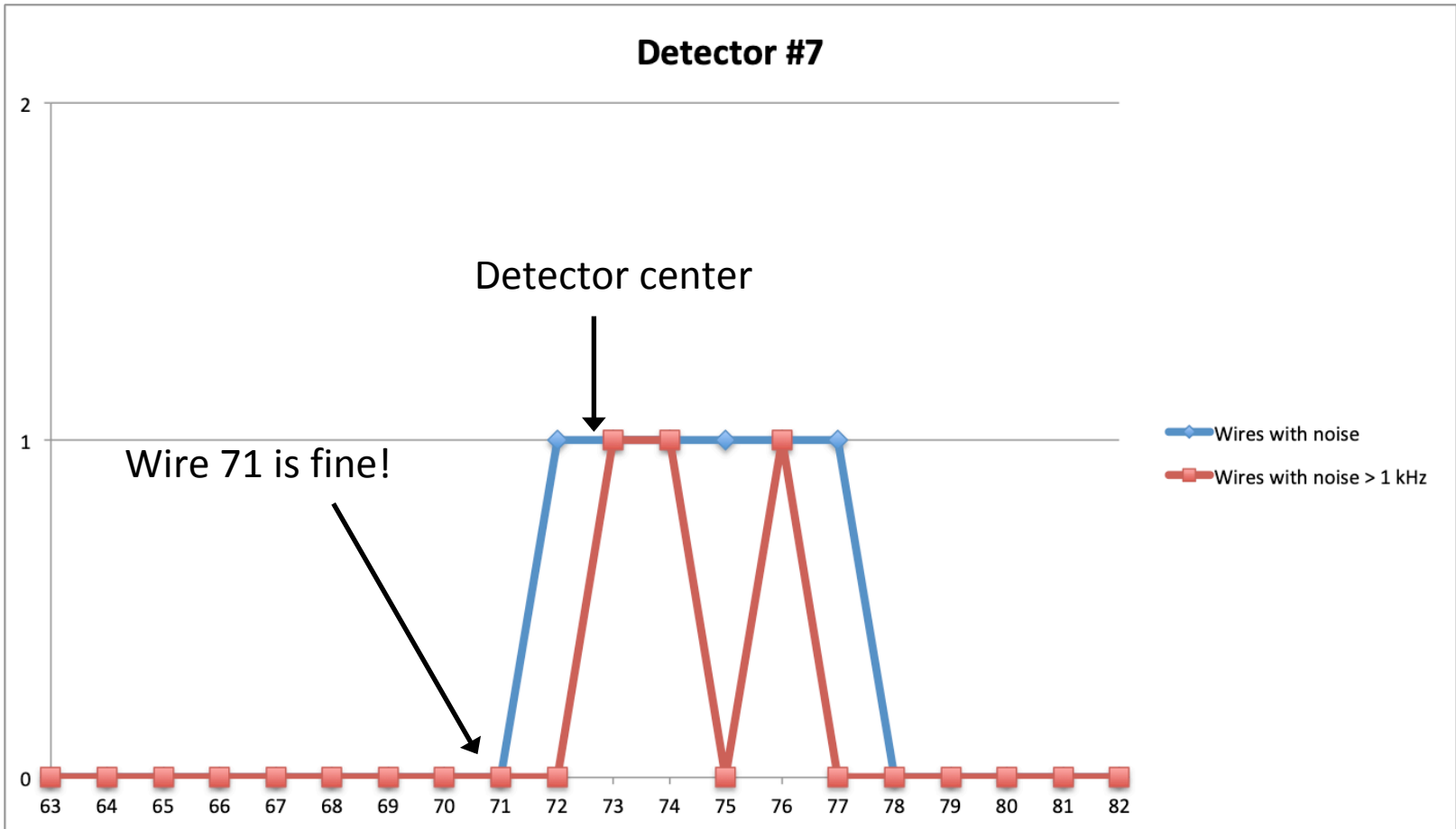
Carbon tube layout in detector #7 (field wires not shown)





Wire 22

Wire 121



First equal
length
carbon tube

Last non-
equal length
carbon tube

Is there an issue with how the carbon tubes are bonded to the wires?

