

Configuration Database

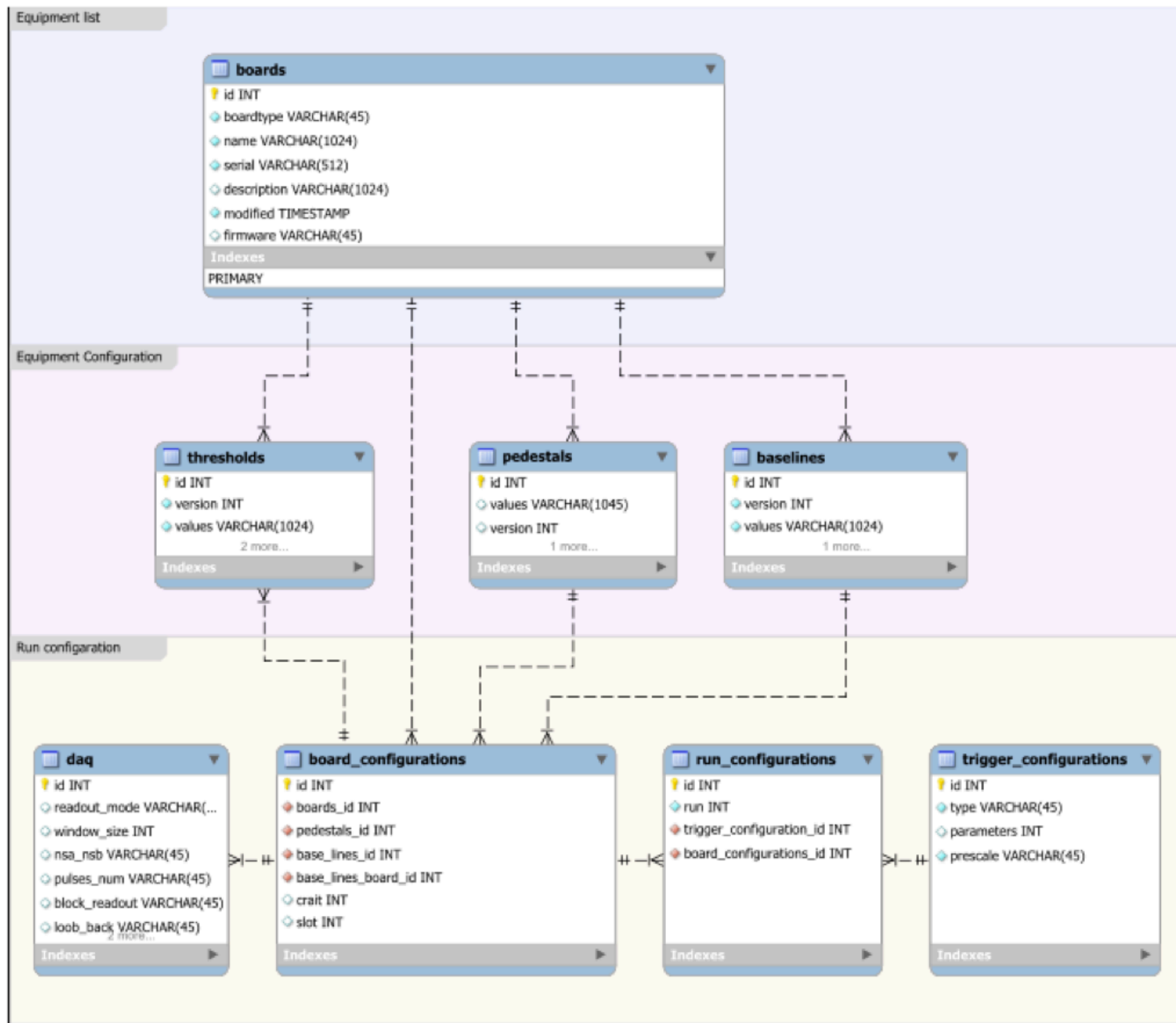
David Lawrence JLab
Jan. 18, 2012

Original design of configuration DB by Alex Somov,
Dmitry Romanov, and Vardan Gurjyan(?)

confdb will hold configuration parameters relevant to online. This includes mainly DAQ and trigger configurations, but may include run specific configurations for other online systems as well.

Original design documented in GlueX-doc-1872
and GlueX-doc-1882

From GlueX-doc-1872

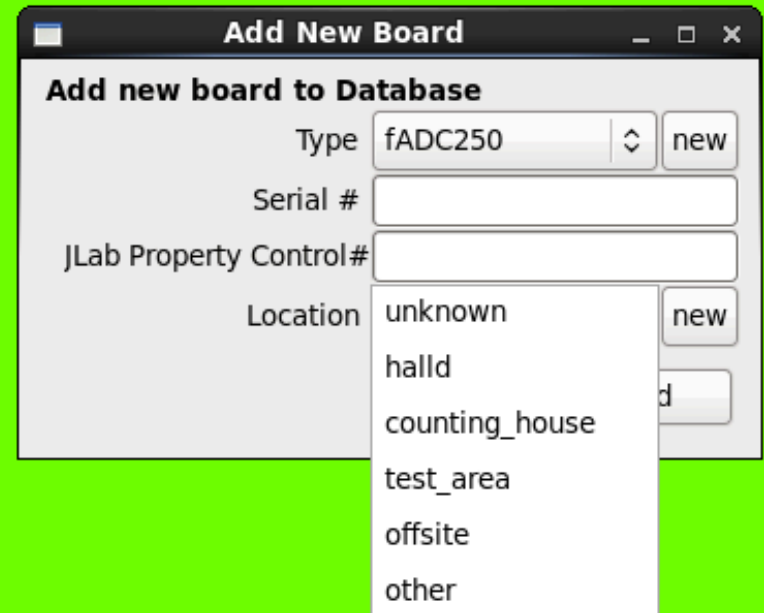
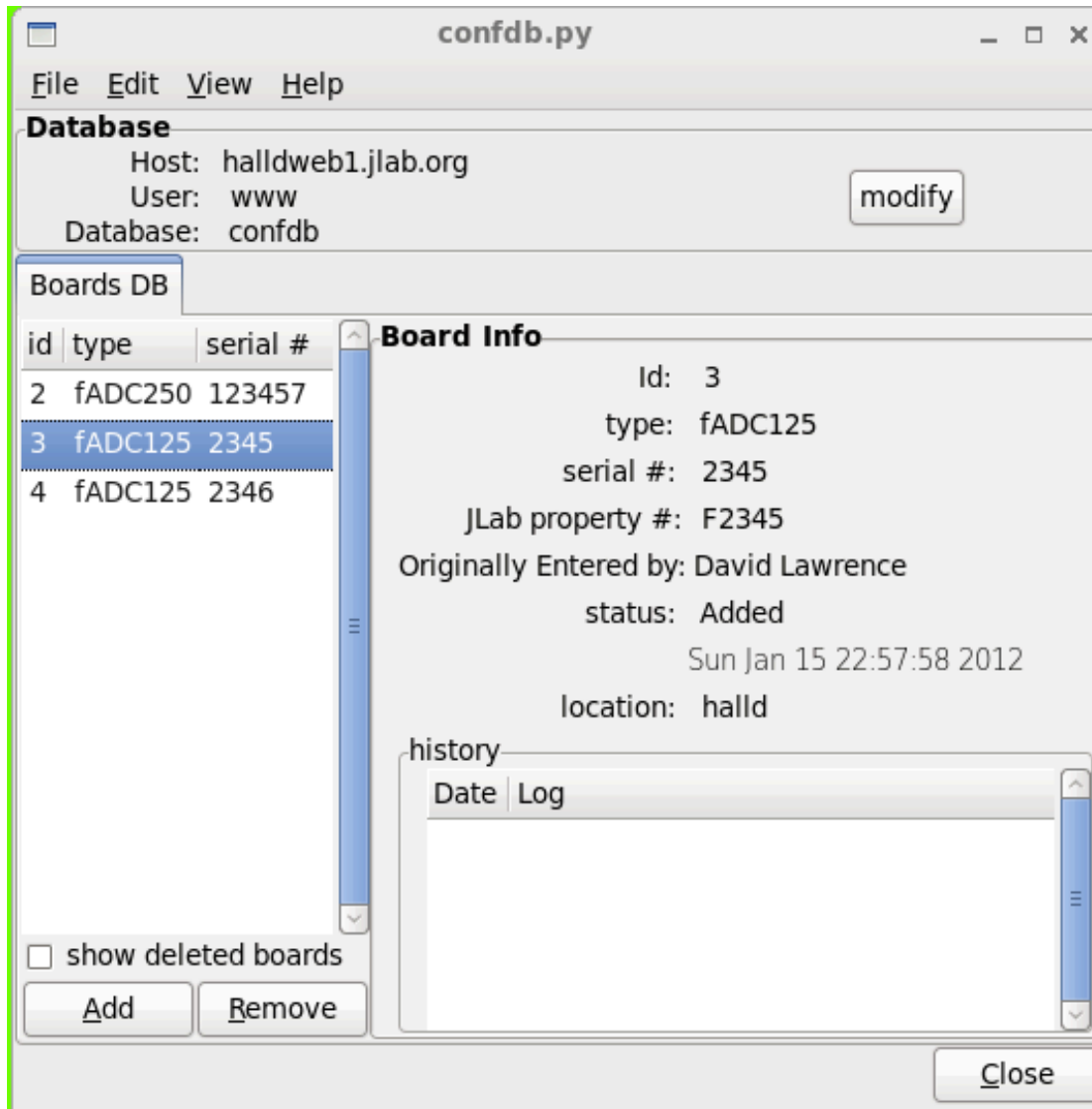


Some modifications ...

```
12
13 #+++++ Equipment List ++++++
14
15 #=====
16 # authors
17 #=====
18 CREATE TABLE IF NOT EXISTS authors (
19     id INT AUTO_INCREMENT PRIMARY KEY,
20     name VARCHAR(256),
21     email VARCHAR(256) UNIQUE,
22
23     modified TIMESTAMP,
24     created DATETIME
25 );
26
27 #=====
28 # boards
29 #=====
30 CREATE TABLE IF NOT EXISTS boards (
31     id INT AUTO_INCREMENT PRIMARY KEY,
32     boardtype_id INT,
33     serial_number VARCHAR(512),
34     property_control VARCHAR(512),
35     # other things like MAC address or memory offset ??
36
37     modified TIMESTAMP,
38     modifier_id INT,
39     created DATETIME,
40     creator_id INT,
41
42     UNIQUE(boardtype_id,serial_number)
43 );
44
```

- Authors table added
- (Almost) All tables have creator and modifier Id and time
- Board Status table added
- Locations table added with id pointing to it in status table
- History maintained (e.g. entry is made to mark board status as “deleted” rather than delete entry in database)

Glade-3 + GTK+ +python



Future

- Continue development of python-based GUI program
- Reconcile differences with Dmitry's current design (the one beyond what's documented in GlueX-doc-1872)
- Populate DB with existing board information and start using to identify additional modifications needed.