

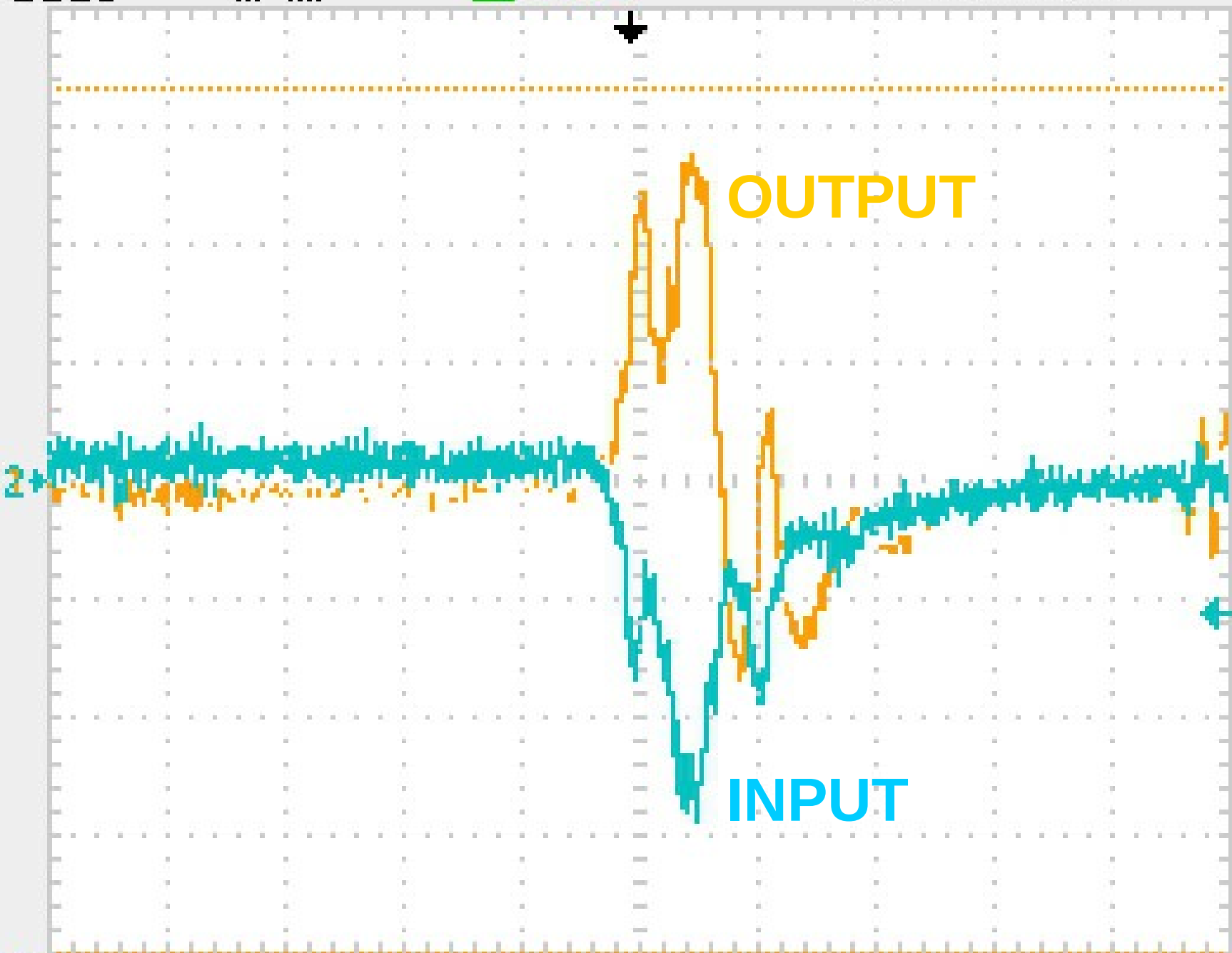
Tek



Trig'd

M Pos: 20.00ns

CH2



OUTPUT

INPUT

Coupling

AC

BW Limit

Off

200MHz

Volts/Div

Coarse

Probe

1X

Voltage

Invert

Off

CH1 50.0mV

CH2 10.0mV

M 250ns

CH2 ~ -11.2mV

12-Jun-14 01:29

152.002kHz

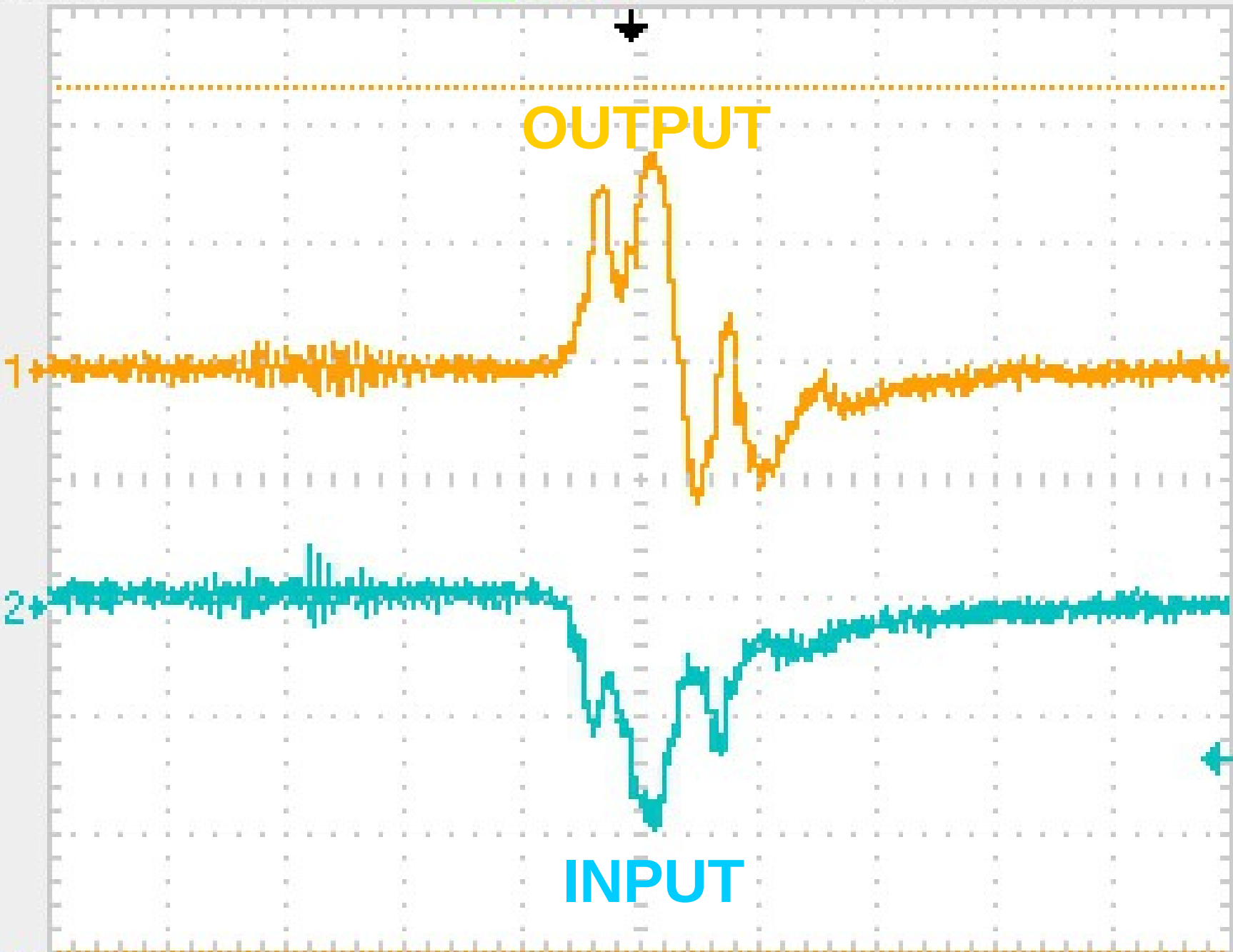
Tek

⌚

Trig'd

M Pos: 20.00ns

CH2



Coupling
AC

BW Limit
Off
200MHz

Volts/Div
Coarse

Probe
1X
Voltage

Invert
Off

CH1 100mV

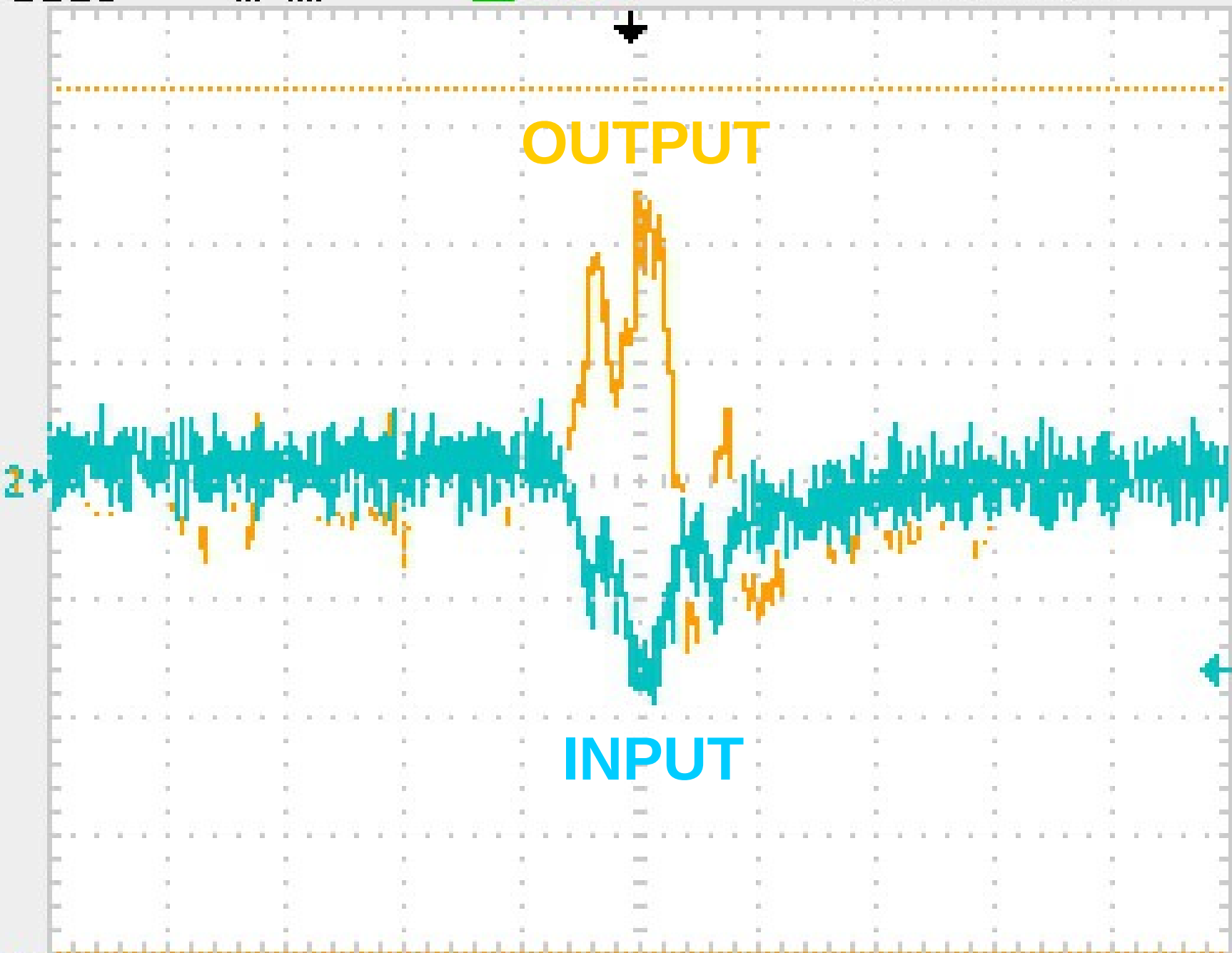
CH2 20.0mV

M 250ns

CH2 ~ -25.6mV

12-Jun-14 01:33

150.434kHz



CH2

Coupling
AC

BW Limit
Off
200MHz

Volts/Div
Coarse

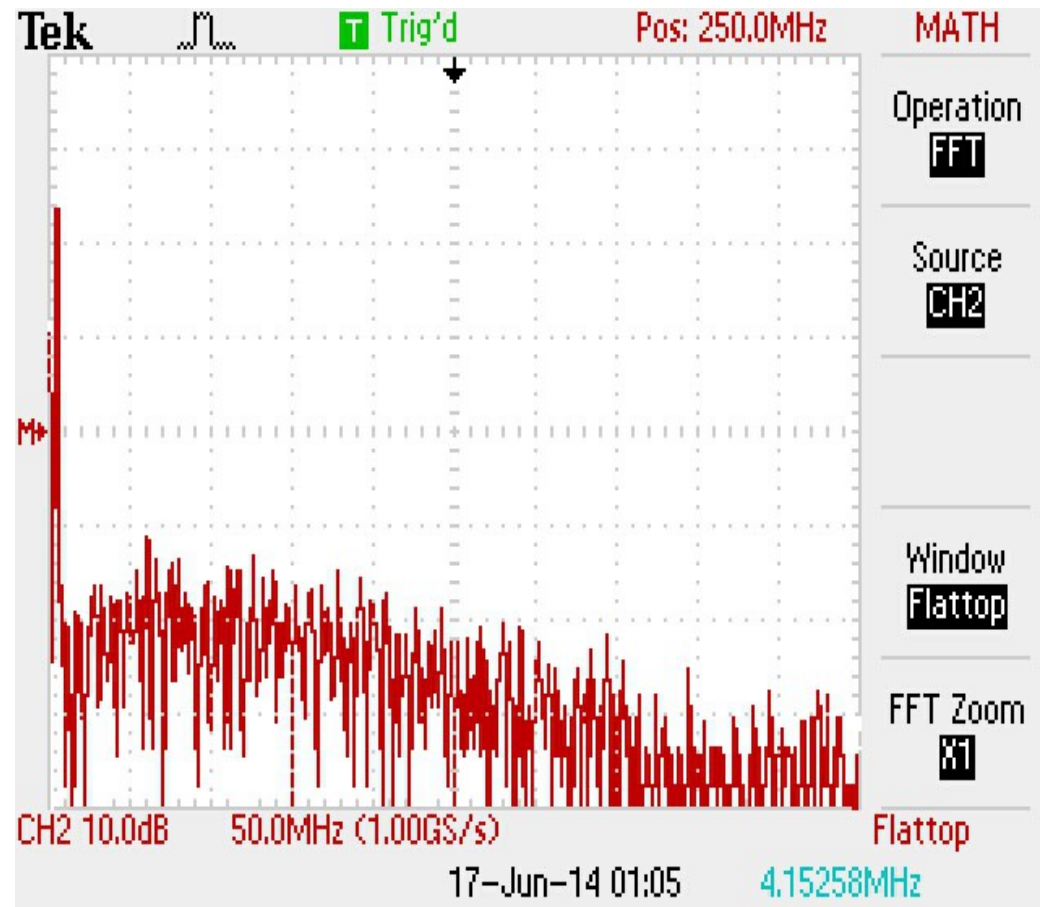
Probe
1X
Voltage

Invert
Off

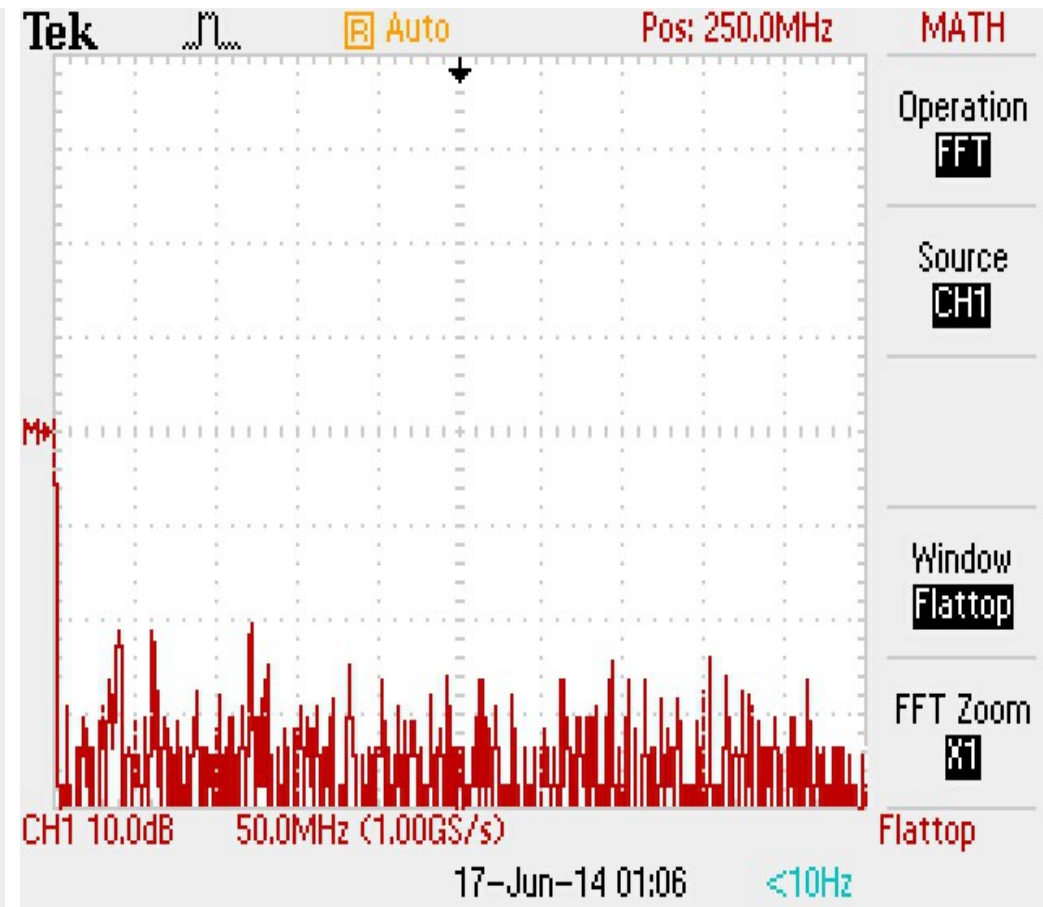
CH1 20.0mV CH2 5.00mV M 250ns CH2 ~ -8.00mV

(Sine wave with frequency of 5.0 MHz and amplitude of 3.5 mV through a blocking capacitor and then a 100 ohm resistor, expected current into amplifier ~35 uA)

INPUT



OUTPUT



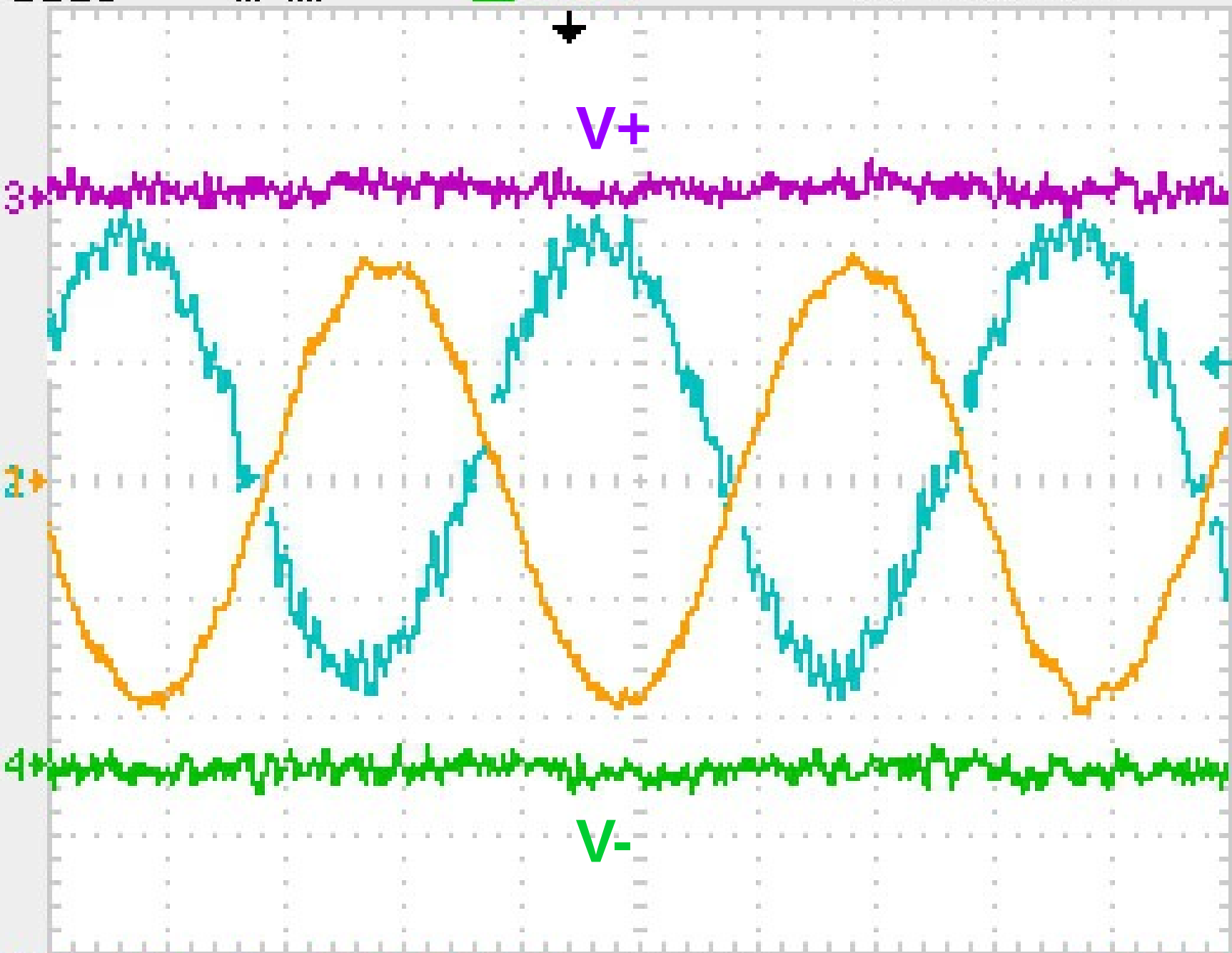
Tek



Trig'd

M Pos: 30.00ns

TRIGGER



Type
Edge

Source
CH2

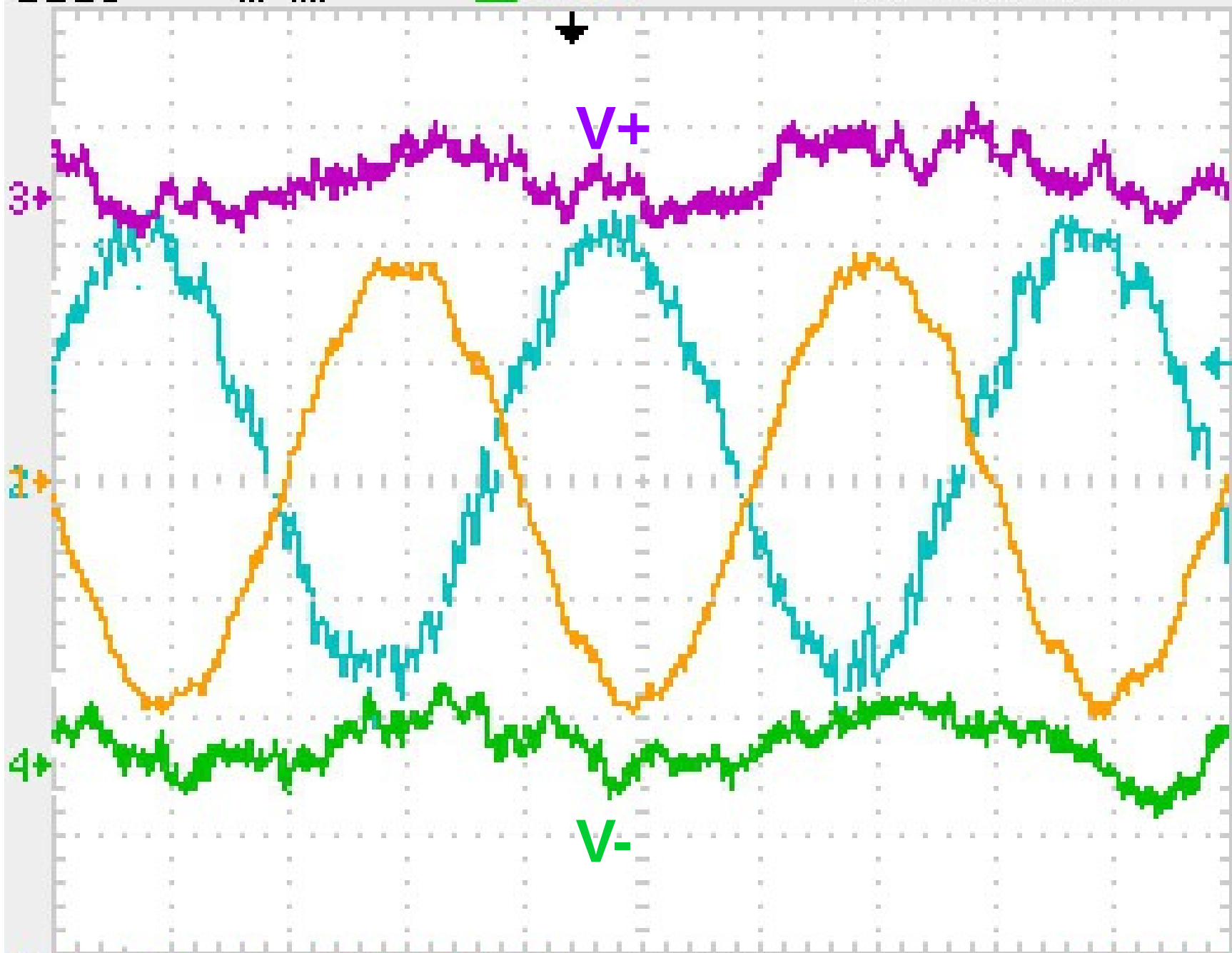
Slope
Rising

Mode
Auto

Coupling
DC

CH1 50.0mV CH2 5.00mV M 50.0ns CH2 / 5.00mV

CH3 100mV CH4 100mV 18-Jun-14 04:50 5.00228MHz



Type **Edge**

Source **CH2**

Slope **Rising**

Mode **Auto**

Coupling **DC**

Improved amplifier circuit with ferrites for power conditioning (already sent out to PCB manufacturer, should arrive within days).

