

Chamber alignment update

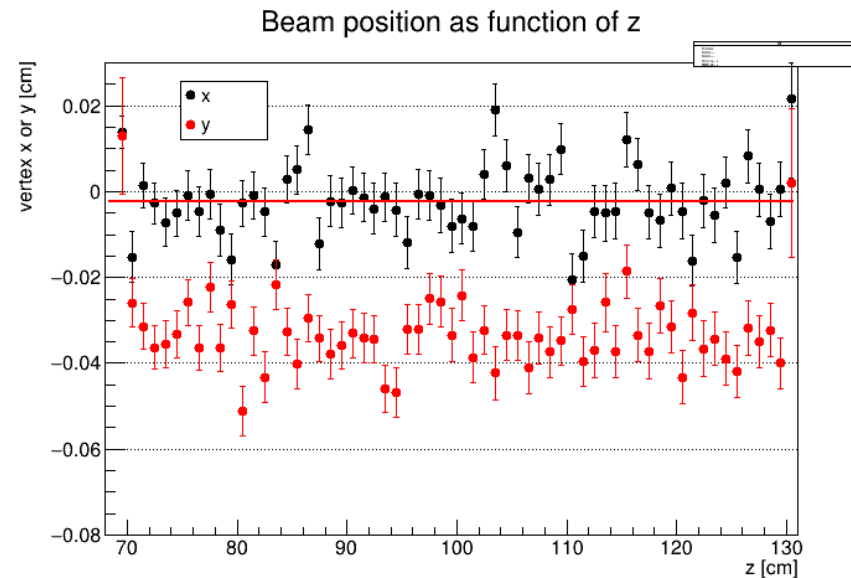
Simon Taylor / JLab

- Removed 1.7 mm x-offset for CDC
- Still working on correct y-offset
- Fix misinterpretation of CDC rotation angles in ccdb: $\varphi_y \rightarrow \varphi_x$, $\varphi_x \rightarrow -\varphi_y$
 - Also adjusted φ_x to be consistent with survey number

Current ccdb: $\varphi_x=0.1389$ mrad, $\varphi_y=-0.175$ mrad, $\varphi_z=0.7854$ mrad

My sqlite: $\varphi_x=0.3805$ mrad, $\varphi_y=0.1389$ mrad, $\varphi_z=0.7854$ mrad

Using tracks in CDC
only

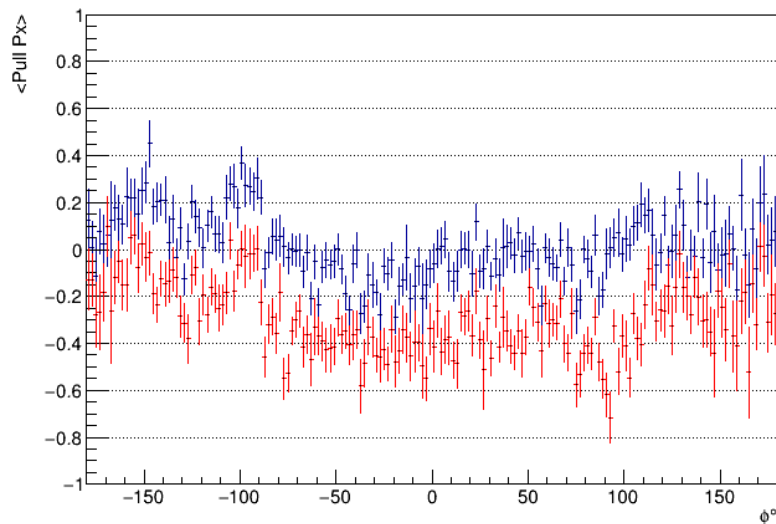


Proton pulls for φ events

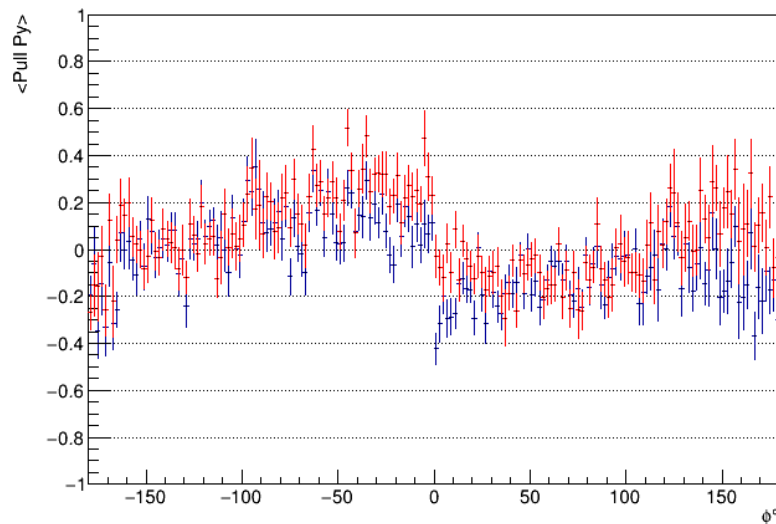
Current cddb: $\delta x=0.17$ cm, $\delta y=-0.04$ cm, $\varphi_x=0.1389$ mrad, $\varphi_y=-0.175$ mrad, $\varphi_z=0.7854$ mrad

My sqlite: $\delta x=-0.013$ cm, $\delta y=-0.04$ cm, $\varphi_x=0.380$ mrad, $\varphi_y=0.1389$ mrad, $\varphi_z=0.7854$ mrad

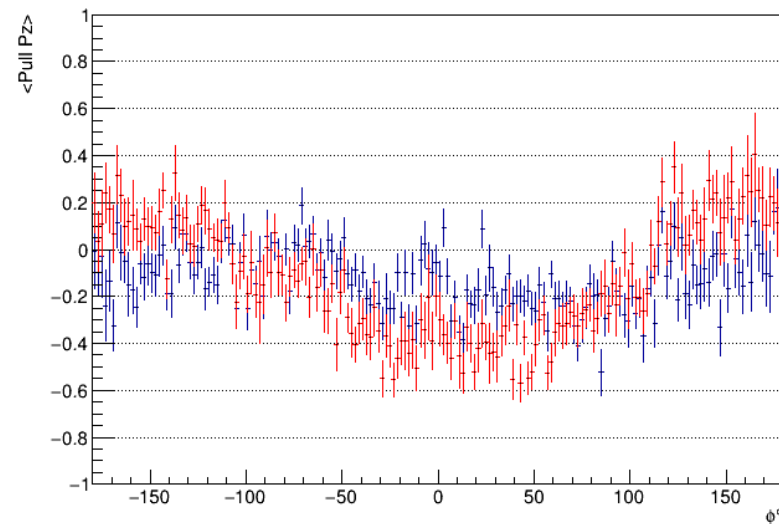
Pull Px for Proton



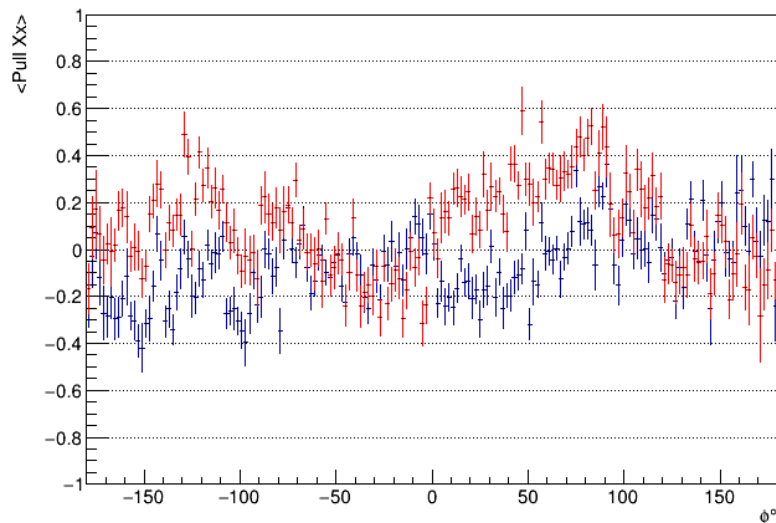
Pull Py for Proton



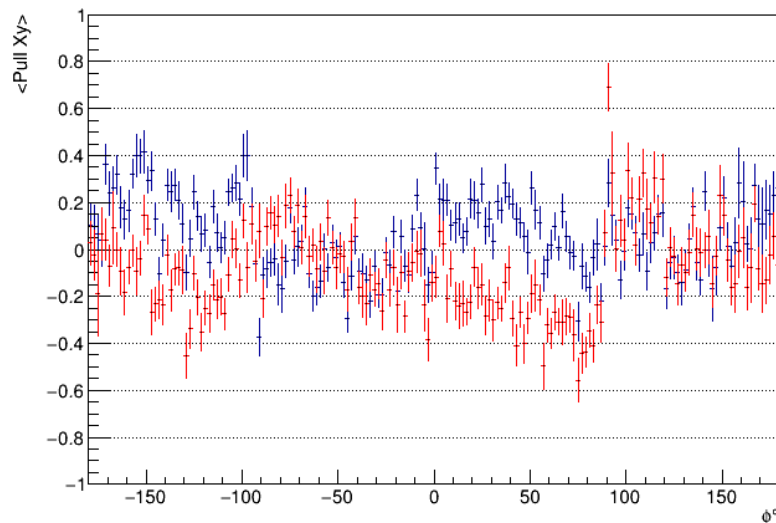
Pull Pz for Proton



Pull Xx for Proton



Pull Xy for Proton



Pull Xz for Proton

