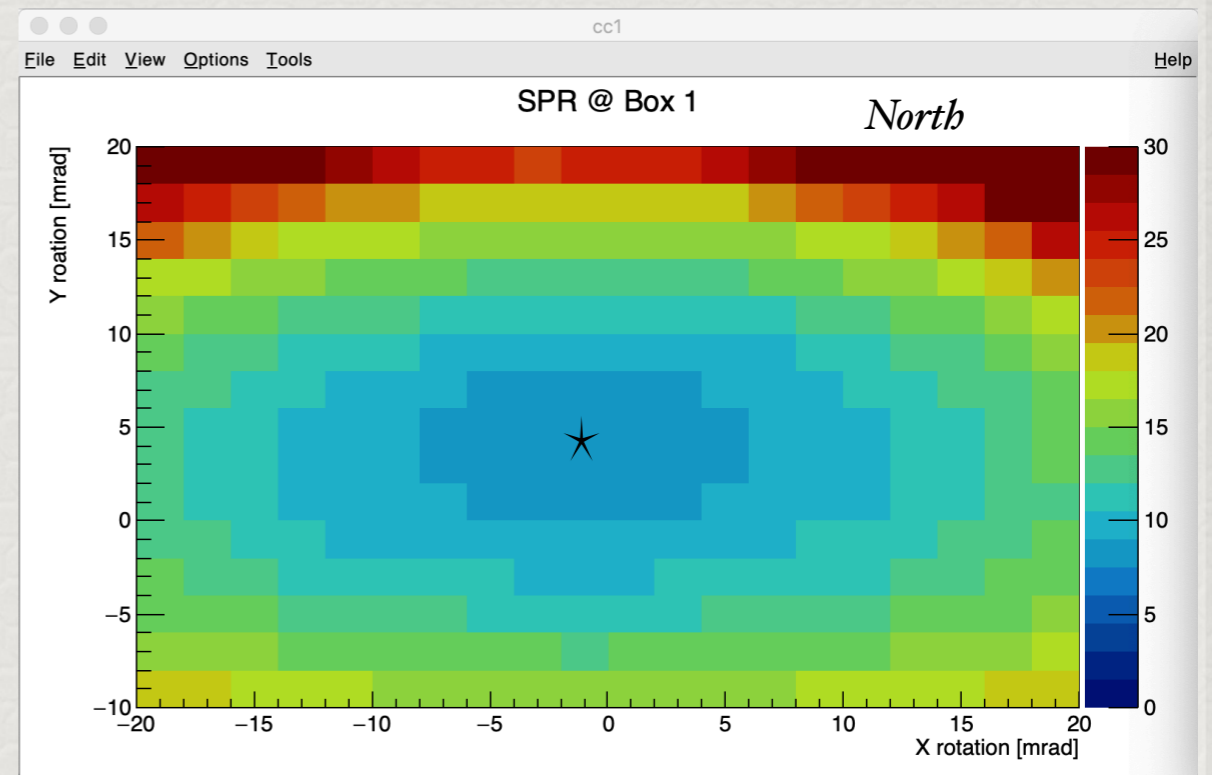
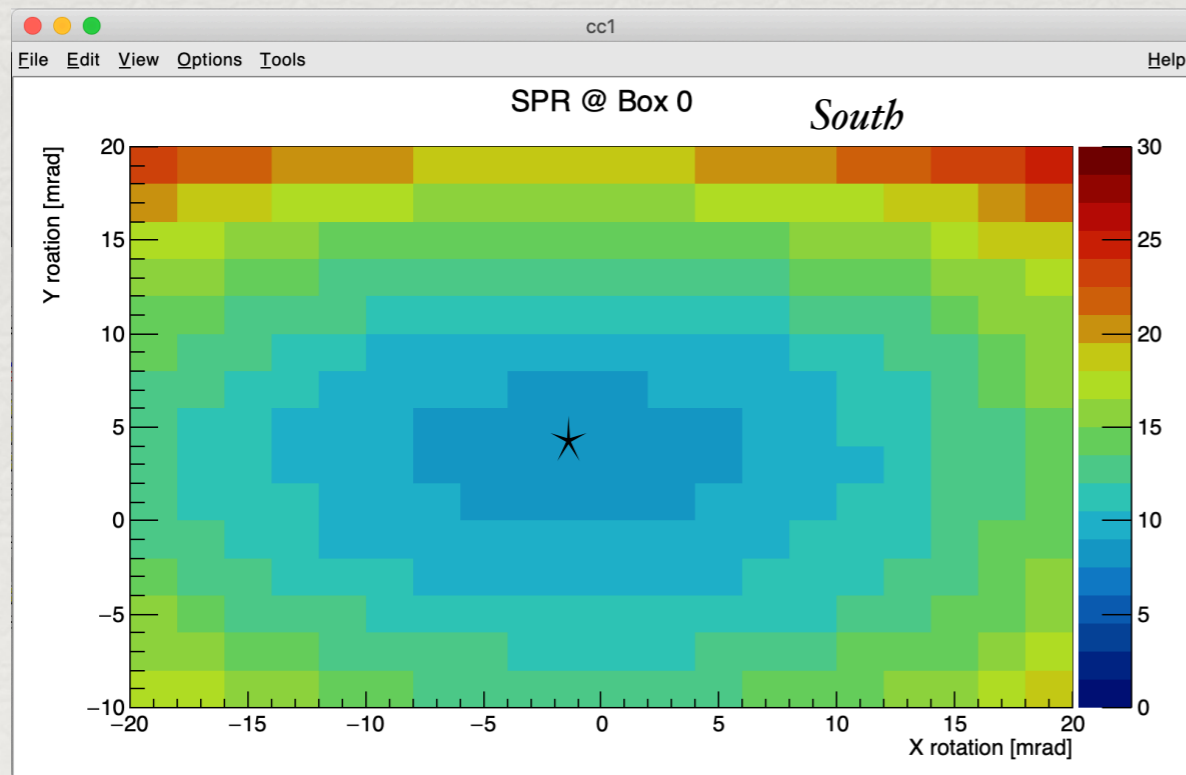


GlueX DIRC Beam Data Momentum Correction

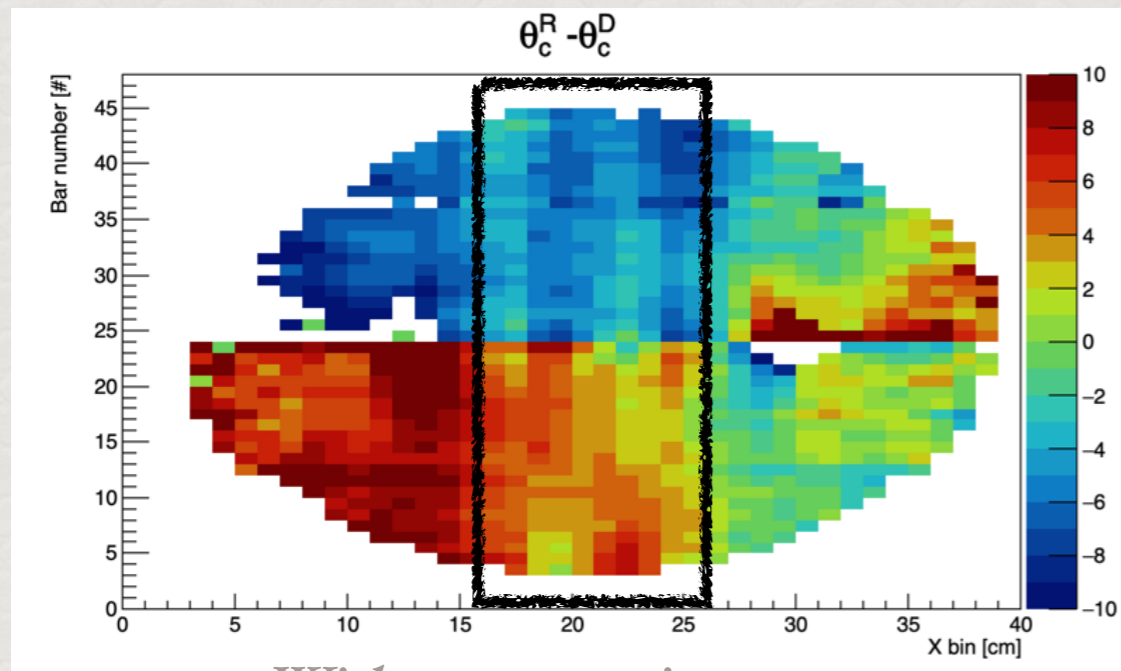
A. Ali

3 Aug 2020

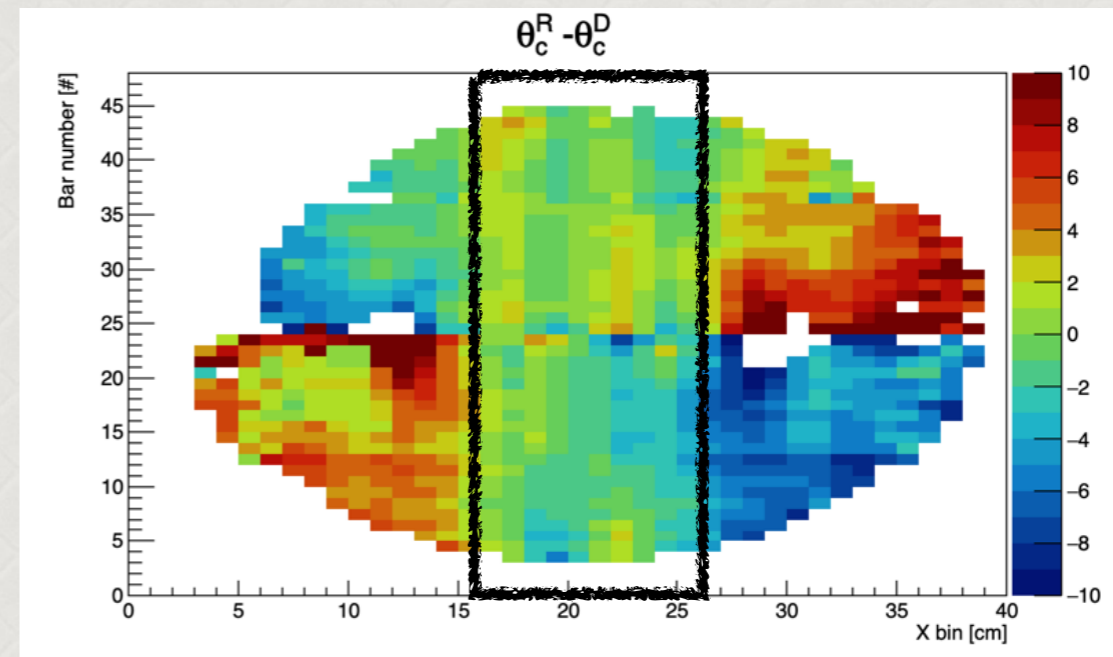
Momentum Correction



Reflected / Direct Cherenkov angle difference

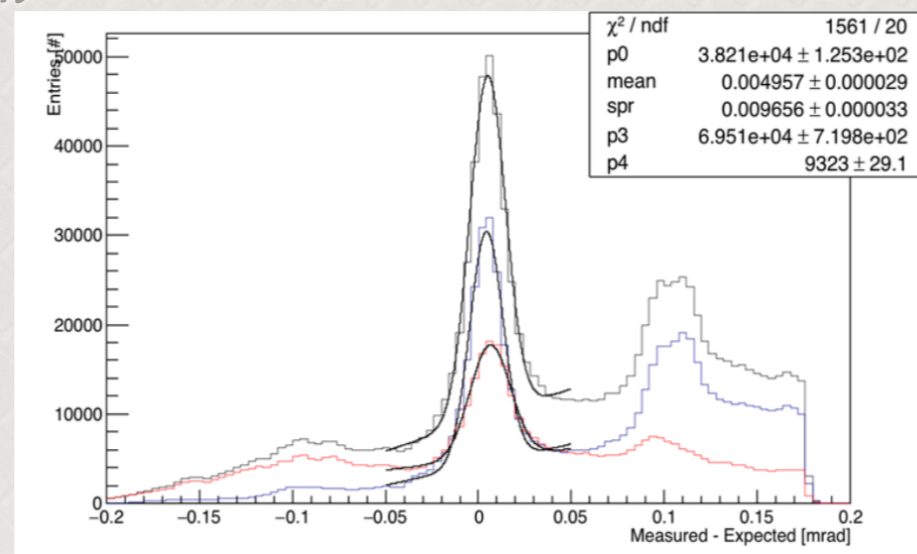


Without correction

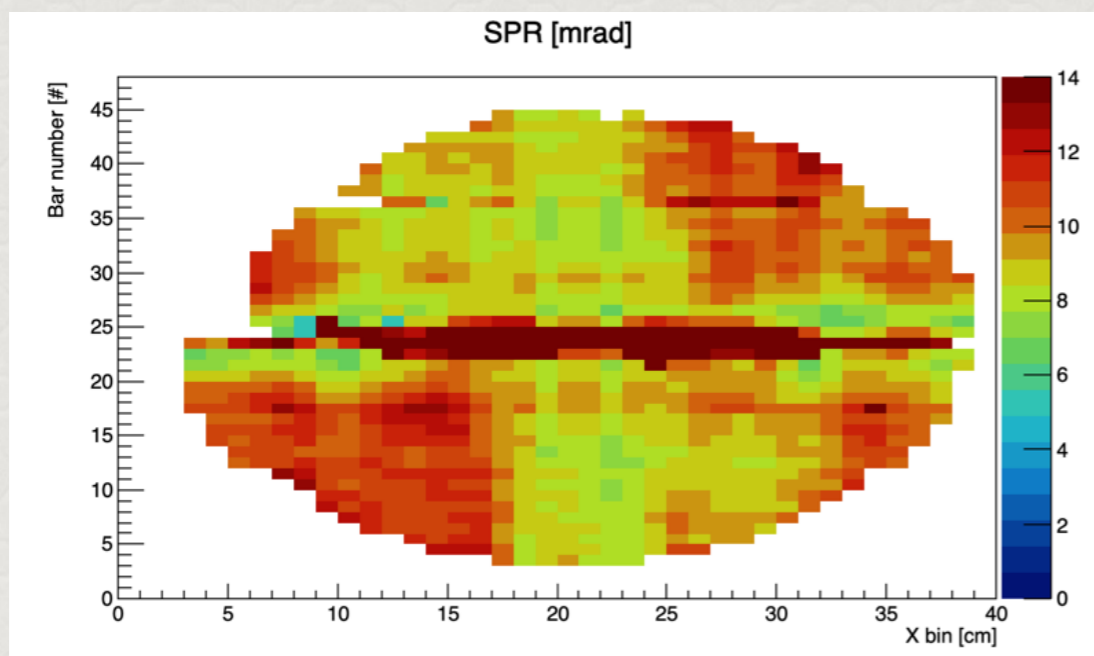


Momentum correction

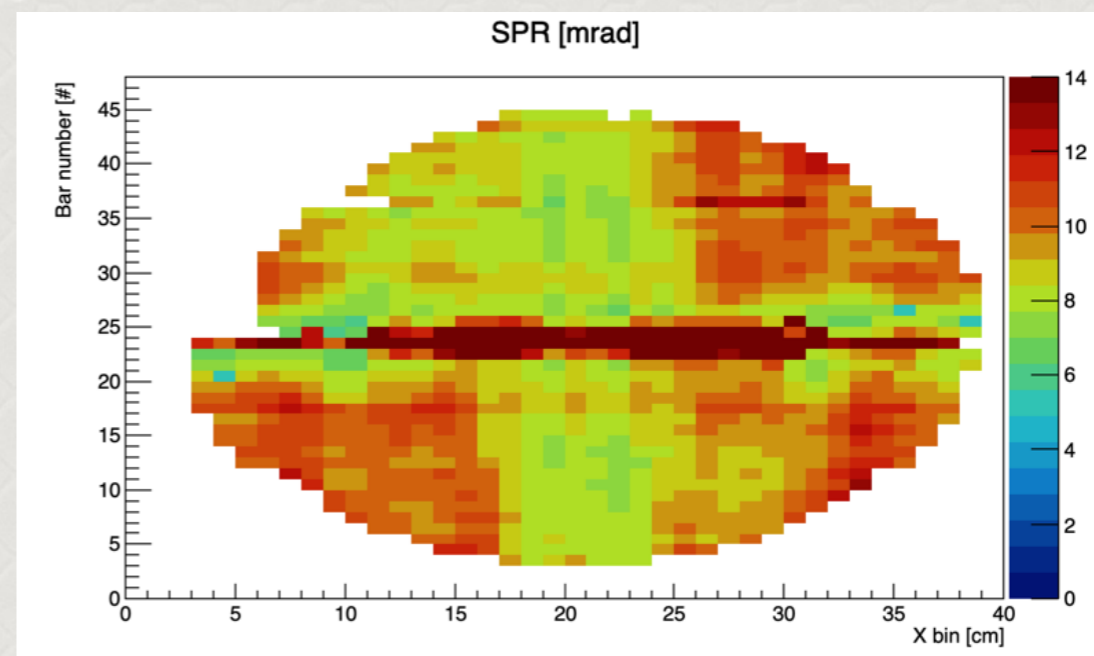
Without per PMT correction



SPR



Without correction

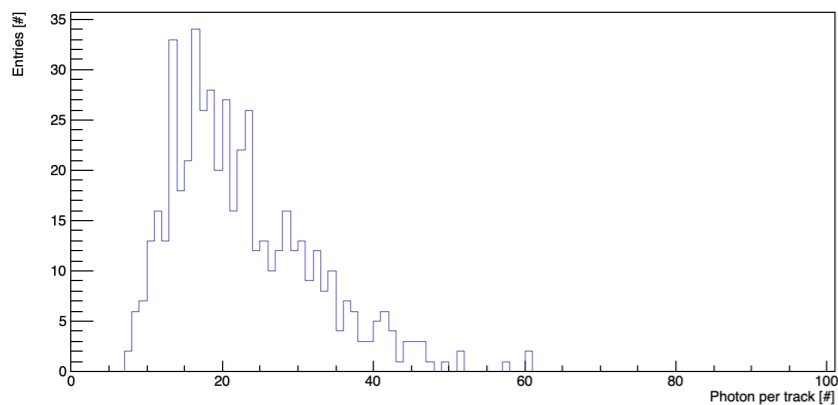


*Momentum correction
Without per PMT correction*

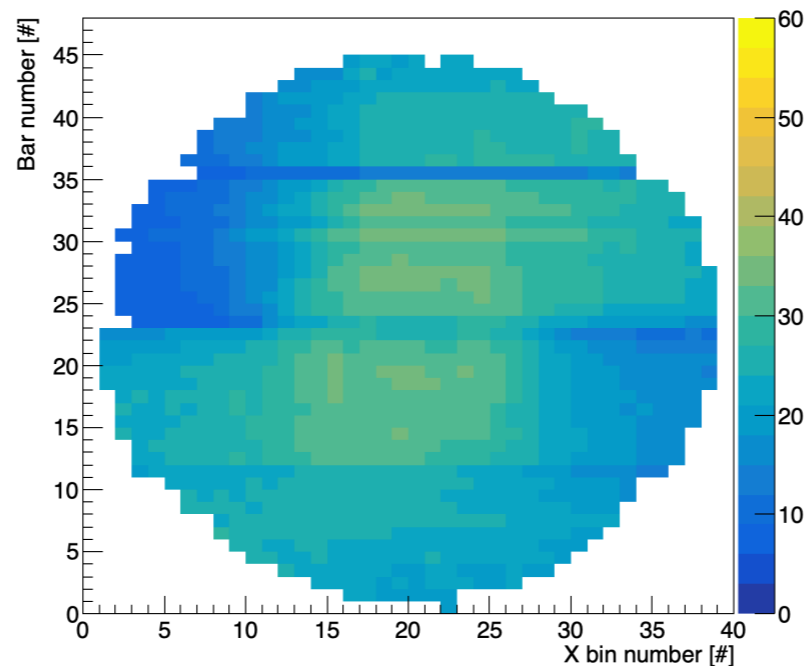
No important difference

Photon Yield Map

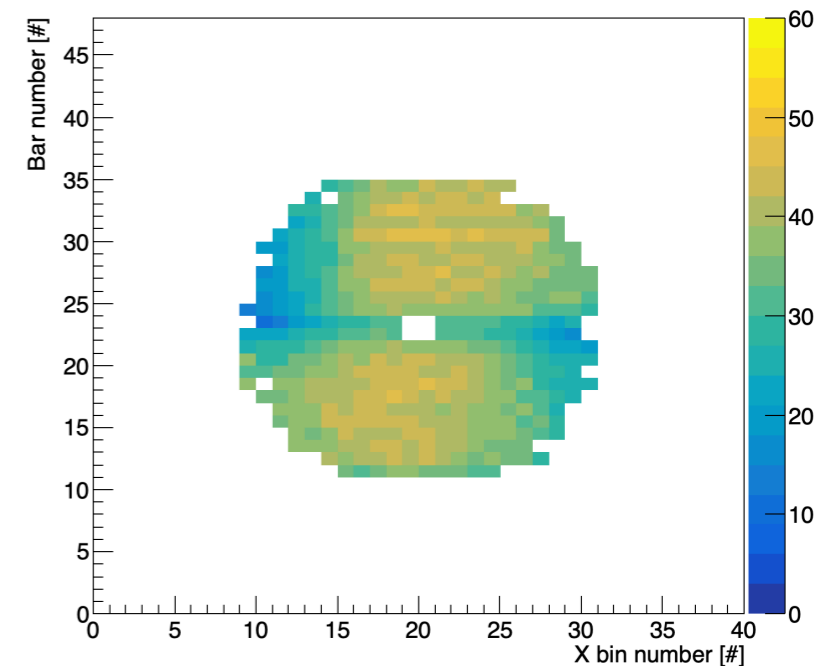
Beam Data



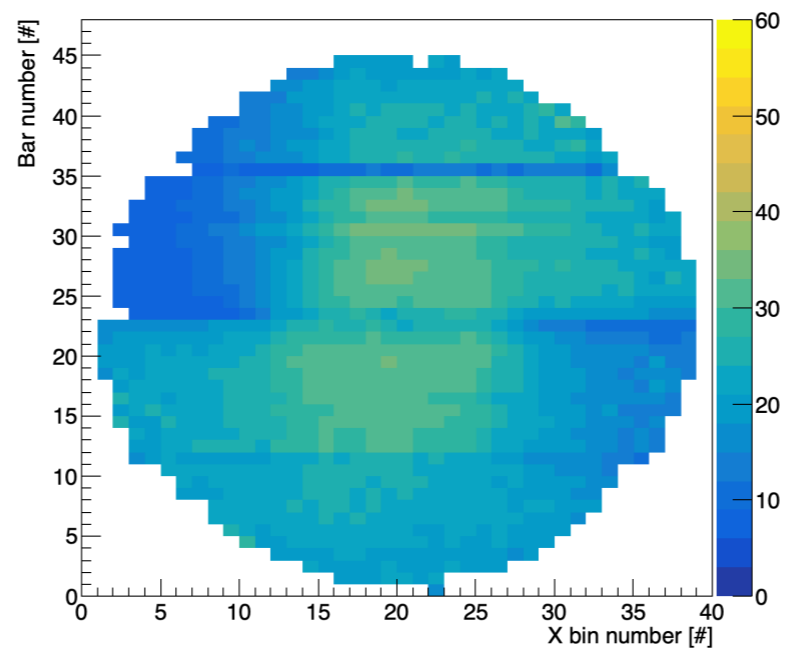
π yield @ Momentum [3.5 - 4.0] GeV/c



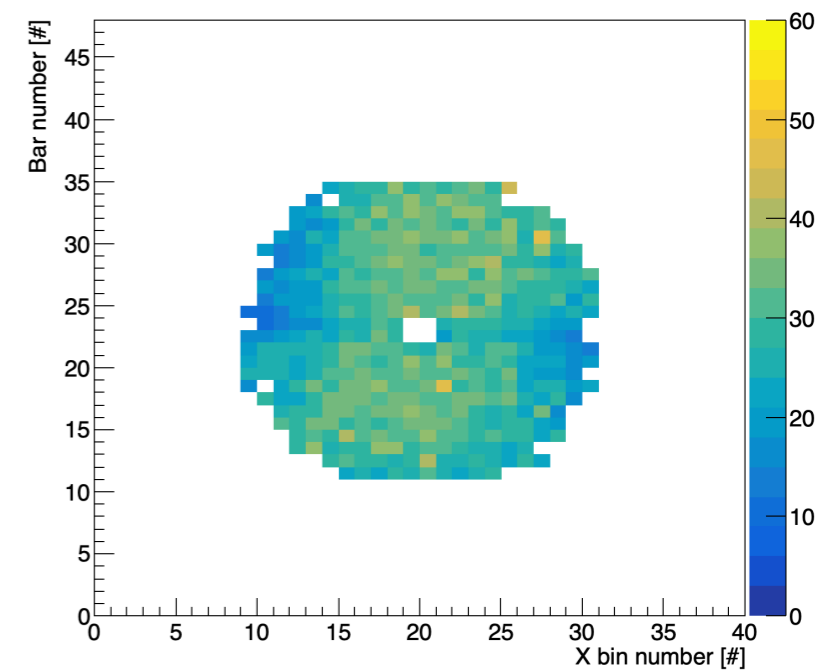
K yield @ Momentum [3.5 - 4.0] GeV/c



π yield single @ Momentum [3.5 - 4.0] GeV/c



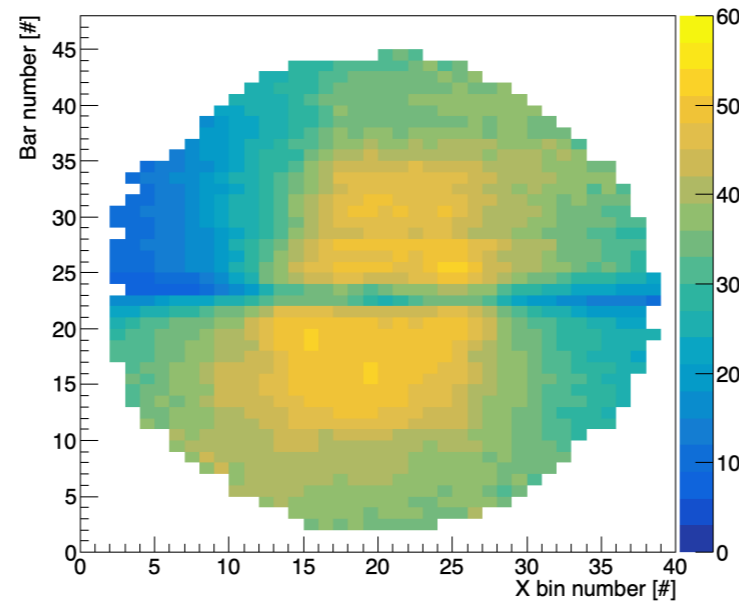
K yield single @ Momentum [3.5 - 4.0] GeV/c



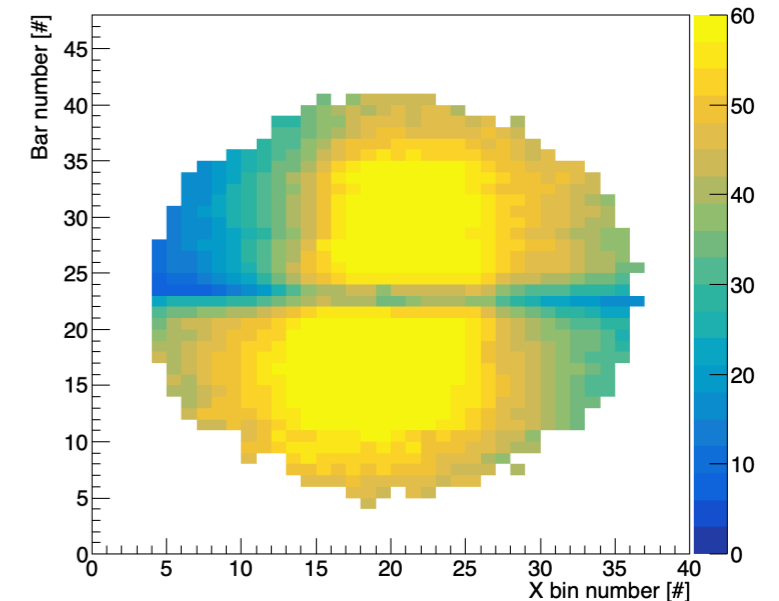
**Single Track
Events**

Photon Yield Map Simulation

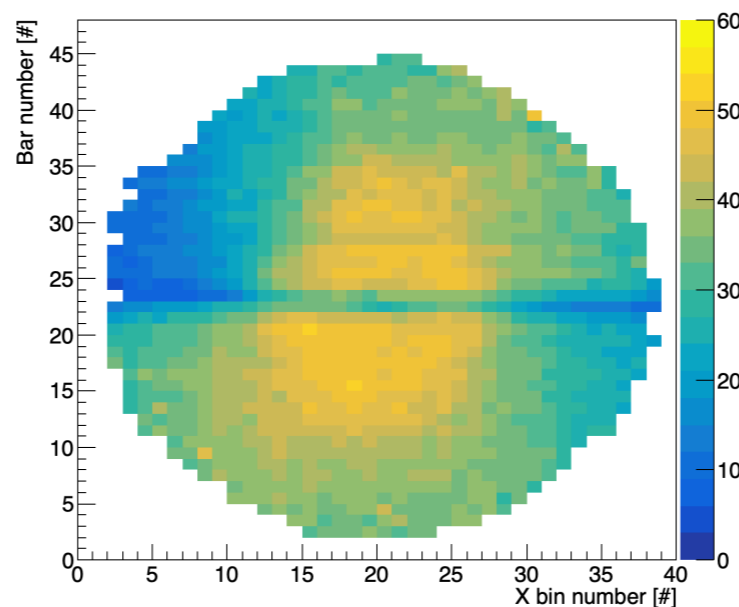
π yield @ Momentum [3.5 - 4.0] GeV/c



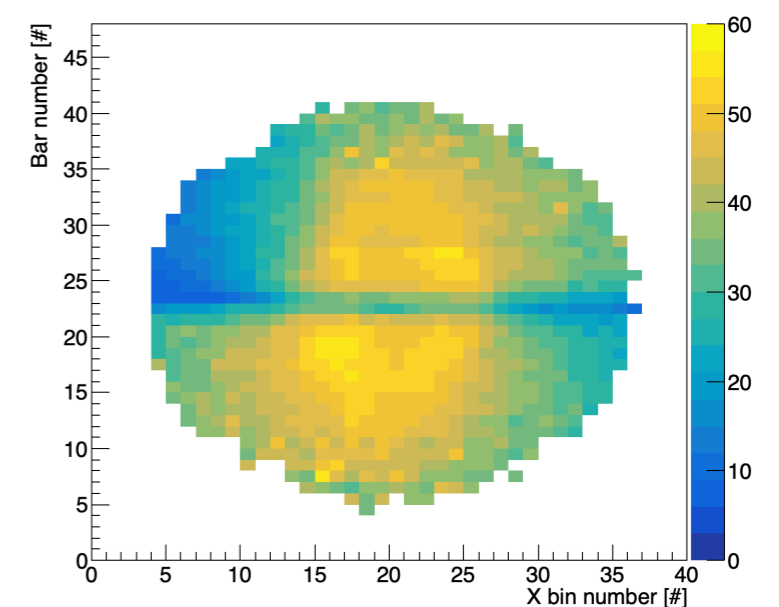
K yield @ Momentum [3.5 - 4.0] GeV/c



π yield single @ Momentum [3.5 - 4.0] GeV/c

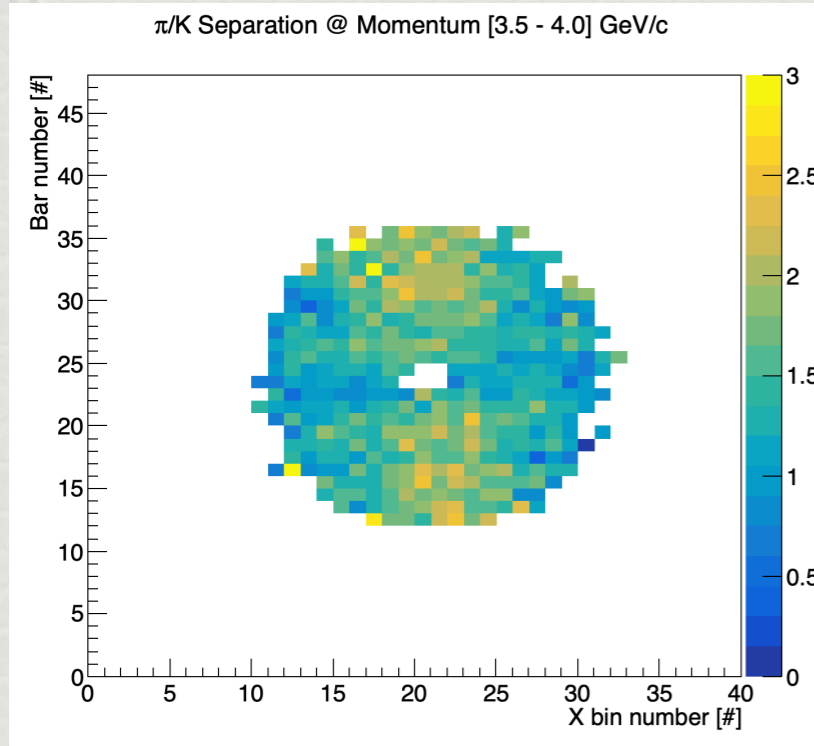


K yield single @ Momentum [3.5 - 4.0] GeV/c

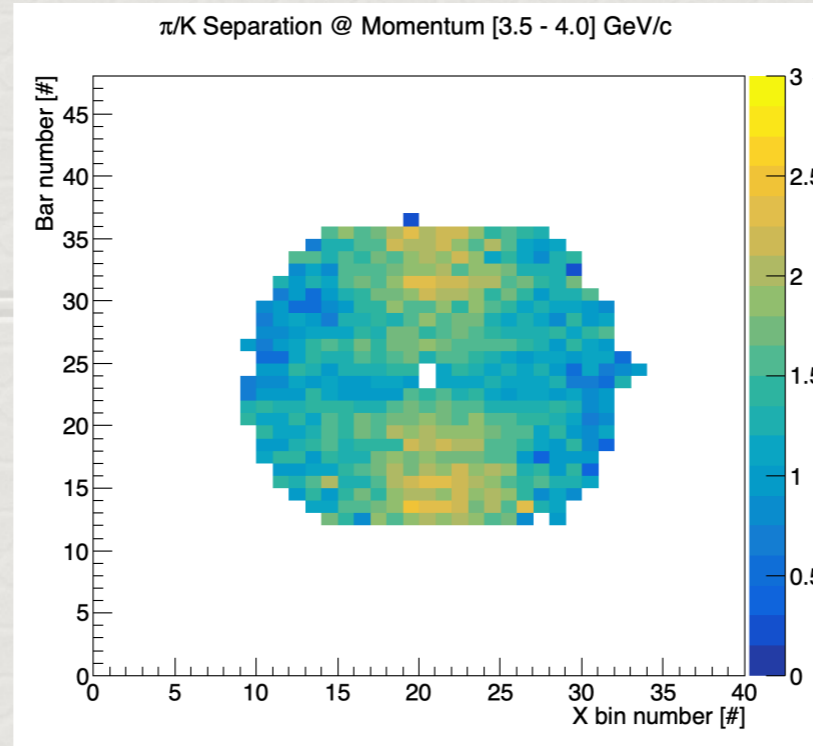


**Single Track
Events**

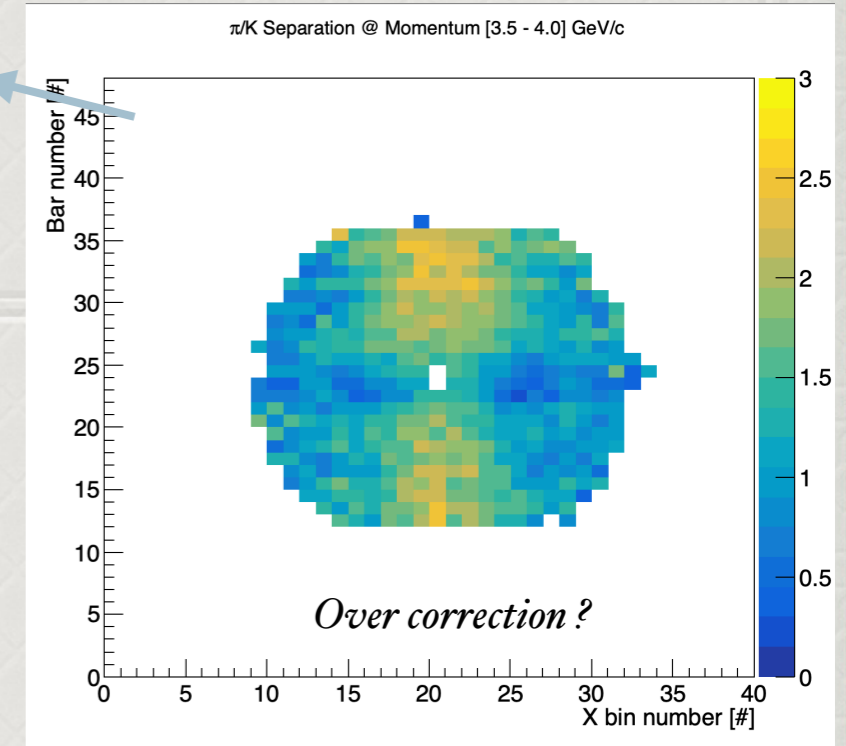
Separation Power Sim



Without correction



*Momentum correction
Without per PMT correction*



*After Per PMT and
Momentum correction*

