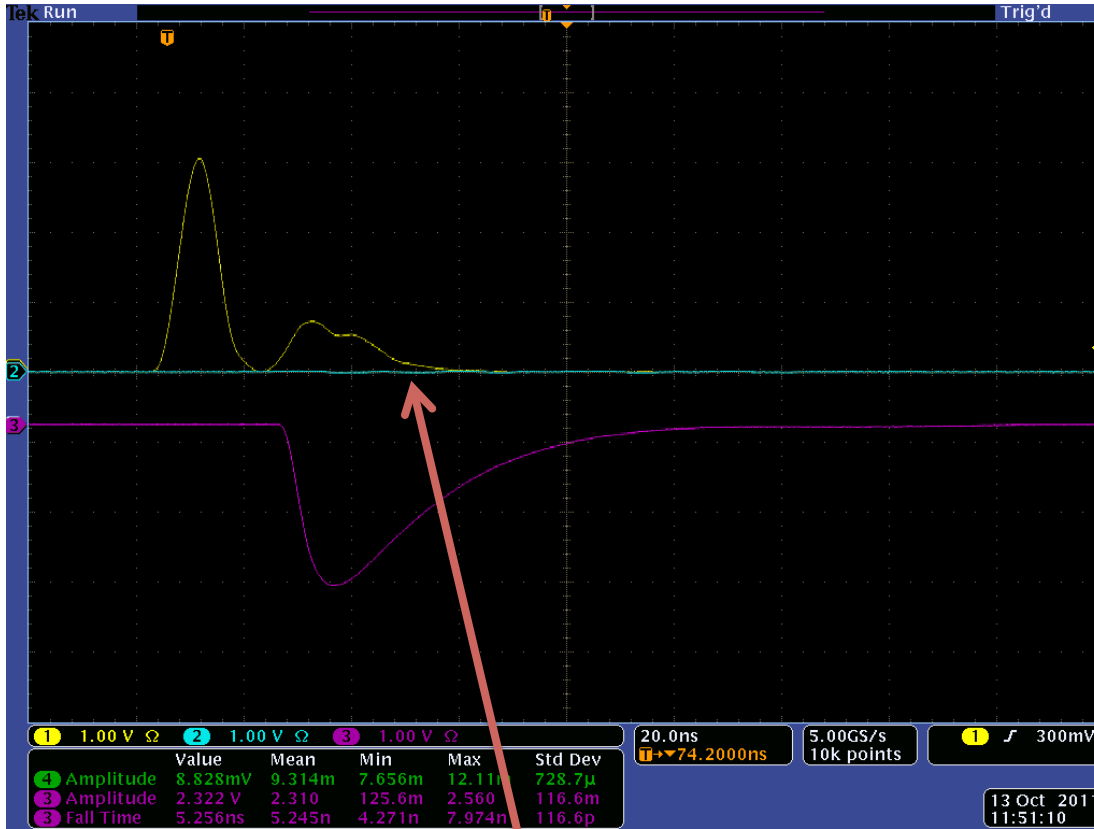
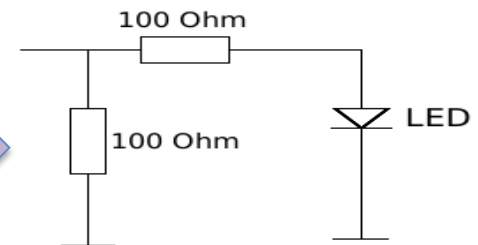
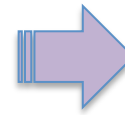
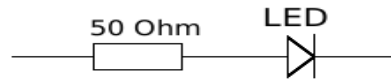


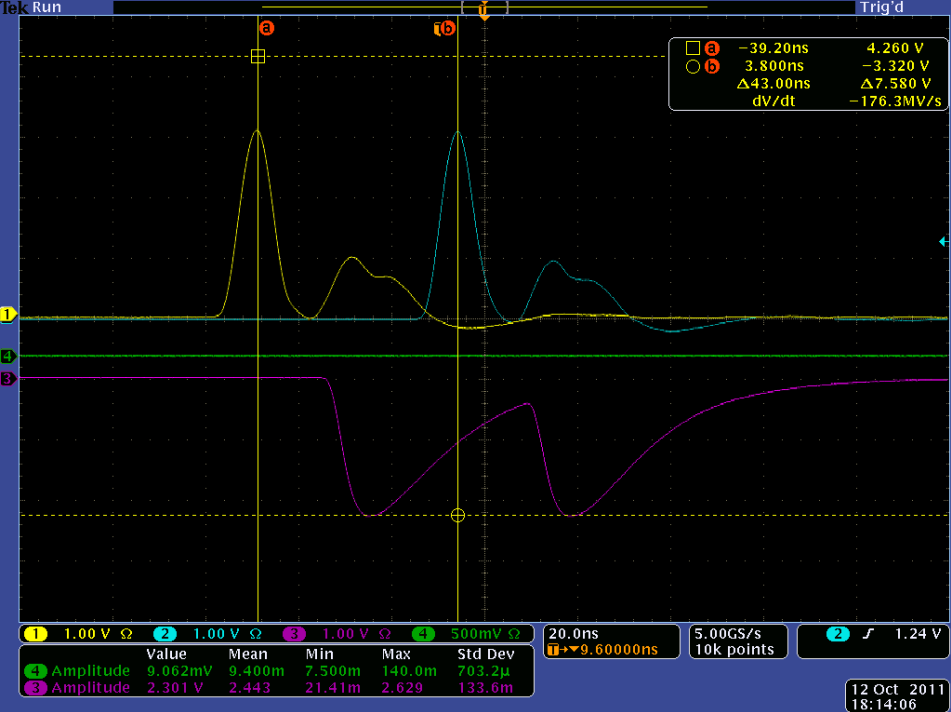
SiPM 3x3 mm², 50 μm

Rise time is about 5 ns

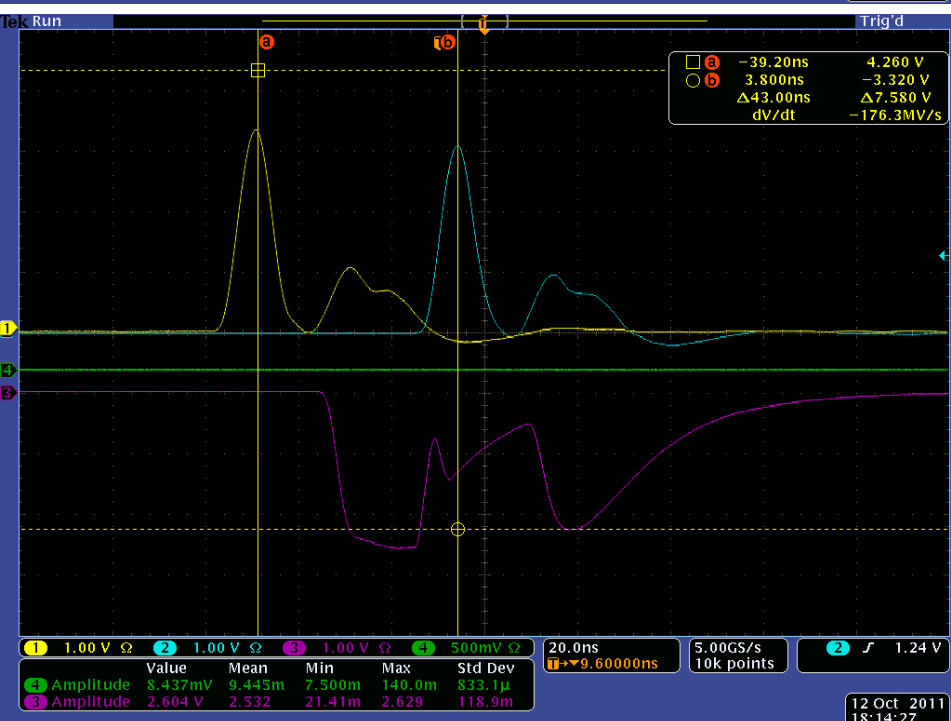


LED reflection





Fr = 1,0 kHz
 U(1 LED) = 3,15 V
 U(2 LED) = 3,15 V



Fr = 1,0 kHz
 U(1 LED) = 3,55 V
 U(2 LED) = 3,15 V

SiPM recovery time < 50 ns