

Report

February 7, 2012

Stage 1

Quality Assurance Program for MPPC

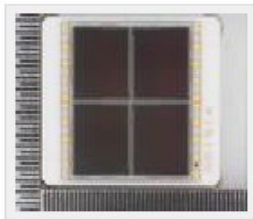
UTFSM - Database Storing Interface

Detail View MPPC

Database Data

MPPC Photograph procedure images

Front View Pictures



Rear View Pictures



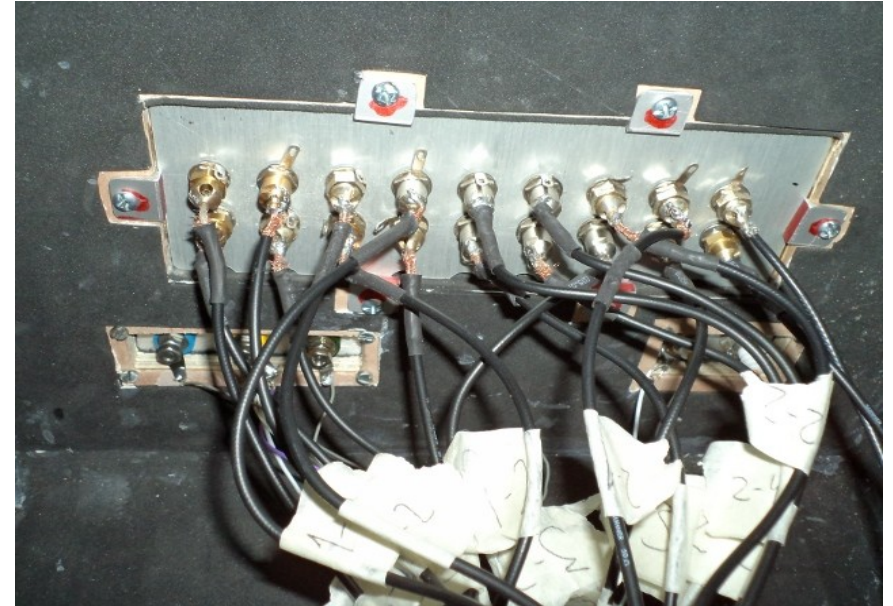
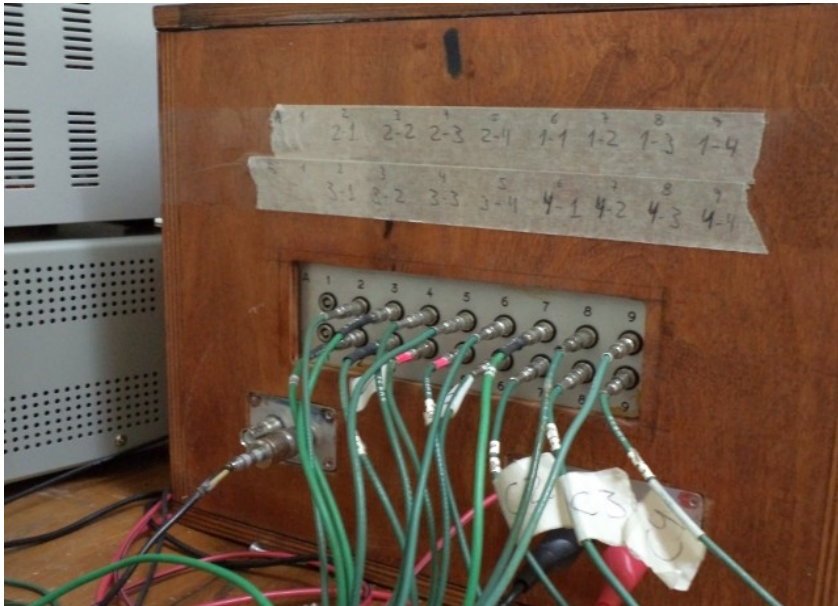
MPPC Documentation

Main menu

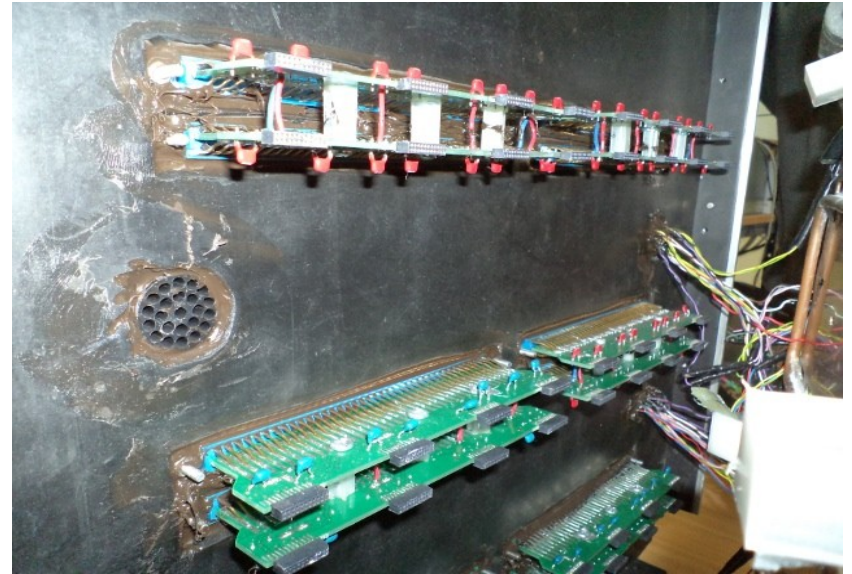
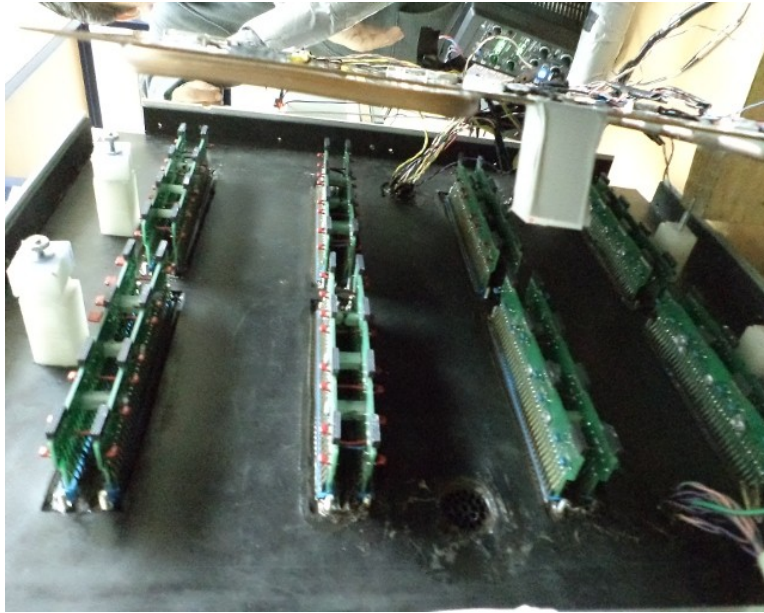
- [Home](#)
- Stage 1: Shipping and Inspection
 - [Shipping and Receiving](#)
 - [Inspection Procedures](#)
 - [Upload MPPC Files](#)
 - [Current Status](#)
- Stage 2: PDE
 - [PDE Test Submit](#)
 - [PDE Pulse Shape Interface](#)
 - [Run Status](#)
- Stage 3: DarkBox
 - [Setup MPPC Position](#)
 - [Check MPPC Test Status](#)
 - [Run Status](#)
 - [System Data](#)
- Admin
 - [General Status](#)
 - [Users](#)
 - [Register Shift Report](#)



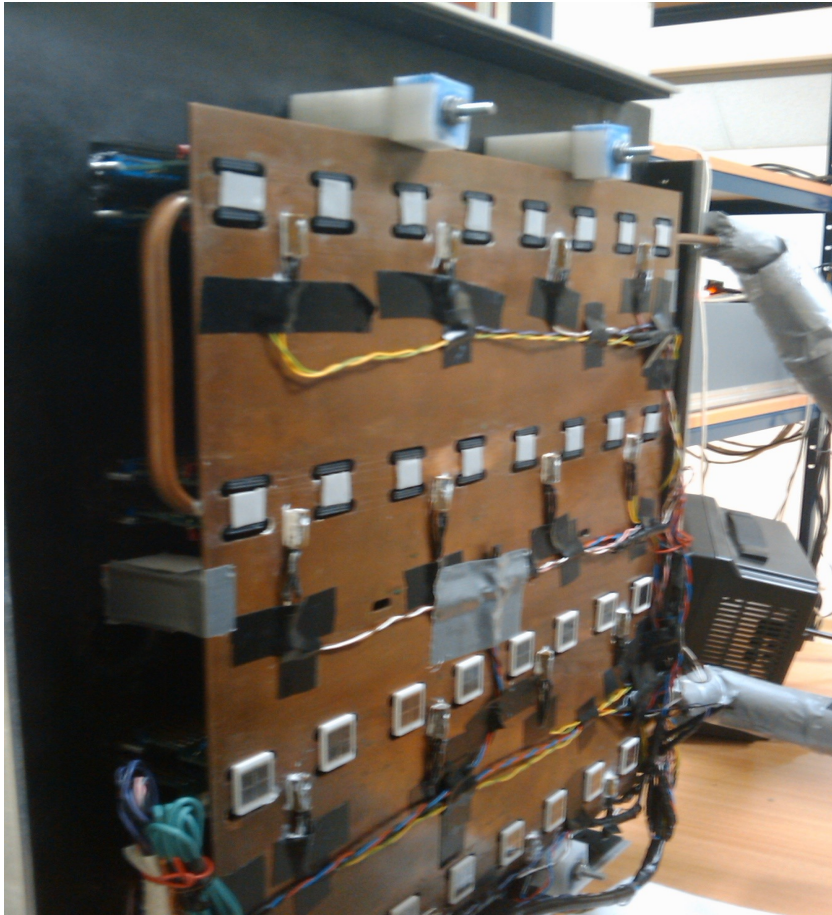
Stage 2



Stage 3

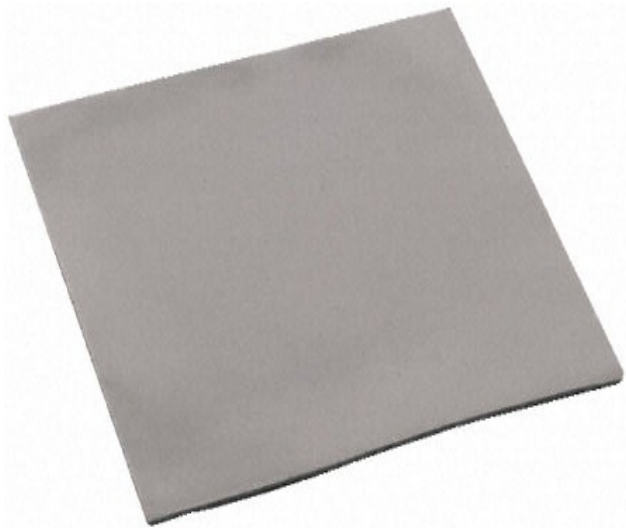


Stage 3



Stage 3

Gap Pad 2000S40



TYPICAL PROPERTIES OF GAP PAD 2000S40			
PROPERTY	IMPERIAL VALUE	METRIC VALUE	TEST METHOD
Color	Gray	Gray	Visual
Reinforcement Carrier	Fiberglass	Fiberglass	—
Thickness (inch) / (mm)	0.020 to 0.125	0.508 to 3.175	ASTM D374
Inherent Surface Tack (1 or 2 sided)	2	2	—
Density (g/cc)	2.9	2.9	ASTM D792
Heat Capacity (J/g-K)	0.6	0.6	ASTM C351
Hardness, Bulk Rubber (Shore 00) (1)	35	35	ASTM D2240
Young's Modulus (psi) / (kPa) (2)	45	310	ASTM D575
Continuous Use Temp (°F) / (°C)	-76 to 392	-60 to 200	—
ELECTRICAL			
Dielectric Breakdown Voltage (Vac)	340	13.4 kVac/mm	ASTM D149
Dielectric Constant (1000 Hz)	6.0	6.0	ASTM D150
Volume Resistivity (Ohm-meter)	4.2×10^{11}	4.2×10^{11}	ASTM D257
Flame Rating	V-O	V-O	U.L.
THERMAL			
Thermal Conductivity (W/m-K)	2.0	2.0	ASTM D5470
1) One second delay value Shore 00 hardness scale. 2) Young's Modulus, calculated using 0.01 in/min. step rate of strain with a sample size of 0.79 inch ² . For more information on Gap Pad modulus, refer to Bergquist Application Note #116.			

Thank you