

# Run 090094

## Data

/cache/halld/RunPeriod-2021-11/rawdata/Run090094/hd\_rawdata\_090094\_001.evio  
/cache/halld/RunPeriod-2021-11/rawdata/Run090094/hd\_rawdata\_090094\_002.evio

ccdb:

/group/halld/www/halldweb/html/dist/ccdb.sqlite

JANA\_HOME

/group/halld/Software/builds/Linux\_CentOS7.7-x86\_64gcc4.8.5/jana/jana\_0.8.2^root62404/Linux\_CentOS7.7-x86\_64-gcc4.8.5

JANA\_CALIB\_URL

sqlite:///work/halld2/home/bhesha/Initialsetup/ccdb.sqlite

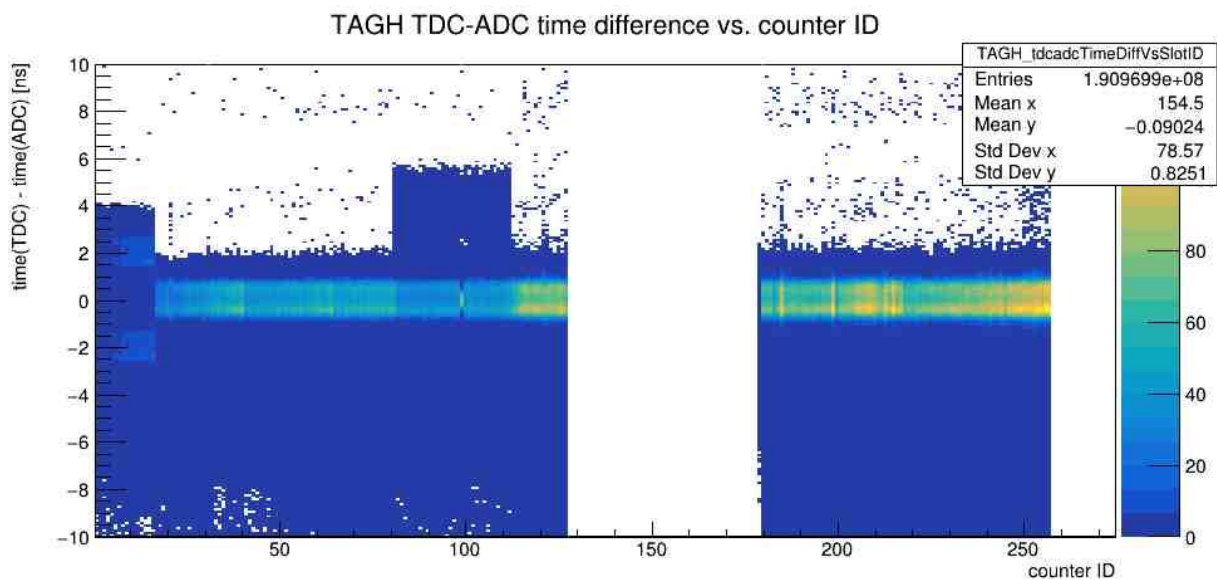
HALLD\_RECON\_HOME

/u/group/halld/Software/builds/Linux\_CentOS7.7-x86\_64-gcc4.8.5/halld\_recon/halld\_recon-4.30.0

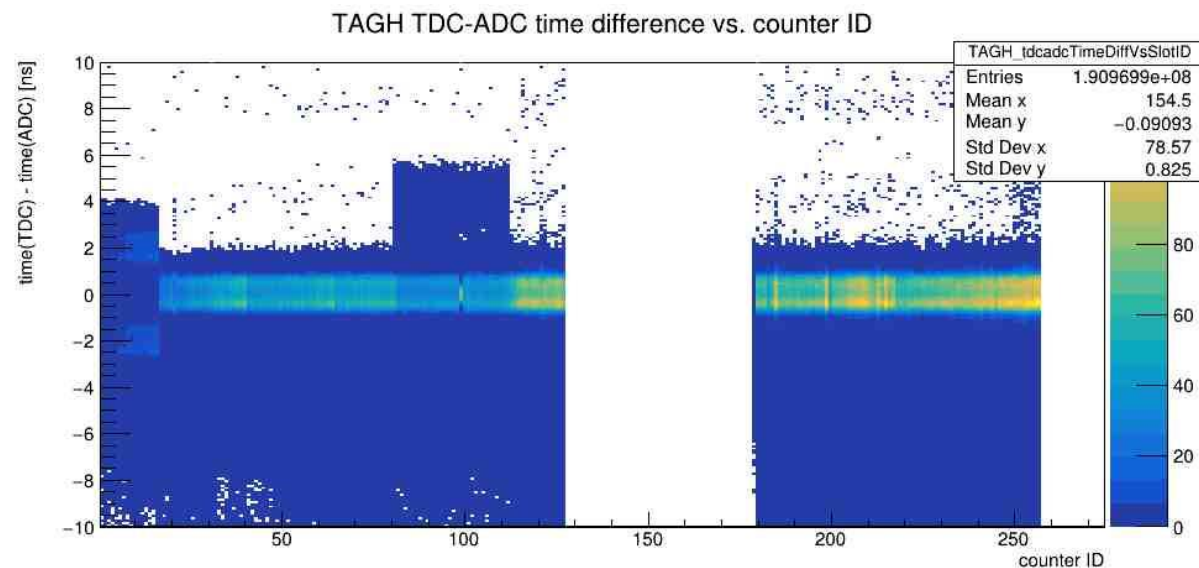
Plugins: TAGH\_timewalk

# TAGH TDC-ADC ALIGNMENT

Before Calibration

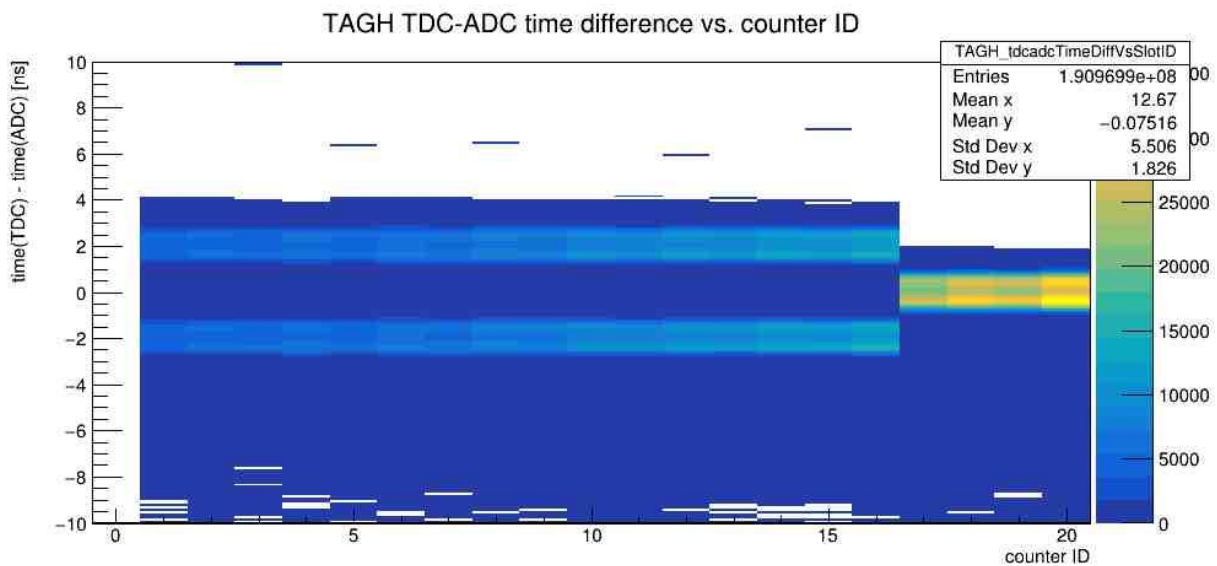


After Calibration

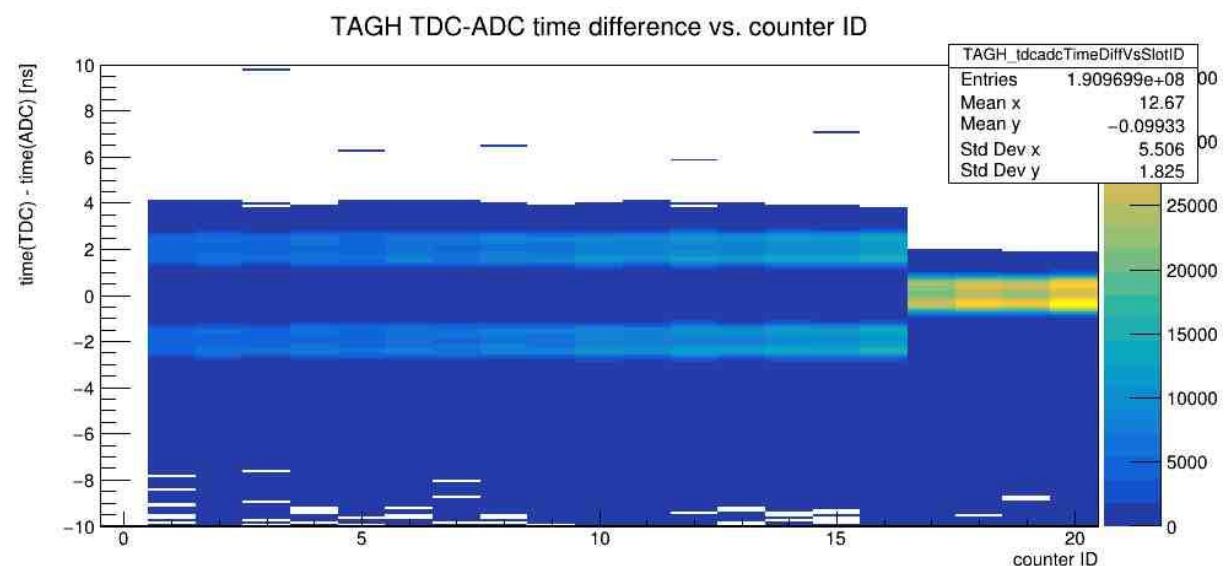


# TAGH TDC-ADC ALIGNMENT

Before Calibration



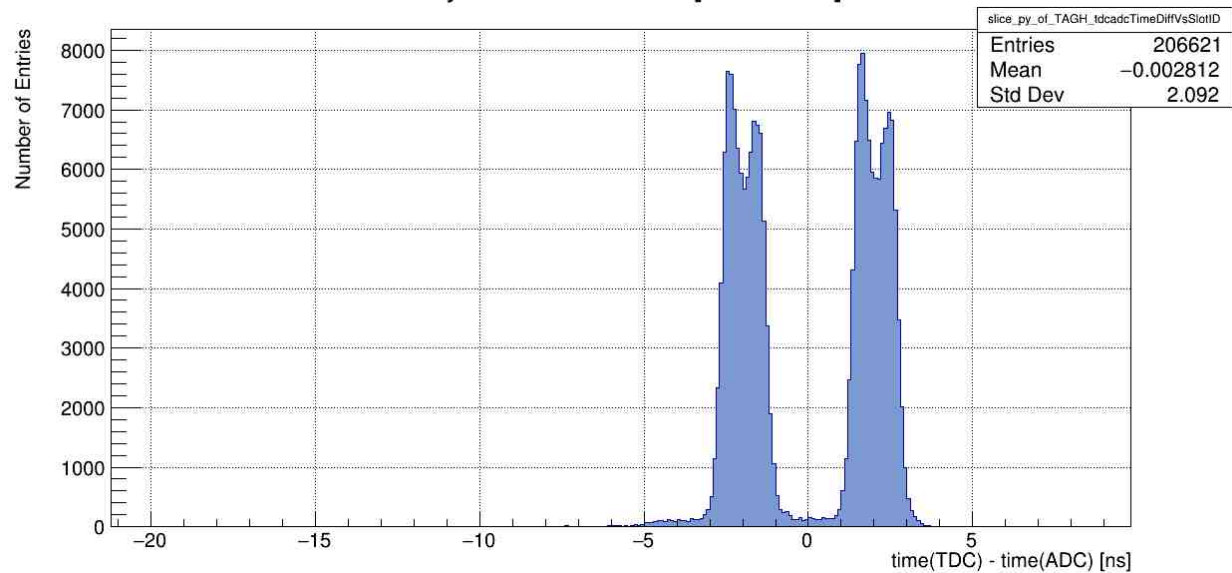
After Calibration



# TAGH TDC-ADC ALIGNMENT

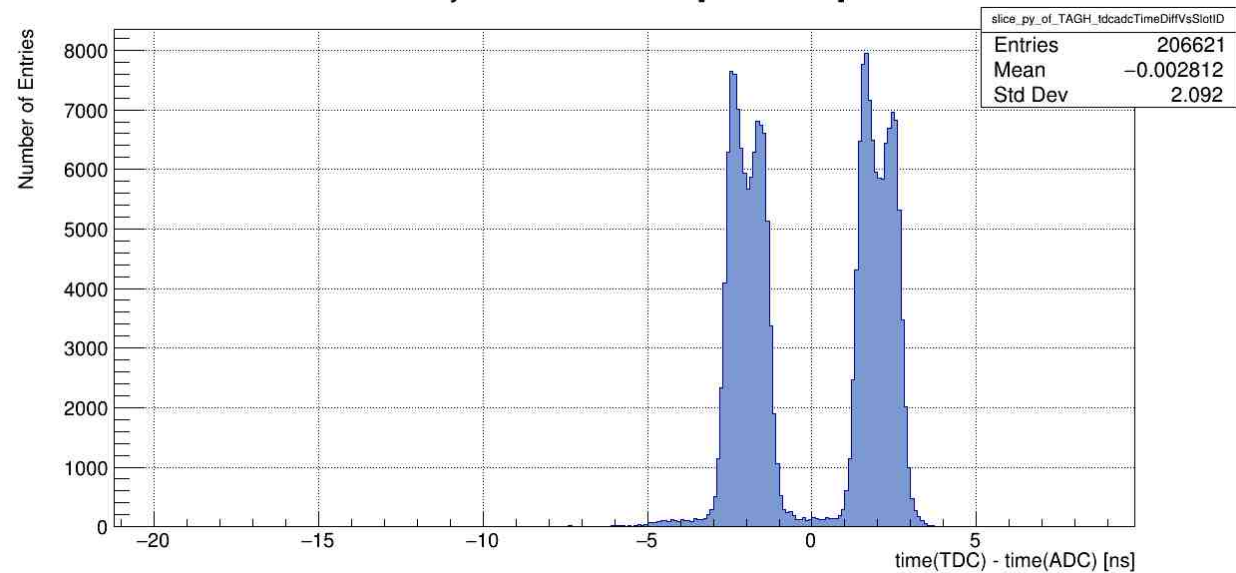
Before Calibration

ProjectionY of binx=6 [x=5.5..6.5]



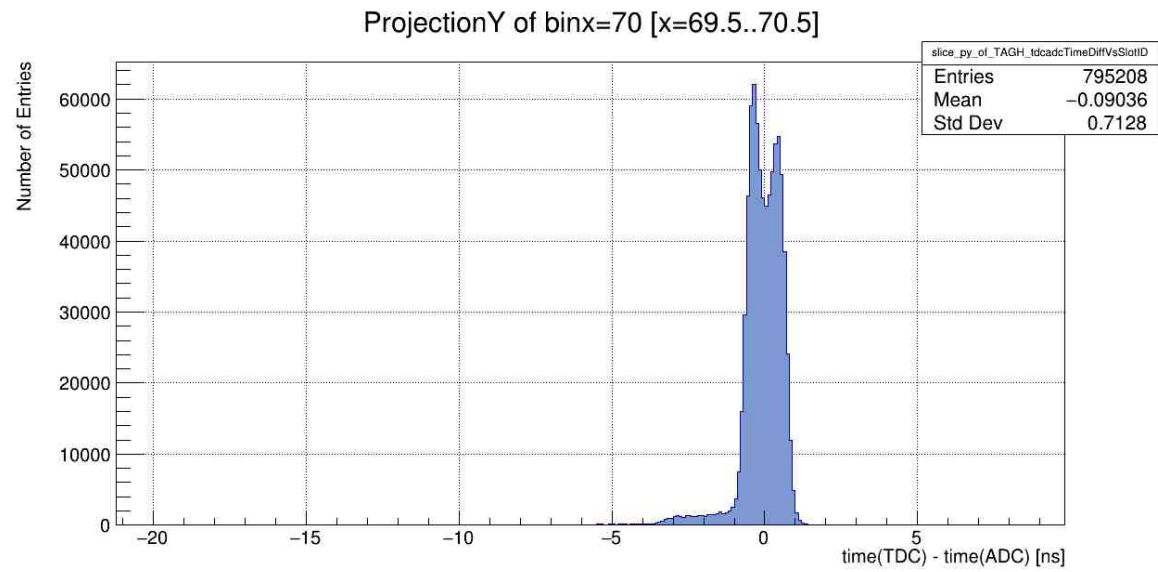
After Calibration

ProjectionY of binx=6 [x=5.5..6.5]

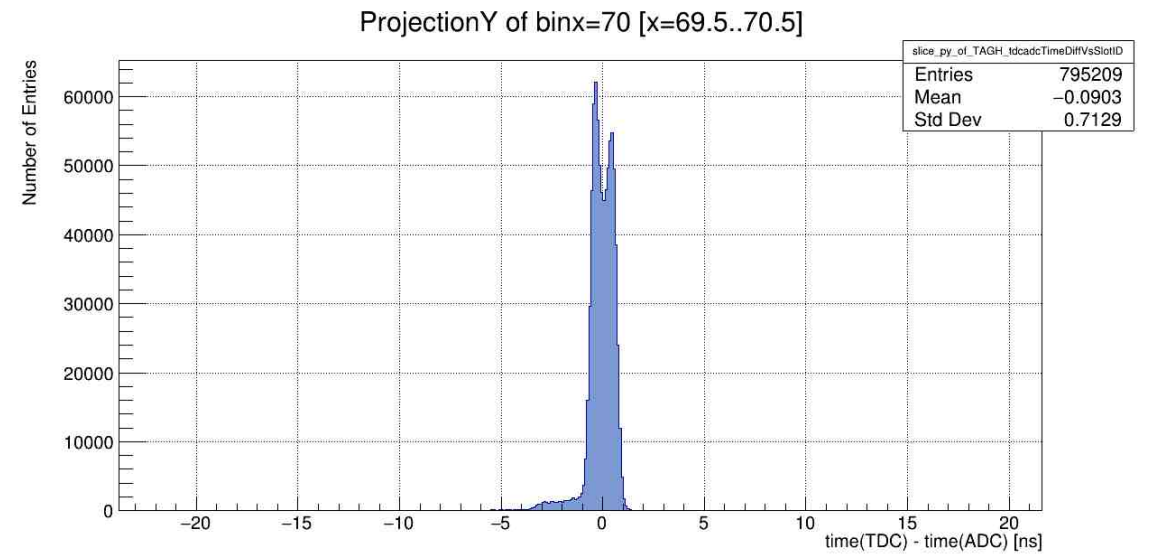


# TAGH TDC-ADC ALIGNMENT

Before Calibration

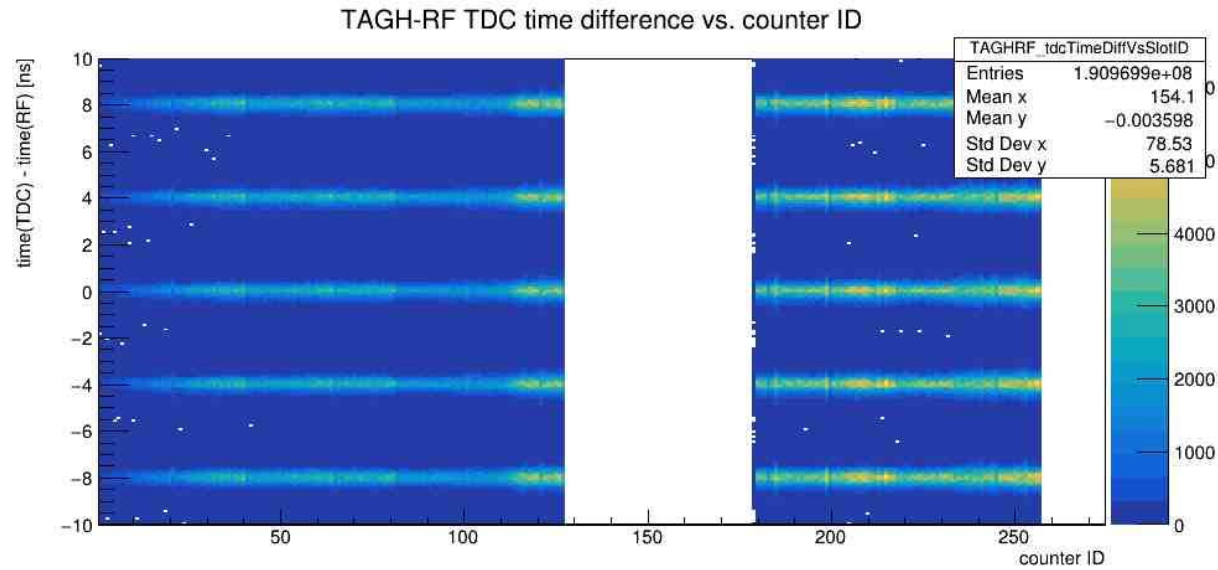


After Calibration

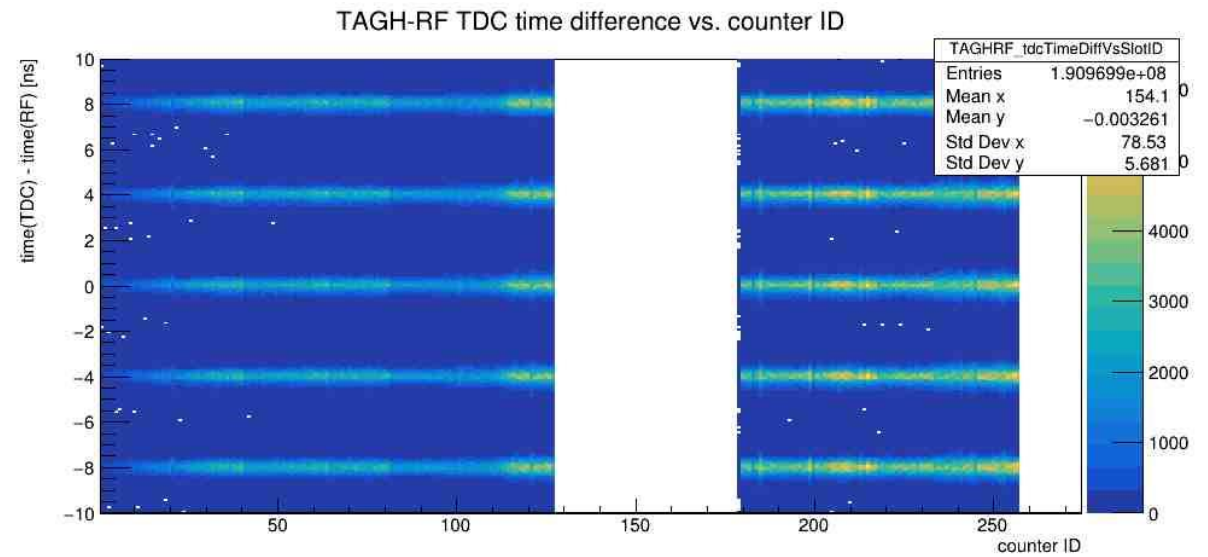


# TAGH TIMEWAIK CORRECTION

Before Calibration



After Calibration



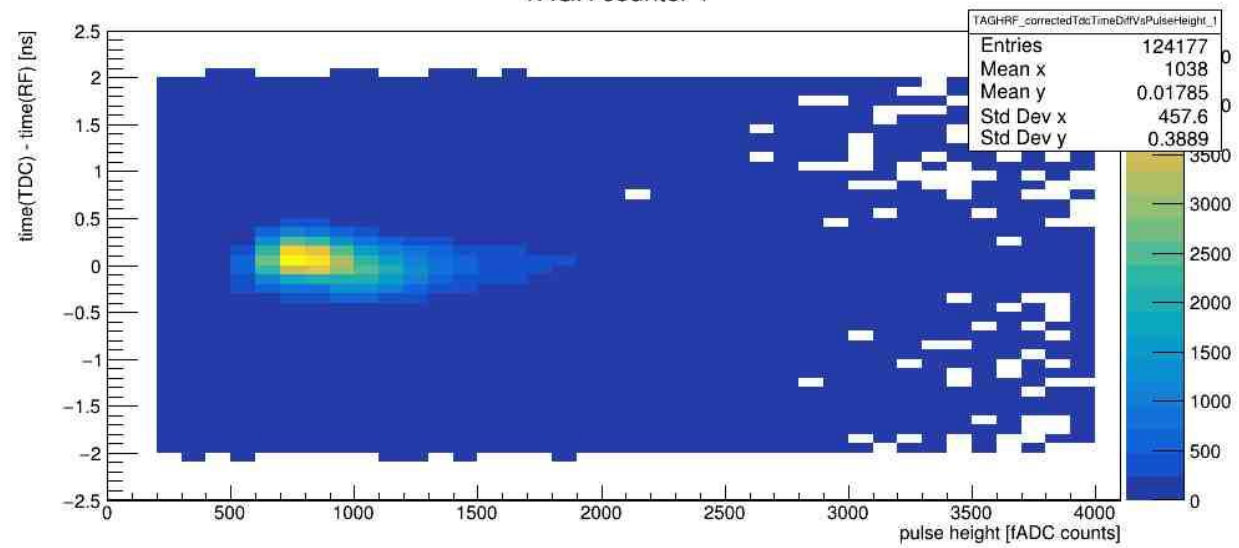
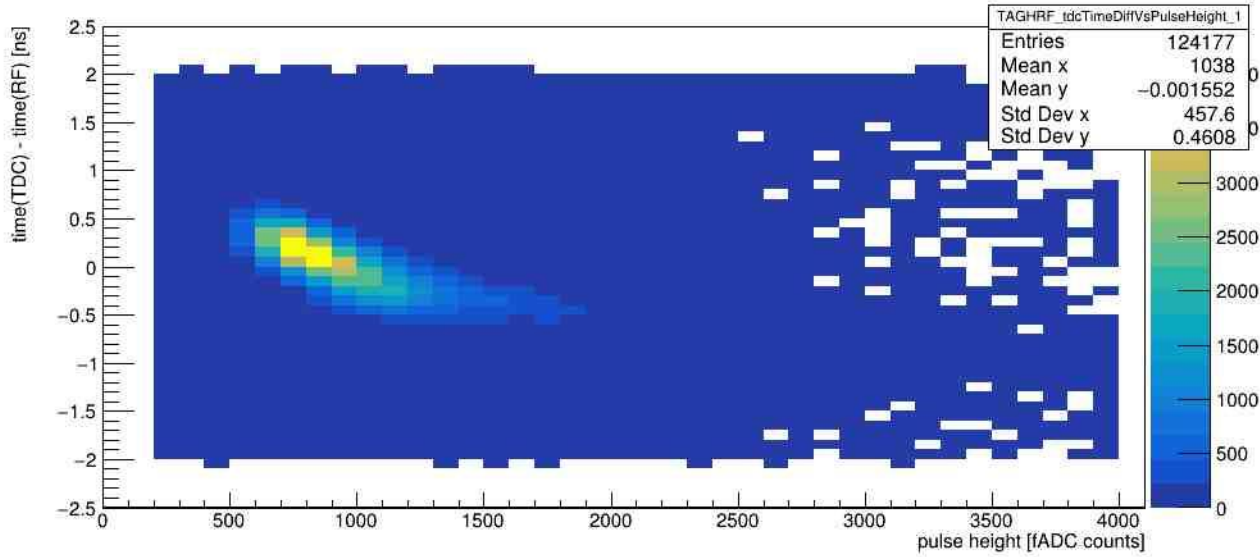
# TAGH TIMEWALK CORRECTION

Before Any Calibration

After automated Calibration

TAGH counter 1

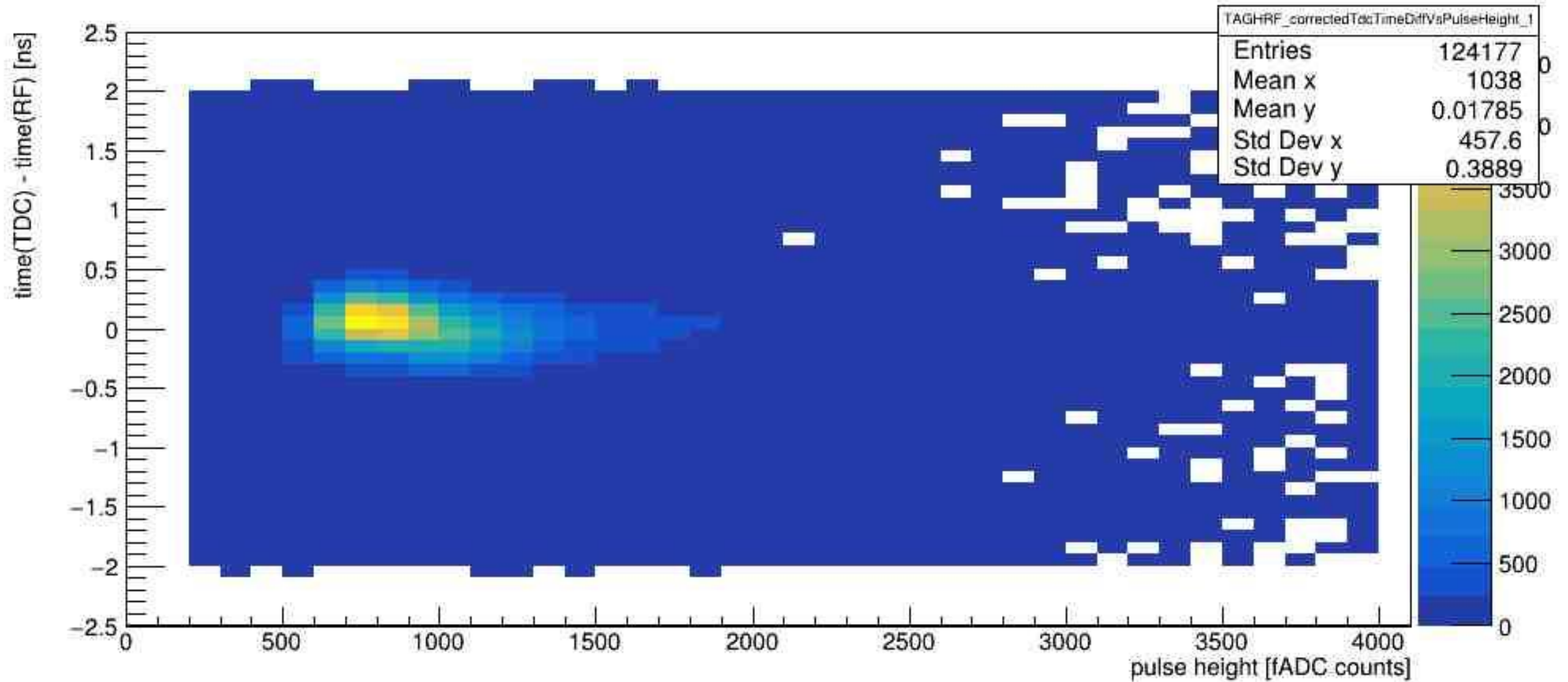
TAGH counter 1





# TAGH TIMEWALK CORRECTION

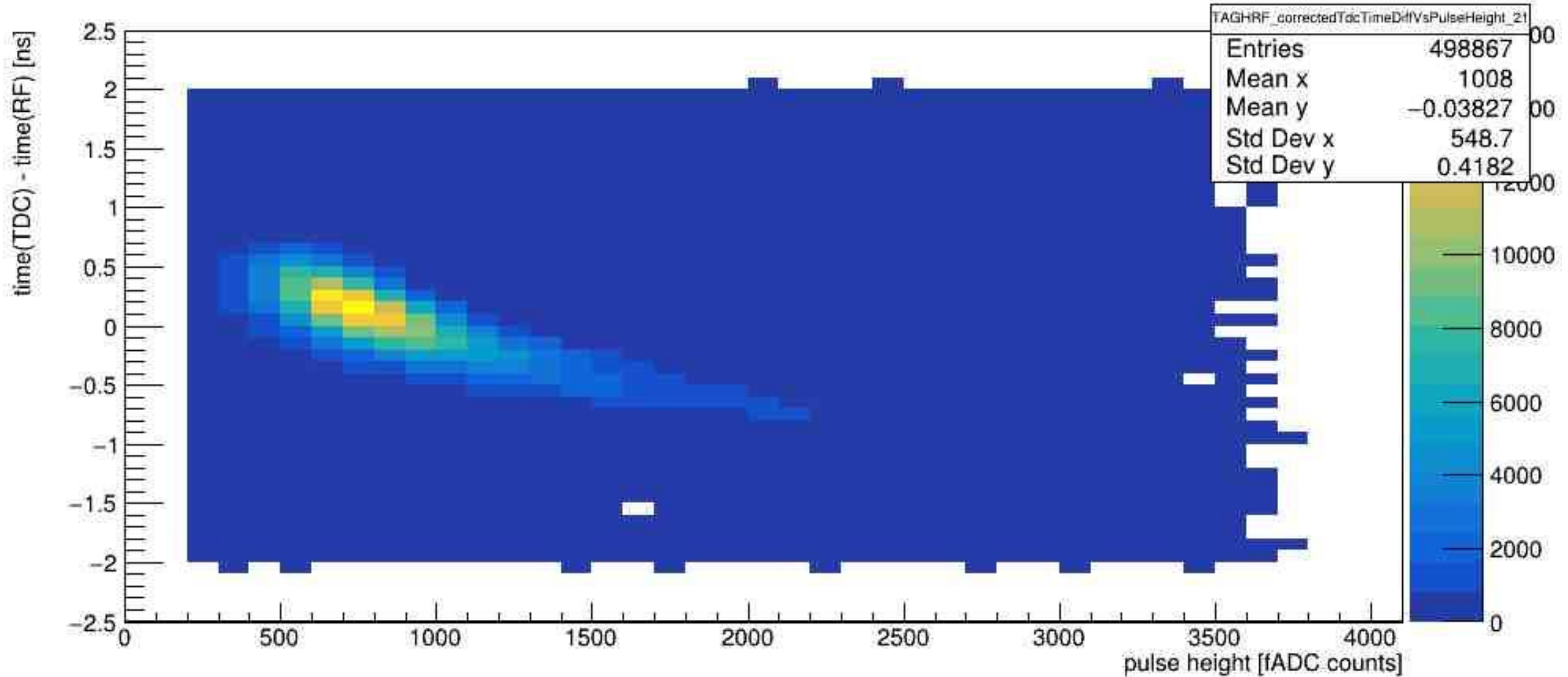
TAGH counter 1





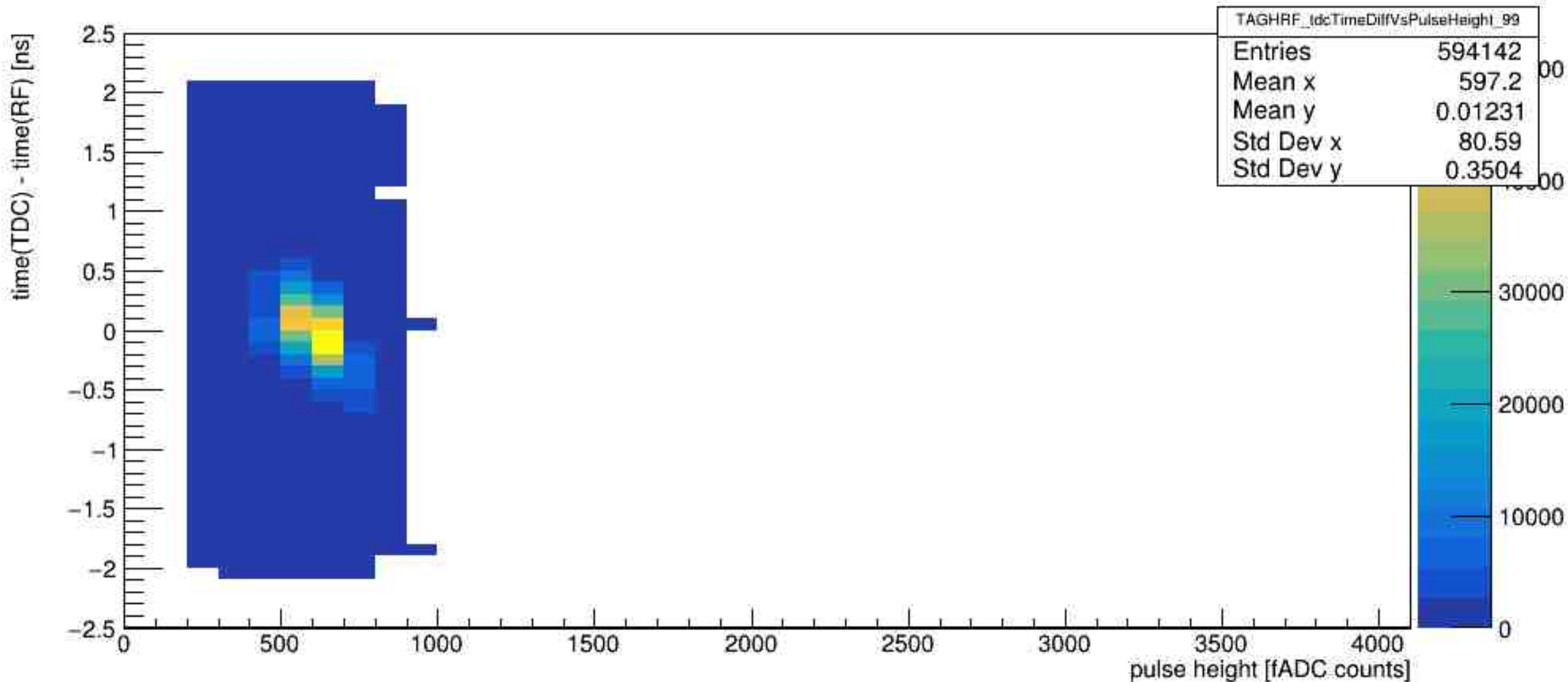
# TAGH TIMEWALK CORRECTION

TAGH counter 21



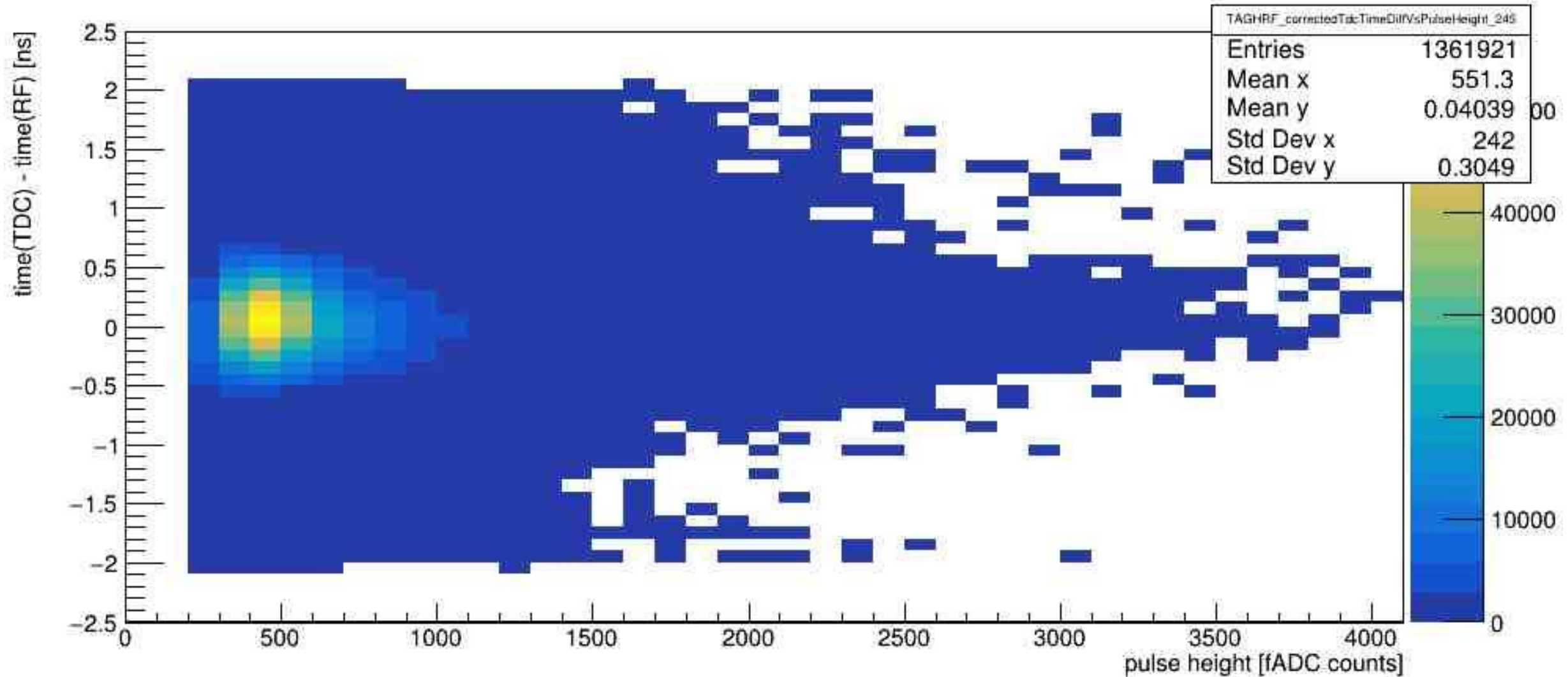
# TAGH TIMEWALK CORRECTION

TAGH counter 99



# TAGH TIMEWALK CORRECTION

TAGH counter 245



# SUMMARY