

MWPC Electronics Update 6/16/17

- Circuit board designs are finalized with updates after large prototype testing
- Ready to send boards out for fabrication and assembly – need to know final number of MWPCs to build
- This is Bobby's last meeting; information regarding PCBs is being transferred to Alex

Design changes for final designs

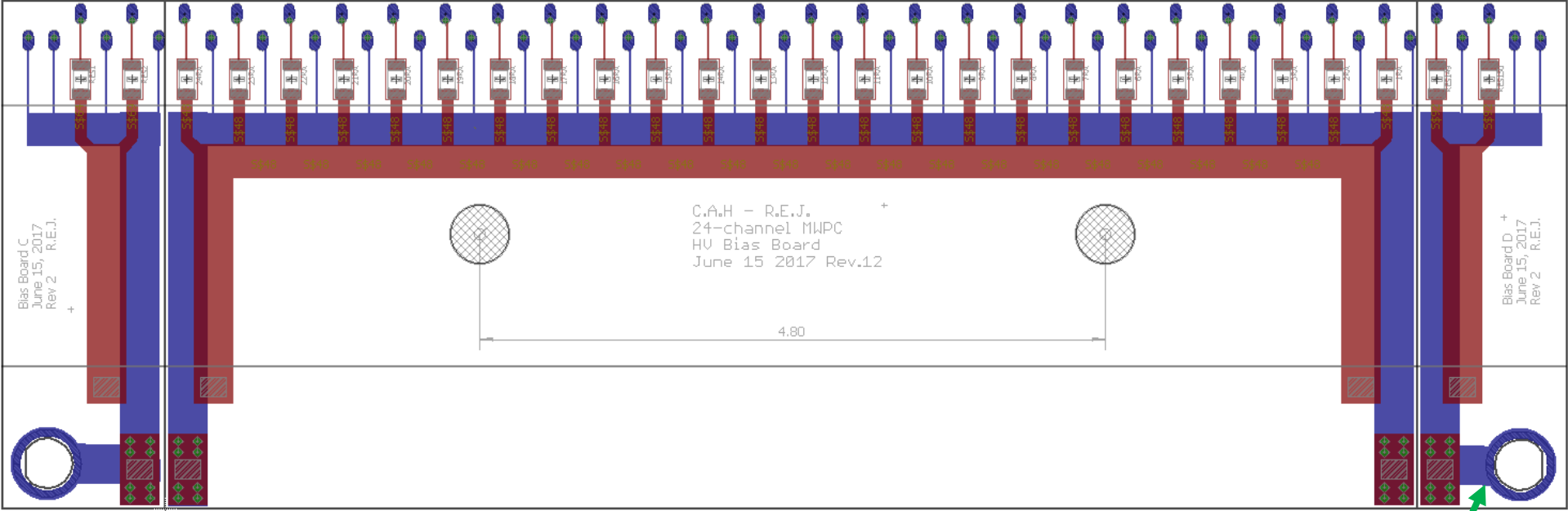
Pre-Amp Side

- Increased length of board by ½” to improve clearance between capacitors and aluminum plate edge
- Increased width of wire pads by 30% to make wire stringing easier
- Shifted pad spacing to accommodate this change in wire pad width, changed width of small end boards accordingly to maintain pad position
- Removed resistor across transformer inputs on pulse circuit – this component wasn’t doing anything helpful
- Included labeling on underside of boards for ease of use

HV-Bias Side

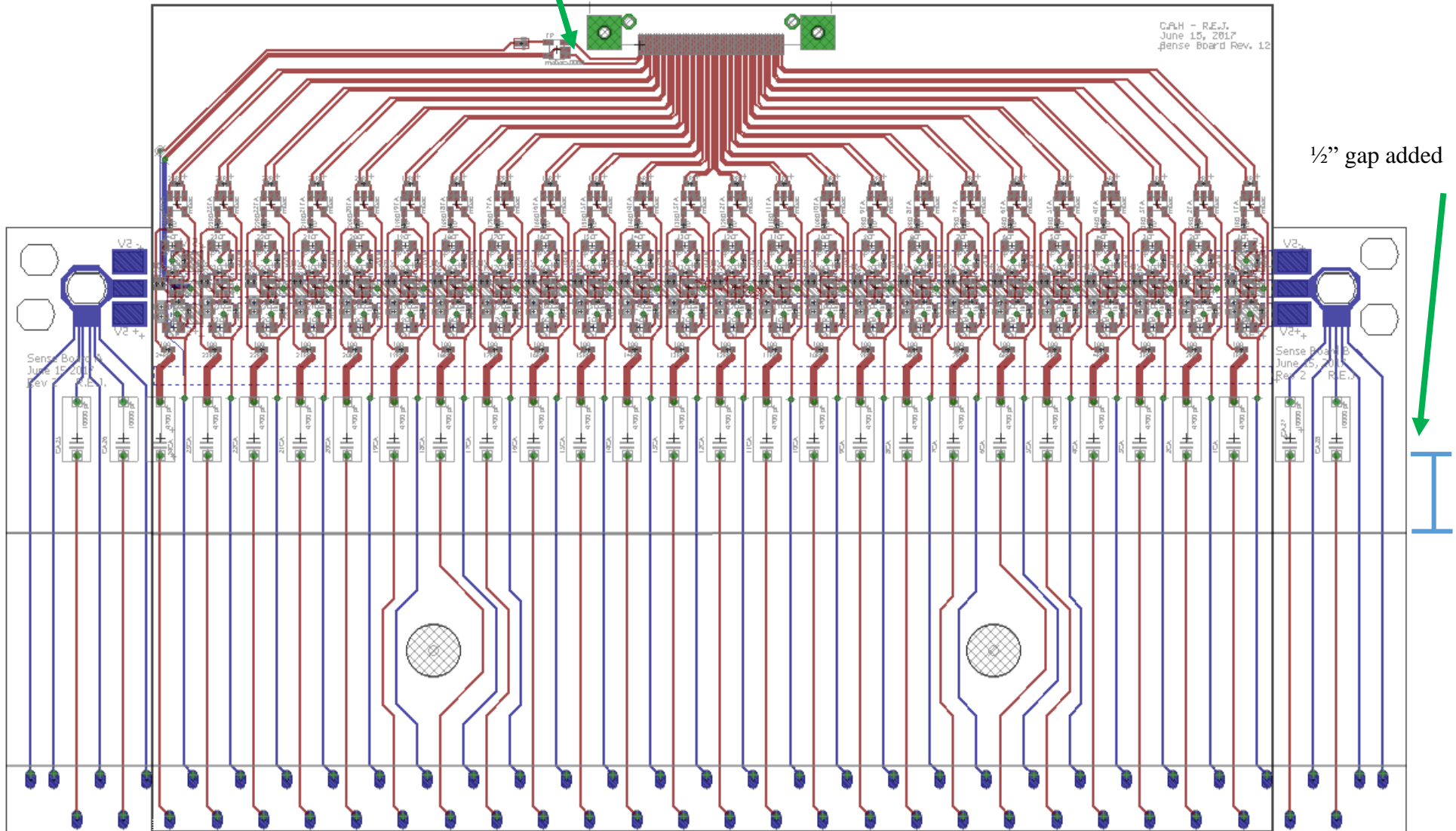
- Shifted pads to match pre-amp side
- Added SHV jack to small end board so both sides of detector have HV attachment

Final Designs



SHV Jack Added

Removed 100 Ω resistor



Wire pads: width increased and position shifted