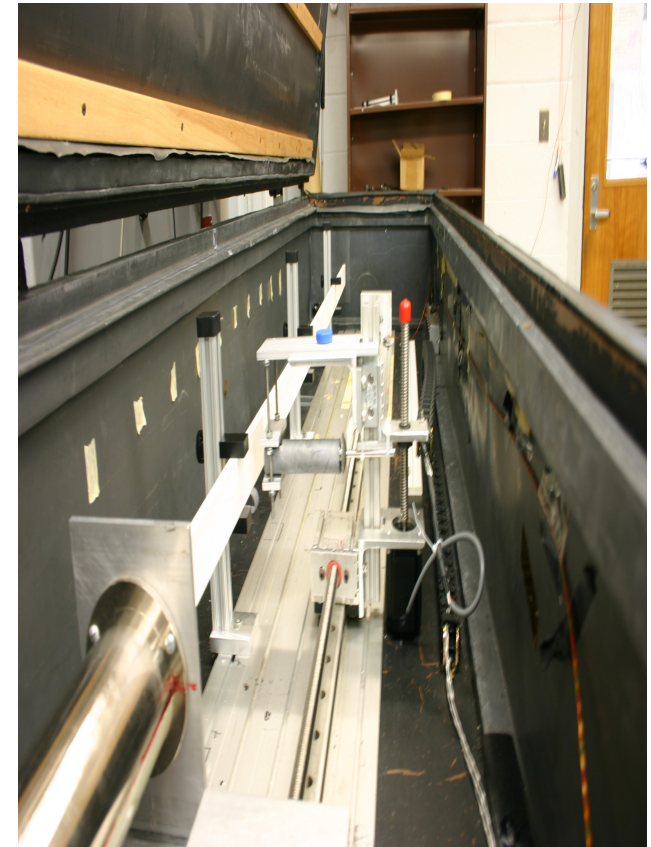
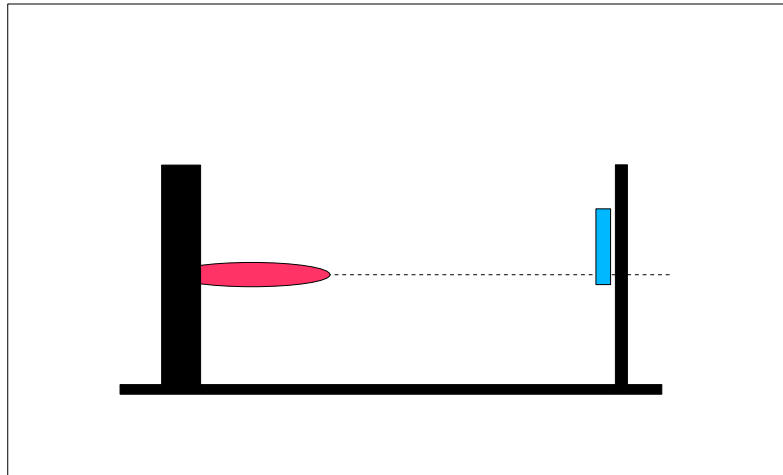


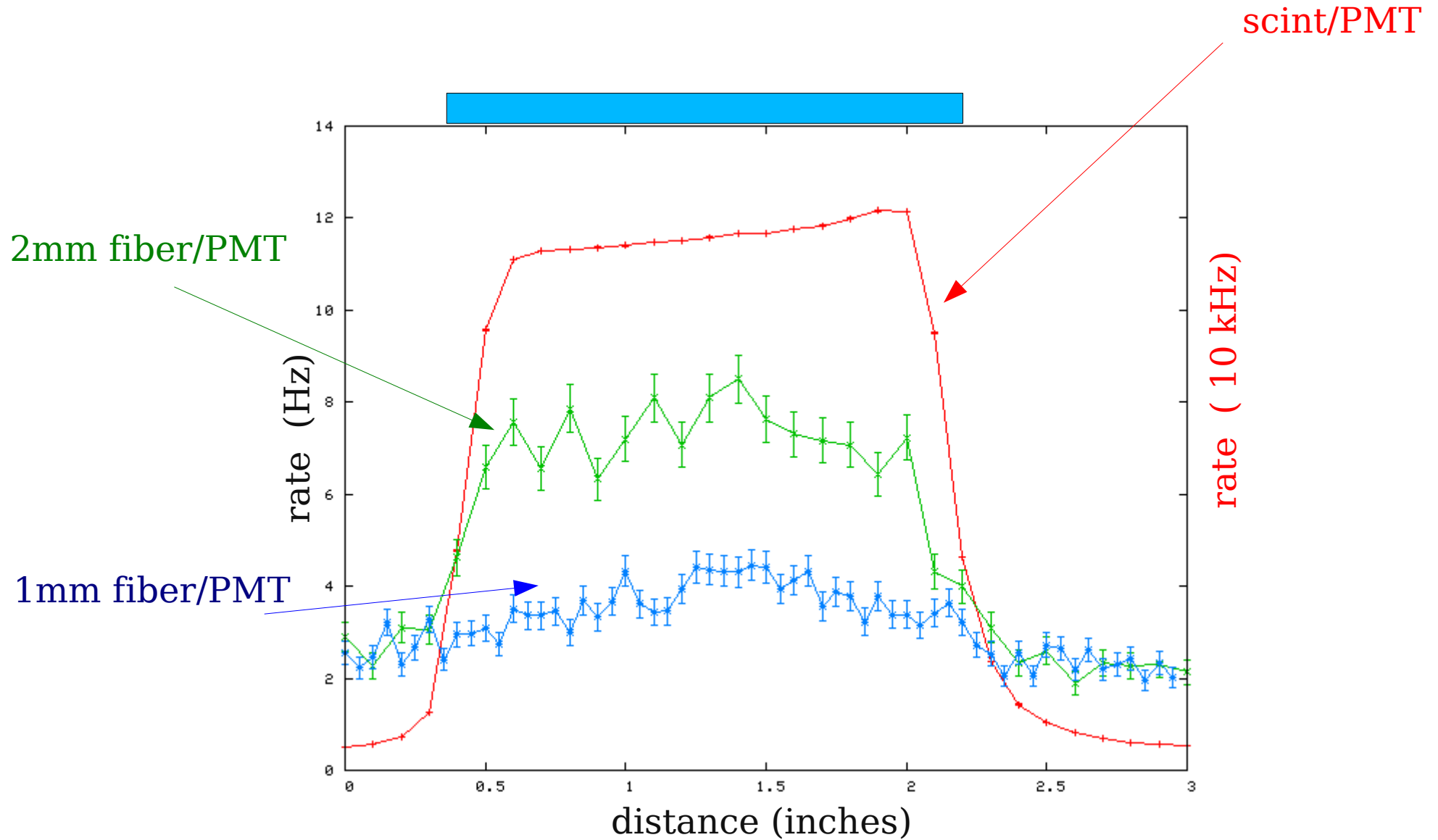
UPV Wavelength shifting fiber studies in progress

- Determine optimal WLS fiber
 - fiber diameter: 1mm vs 2mm
 - number of fibers per strip
 - BCF91A green vs BCF92 fast green
 - single clad vs multi clad



^{90}Sr source
longitudinal and
transverse
movement

Profile scan



ADC Spectra

