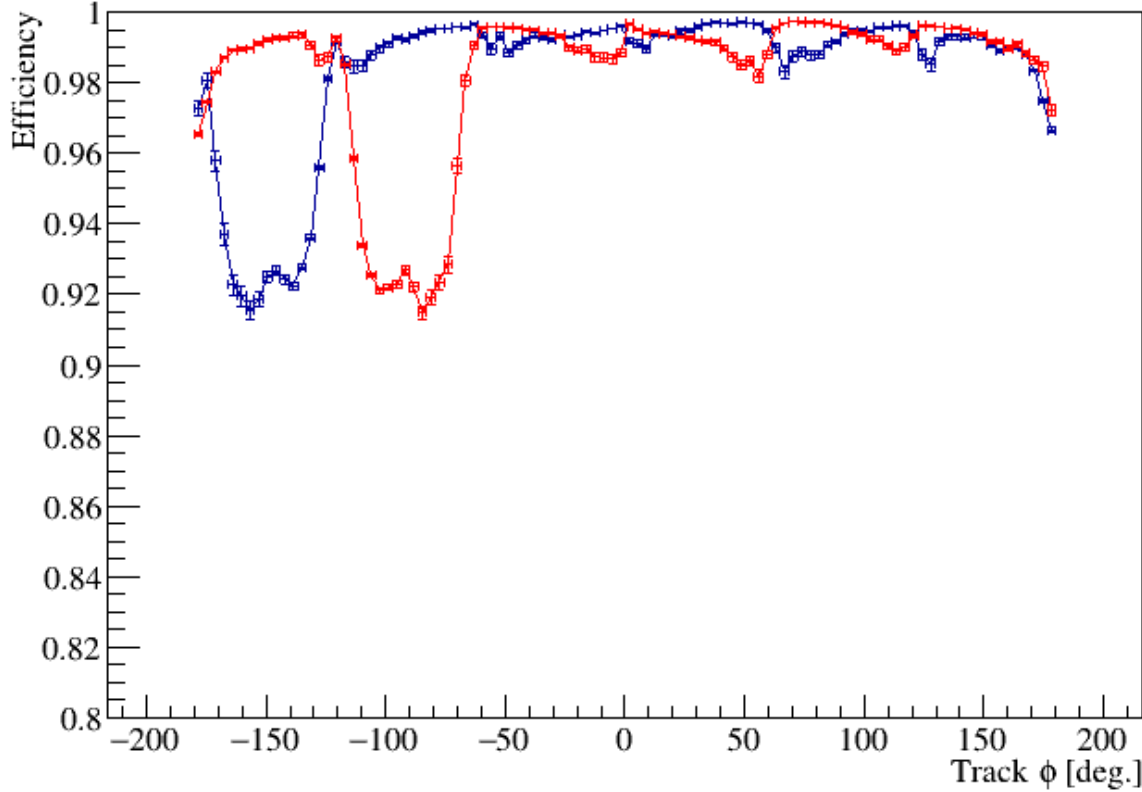
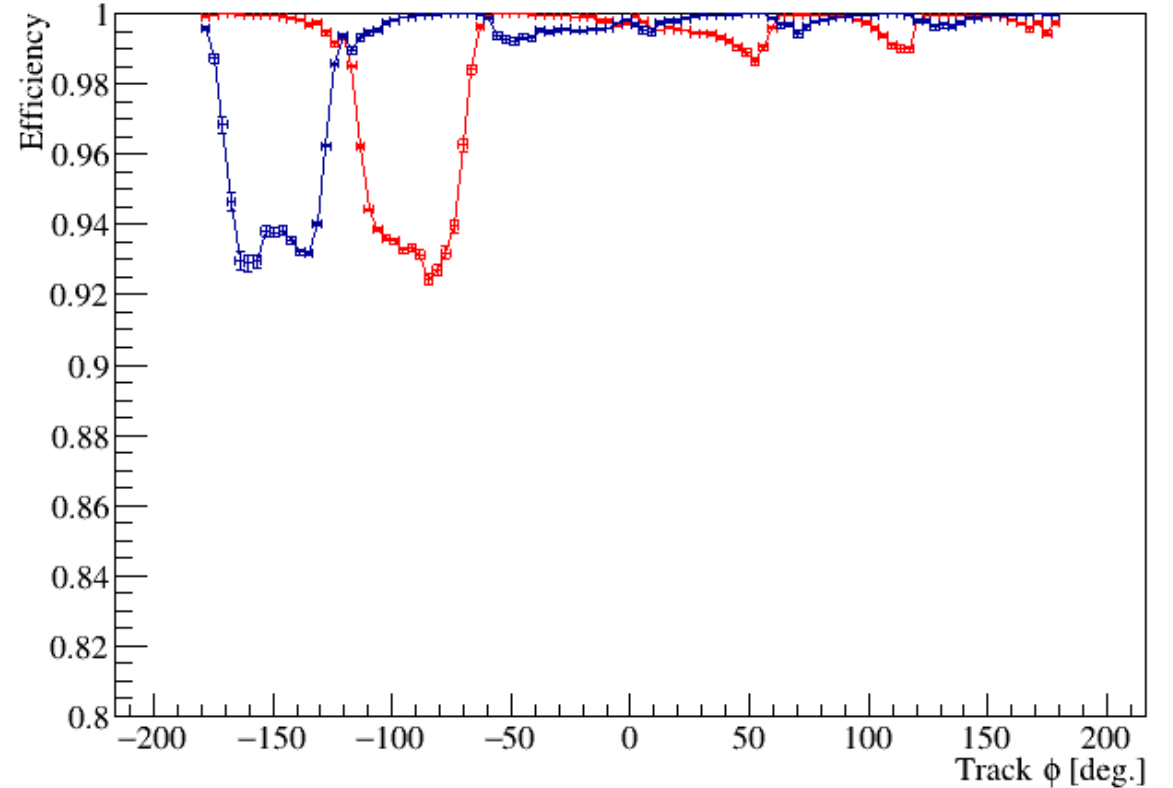


FDC Efficiency: Data-MC comparison revisited

FDC Per Wire Efficiency: positive (red) and negative (blue) tracks

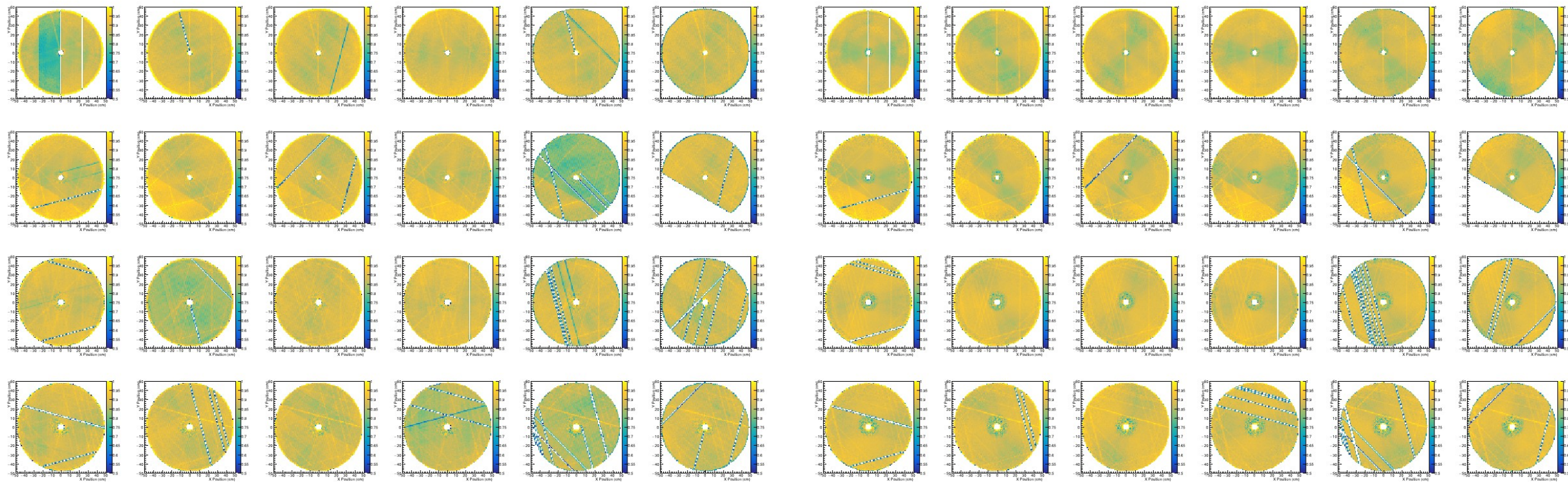


FDC Per Wire Efficiency: positive (red) and negative (blue) tracks BGEN



Tracking Meeting 1/7/21

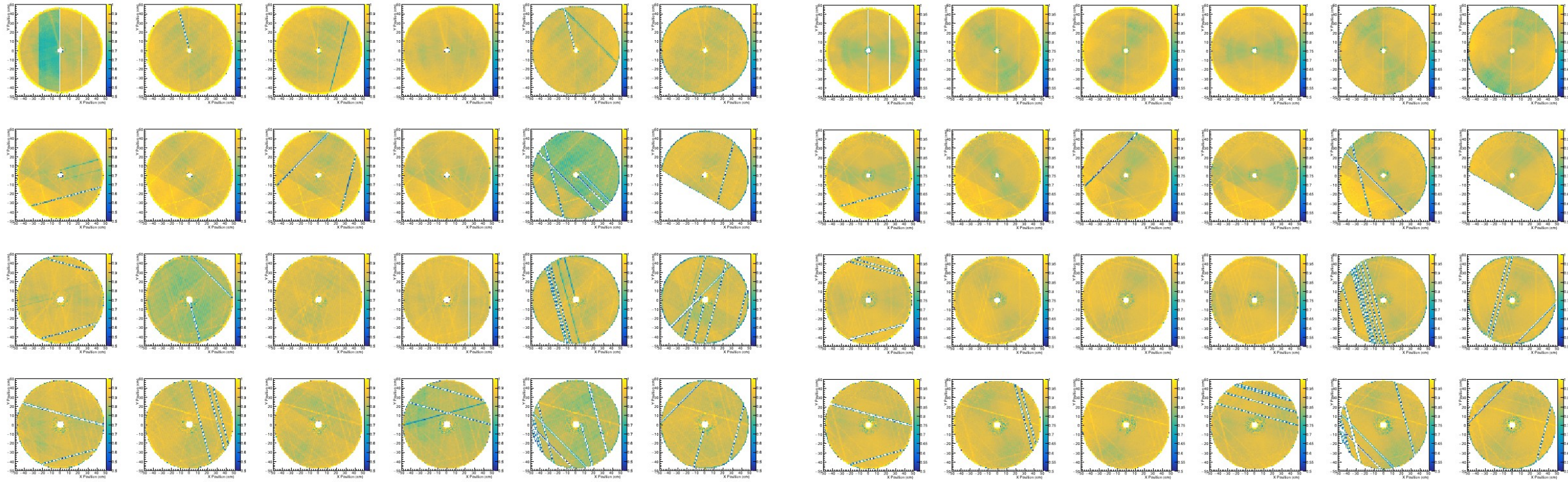
Pseudo-Hit Efficiency (negative tracks)



Amorphous Run 30739

BGGEN MC (all runs)

Pseudo-Hit Efficiency (positive tracks)

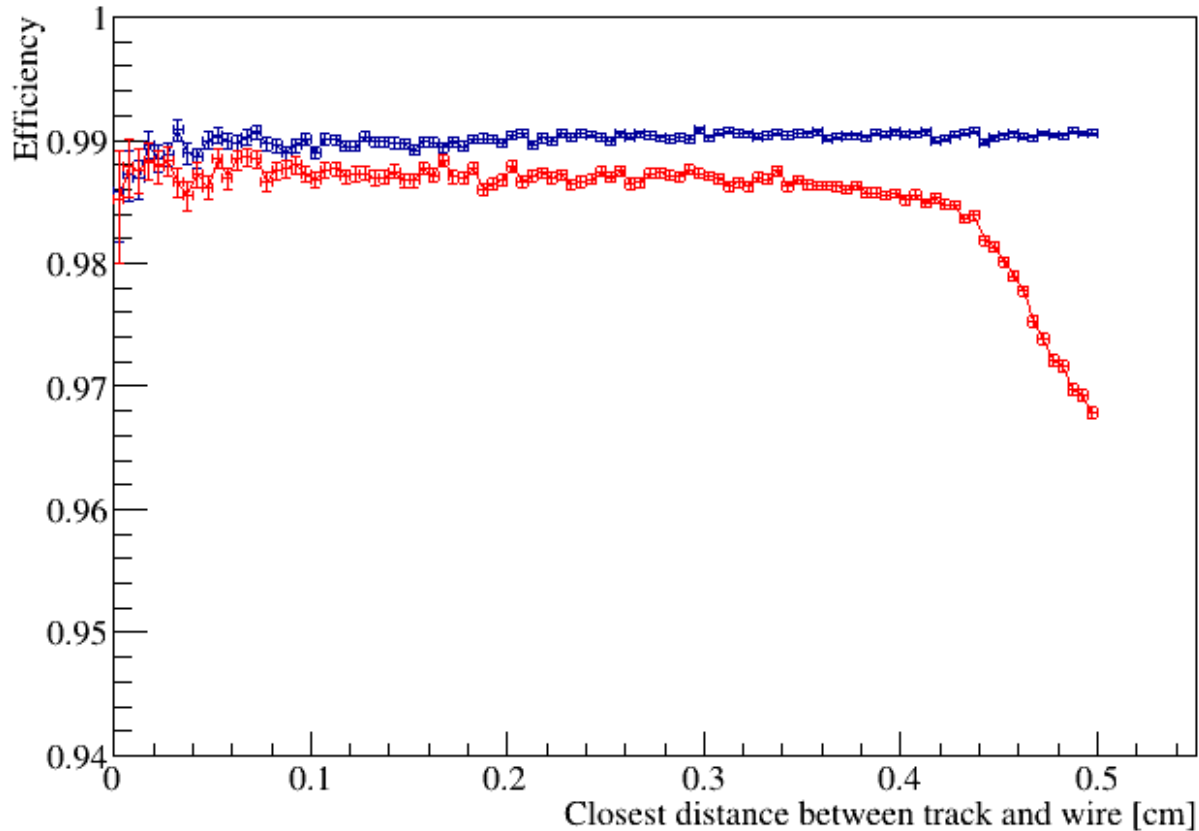


Amorphous Run 30739

BGGEN MC (all runs)

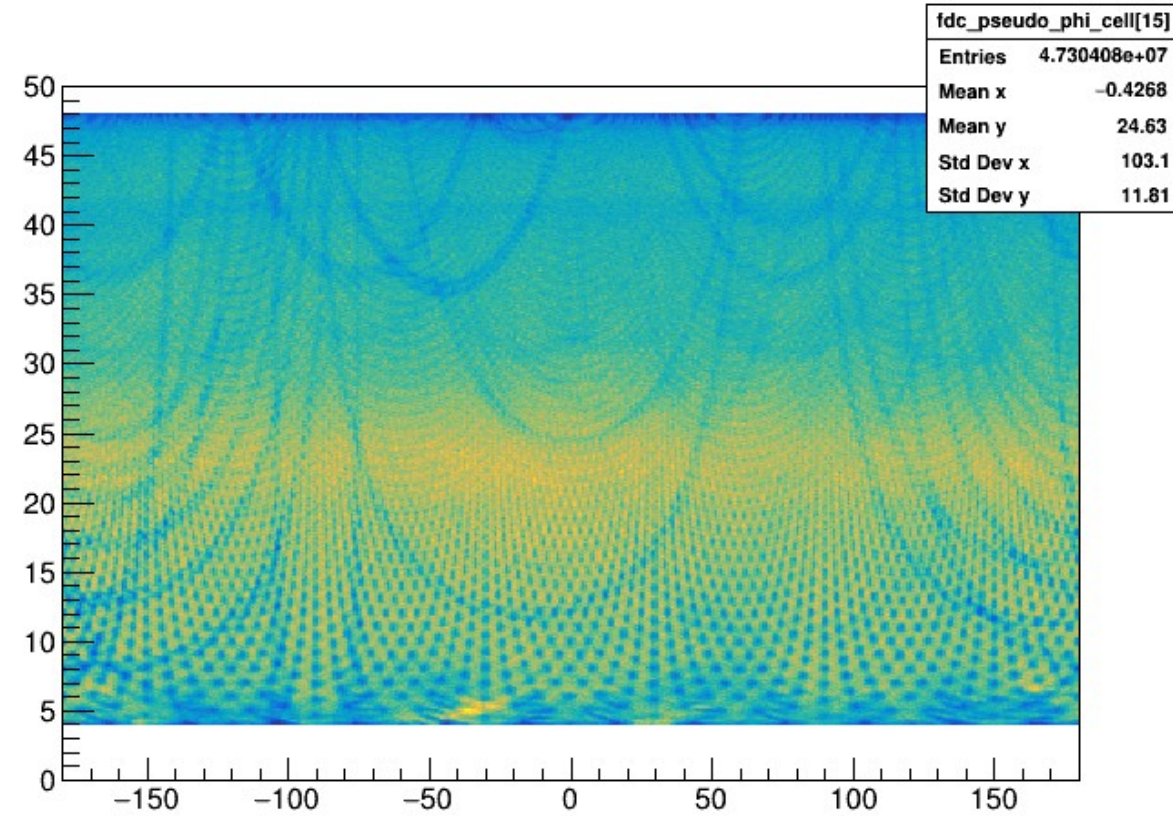
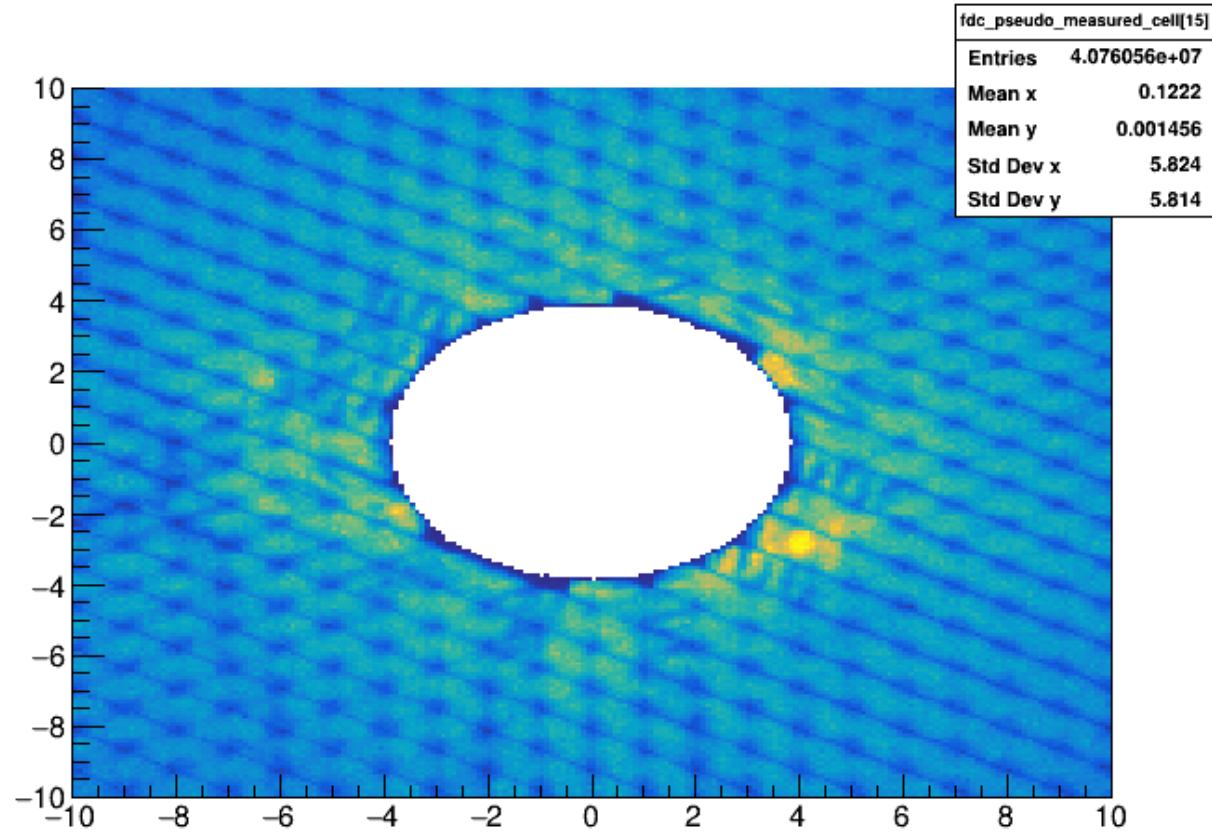
FDC Wire Efficiency vs Track position wrt wire

FDC Per Wire Efficiency Vs. DOCA: data (red) and bggen MC (blue)

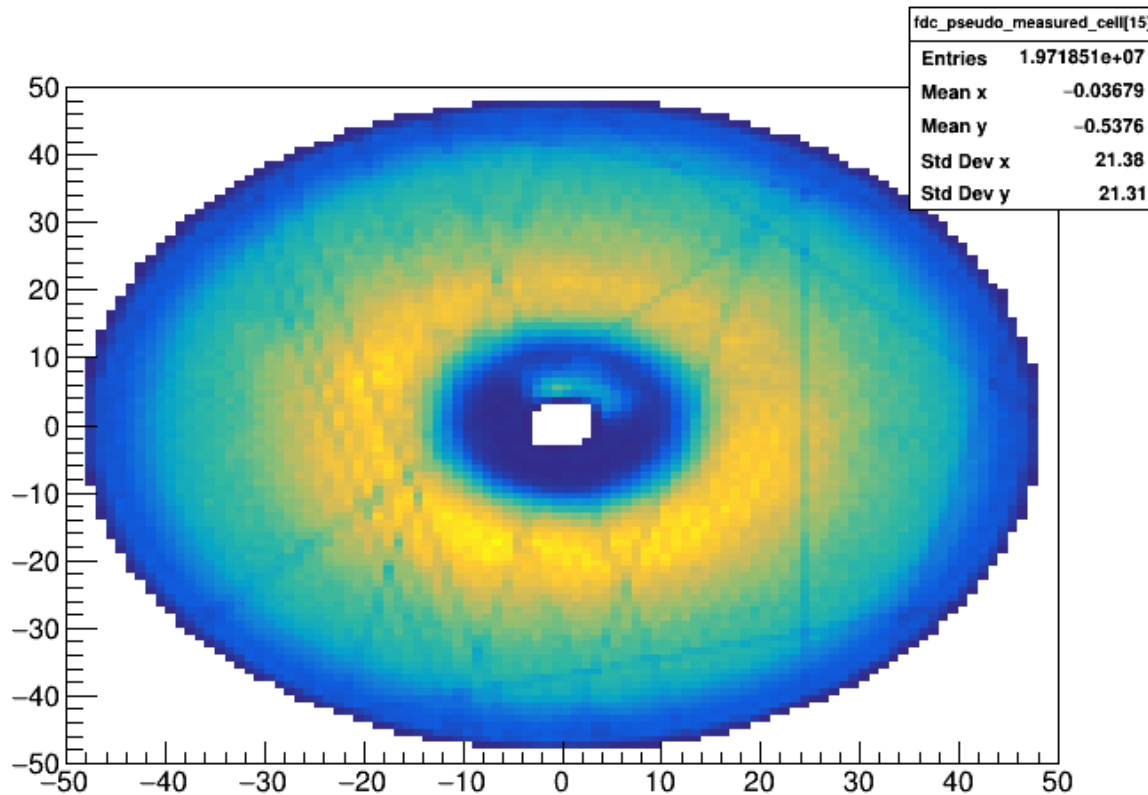


- Minor dependence on drift length
- Drop at the end probably due to resolution of track and cell position
- Effect much larger without tight track selection used here

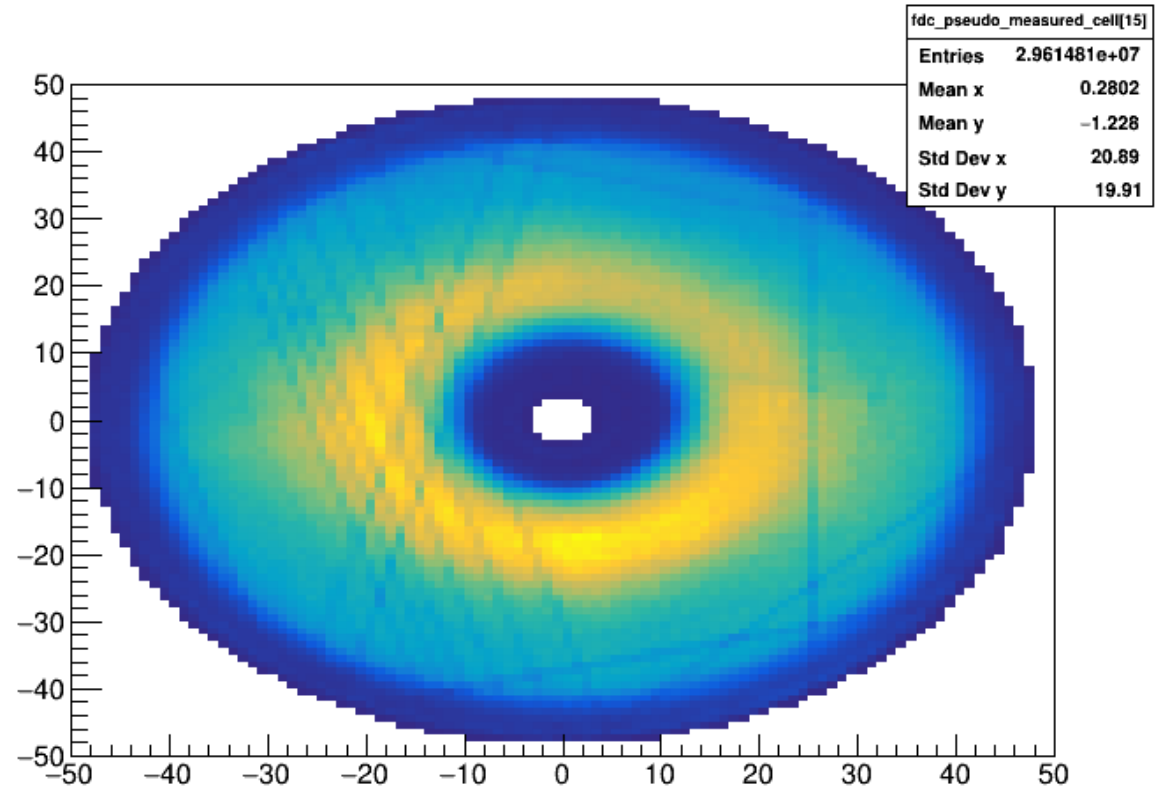
Ultimately responsible for 30deg modulation



More mysteries: distribution of tracks



Amorphous Run 30739



BGGEN MC (all runs)

- Tracks close to beam hole?
- Position of hole wrt chamber?