

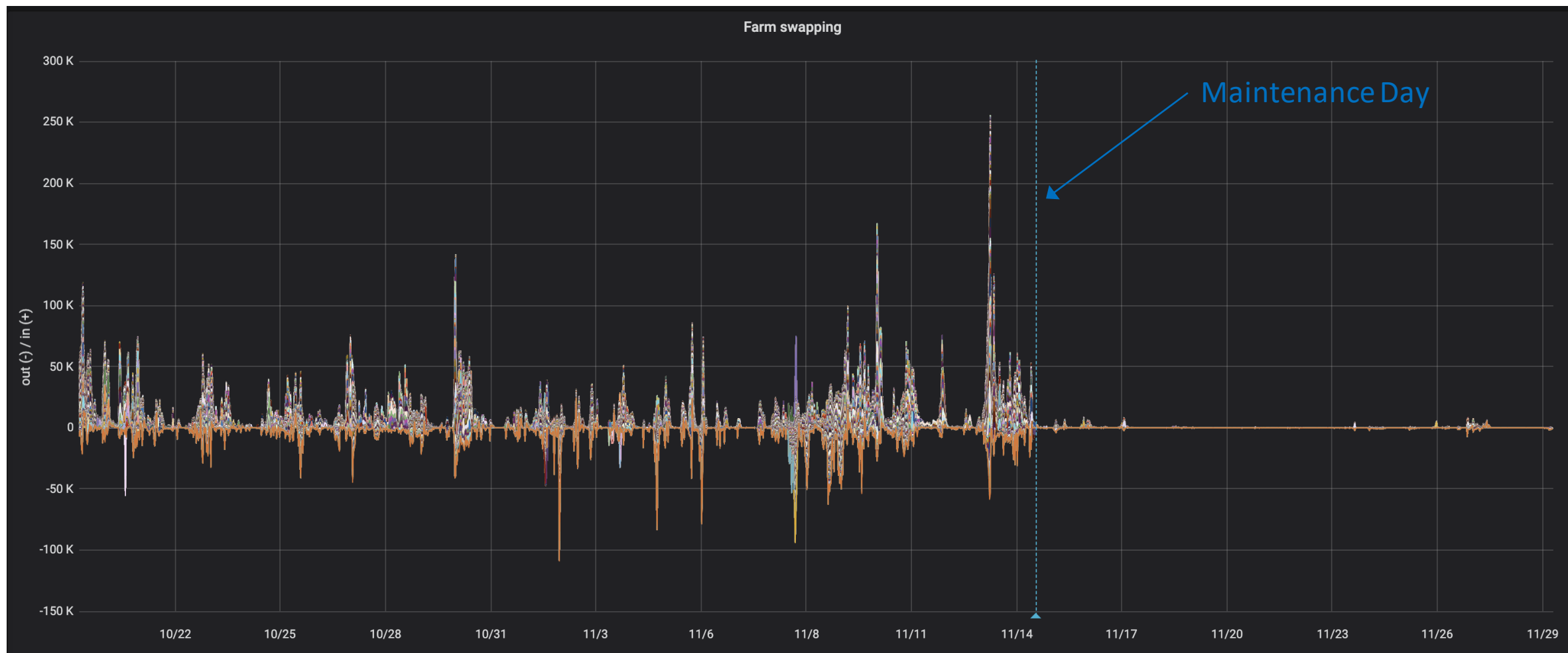
# SciOps+ENP December 2022 Meeting

Bryan Hess

Friday, December 2, 2022

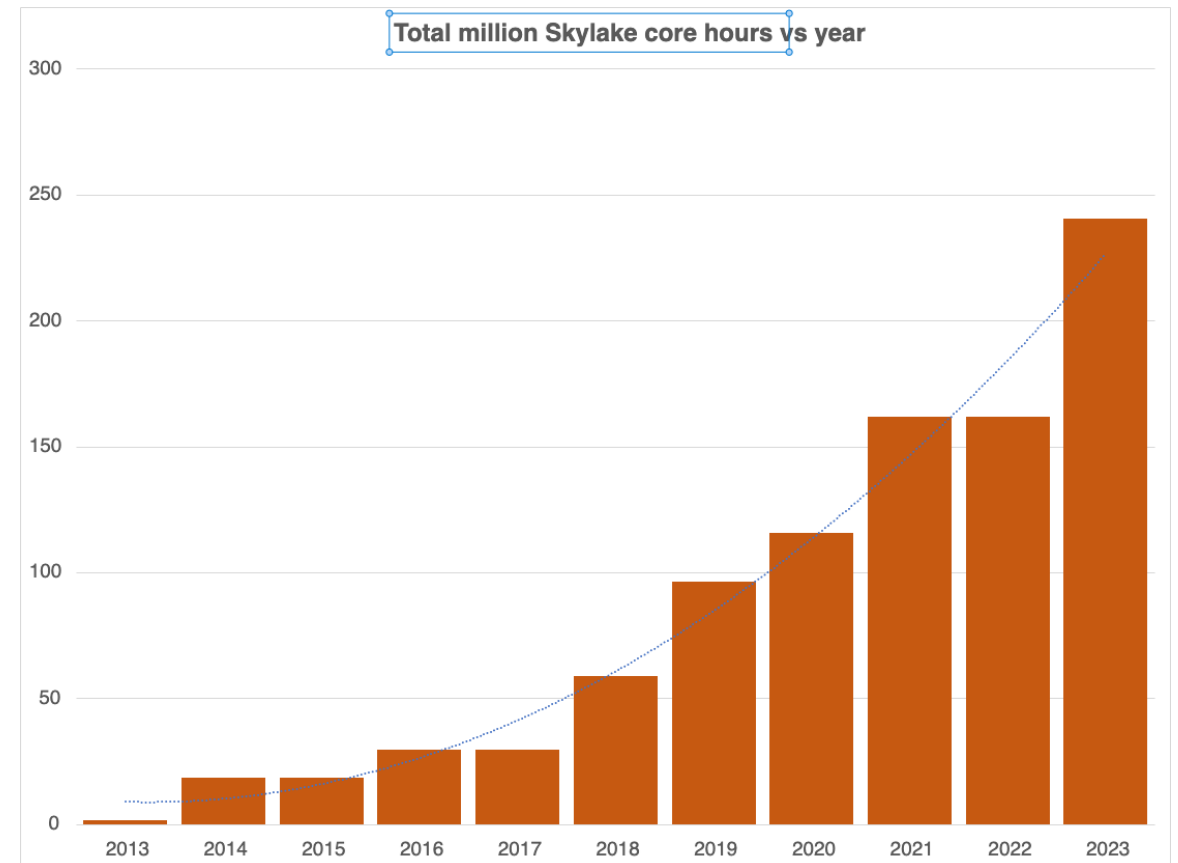


# Swapping stopped with CGgroup OOM killer in Slurm



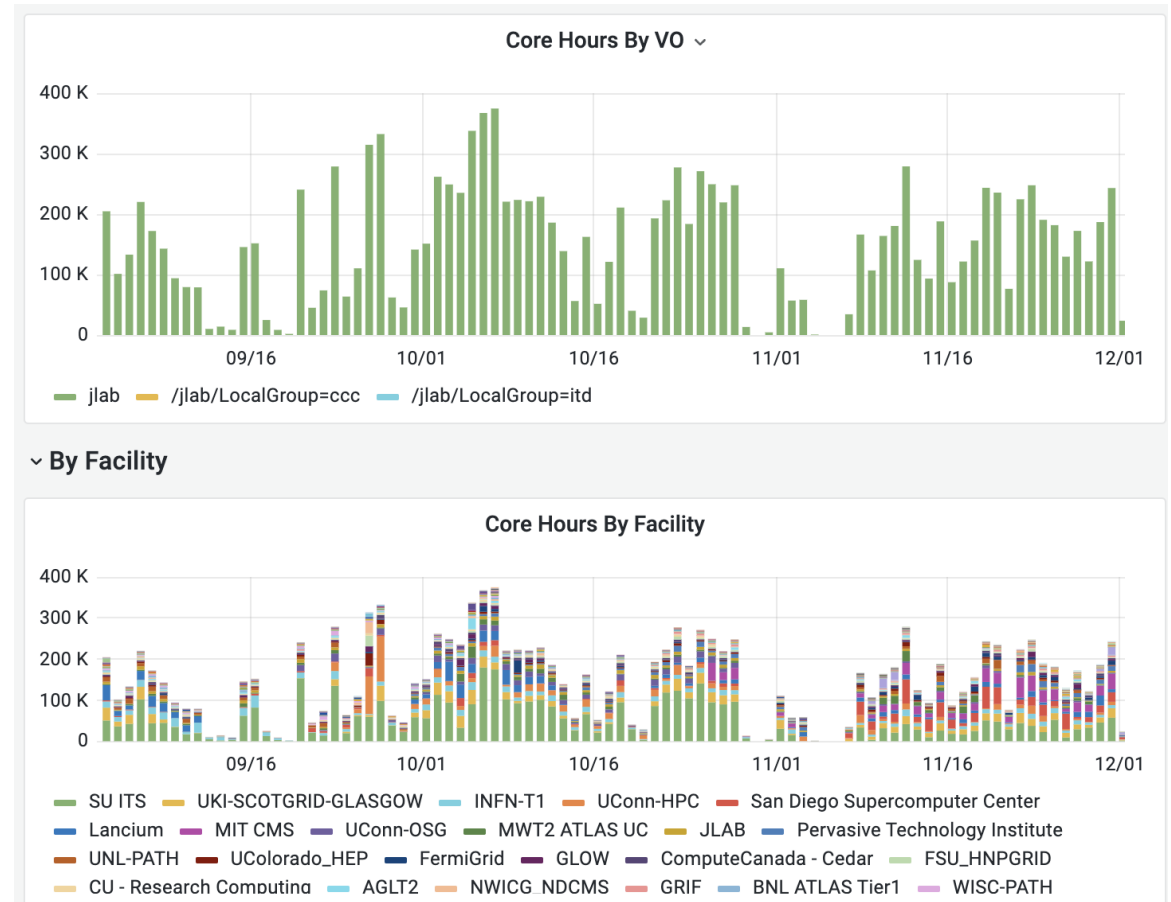
# Farm23 node procurement progress – Capacity Projection

- Farm23 Nodes have arrived
- Will be racked soon
- Awaiting some networking equipment
- Will initially run CentOS 7.9, become part of production
- This will bring the farm to 240MCH/year in Skylake core hour (farm18) equivalents
- Farm13 has been retired



# Open Science Grid

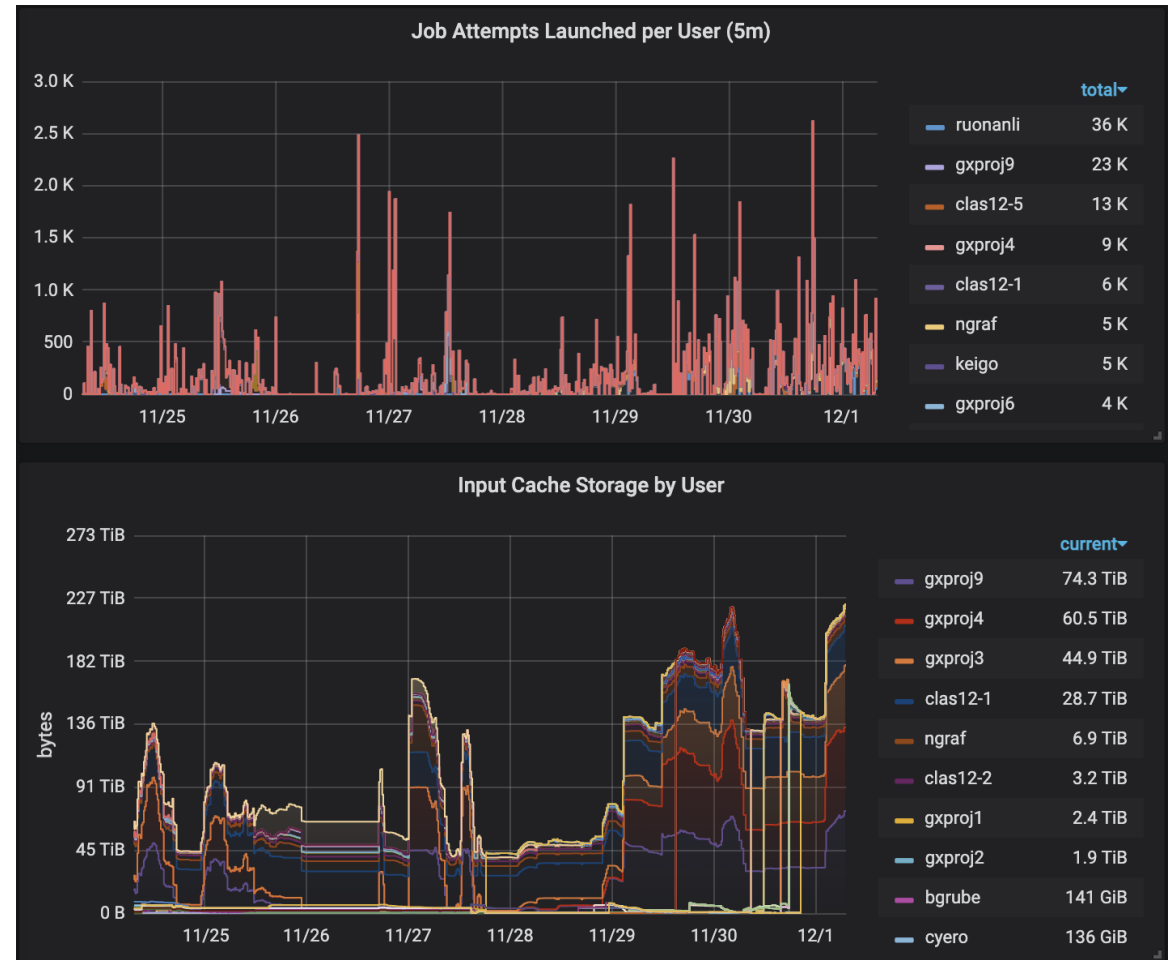
- Steady use of the OSG continues
- No operational issues this month
- XRootD direct writes to select /work
  - MCWrapper testing
  - EIC writing is next up (config in progress)



# SWIF – Changes and Updates

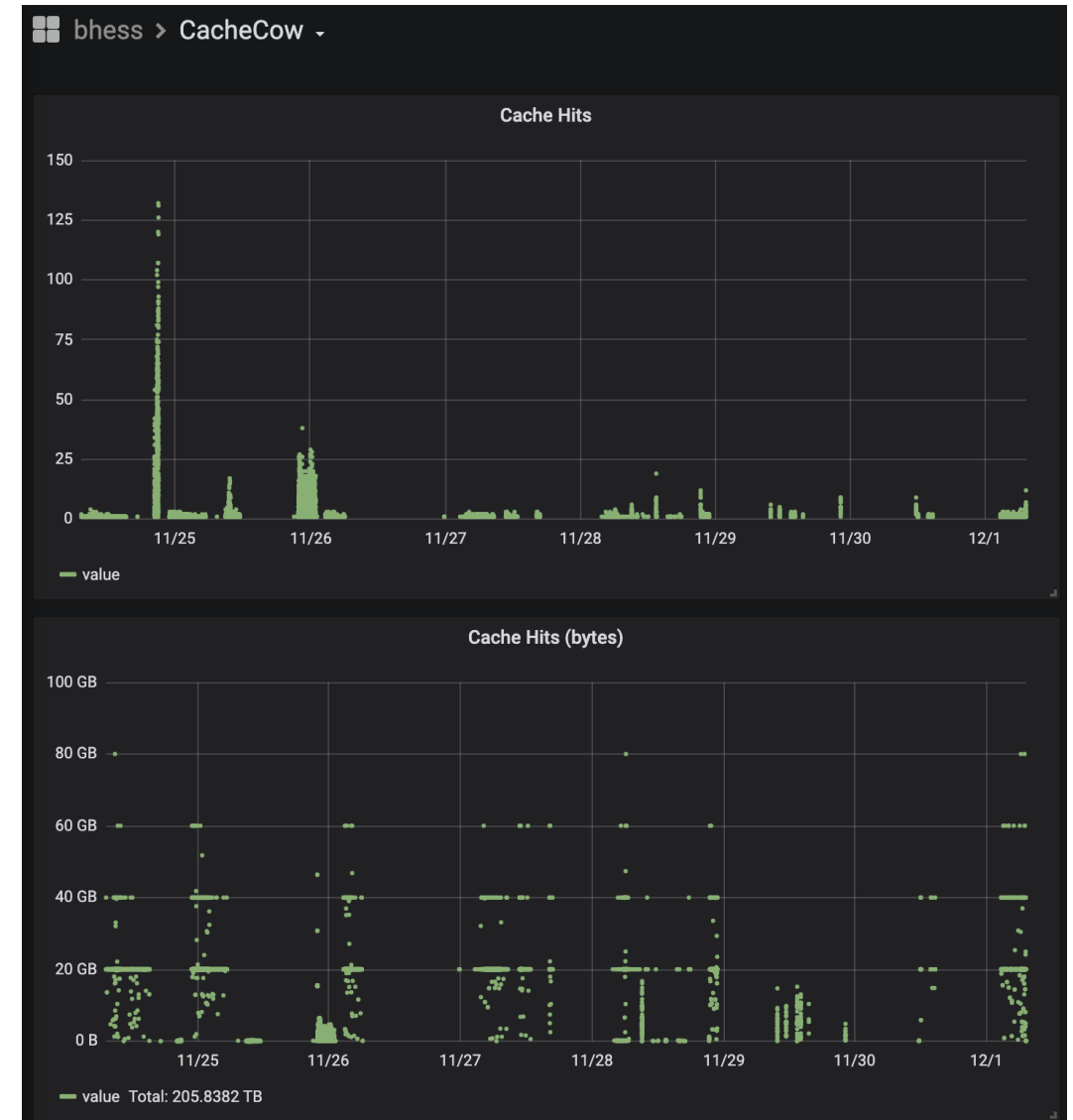
- Added -refresh-input flag for retry-jobs to purge cached inputs
- Fixed bug where server shutdown could cause an output file partially extracted from tar archive to be treated as fully extracted, leading to truncated results.
- Improved concurrency, replacing daemon serial loops with thread pool worker queues
- Capture globus exception details (e.g. "consent required") to present to user
- Fixed bug where a non-tape file would not transfer off-site.
- Implemented new shell manager to cache per-user shells and better manage timeouts.
- Harvest swif diagnostic info from job to store in database
- Avoid race condition with ln -fs
- Fix read-only access for -user flag in swif list
- Upgraded from JDK 11 -> JDK 17
- Upgraded Jersey/Grizzly to latest version.
- Integrate with cache manager to coordinate file lifetime management
- Other miscellaneous bug fixes and tweaks.

## SWIF Job dispatch and data (1 week sample)



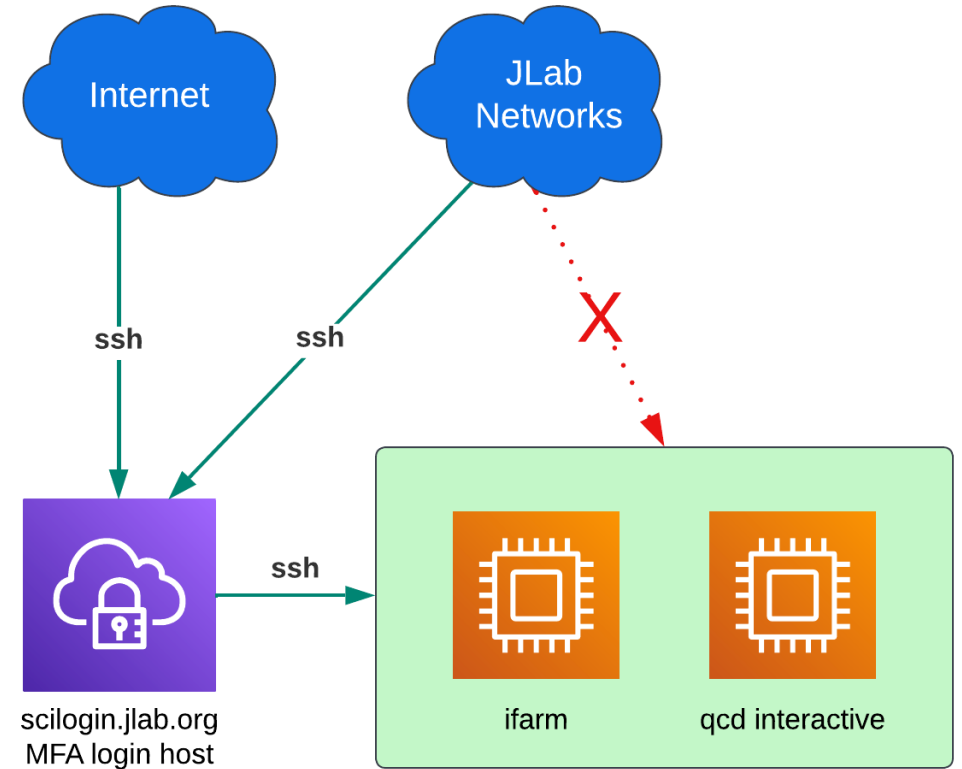
# Jasmine look-aside disk cache

- Distinct from the user-visible cache
- Policy driven, meant to improve performance in problematic cases
- Staging features and use cases into production gradually
  - small files
  - auto-cache for DAQ
  - disk store until duplicates are written
- Initial results are encouraging
- If you see volume 000000 on Jasmine web pages, that's a cache hit from the disk based "meta mover"
- disk storage is XRootD based.
- example: 200TB of cache hits this week.



# MFA For Scientific Computing

- March 21, 2023 – ssh using MFA gateway will be required
- Same model as hallgw for hall access
- scilogin.jlab.org VM pair being built
- Announcement email to users soon
- MFA credentials will be issued to all users with ifarm or qcdi access
- Supported MFA
  - Microsoft Authentication
  - Google Authenticator
  - MobilePass App
  - Yubikey hardware token
- Discussion: what are ssh key based uses on ifarm? What functionality is needed?



## Maintenance Activities for December 20, 2022

---

- No large changes planned before the Lab Shutdown
- Primary MAriaDB database server for Jasmine, SWIF
  - version update
- Routine security updates and reboots for all internet-facing services