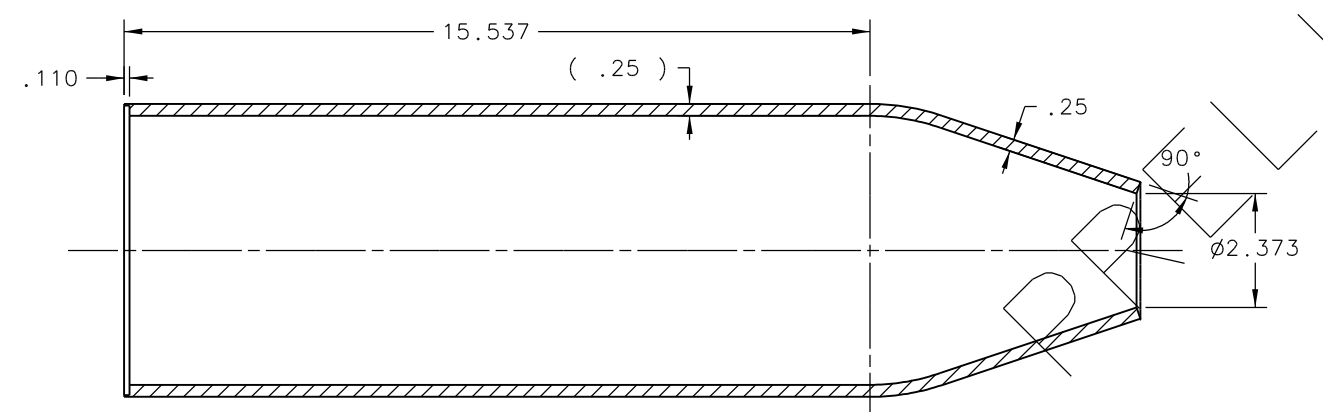
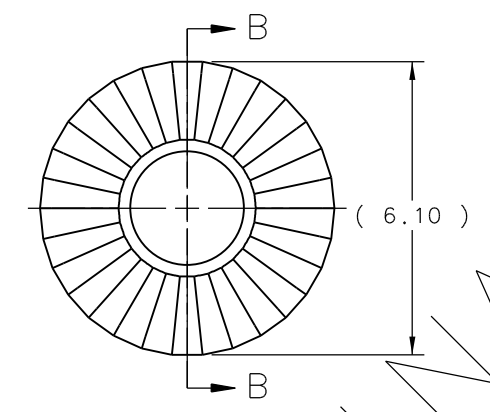
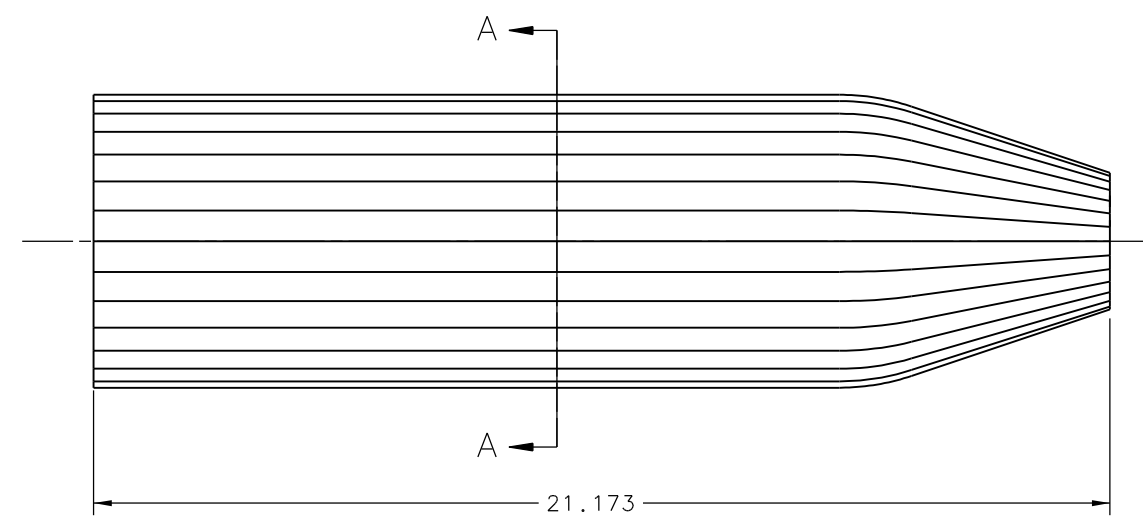
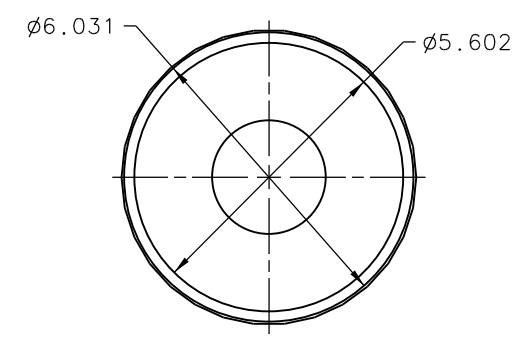
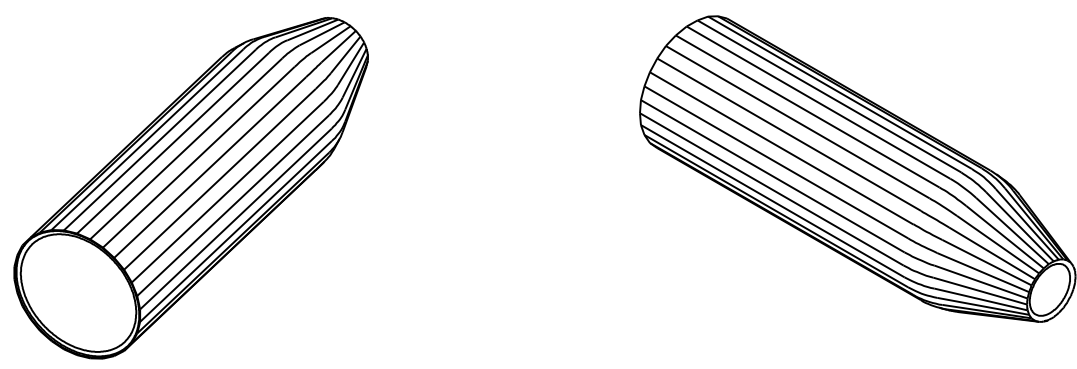


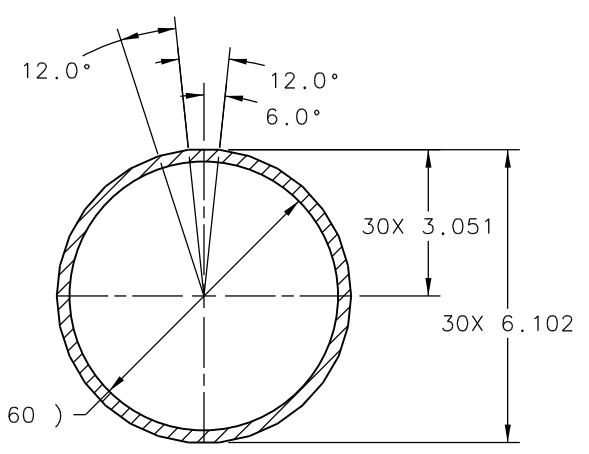
REVISION HISTORY				
ZONE	REV	DESCRIPTION	DATE	APPROVED



SECTION B-B

NOTES:

- SUGGESTED SOURCES OR JLAB APPROVED ALTERNATE:
GENERAL PLASTICS MANUFACTURING CO.
(800) 806-6051
www.generalplastics.com
- SHEETS OF ITEM 1 MAY BE GLUE TOGETHER USING ITEM 2 TO ACCOMMODATE THICKNESS PRIOR TO MACHINING.



SECTION A-A

QTY REQD	ITEM NO.	PART OR IDENTIFYING NO.	NOMENCLATURE OR DESCRIPTION	MATERIAL SPECIFICATION	NOTES
1	1	GENERAL PLASTICS #	LAST-A-FOAM	*	1 & 2

DOCUMENT CONTROL STAMP	DIM & TOL PER ASME Y14.5 UNLESS OTHERWISE SPECIFIED DIMENSIONS ARE IN INCHES TOLERANCES ARE: FRACTIONS DECIMAL ANGLES ± N/A .X ± .1 ± .50° .XX ± .01 .XXX ± .005	TRACKING NO. N/A	United States Department of Energy
MATERIAL SEE PARTS LIST	THIRD ANGLE PROJECTION	APPROVALS DRAWN C L HUTTON CHECKED	Jefferson Lab Thomas Jefferson National Accelerator Facility Newport News Virginia
FINISH MACHINED SURFACES DEBURR & BREAK ALL SHARP EDGES	125 UNLESS OTHERWISE NOTED	DATE 14JAN13	HALL D - GLUEX DETECTOR START COUNTER INNER FOAM CONE
DO NOT SCALE DRAWING		APPROVED	SIZE DWG. NO. D D00000-01-01-2001
		APPROVED	SCALE 1/2 USED ON ASSY NO. D00000-01-01-1001 SHEET 1 OF 1

IMMINARLY